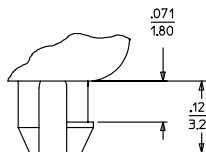
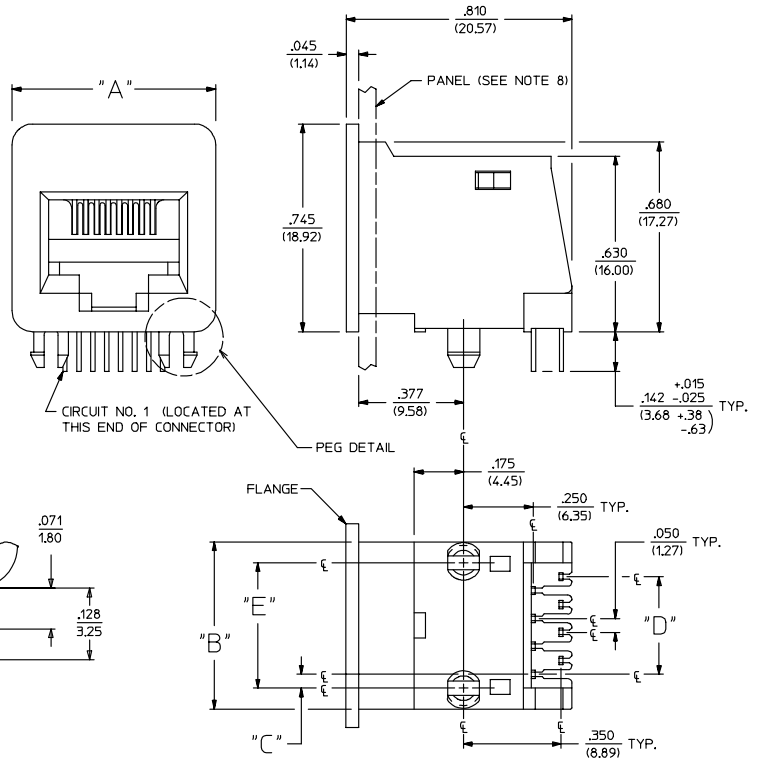


NOTES:

- 1) MATERIALS:
HOUSING: GLASS FILLED POLYESTER, UL94 V-0, COLOR: BLACK
TERMINALS: PHOSPHOR BRONZE
- 2) FINISH:
TERMINALS:
SELECT GOLD IN CONTACT AREA: 50 MICROINCHES MIN.
*SELECT TIN IN PC TAIL AREA: 100 MICROINCHES MIN.
WITH OVERALL NICKEL UNDERPLATE: 50 MICROINCHES MIN.
*THE PRIMARY SHIPPING CARTON WILL BE LABELED "COMPLIANT TO RoHS DIRECTIVE 2002/95/EC AND ELV ANNEX II OF DIRECTIVE 2000/53/EC".
CARTONS WITHOUT THIS LABEL MAY CONTAIN PRODUCT WITH TIN-LEAD IN THE PC TAIL AREA.
- 3) ALL JACKS MUST MEET THE REQUIREMENTS OF MOLEX SPECIFICATION #PS-41314.
- 4) PACKAGING OPTIONS: TRAYS OR FILM/AMMO PACK.
- 5) JACKS CONFORM TO AND ACCEPT PLUGS WHICH CONFORM TO FCC REGULATIONS, PART 68.5.
- 6) JACKS ARE TO BE USED WITH .062(1.57) THICK PRINTED CIRCUIT BOARDS.
- 7) SEE SHEET 3 FOR RECOMMENDED PANEL CUT-OUT AND BOARD LAYOUT DIMENSIONS.
- 8) PANEL TO BE LOCATED AGAINST MODULAR JACK FLANGE AS INDICATED.
- 9) ALL UNTOLERANCED DIMENSIONS ARE SHOWN FOR REFERENCE ONLY.



PEG DETAIL
SCALE: 8:1

SIZE 8 MODULAR JACK HOUSING LOADED WITH 8 TERMINALS IS SHOWN ABOVE

3	T
2	T
1	T
SH	REV

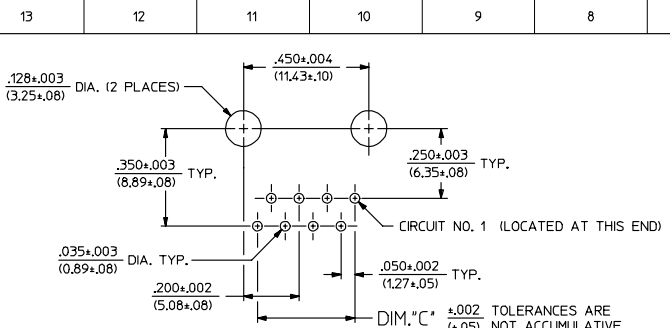
8	2	.730 (18.54)	.600 (15.24)	.200 (5.08)	.050 (1.27)	.450 (11.43)
8	4	.730 (18.54)	.600 (15.24)	.150 (3.81)	.150 (3.81)	.450 (11.43)
8	6	.730 (18.54)	.600 (15.24)	.100 (2.54)	.250 (6.35)	.450 (11.43)
8	8	.730 (18.54)	.600 (15.24)	.050 (1.27)	.350 (8.89)	.450 (11.43)
6	2	.650 (16.51)	.520 (13.21)	.175 (4.45)	.050 (1.27)	.400 (10.16)
6	4	.650 (16.51)	.520 (13.21)	.125 (3.18)	.150 (3.81)	.400 (10.16)
6	6	.650 (16.51)	.520 (13.21)	.075 (1.91)	.250 (6.35)	.400 (10.16)
4	2	.570 (14.48)	.440 (11.18)	.125 (3.18)	.050 (1.27)	.300 (7.62)
4	4	.570 (14.48)	.440 (11.18)	.075 (1.91)	.150 (3.81)	.300 (7.62)
HOUSING SIZE	CIRCUIT SIZE	DIM. "A"	DIM. "B"	DIM. "C"	DIM. "D"	DIM. "E"

LEAD FREE PLATING EC NO. UCP2004-1931 DRAWN: SCHMIDT 2004/02/23 CHKD: SCHMIDT 2004/02/23 APPR: F SMITH 2004/02/26	QUALITY SYMBOLS	GENERAL TOLERANCES (UNLESS SPECIFIED)	SCALE 4:1	DESIGN UNITS INCH	THIRD ANGLE PROJECTION	REVISE ON CAD ONLY
	0.0 0.0	4 PLACES ± .005 3 PLACES ± .005 2 PLACES ± .005 1 PLACE ± .005	DIMENSION STYLE IN/MM	DRAWN BY	DATE 1990/05/02	RIGHT ANGLE FLANGE MOUNT MODULAR JACK ASSEMBLY MOLEX INCORPORATED
		ANGULAR ±1/2°	DRAFT WHERE APPLICABLE	CHECKED BY	DATE 1990/05/02	
		MUST REMAIN WITHIN DIMENSIONS	APPROVED BY RAS	DATE 1990/05/02	MATERIAL NO. SEE SHEET 2	
THIS DRAWING CONTAINS INFORMATION THAT IS PROPRIETARY TO MOLEX INCORPORATED AND SHOULD NOT BE USED WITHOUT WRITTEN PERMISSION	SHEET NO. 1 OF 3					

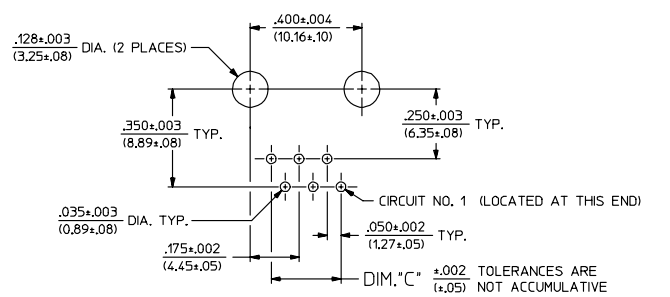
	13	12	11	10	9	8	7	6	5	4	3	2	41314
	ENGINEERING PART NUMBER	E.D.P. NUMBER	HOUSING SIZE	CIRCUIT SIZE	PACKAGING OPTION								
J	A-41314-44AAAA	015-43-6044	4	4	AMMO PACK								
	A-41314-44ABAA	015-43-6544	4	4	TRAY PACK								
	A-41314-42AAAA	015-43-6042	4	2	AMMO PACK								
	A-41314-42ABAA	015-43-6542	4	2	TRAY PACK								
	A-41314-66AAAA	015-43-6066	6	6	AMMO PACK								
	A-41314-66ABAA	015-43-6566	6	6	TRAY PACK								
I	A-41314-64AAAA	015-43-6064	6	4	AMMO PACK								
	A-41314-64ABAA	015-43-6564	6	4	TRAY PACK								
	A-41314-62AAAA	015-43-6063	6	2	AMMO PACK								
	A-41314-62ABAA	015-43-6563	6	2	TRAY PACK								
	A-41314-88AAAA	015-43-6088	8	8	AMMO PACK								
	A-41314-88ABAA	015-43-6588	8	8	TRAY PACK								
	A-41314-86ABAA	015-43-6586	8	6	TRAY PACK								
H	A-41314-84ABAA	015-43-6584	8	4	TRAY PACK								
	A-41314-82ABAA	015-43-6590	8	2	TRAY PACK								
SEE SHEET 1 FOR PART DESCRIPTIONS													
G													
F													
E													
D													
C													
B													
A													
	tb_frame_C_P_ME_T Rev. C 2002/05/05	12	11	10	9	8	7	6	5	4	3	2	1

SEE SHEET ONE EC NO. UCP2004-1331 DRAWN:LSCHMDT 2004/02/23 CHKD:LSCHMDT 2004/02/23 APPR:FSMITH 2004/02/26	QUALITY SYMBOLS	GENERAL TOLERANCES (UNLESS SPECIFIED)	SCALE ---	DESIGN UNITS INCH	THIRD ANGLE PROJECTION	REVISE ON CAD ONLY														
	0 0	<table border="1"> <tr> <td></td> <td>mm</td> <td>INCH</td> </tr> <tr> <td>4 PLACES</td> <td>±---</td> <td>±---</td> </tr> <tr> <td>3 PLACES</td> <td>±---</td> <td>±---</td> </tr> <tr> <td>2 PLACES</td> <td>±---</td> <td>±---</td> </tr> <tr> <td>1 PLACE</td> <td>±---</td> <td>±---</td> </tr> </table>		mm	INCH	4 PLACES	±---	±---	3 PLACES	±---	±---	2 PLACES	±---	±---	1 PLACE	±---	±---	DIMENSION STYLE IN/MM DRAWN BY DATE 1990/05/02 GLT CHECKED BY DATE 1990/05/02 BAP		TITLE RIGHT ANGLE FLANGE MOUNT MODULAR JACK ASSEMBLY
		mm	INCH																	
	4 PLACES	±---	±---																	
3 PLACES	±---	±---																		
2 PLACES	±---	±---																		
1 PLACE	±---	±---																		
DRAFT WHERE APPLICABLE MUST REMAIN WITHIN DIMENSIONS	APPROVED BY DATE 1990/05/02 RAS	MATERIAL NO. SEE CHART DOCUMENT NO. SDA-41314-***** SHEET NO. 2 OF 3																		

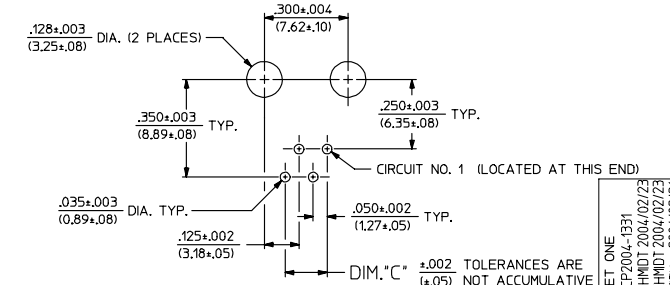
THIS DRAWING CONTAINS INFORMATION THAT IS PROPRIETARY TO MOLEX INCORPORATED AND SHOULD NOT BE USED WITHOUT WRITTEN PERMISSION



PC BOARD LAYOUT FOR HOUSING SIZE 8



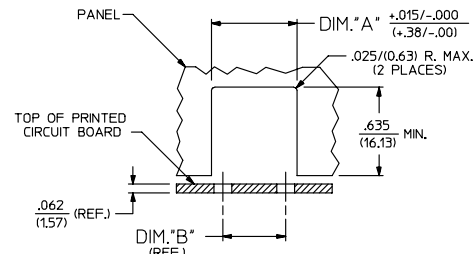
PC BOARD LAYOUT FOR HOUSING SIZE 6



PC BOARD LAYOUT FOR HOUSING SIZE 4

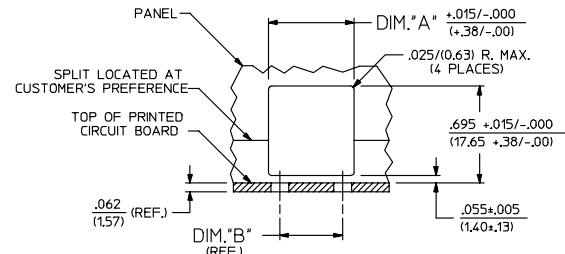
ENGINEERING PART NUMBER	HOUSING SIZE	CIRCUIT SIZE	DIM. "A"	DIM. "B"	DIM. "C"
A-41314-44** ** *	4	4	.455/(11.56)	.300/(7.62)	.150/(3.81)
A-41314-42** ** *	4	2	.455/(11.56)	.300/(7.62)	.050/(1.27)
A-41314-66** ** *	6	6	.535/(13.59)	.400/(10.16)	.250/(6.35)
A-41314-64** ** *	6	4	.535/(13.59)	.400/(10.16)	.150/(3.81)
A-41314-62** ** *	6	2	.535/(13.59)	.400/(10.16)	.050/(1.27)
A-41314-88** ** *	8	8	.615/(15.62)	.450/(11.43)	.350/(8.89)
A-41314-86** ** *	8	6	.615/(15.62)	.450/(11.43)	.250/(6.35)
A-41314-84** ** *	8	4	.615/(15.62)	.450/(11.43)	.150/(3.81)
A-41314-82** ** *	8	2	.615/(15.62)	.450/(11.43)	.050/(1.27)

NOTE: ALL RECOMMENDED BOARD LAYOUTS ARE SHOWN AS COMPONENT SIDE OF BOARD



PANEL CUT-OUT GUIDELINES (OPTION 1)

DIM. 'A' MUST BE SYMMETRICAL TO DIM. 'B' WITHIN .005/(0.13)



PANEL CUT-OUT GUIDELINES (OPTION 2)

DIM. 'A' MUST BE SYMMETRICAL TO DIM. 'B' WITHIN .005/(0.13)

SEE SHEET ONE
 EC NO. UCP2004-1331
 DRAWN: SCHMIDT 2004/02/23
 CHKD: SCHMIDT 2004/02/23
 APPR: F. SMITH 2004/02/28

QUALITY SYMBOLS	GENERAL TOLERANCES (UNLESS SPECIFIED)		SCALE	DESIGN UNITS	THIRD ANGLE PROJECTION	REVISIONS
	mm	INCH				
4 PLACES ±	---	---	---	INCH	THIRD ANGLE PROJECTION	REVISIONS
3 PLACES ±	---	---				
2 PLACES ±	---	---				
1 PLACE ±	---	---				
ANGULAR	±1/2°					

DRAFT WHERE APPLICABLE
 MUST REMAIN WITHIN DIMENSIONS

DRAWN BY	DATE	CHECKED BY	DATE
GLT	1990/05/02	BAP	1990/05/02
APPROVED BY	DATE	MATERIAL NO.	DOCUMENT NO.
RAS	1990/05/02	SEE SHEET 2	SDA-41314-*****

TITLE: PANEL/BOARD LAYOUTS FOR RIGHT ANGLE FLANGE MOUNT MODULAR JACK ASSEMBLIES
 MOLEX INCORPORATED
 SHEET NO. 3 OF 3