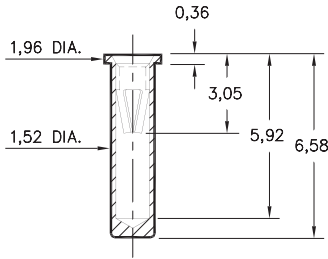


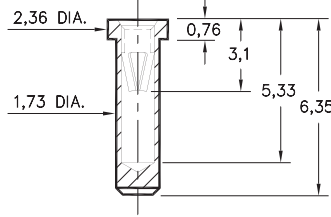
0295



0295-0-15-XX-06-XX-10-0

Solder mount in 1,60 min. mounting hole
Also available on 24mm wide carrier
tape: 1,000 parts per 330mm reel.
Order as: 0295-0-57-XX-06-XX-10-0

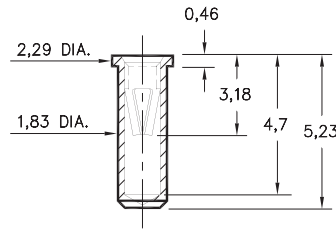
0292



0292-0-15-XX-06-XX-10-0

Solder mount in 1,8 min.
mounting hole

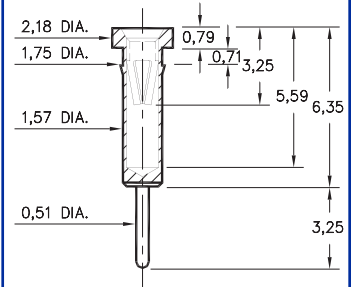
0294



0294-0-15-XX-06-XX-10-0

Solder mount in 1,93 min.
mounting hole

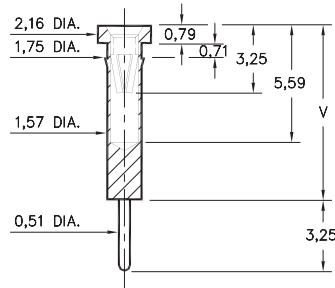
0398



0398-0-15-XX-06-XX-04-0

Press-fit in 1,68 mounting hole

0397

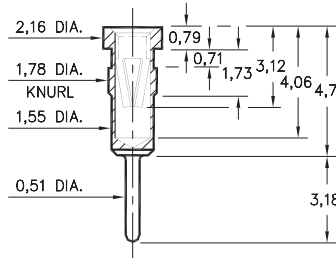


0397-X-15-XX-06-XX-04-0

Press-fit in 1,68 mounting hole

Basic Part Number	Length V
0397-0	8,97
0397-1	8,46
0397-2	10,49

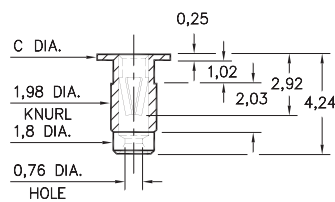
0297



0297-0-15-XX-06-XX-04-0

Press-fit in 1,7 mounting hole

9019/9039



90X9-X-19-XX-06-XX-10-0

Press-fit in 1,91 mounting hole

Basic Part Number	Head Dia. C
9019-0	3,18
9039-0	2,54

SPECIFICATIONS

SHELL MATERIAL:
Brass Alloy 360, 1/2 Hard

CONTACT MATERIAL:
Beryllium Copper Alloy 172, HT

DIMENSION IN INCHES
TOLERANCES ON:
LENGTHS: ±0,13
DIAMETERS: ±0,05
ANGLES: ± 2°

ORDER CODE: XXXX - X - 1X - XX - 06 - XX - XX - 0

BASIC PART #

SPECIFY SHELL FINISH:

- 01 5,08 m TIN/LEAD OVER NICKEL
- ◇ 80 5,08 m TIN OVER NICKEL (RoHS)
- ◇ 15 0,25 m GOLD OVER NICKEL (RoHS)

SPECIFY CONTACT FINISH:

- 01 5,08 m TIN/LEAD OVER NICKEL
- ◇ 80 5,08 m TIN OVER NICKEL (RoHS)
- ◇ 27 0,76 m GOLD OVER NICKEL (RoHS)



CONTACT

#06 CONTACT (DATA ON PAGE 221)