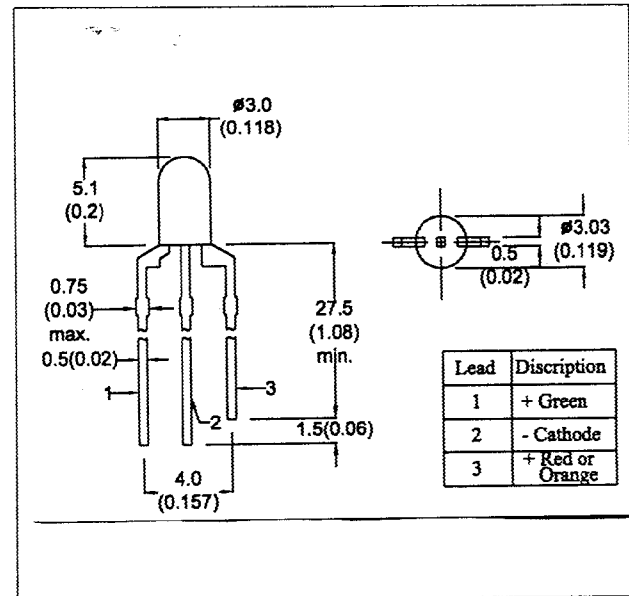


DESCRIPTION

A high efficiency red and green lamp made of GaAsP, GaP LED offering a changing color characteristics dependent on the direction the lamp is biased. These two light emitting diodes are mounted in 3mm flangeless dual color, white diffused lens.



- All dimension in mm(inch)
- No Scale
- Tol. : +/-0.3mm

ABSOLUTE MAXIMUM RATINGS

Power Dissipation @ $T_a=25^\circ\text{C}$
 Forward Current, DC (IF)
 Reverse Voltage
 Operating & Storage Temperature Range
 Lead Soldering Temperature (1/16" from body)

Green
 100mW
 30mA
 5V
 -55 to +100°C
 260°C for 5 sec.

ELECTRO-OPTICAL CHARACTERISTICS (Ta=25°C)

PARAMETER	SYMBOL	HI-EFF RED	GREEN	UNIT	CONDITIONS
Forward Voltage	MAX VF	3.0	3.0	V	IF=20mA
Reverse Breakdown Voltage	MIN BVR	5	5	V	IR=100μA
Luminous Intensity	MIN IV	4.5	6.5	mcd	IF=20mA
	TYP	8.5	12	mcd	IF=20mA
Peak Wavelength	TYP λp	650	570	nm	IF=20mA
Spectral Line Half Width	TYP Δλ	35	30	nm	IF=20mA
Viewing Angle	TYP 2θ 1/2	70	70	nm	IF=20mA



MICRO ELECTRONICS LTD.
 38, Hung To Road, Microtron Building, Kwun Tong, Kowloon, Hong Kong.
 Kwun Tong P.O. Box 69477 Hong Kong. Fax No. 2341 0321 Telex:43510 Micro Hx. Tel: 2343 0181-5

Rev A