



Micro Commercial Components

Micro Commercial Components
 20736 Marilla Street Chatsworth
 CA 91311
 Phone: (818) 701-4933
 Fax: (818) 701-4939

1N4001-BC02 THRU 1N4007-BC02

Features

- Low Current Leakage
- Metalurgically Bonded Construction
- Low Cost

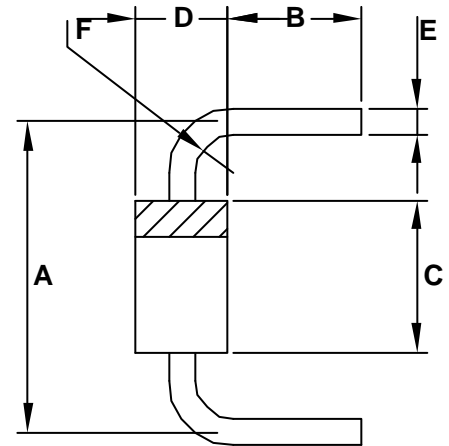
Maximum Ratings

- Operating Temperature: -50°C to +125°C
- Storage Temperature: -50°C to +150°C
- Maximum Thermal Resistance; 20°C/W Junction To Lead

MCC Catalog Number	Device Marking	Maximum Recurrent Peak Reverse Voltage	Maximum RMS Voltage	Maximum DC Blocking Voltage
1N4001-BC02	---	50V	35V	50V
1N4002-BC02	---	100V	70V	100V
1N4003-BC02	---	200V	140V	200V
1N4004-BC02	---	400V	280V	400V
1N4005-BC02	---	600V	420V	600V
1N4006-BC02	---	800V	560V	800V
1N4007-BC02	---	1000V	700V	1000V

1 Amp Rectifier 50 to 1000 Volts

DO-41 (Lead Cut Bend)



Electrical Characteristics @ 25°C Unless Otherwise Specified

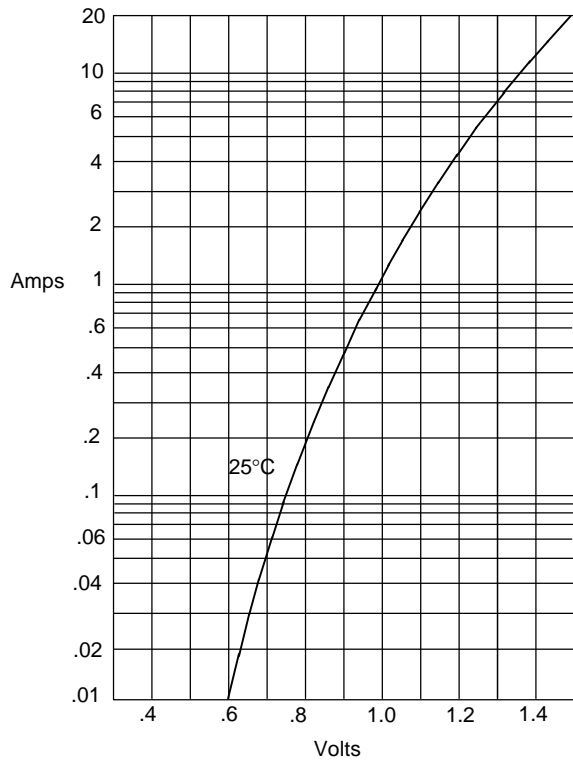
Average Forward Current	$I_{F(AV)}$	1.0A	$T_A = 75^\circ\text{C}$
Peak Forward Surge Current	I_{FSM}	30A	8.3ms, half sine
Maximum Instantaneous Forward Voltage	V_F	1.1V	$I_{FM} = 1.0\text{A}; T_J = 25^\circ\text{C}^*$
Maximum DC Reverse Current At Rated DC Blocking Voltage	I_R	5.0 μA 50 μA	$T_J = 25^\circ\text{C}$ $T_J = 125^\circ\text{C}$
Typical Junction Capacitance	C_J	15pF	Measured at 1.0MHz, $V_R=4.0\text{V}$

*Pulse test: Pulse width 300 μsec , Duty cycle 2%

DIM	DIMENSIONS				NOTE
	INCHES		MM		
A	.480	.50	12.2	12.7	
B	.170	.190	4.30	4.82	
C	.166	.205	4.10	5.20	
D	.080	.107	2.00	2.70	
E	.028	.034	.70	.90	
F	.020	.040	0.50	1.01	

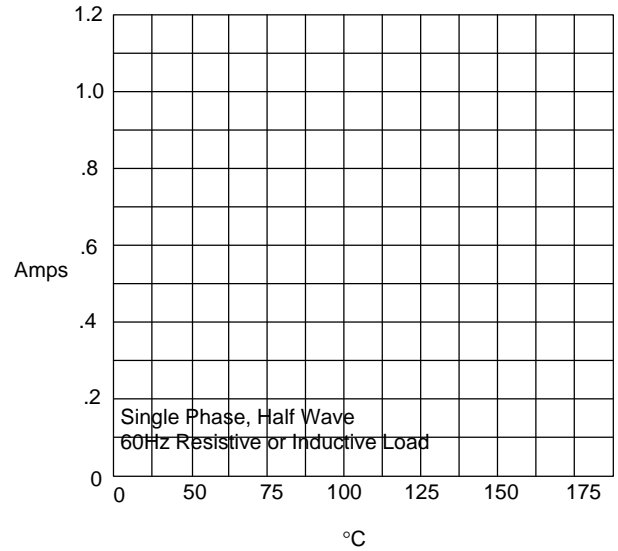
1N4001-BC02 thru 1N4007-BC02

Figure 1
Typical Forward Characteristics



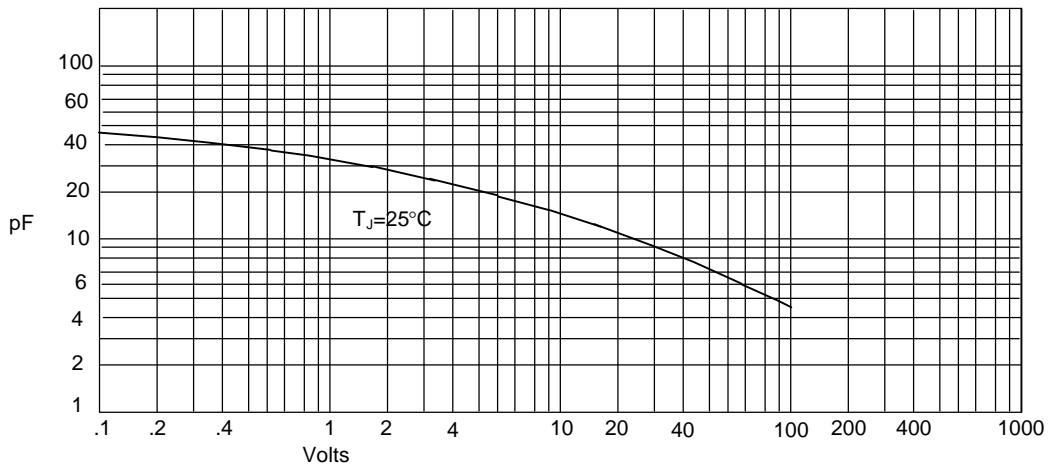
Instantaneous Forward Current - Amperes versus
Instantaneous Forward Voltage - Volts

Figure 2
Forward Derating Curve



Average Forward Rectified Current - Amperes versus
Ambient Temperature - °C

Figure 3
Junction Capacitance



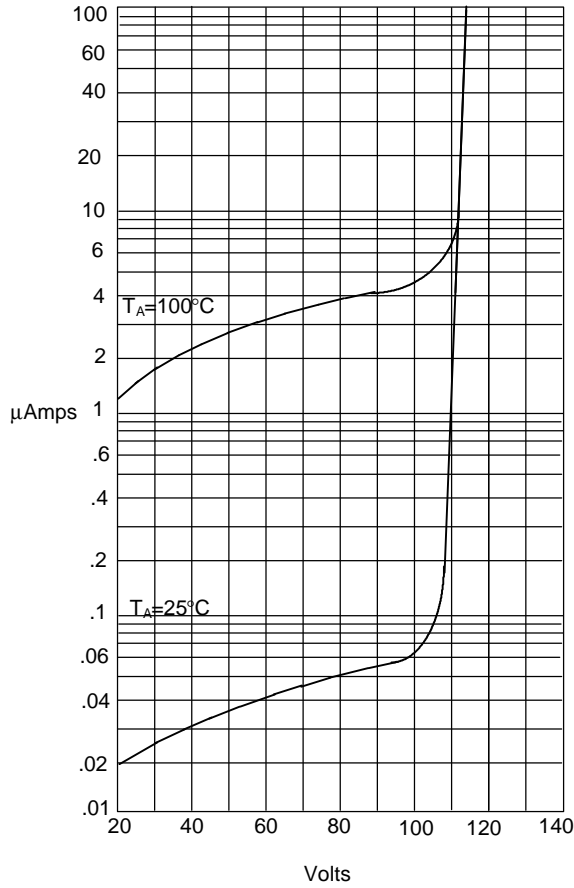
Junction Capacitance - pF versus
Reverse Voltage - Volts

1N4001-BC02 thru 1N4007-BC02



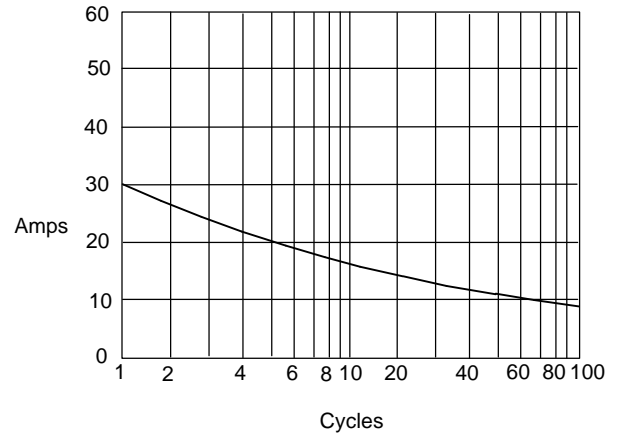
Micro Commercial Components

Figure 4
Typical Reverse Characteristics



Instantaneous Reverse Leakage Current - MicroAmperes versus
Percent Of Rated Peak Reverse Voltage - Volts

Figure 5
Peak Forward Surge Current



Peak Forward Surge Current - Amperes versus
Number Of Cycles At 60Hz - Cycles