



■ Features :

- Universal AC input / Full range
- Built-in active PFC function, PF>0.94
- Protections: Short circuit / Overload / Over voltage / Over temperature
- Cooling by free air convection
- Output voltage programmable from 20~110% by 1~5.5VDC external control signal
- Built-in remote ON-OFF control
- Fixed switching frequency at 100KHz
- 3 years warranty

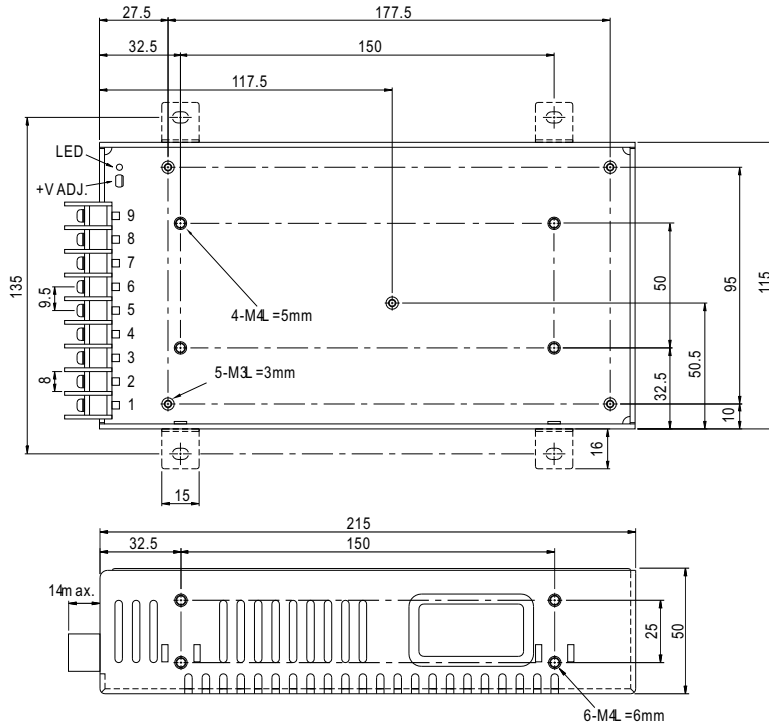


SPECIFICATION

MODEL	SPV-150-12	SPV-150-24	SPV-150-48	
OUTPUT	DCVOLTAGE	12V	24V	48V
	RATEDCURRENT	12.5A	6.25A	3.125A
	CURRENTRANGE	0~1.25A	0~0.25A	0~0.125A
	RATEDPOWER	150W	150W	150W
	RIPPLE&NOISE(max.) Note.2	150mVp-p	150mVp-p	240mVp-p
	VOLTAGEADJRANGE	10.8~13.2V	20~26.4V	41~52.8V
	VOLTAGE TOLERANCE Note.3	±1.0%	±1.0%	±1.0%
	LINEREGULATION	±0.3%	±0.2%	±0.2%
	LOADREGULATION	±0.5%	±0.5%	±0.5%
SETUPRISETIME	800ms/50ms/230VAC 500ms/50ms/115VACat full load			
HOLDUP TIME (Typ.)	16ms/230VAC 6ms/115VACat full load			
INPUT	VOLTAGERANGE Note.5	88~264VAC 24~70VDC		
	FREQUENCYRANGE	47~63Hz		
	POWERFACTOR (Typ.)	PF>0.94/230VAC PF>0.98/115VACat full load		
	EFFICIENCY (Typ.)	82%	83%	83%
	ACCURRENT (Typ.)	2.5A/115VAC 0.25A/230VAC		
	INRUSHCURRENT (Typ.)	20A/115VAC 2.0A/230VAC		
LEAKAGECURRENT	<1mA @ 40VAC			
PROTECTION	OVERLOAD	105~150% rated output power Protection type: constant current limiting, recovery automatic, after fault condition removed		
	OVERVOLTAGE	13.8~16.2V	27.6~32.4V	57.6~72V
	OVERTEMPERATURE	80°C ±5°C (TSW) (with heat sink power transistor) Protection type: shutdown, voltage recovery automatic, after temperature cooled down		
FUNCTION	REMOTECONTROL	4~1.0VDC open/closed 0.8VDC open/closed		
	OUTPUTVOLTAGERIM	2.4~3.2V	4.8~6.4V	9.6~2.8V
ENVIRONMENT	WORKINGTEMP.	-20~65°C (Refer to Derating Curve)		
	WORKINGHUMIDITY	20~90%RH non-condensing		
	STORAGEEMP.HUMIDITY	-40~85°C (0~95%RH)		
	TEMPCOEFFICIENT	±0.03%/°C (0~50°C)		
SAFETY EMC (Note4)	VIBRATION	10~500Hz 2G 0min./1cycle @ 0min. each long X, Y, Z axes		
	SAFETY STANDARDS	UL60950-1, TUVEN60950-1 approved		
	WITHSTANDVOLTAGE	I/P-O/P:3KVAC /P-FG:1.5KVAC /P-FG:0.5KVAC		
	ISOLATIONRESISTANCE	I/P-O/P/J/P-FG,O/P-FG:100MΩms @ 00VDC @ 5~70%RH		
	EMC MISSION	Compliance: EN55022 CISPR22 Class B, EN61000-3-2,-3		
OTHERS	EMC IMMUNITY	Compliance: EN61000-4-2,3,4,5,6,8,11 EN55024 High Industrial level criteria A		
	MTBF	207khr min. MIL-HDBK-217F (25°C)		
	DIMENSION	215*115*50mm(L*W*H)		
PACKING	1.1Kg/12pcs/14Kg/0.92CUFT			
NOTE	<p>1. All parameters NOT specially mentioned are measured at 230VAC input, rated load and 25°C of ambient temperature.</p> <p>2. Ripple & noise are measured at 20MHz of bandwidth by using a 12" twisted pair-wire terminated with a 0.1uF & 47uF parallel capacitor.</p> <p>3. Tolerance : includes set up tolerance, line regulation and load regulation.</p> <p>4. The power supply is considered a component which will be installed into a final equipment. The final equipment must be re-confirmed that it still meets EMC directives. For guidance on how to perform these EMC tests, please refer to "EMI testing of component power supplies." (as available on http://www.meanwell.com)</p> <p>5. Derating may be needed under low input voltages. Please check the derating curve for more details.</p>			

Mechanical Specification

Case No. 912L Unit: mm

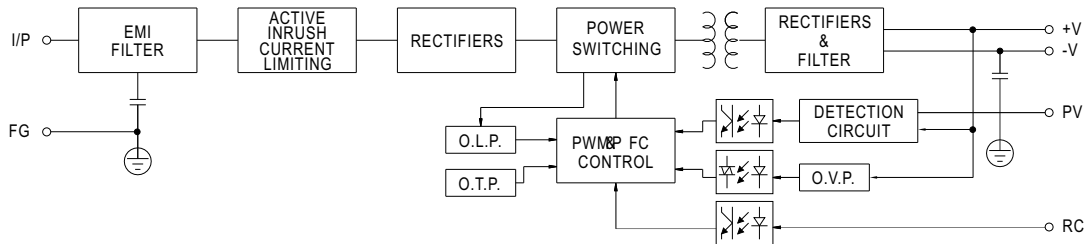


Terminal Pin No. Assignment

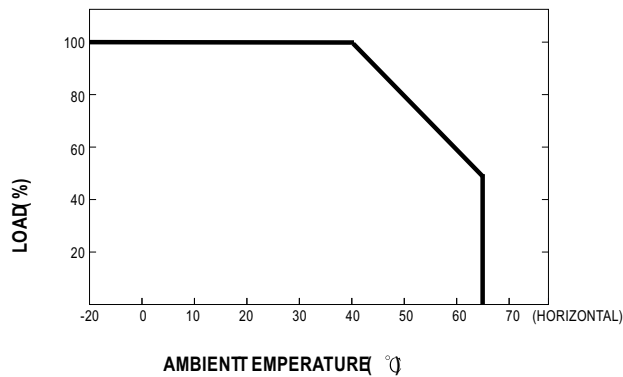
Pin No.	Assignment	Pin No.	Assignment
1	AC/L	5	PV
2	AC/N	6-7	DC OUTPUT -V
3	FG	8-9	DC OUTPUT +V
4	RC		

Block Diagram

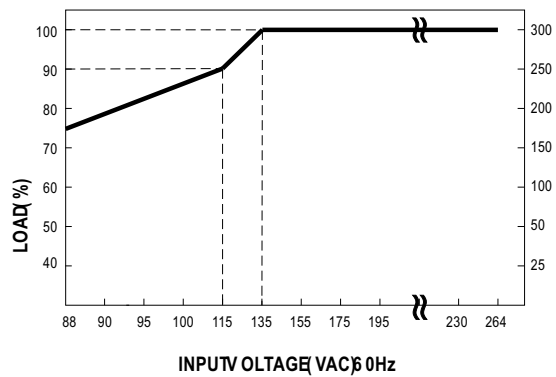
fosc: 100KHz



Derating Curve



Static Characteristics



■ **Function Manual**

1. External Voltage Control

