



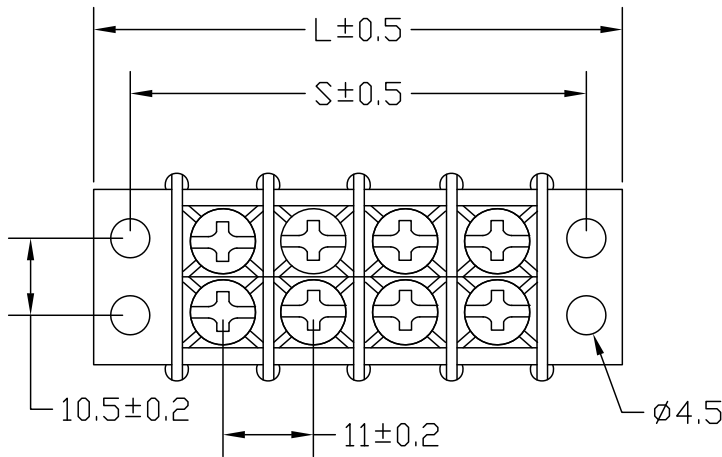
ALL RIGHTS RESERVED. NO PORTION OF THIS PUBLICATION, WHETHER IN WHOLE OR IN PART, CAN BE REPRODUCED WITHOUT THE EXPRESS WRITTEN CONSENT OF SPC TECHNOLOGY.

SPC-F005.DWG

REVISIONS

DOC. NO. SPC-F005 * Effective: 7/8/02 * DCP No: 1398

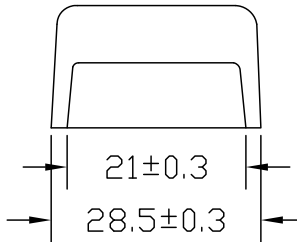
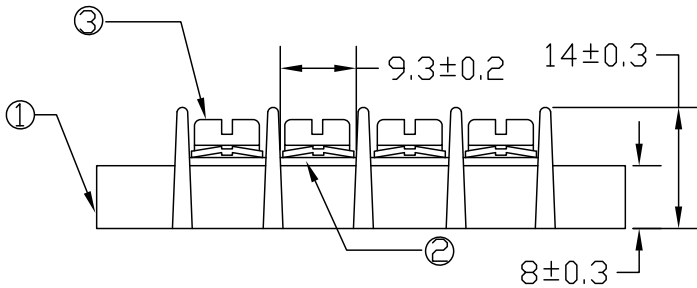
DCP #	REV	DESCRIPTION	DRAWN	DATE	CHECKD	DATE	APPRVD	DATE
2000	A	Released	JN	01/14/09	JWM	01/14/09	JWM	01/14/09



Description:

- Current Rating: 20Amp AC300V
- Insulation withstands Volt: AC200V min.
- Insulation resistance: >2000MΩ DC500V
- Operating temperature: -40°C to +105°C
- Pitch: 11.00mm

Item	Material	Plating/Finish
1	Insulating Body, PC	Black
2	Terminal, Brass	Tin Plated
3	Screw, Steel	Ni Plated



Mfg. P/N	Number of Poles	L (mm)	S (mm)
MC24335	2	41.2	32.4
MC24336	3	52.3	43.5
MC24337	4	63.4	54.6
MC24338	5	74.5	65.7
MC24339	6	85.6	76.8
MC24340	8	107.8	99
MC24341	10	130	121.2

DISCLAIMER:
ALL STATEMENTS AND TECHNICAL INFORMATION CONTAINED HEREIN ARE BASED UPON INFORMATION AND/OR TESTS WE BELIEVE TO BE ACCURATE AND RELIABLE. SINCE CONDITIONS OF USE ARE BEYOND OUR CONTROL, THE USER SHALL DETERMINE THE SUITABILITY OF THE PRODUCT FOR THE INTENDED USE AND ASSUME ALL RISK AND LIABILITY WHATSOEVER IN CONNECTION THEREWITH.

TOLERANCES:
UNLESS OTHERWISE SPECIFIED, DIMENSIONS ARE FOR REFERENCE PURPOSES ONLY.

DRAWN BY:	DATE:
Jason Nash	01/14/09
CHECKED BY:	DATE:
JWM	01/14/09
APPROVED BY:	DATE:
JWM	01/14/09

DRAWING TITLE:			
TERMINAL BLOCK			
SIZE	DWG. NO.	ELECTRONIC FILE	REV
A	Ta-1151	Ta-1151.DWG	A
SCALE: NTS	U.O.M.: INCHES [mm]	SHEET: 1 OF 1	