

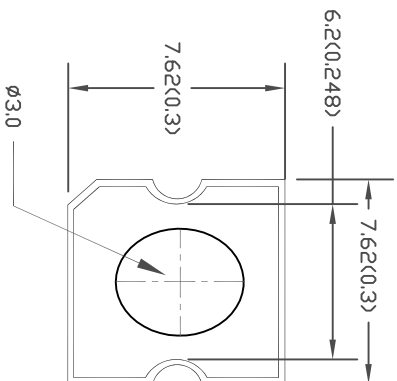
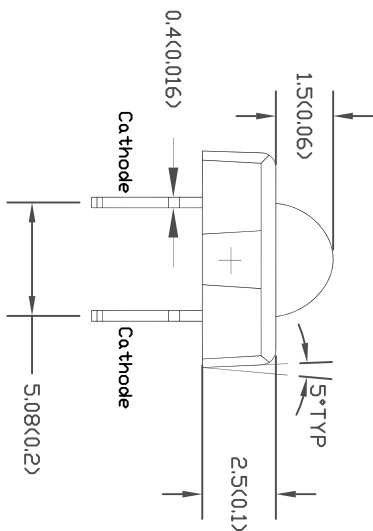
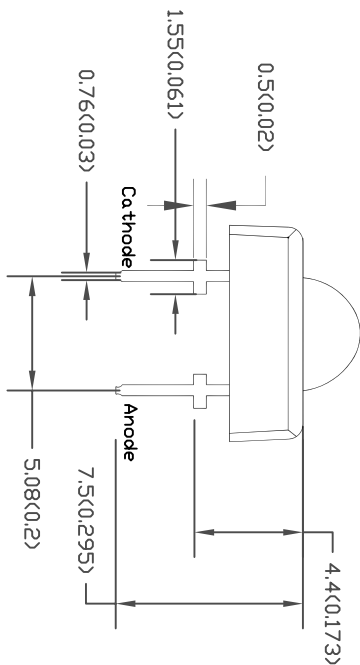


SPC
TECHNOLOGY

ALL RIGHTS RESERVED. NO PORTION OF THIS PUBLICATION, WHETHER IN WHOLE OR IN PART CAN BE REPRODUCED WITHOUT THE EXPRESS WRITTEN CONSENT OF SPC TECHNOLOGY.
SPC-F005.DWG

REVISONS		DCI. NO.	SPC-F005	*	Effective	7/8/02	*	DCP No	1398
DCP #	REV	DESCRIPTION	DATE	CHECKD	DATE	APPRVI	DATE		
XX	XX	XXXX	11-09-08	XXXX	11-09-08	XXXX	11-09-08		
XXXX	XXXX		11-09-08	XXXX	11-09-08	XXXX	11-09-08		

Package Dimension:



- Notes:
- All dimensions are in millimeters (inches).
 - Tolerance is ±0.25mm (0.010") unless otherwise noted.
 - Protruded resin under flange is 10µm (0.4") max.
 - Lead spacing is measured where the leads emerge from the package.
 - Specifications are subject to change without notice.
 - This data-sheet only valid for six months.



Part No	Chip Material	Lens Color	Source Color
ETG-PTSS90-70	AlGalnP	Water Clear	Super Bright Yellow



RoHS
Compliant

DISCLAIMER:
ALL STATEMENTS AND TECHNICAL INFORMATION CONTAINED HEREIN ARE BASED UPON INFORMATION AND/OR TESTS WE BELIEVE TO BE ACCURATE AND RELIABLE. SINCE CONDITIONS OF USE ARE BEYOND OUR CONTROL, THE USER SHALL DETERMINE THE SUITABILITY OF THE PRODUCT FOR THE INTENDED USE AND ASSUME ALL RISK AND LIABILITY WHATSOEVER IN CONNECTION THEREWITH.

TOLERANCES:

UNLESS OTHERWISE SPECIFIED, DIMENSIONS ARE FOR REFERENCE PURPOSES ONLY.

DRAWN BY:	DATE:
XXXX	11-09-08
CHECKED BY:	DATE:
XXXX	11-09-08
APPROVED BY:	DATE:
XXXX	11-09-08

DRAWING TITLE:

LED - Multicolor

SIZE	DWG. NO.	ELECTRONIC FILE	REV
A	MC24168	02P5892	XX
SCALE:	NTS	U.D.M.: INCHES [mm]	SHEET: 1 OF 1



SPC
TECHNOLOGY

ALL RIGHTS RESERVED. NO PORTION OF THIS PUBLICATION, WHETHER IN WHOLE OR IN PART CAN BE REPRODUCED WITHOUT THE EXPRESS WRITTEN CONSENT OF SPC TECHNOLOGY.

SPC-F005.DWG

REVISIONS		DOC. NO. SPC-F005	* Effective: 7/8/02	* DCP No: 1398
DCP #	REV	DESCRIPTION	DATE	DATE
XX	XX	XXXX	23-09-08	XXXX
XXXX	XXXX		23-09-08	XXXX

Absolute Maximum Ratings

(Ta=25°C)

Parameter	Max.	Unit
Power Dissipation	100	mW
Peak Forward Current (1/10 Duty Cycle, 0.1ms Pulse Width)	100	mA
Continuous Forward Current	50	mA
Derating Linear From 50°C	0.4	mA/°C
Reverse Voltage	5	V
Operating Temperature Range	-40°C to +80°C	
Storage Temperature Range	-40°C to +80°C	
Lead Soldering Temperature [4mm,15/7° From Body]	260°C for 5 Seconds	

Electro-optical Characteristics

(Ta=25°C)

Parameter	Symbol	Min.	Typ.	Max.	Unit	Test Condition
Luminous Flux	Lm	1.25	1.65	---	lm	If=50mA (Note 1)
Viewing Angle	2θ _{1/2}	60	70	80	Deg	(Note 2)
Peak Emission Wavelength	λ _p	585	590	595	nm	If=20mA
Dominant Wavelength	λ _d	585	590	595	nm	If=20mA (Note 3)
Spectral Line Half-Width	Δλ	15	20	25	nm	If=20mA
Forward Voltage	V _f	1.8	2.25	2.8	V	If=20mA
Reverse Current	I _r	---	---	100	μA	V _r =5V

Notes:

- Luminous intensity is measured with a light sensor and filter combination that approximates the CIE eye-response curve.
- θ_{1/2} is the off-axis angle at which the luminous intensity is half the axial luminous intensity
- The dominant wavelength (λ_d) is derived from the CIE Chromaticity diagram and represents the single wavelength which defines the color of the device.



RoHS
Compliant

DISCLAIMER:

ALL STATEMENTS AND TECHNICAL INFORMATION CONTAINED HEREIN ARE BASED UPON INFORMATION AND/OR TESTS WE BELIEVE TO BE ACCURATE AND RELIABLE. SINCE CONDITIONS OF USE ARE BEYOND OUR CONTROL, THE USER SHALL DETERMINE THE SUITABILITY OF THE PRODUCT FOR THE INTENDED USE AND ASSUME ALL RISK AND LIABILITY WHATSOEVER IN CONNECTION THEREWITH.

TOLERANCES:

UNLESS OTHERWISE SPECIFIED, DIMENSIONS ARE FOR REFERENCE PURPOSES ONLY.

DRAWN BY:	DATE:
XXXX	23-09-08
CHECKED BY:	DATE:
XXXX	23-09-08
APPROVED BY:	DATE:
XXXX	23-09-08

DRAWING TITLE:

Multi Color LED

SIZE	DWG. NO.	ELECTRONIC FILE	REV
A	MC24168	02P5892	XX
SCALE:	NTS	U.O.M.: INCHES [mm]	SHEET: 1 OF 1



SPC
TECHNOLOGY

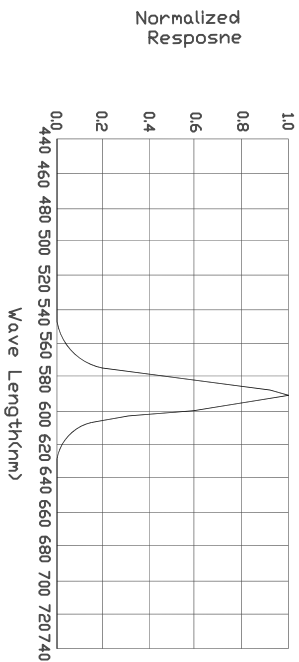
ALL RIGHTS RESERVED. NO PORTION OF THIS PUBLICATION,
WHETHER IN WHOLE OR IN PART CAN BE REPRODUCED
WITHOUT THE EXPRESS WRITTEN CONSENT OF SPC
TECHNOLOGY.

SPC-F005.DWG

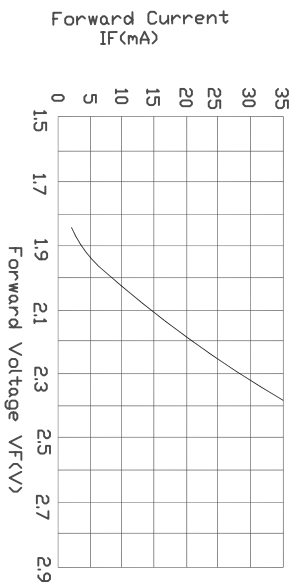
REVISONS		DOC. NO. SPC-F005	* Effective: 7/8/02	* DCP No: 1398				
DCP #	REV	DESCRIPTION	DRAWN	DATE	CHECKD	DATE	APPRD	DATE
XX	XX	XXXX	XXXX	22-09-08	XXXX	22-09-08	XXXX	22-09-08
XXXX	XXXX		XXXX	22-09-08	XXXX	22-09-08	XXXX	22-09-08

Typical Electrical / Optical Characteristics Curves (25°C Ambient Temperature Unless Otherwise Noted)

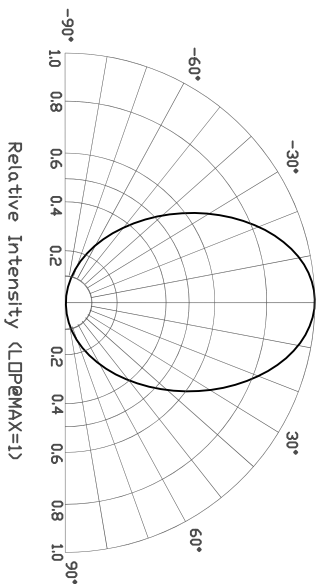
Spectral Radiance (Peak @ 590nm)



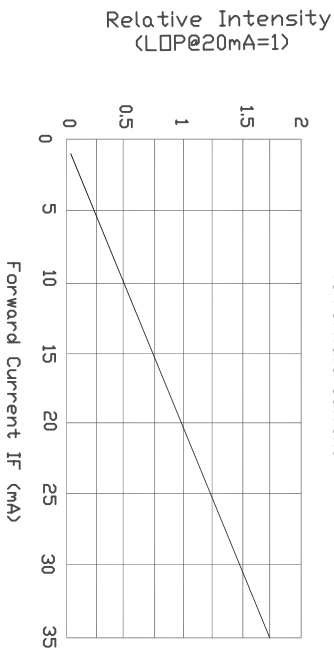
Forward Current vs Forward Voltage



Beam Pattern



Relative Luminous Intensity vs Forward Current



DISCLAIMER:
ALL STATEMENTS AND TECHNICAL INFORMATION CONTAINED
HEREIN ARE BASED UPON INFORMATION AND/OR TESTS WE
BELIEVE TO BE ACCURATE AND RELIABLE. SINCE
CONDITIONS OF USE ARE BEYOND OUR CONTROL, THE
USER SHALL DETERMINE THE SUITABILITY OF THE PRODUCT
FOR THE INTENDED USE AND ASSUME ALL RISK AND
LIABILITY WHATSOEVER IN CONNECTION THEREWITH.

TOLERANCES:

UNLESS OTHERWISE
SPECIFIED,
DIMENSIONS ARE
FOR REFERENCE
PURPOSES ONLY.

DRAWN BY:	XXXX	DATE:	22-09-08
CHECKED BY:	XXXX	DATE:	22-09-08
APPROVED BY:	XXXX	DATE:	22-09-08

DRAWING TITLE:

Multi Color LED

SIZE	DWG. NO.	ELECTRONIC FILE	REV
A	MC24168	02P5892	XX
SCALE:	NTS	U.O.M.: INCHES [mm]	SHEET: 1 OF 1