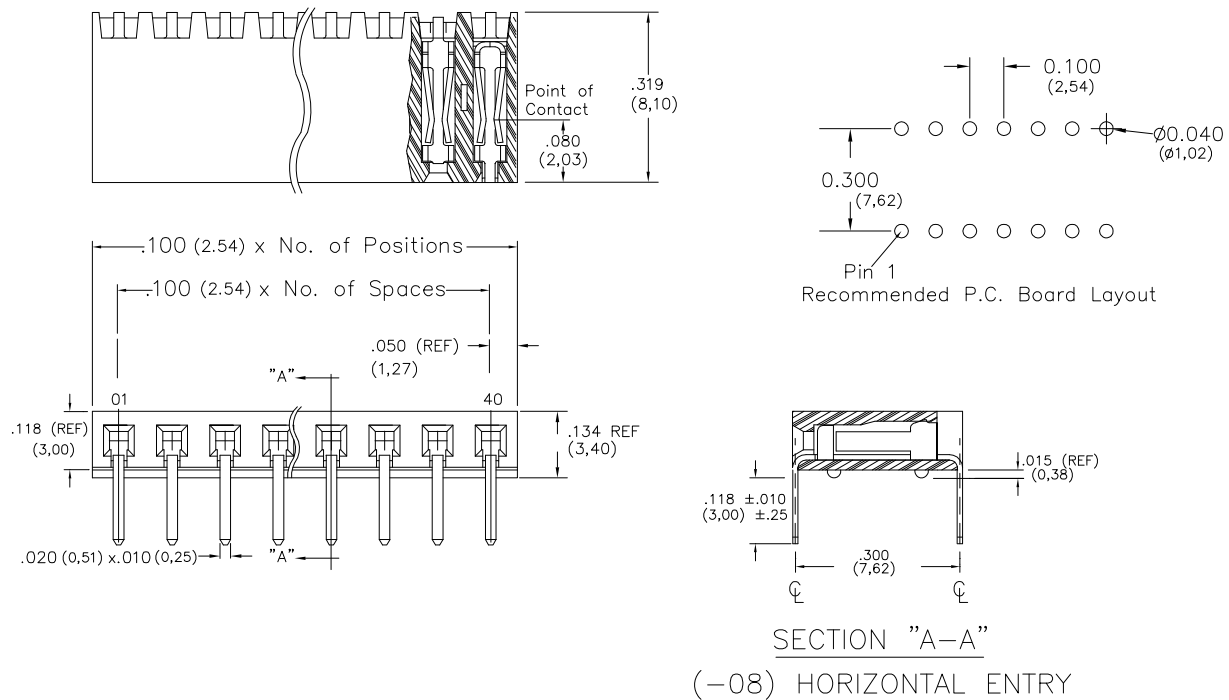
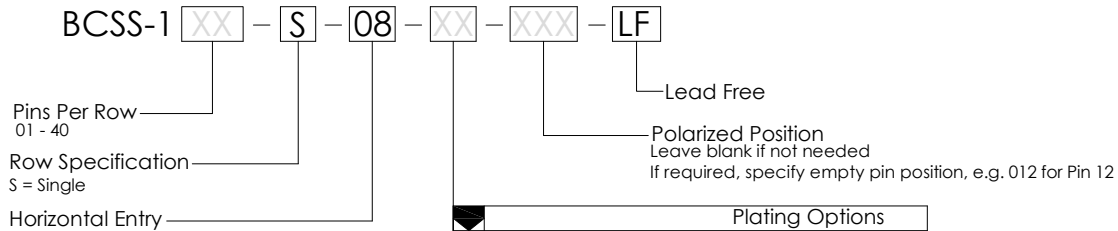


Major League Electronics .100 cl Box Connector Socket Strip - Horizontal



Tails may be clipped to achieve desired pin length

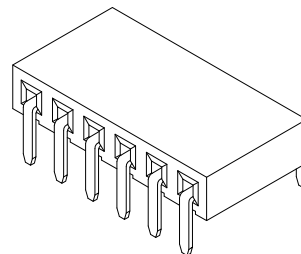
Ordering Information



Plating Options	
H	- 30µ Gold on Contact Area / Matte Tin on Tail
T	- Matte Tin All Over
GT	- 10µ Gold on Contact Area / Matte Tin on Tail
F	- Gold Flash over Entire Pin
G	- 10µ Gold on Contact area / Flash on Tail

Specifications

Insertion Depth: .145 (3,68) to .250 (6,35)
 Insertion Force - Per Contact - H Plating:
 5oz. (1,39N) avg with .025 (0,64mm) sq. pin
 Withdrawal Force - Per Contact - H Plating:
 3oz. (0,83N) avg with .025 (0,64mm) sq. pin
 Current Rating: 3.0 Ampere
 Insulation Resistance: 5000MΩ Min.
 Dielectric Withstanding: 500V AC
 Contact Resistance: 20 mΩ Max.
 Operating Temperature: -40°C to + 105°C
 Max. Process Temperature:
 Peak: 260°C up to 20 secs.
 Process: 230°C up to 60 secs.
 Wave: 260°C up to 6 secs.
 Manual Solder: 350°C up to 5 secs.



Mates with:

BSTC, TSHCR,
 BSTCM, TSHCRE,
 BSTCR, TSHCRSM,
 BSTCRSM, TSHR,
 BSTS, TSHRE,
 LBSTCM, TSHS,
 LTSHCR, TSHSCM,
 LTSHCRE, TSHSM,
 LTSHR, ULTSHSM,
 LTSHRE, ULTSHC,
 LTSHSM, ULTSHCR,
 TSHC,

Materials

Contact Material: Phosphor Bronze
 Insulator Material: Nylon 6T
 Plating: Au or Sn over 50µ" (1,27) Ni

Products cut to specific sizes are uncancellable/nonreturnable

Parts are subject to change without notice

BCSS-1-SH SERIES

.100 cl Single Row
 Box Connector Socket Strip - Horizontal

12 JAN 07

Scale
 NTS

UNLESS OTHERWISE SPECIFIED
 DIMENSIONS IN INCHES (MM)
 TOLERANCES ARE:

ONE PLACE DECIMALS ±.100
 TWO PLACE DECIMALS ±.010
 THREE PLACE DECIMALS ±.005
 FOUR PLACE DECIMALS ±.0020
 ANGLES
 ±5°



4235 Earnings Way, New Albany, Indiana, 47150, USA
 1-800-782-3486 (USA/Canada/Mexico)
 Tel: 812-944-7244
 Fax: 812-944-7268
 E-mail: mle@mlelectronics.com
 Web: www.mlelectronics.com


Edition
 B

Sheet
 1/2

Revisions

Revision B - (26th Jan 2010)

Pin dimension changed from 0.028 x 0.010 to 0.020 x 0.010

<small>UNLESS OTHERWISE SPECIFIED DIMENSIONS IN INCHES (MM) TOLERANCES ARE: ONE PLACE DECIMALS ±.100 TWO PLACE DECIMALS ±.010 THREE PLACE DECIMALS ±.005 FOUR PLACE DECIMALS ±.0020 ANGLES ±5°</small>	<p style="text-align: center;">BCSS-1-SH SERIES</p> 	<p style="text-align: center;">.100 cl Single Row Box Connector Socket Strip - Horizontal</p>	<p style="text-align: center;">12 JAN 07</p>	<p>Scale NTS</p> <hr/> <p>Revision B</p> <hr/> <p>Sheet 2/2</p>
		<p style="text-align: center;">4235 Earnings Way, New Albany, Indiana, 47150, USA 1-800-782-3486 (USA/Canada/Mexico) Tel: 812-944-7244 Fax: 812-944-7268 E-mail: mle@mlelectronics.com Web: www.mlelectronics.com</p>		

