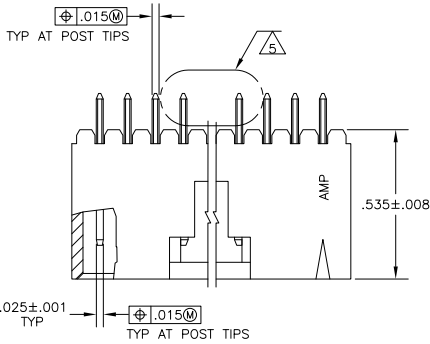
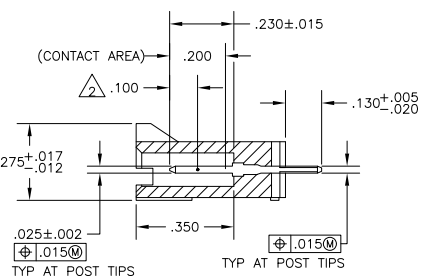
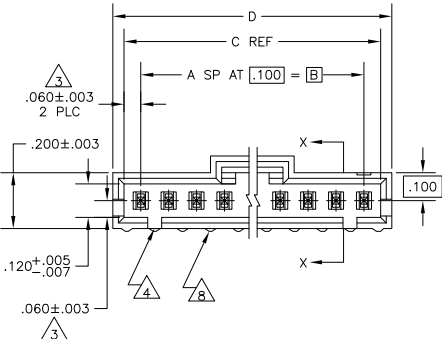


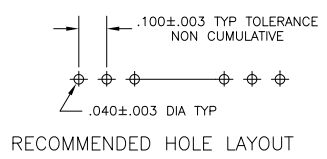
THIS DRAWING IS UNPUBLISHED. RELEASED FOR PUBLICATION. ALL RIGHTS RESERVED.



- $\triangle 1$  .000030 GOLD IN THE CONTACT AREA, .000100-.000200 MATTE TIN-LEAD ON THE SOLDER TAIL, ALL OVER .000050 NICKEL
- $\triangle 2$  POINT OF MEASUREMENT FOR PLATING THICKNESS
- $\triangle 3$  THESE DIMENSIONS APPLY WHERE THE POST INTERSECTS THE HOUSING
- $\triangle 4$  ON ASSEMBLIES WITH FOUR OR MORE POSITIONS, TWO POLARIZATION SLOTS. ON ASSEMBLIES WITH TWO OR THREE POSITIONS, ONE POLARIZATION SLOT.
- $\triangle 5$  SELECT POST TAILS FORMED TO PROVIDE CONNECTOR HOLD DOWN UNTIL SOLDERED. CONFIGURATION ACCEPTS .027-.080 THICK PRINTED CIRCUIT BOARD. (SEE DETAIL Z)
- $\triangle 6$  .000030 GOLD IN THE CONTACT AREA, .000100-.000200 MATTE TIN ON THE SOLDER TAIL, ALL OVER .000050 NICKEL
- $\triangle 7$  HIGH TEMPERATURE CONFIGURATION
- $\triangle 8$  STANDOFFS NOT PRESENT ON UNDERSIDE OF ASSEMBLY
- $\triangle 9$  OBSOLETE PARTS: OBSOLETE CIS STREAMLINING PER D.RENAUD/D.SINISI



SECTION X-X



DETAIL Z  
POST DETAIL TYP  
2 POST MINIMUM

LOC		DIBT		REVISIONS				DATE	BY	APP'D
AD	00	P	LTR	DESCRIPTION	REVISED PER	ECO	NO	MM	MM	
		P3			REVISED PER	ECO-12-008133		30APR12	HMR	MM

$\triangle 9$	$\triangle 7$	R	$\triangle 6$	2.600	2.520	2.400	24	25	7-103908-4
$\triangle 9$	$\triangle 7$	R	$\triangle 6$	2.500	2.420	2.300	23	24	7-103908-3
$\triangle 9$	$\triangle 7$	R	$\triangle 6$	2.400	2.320	2.200	22	23	7-103908-2
$\triangle 9$	$\triangle 7$	R	$\triangle 6$	2.300	2.220	2.100	21	22	7-103908-1
$\triangle 9$	$\triangle 7$	R	$\triangle 6$	2.200	2.120	2.000	20	21	7-103908-0
$\triangle 9$	$\triangle 7$	R	$\triangle 6$	2.100	2.020	1.900	19	20	6-103908-9
$\triangle 9$	$\triangle 7$	R	$\triangle 6$	2.000	1.920	1.800	18	19	6-103908-8
$\triangle 9$	$\triangle 7$	R	$\triangle 6$	1.900	1.820	1.700	17	18	6-103908-7
$\triangle 9$	$\triangle 7$	R	$\triangle 6$	1.800	1.720	1.600	16	17	6-103908-6
$\triangle 9$	$\triangle 7$	R	$\triangle 6$	1.700	1.620	1.500	15	16	6-103908-5
$\triangle 9$	$\triangle 7$	R	$\triangle 6$	1.600	1.520	1.400	14	15	6-103908-4
$\triangle 9$	$\triangle 7$	R	$\triangle 6$	1.500	1.420	1.300	13	14	6-103908-3
$\triangle 9$	$\triangle 7$	R	$\triangle 6$	1.400	1.320	1.200	12	13	6-103908-2
$\triangle 9$	$\triangle 7$	R	$\triangle 6$	1.300	1.220	1.100	11	12	6-103908-1
$\triangle 9$	$\triangle 7$	R	$\triangle 6$	1.200	1.120	1.000	10	11	6-103908-0
$\triangle 9$	$\triangle 7$	R	$\triangle 6$	1.100	1.020	.900	9	10	5-103908-9
$\triangle 9$	$\triangle 7$	R	$\triangle 6$	1.000	.920	.800	8	9	5-103908-8
$\triangle 9$	$\triangle 7$	R	$\triangle 6$	.900	.820	.700	7	8	5-103908-7
$\triangle 9$	$\triangle 7$	R	$\triangle 6$	.800	.720	.600	6	7	5-103908-6
$\triangle 9$	$\triangle 7$	R	$\triangle 6$	.700	.620	.500	5	6	5-103908-5
$\triangle 9$	$\triangle 7$	R	$\triangle 6$	.600	.520	.400	4	5	5-103908-4
$\triangle 9$	$\triangle 7$	R	$\triangle 6$	.500	.420	.300	3	4	5-103908-3
$\triangle 9$	$\triangle 7$	R	$\triangle 6$	.400	.320	.200	2	3	5-103908-2
$\triangle 9$	$\triangle 7$	R	$\triangle 6$	.300	.220	.100	1	2	5-103908-1
$\triangle 9$	$\triangle 1$	$\triangle 1$	$\triangle 1$	2.600	2.520	2.400	24	25	2-103908-4
$\triangle 9$	$\triangle 1$	$\triangle 1$	$\triangle 1$	2.500	2.420	2.300	23	24	2-103908-3
$\triangle 9$	$\triangle 1$	$\triangle 1$	$\triangle 1$	2.400	2.320	2.200	22	23	2-103908-2
$\triangle 9$	$\triangle 1$	$\triangle 1$	$\triangle 1$	2.300	2.220	2.100	21	22	2-103908-1
$\triangle 9$	$\triangle 1$	$\triangle 1$	$\triangle 1$	2.200	2.120	2.000	20	21	2-103908-0
$\triangle 9$	$\triangle 1$	$\triangle 1$	$\triangle 1$	2.100	2.020	1.900	19	20	1-103908-9
$\triangle 9$	$\triangle 1$	$\triangle 1$	$\triangle 1$	2.000	1.920	1.800	18	19	1-103908-8
$\triangle 9$	$\triangle 1$	$\triangle 1$	$\triangle 1$	1.900	1.820	1.700	17	18	1-103908-7
$\triangle 9$	$\triangle 1$	$\triangle 1$	$\triangle 1$	1.800	1.720	1.600	16	17	1-103908-6
$\triangle 9$	$\triangle 1$	$\triangle 1$	$\triangle 1$	1.700	1.620	1.500	15	16	1-103908-5
$\triangle 9$	$\triangle 1$	$\triangle 1$	$\triangle 1$	1.600	1.520	1.400	14	15	1-103908-4
$\triangle 9$	$\triangle 1$	$\triangle 1$	$\triangle 1$	1.500	1.420	1.300	13	14	1-103908-3
$\triangle 9$	$\triangle 1$	$\triangle 1$	$\triangle 1$	1.400	1.320	1.200	12	13	1-103908-2
$\triangle 9$	$\triangle 1$	$\triangle 1$	$\triangle 1$	1.300	1.220	1.100	11	12	1-103908-1
$\triangle 9$	$\triangle 1$	$\triangle 1$	$\triangle 1$	1.200	1.120	1.000	10	11	1-103908-0
$\triangle 9$	$\triangle 1$	$\triangle 1$	$\triangle 1$	1.100	1.020	.900	9	10	103908-9
$\triangle 9$	$\triangle 1$	$\triangle 1$	$\triangle 1$	1.000	.920	.800	8	9	103908-8
$\triangle 9$	$\triangle 1$	$\triangle 1$	$\triangle 1$	.900	.820	.700	7	8	103908-7
$\triangle 9$	$\triangle 1$	$\triangle 1$	$\triangle 1$	.800	.720	.600	6	7	103908-6
$\triangle 9$	$\triangle 1$	$\triangle 1$	$\triangle 1$	.700	.620	.500	5	6	103908-5
$\triangle 9$	$\triangle 1$	$\triangle 1$	$\triangle 1$	.600	.520	.400	4	5	103908-4
$\triangle 9$	$\triangle 1$	$\triangle 1$	$\triangle 1$	.500	.420	.300	3	4	103908-3
$\triangle 9$	$\triangle 1$	$\triangle 1$	$\triangle 1$	.400	.320	.200	2	3	103908-2
$\triangle 9$	$\triangle 1$	$\triangle 1$	$\triangle 1$	.300	.220	.100	1	2	103908-1

THIS DRAWING IS A CONTROLLED DOCUMENT. DIM: H. MOLL 7-28-86. OK: 7-28-86. PFC: deJONG 7-28-86. NAME: PFC: deJONG. PRODUCT SPEC: APPLICATION SPEC: WEIGHT: SIZE: CASE CODE: DRAWING NO: A200779C=103908. RESTRICTED TO: CUSTOMER DRAWING. SCALE: 4:1. SHEET: 1 of 1. REV: P3.

TE Connectivity  
TE  
HEADER ASSY, AMPMODU MTE, VERTICAL, SINGLE ROW, .100 CL, .025 SQ POSTS WITH LATCH & RETENTIVE POSTS