

WILMART™ Protective Relays – 20-000 Series

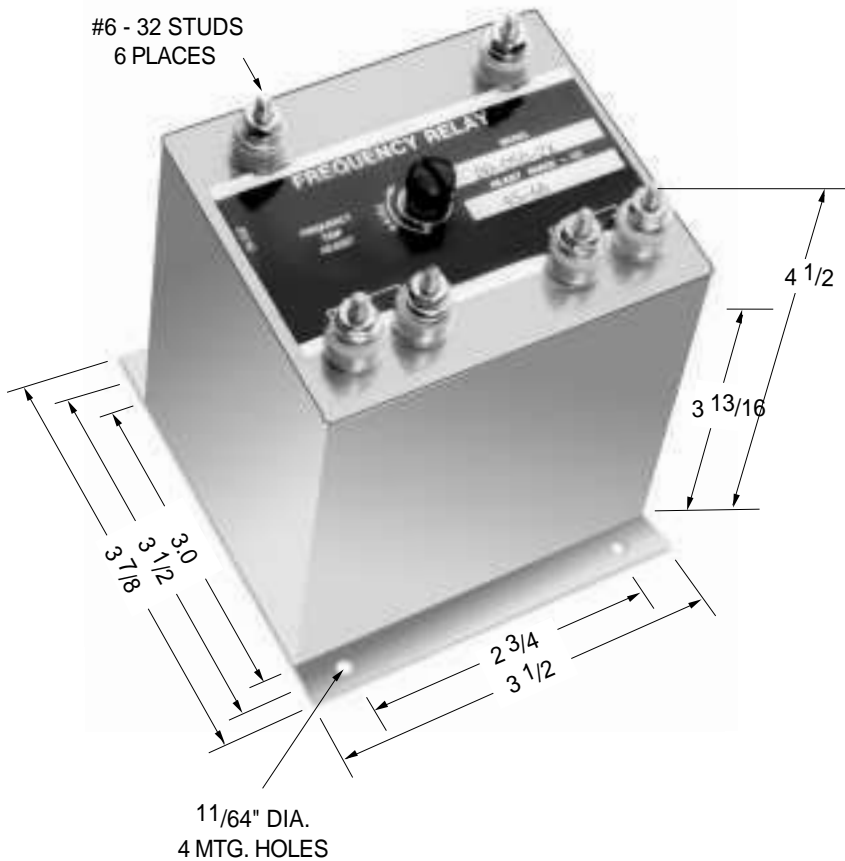


Function: 81 O

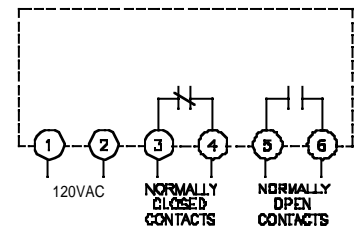
The output contacts of frequency relays are energized when the frequency exceeds the adjustable set point. Overfrequency and underfrequency relays are available in 50, 60 and 400Hz. Combination over/underfrequency “band pass” relays are also available. These are energized at rated frequency and de-energized during overfrequency or underfrequency conditions. Frequency Differential relays are energized between the preset frequencies. The pick-up and drop-out frequency settings are independently adjustable.

Operation:

The normally open contacts close, and the normally closed contacts open, at all frequencies above the set point. The contacts in the connection diagram, are shown in the de-energized position (below the trip set point).



Note: Dimensions in inches. Multiply values by 25.4 for dimensions in mm.



PRODUCT SPECIFICATIONS	
Part Number	20-000 Series
Input Voltage (±10%)	120 VAC, Single Phase
Frequencies Range (adjustable).....	See Part Number Selection
Differential	Frequency pick-up to drop-out differential is 1% max
Temperature Range	-40°C to +85°C
Temperature Drift.....	± 1% frequency error over temperature range
Voltage Error	± 1% for input voltage of 120 VAC ± 10%
Contact Ratings	5 amp resistive at 120 VAC or 28 VDC
Output Contacts	One set N.O., one set N.C.

PART NUMBER SELECTION	
Sample Part No.	20-050X
Type:	20 - Frequency
Frequency Range	040 = 40-50 Hz 050 = 50-60 Hz 060 = 60-70 Hz 350 = 350-500 Hz 400 = 400-450 Hz
Mounting Options	X = Flange blank = Stud

Notes:

1. Remove screw for access to trip adjustment.

Consult factory for additional models.