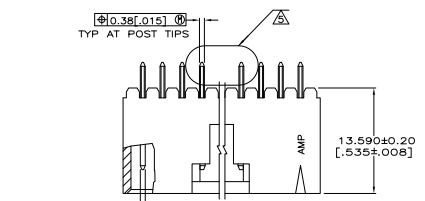
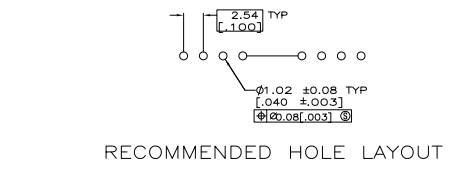
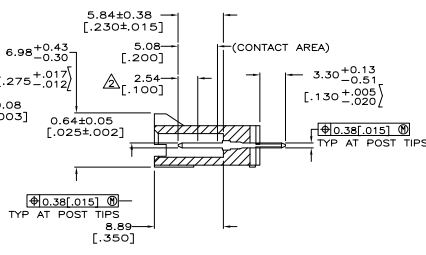
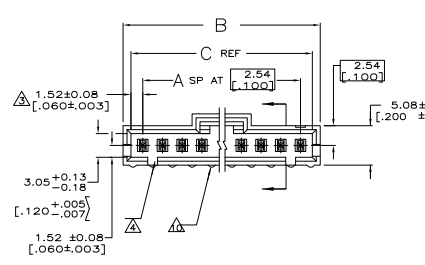


THIS DRAWING IS UNPUBLISHED  
 ALL RIGHTS RESERVED

REV	DATE	DESCRIPTION	BY	CHK	APP
AD	00				
A2		REVISED PER ECO-11-004587	11MM11	RK	HMR



DETAIL Z  
 POST DETAIL TYP  
 2 POST MINIMUM



- ▲ .000100 BRIGHT TIN-LEAD OVER .000050 NICKEL.
- ▲ POINT OF MEASUREMENT FOR PLATING THICKNESS.
- ▲ THE NOTED DIMENSIONS APPLY AT THE INTERSECTION OF THE POST AND THE HOUSING.
- ▲ ON ASSEMBLIES WITH FOUR OR MORE POSITIONS, TWO POLARIZATION SLOTS.
- ▲ ON ASSEMBLIES WITH TWO OR THREE POSITIONS, ONE POLARIZATION SLOT.
- ▲ SELECT POST TAILS FORMED TO PROVIDE CONNECTOR HOLD DOWN UNTIL SOLDERED. CONFIGURATION ACCEPTS 0.69[.027]-2.03[.080] THICK PRINTED CIRCUIT BOARD. ( SEE DETAIL Z ).
- ▲ .000100 BRIGHT TIN OVER .000050 NICKEL.
- ▲ PRELIMINARY PART - NOT RELEASED FOR PRODUCTION.
- ▲ .000100 MATTE TIN OVER .000050 NICKEL.
- ▲ HIGH TEMPERATURE CONFIGURATION.
- ▲ STANDOFFS NOT PRESENT ON UNDERSIDE OF ASSEMBLY
- ▲ OBSOLETE PARTS: OBSOLETE CIS STREAMLINING PER D.RENAUD/D.SINISI

- ▲ OBSOLETE
- ▲ OBSOLETE
- ▲ OBSOLETE
- ▲ OBSOLETE
- ▲ OBSOLETE
- ▲ OBSOLETE
- ▲ OBSOLETE
- ▲ OBSOLETE

REV	DATE	DESCRIPTION	BY	CHK	APP
8	9	3-103669-0			
2	3	2-103669-9			
5	6	2-103669-8			
4	5	2-103669-7			
3	4	2-103669-6			
1	2	2-103669-5			
24	25	2-103669-4			
23	24	2-103669-3			
22	23	2-103669-2			
21	22	2-103669-1			
20	21	2-103669-0			
19	20	1-103669-9			
18	19	1-103669-8			
17	18	1-103669-7			
16	17	1-103669-6			
15	16	1-103669-5			
14	15	1-103669-4			
13	14	1-103669-3			
12	13	1-103669-2			
11	12	1-103669-1			
10	11	1-103669-0			
9	10	103669-9			
8	9	103669-8			
7	8	103669-7			
6	7	103669-6			
5	6	103669-5			
4	5	103669-4			
3	4	103669-3			
2	3	103669-2			
1	2	103669-1			

PLATING	C	B	A	NO. OF POSN	PART NO.

THIS DRAWING IS A CONTROLLED DOCUMENT. SEE SHEET 1-11

TE Connectivity

DATE: 108-25034

SIZE: 114-25026

CUSTOMER DRAWING: A100779

DATE: 4-1

REV: 1

APP: A2

THIS DRAWING IS UNPUBLISHED  
 ALL RIGHTS RESERVED

REV	DATE	DESCRIPTION	BY	CHK	APP
AD 00		SEE SHEET 1			

OBSOLETE	△△△	△	64.01	66.04	24	25	7-103669-4
	△△△	△	[2,520]	[2,600]	23	24	7-103669-3
	△△△	△	58.93	60.96	22	23	7-103669-2
	△△△	△	[2,320]	[2,400]	21	22	7-103669-1
	△△△	△	56.39	58.42	20	21	7-103669-0
	△△△	△	[2,220]	[2,300]	19	20	6-103669-9
	△△△	△	53.85	55.88	18	19	6-103669-8
	△△△	△	[2,020]	[2,100]	17	18	6-103669-7
	△△△	△	48.77	50.80	16	17	6-103669-6
	△△△	△	[1,720]	[1,800]	15	16	6-103669-5
OBSOLETE	△△△	△	43.69	45.72	14	15	6-103669-4
	△△△	△	[1,620]	[1,700]	13	14	6-103669-3
	△△△	△	38.61	40.64	12	13	6-103669-2
	△△△	△	[1,520]	[1,600]	11	12	6-103669-1
	△△△	△	36.07	38.10	10	11	6-103669-0
	△△△	△	[1,420]	[1,500]	9	10	5-103669-9
	△△△	△	33.53	35.56	8	9	5-103669-8
	△△△	△	[1,320]	[1,400]	7	8	5-103669-7
	△△△	△	30.99	33.02	6	7	5-103669-6
	△△△	△	[1,220]	[1,300]	5	6	5-103669-5
	△△△	△	28.45	30.48	4	5	5-103669-4
	△△△	△	[1,120]	[1,200]	3	4	5-103669-3
	△△△	△	25.91	27.94	2	3	5-103669-2
	△△△	△	[1,020]	[1,100]	1	2	5-103669-1
	△△△	△	23.37	25.40			
	△△△	△	[920]	[1,000]			
	△△△	△	20.83	22.86			
	△△△	△	[820]	[900]			
	△△△	△	18.29	20.32			
	△△△	△	[720]	[800]			
	△△△	△	15.75	17.78			
	△△△	△	[620]	[700]			
	△△△	△	13.21	15.24			
	△△△	△	[520]	[600]			
	△△△	△	10.67	12.70			
	△△△	△	[420]	[500]			
	△△△	△	8.13	10.16			
	△△△	△	[320]	[400]			
	△△△	△	5.59	7.62			
	△△△	△	[220]	[300]			
REMARKS	PLATING	C	B	A	NO. OF POSN	PART NO.	

THIS DRAWING IS A CONTROLLED DOCUMENT. **TE Connectivity**

DATE: 108-25034  
 DATE: 114-25026  
 DATE: 100779

DESCRIPTION: HDR ASSY, VERT, SINGLE ROW  
 2.54 [100] C/A, 0.64 [025] SQ POST  
 WITH PL26, AMP/KOUDU MTE

SIZE: A1  
 SHEET: 2 OF 2  
 DRAWING NO: 103669