

4

3

2

1

THIS DRAWING IS UNPUBLISHED. RELEASED FOR PUBLICATION.  
 © COPYRIGHT BY TYCO ELECTRONICS CORPORATION. ALL RIGHTS RESERVED.

LOC	DIST	REVISIONS			
F	REV	DESCRIPTION	DATE	BY	APP'D
AD	00				
	B1	REVISED PER ECO-08-001445	1/18/08	SS	MS
	B2	REVISED PER ECO-10-000444	19JAN10	KK	HMR

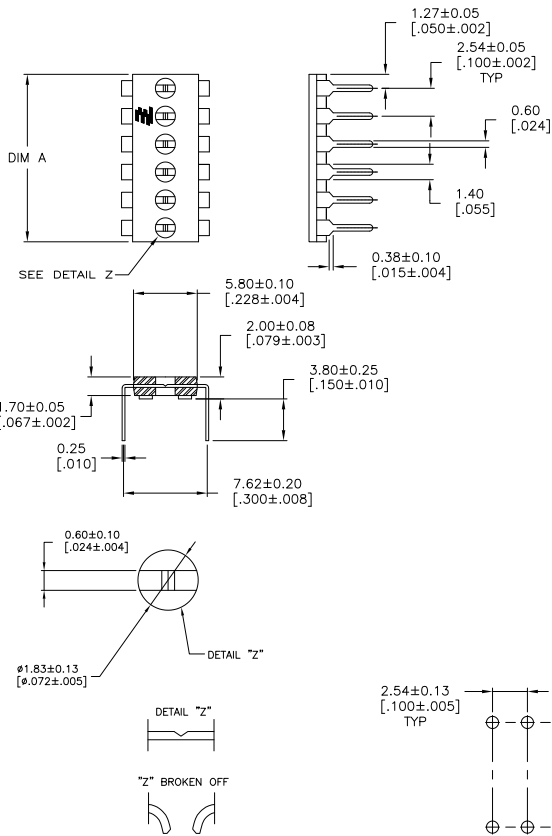
**SPECIFICATIONS:**

**MATERIAL:**

CASE: PBT 30% GLASS UL94V-0  
 TERMINAL: COPPER ALLOY, TIN OVER NICKEL PLATE

△ ALL MATERIALS AND FINISHES SHALL COMPLY WITH EU DIRECTIVE 2002/95/EC OF 27JAN2003 (ROHS)

△ OBSOLETE PARTS: OBSOLETE CIS STREAMLINING PER D.RENAUD/D.SINISI



△ OBSOLETE	30.48 [1.200]	12	1-1825190-0
	25.40 [1.000]	10	1825190-9
	22.86 [0.900]	9	1825190-8
	20.32 [0.800]	8	1825190-7
	17.78 [0.700]	7	1825190-6
△ OBSOLETE	15.24 [0.600]	6	1825190-5
	12.70 [0.500]	5	1825190-4
	10.16 [0.400]	4	1825190-3
	7.62 [0.300]	3	1825190-2
△ OBSOLETE	2.54 [0.200]	2	1825190-1

THIS DRAWING IS A CONTROLLED DOCUMENT.		DRN	DESIGNS	Tyco Electronics Corporation	
DIMENSIONS: mm [INCHES]		S.S. VISWESWARA	CHK	Harrisburg, Pa 17105-3608	
TOLERANCES UNLESS OTHERWISE SPECIFIED:		M.S. SARVER	APP'D	SHUNT, DIP, PROGRAMMABLE	
0 PLG	± .005	M.S. SARVER	NAME	-	
1 PLG	± .005		APPLICATION SPEC	-	
2 PLG	± .005		WEIGHT	-	
3 PLG	± .005		SIZE	A2 00779 C=1825190	
4 PLG	± .005		RESTRICTED TO	-	
ANGLES	± .005		CUSTOMER DRAWING	SCALE	4:1 SHEET 1 OF 1 REV B2
FINISH	-				

1825190

A