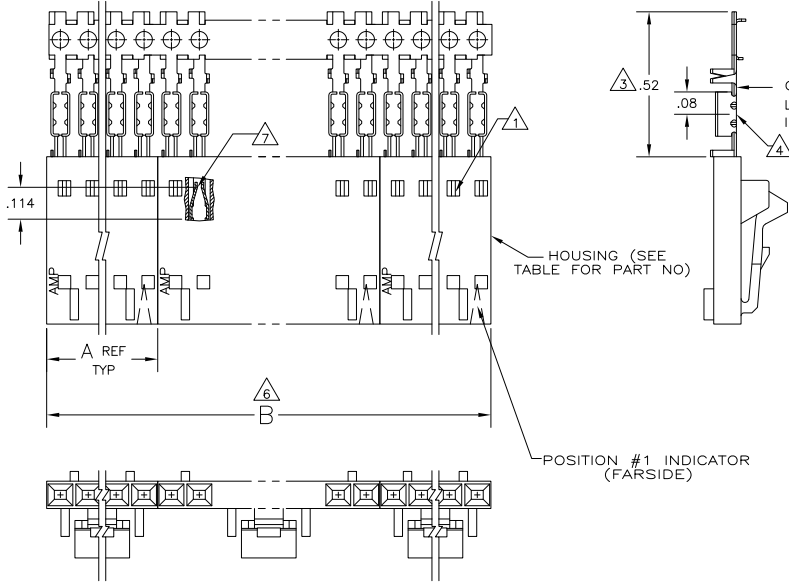
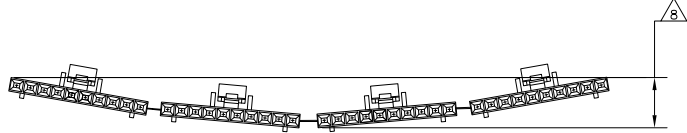


THIS DRAWING IS UNPUBLISHED. RELEASED FOR PUBLICATION
 © COPYRIGHT BY TYCO ELECTRONICS CORPORATION. ALL RIGHTS RESERVED.

LOC	DIST	REVISIONS		
P	LR	DESCRIPTION	DATE	BY
N	EC	063C 0734 04	15DEC04	BSV/JLG
N1		REVISED PER ECO-09-021826	02SEP09	KK/AEG



- 1 CONTACTS ARE LATCHED INTO THE PRELOAD WINDOWS
- 2 USE WITH #22-#26 AWG WIRE SIZE, .054/.030 INSULATION DIAMETER, .015 MAXIMUM INSULATION THICKNESS
- 3 THE DIMENSION APPLIES WITH THE FORWARD PRELOAD STOP IN CONTACT WITH THE HOUSING SURFACE
- 4 POINT OF MEASUREMENT FOR PLATING THICKNESS
- 5 FOR INDIVIDUAL ASSEMBLIES SEE PART NUMBER 103644
- 6 ASSEMBLIES ARE JOINED BY THE CARRIER STRIP. ORDER QUANTITY REFLECTS TOTAL NUMBER OF INDIVIDUAL ASSEMBLIES REQUIRED. SEE TABLE FOR NUMBER OF ASSEMBLIES PER STRIP.
- 7 POINT OF MEASUREMENT FOR PLATING THICKNESS (INSIDE BEAMS)
- 8 MAXIMUM ALLOWABLE BOW OF ASSEMBLY NOT TO EXCEED .055.
- 9 .000015 GOLD IN THE CONTACT AREA. .000050-.000100 BRIGHT TIN-LEAD ON THE TERMINATION AREA. ALL OVER .000050 NICKEL.
- 10 .000015 GOLD IN THE CONTACT AREA. .000050-.000100 BRIGHT TIN ON THE TERMINATION AREA. ALL OVER .000050 NICKEL.
- 11 PRELIMINARY PART - NOT RELEASED FOR PRODUCTION.
- 12 .000015 GOLD IN THE CONTACT AREA. .000050-.000100 MATTE TIN ON THE TERMINATION AREA. ALL OVER .000050 NICKEL.
- 13 OBSOLETE PARTS: OBSOLETE CIS STREAMLINING PER D.RENAUD/D.SINISI



EXAMPLE: STRIP ASSEMBLY
SCALE 2:1

THIS DRAWING IS A CONTROLLED DOCUMENT.		DWG: L. A. MAYER 11-4-06 OK: P. de Jong 11-12-06 APP: P. de Jong 11-12-06	Tyco Electronics Corporation Harrisburg, Pa 17105-3608
DIMENSIONS: INCHES 0 PLC ± .005 1 PLC ± .005 2 PLC ± .005 3 PLC ± .005 4 PLC ± .005 ANGLES ± .005 FINISH	ROYALPHAS UNIFORM OTHERS UNIFORM	PRODUCT SPEC: 108-25034 APPLICATION SPEC: 114-25026 WEIGHT: -	RCPT ASSY, AMPMODU MTE, SINGLE ROW, .100 C/L, LATCHED & POLARIZED FOR #22-#25 AWG WIRE SIZE, STRIP FORM SIZE: A2 QTY CODE: 00779 DRAWING NO: C=103957
MATERIAL:	HOUSING: SEE TABLE	CUSTOMER DRAWING	SCALE: 4:1 SHEET: 1 OF 2 REV: N1

AMP 1471-9 REV 31MM2000

103957

4

3

2

1

THIS DRAWING IS UNPUBLISHED. RELEASED FOR PUBLICATION
 © COPYRIGHT BY TYCO ELECTRONICS CORPORATION. ALL RIGHTS RESERVED.

LOC	DIST	REVISIONS		
P	LTR	DESCRIPTION	DATE	BY
AD	00	SEE SHEET 1		

△	2	2.40	1.198	1-104257-1	12	6-103957-1
△	2	2.20	1.098	1-104257-0	11	6-103957-0
△	2	2.00	.998	104257-9	10	5-103957-9
△	2	1.80	.898	104257-8	9	5-103957-8
△	2	1.60	.798	104257-7	8	5-103957-7
△	2	1.40	.698	104257-6	7	5-103957-6
△	4	2.39	.598	104257-5	6	5-103957-5
△	4	1.99	.498	104257-4	5	5-103957-4
△	5	1.99	.398	104257-3	4	5-103957-3
△	8	2.40	.298	104257-2	3	5-103957-2
△	10	2.00	.198	104257-1	2	5-103957-1
△	2	1.40	.698	104257-6	7	2-103957-0
△	2	2.40	1.198	1-104257-1	12	1-103957-9
△	2	2.00	.998	104257-9	10	1-103957-8
△	2	1.60	.798	104257-7	8	1-103957-7
△	4	2.39	.598	104257-5	6	1-103957-6
△	4	1.99	.498	104257-4	5	1-103957-5
△	5	1.99	.398	104257-3	4	1-103957-4
△	8	2.40	.298	104257-2	3	1-103957-3
△	10	2.00	.198	104257-1	2	1-103957-2
△	2	2.40	1.198	1-104257-1	12	1-103957-1
△	2	2.20	1.098	1-104257-0	11	1-103957-0
△	2	2.00	.998	104257-9	10	103957-9
△	2	1.80	.898	104257-8	9	103957-8
△	2	1.60	.798	104257-7	8	103957-7
△	2	1.40	.698	104257-6	7	103957-6
△	4	2.39	.598	104257-5	6	103957-5
△	4	1.99	.498	104257-4	5	103957-4
△	5	1.99	.398	104257-3	4	103957-3
△	8	2.40	.298	104257-2	3	103957-2
△	10	2.00	.198	104257-1	2	103957-1
PLATING	△	B	A	HOUSING PART NUMBER	NO OF POSN	ASSEMBLY PART NUMBER ON STRIP

THIS DRAWING IS A CONTROLLED DOCUMENT.

DESIGNER: L. A. MAYER 11-4-56	DATE: 11-4-56	Tyco Electronics Corporation Harrisburg, Pa 17105-3608
OK: P. de Jong 11-12-56	DATE: 11-12-56	
DRAWN: P. de Jong 11-12-56	DATE: 11-12-56	RCPT ASSY, AMPMODU MTE, SINGLE ROW, .100 C/L, LATCHED & POLARIZED FOR #22-#25 AWG WIRE SIZE, STRIP FORM
PRODUCT SPEC: 108-25034	APPLICATION SPEC: 114-25026	
MATERIAL: -	FINISH: SEE TABLE	SIZE: A2 QTY: 00779 C=103957
CUSTOMER DRAWING		SCALE: 1:1 SHEET 2 OF 2 REV N1