

# Customer Information Sheet

DRAWING No. M60-614XX45

SHEET 2 OF 2

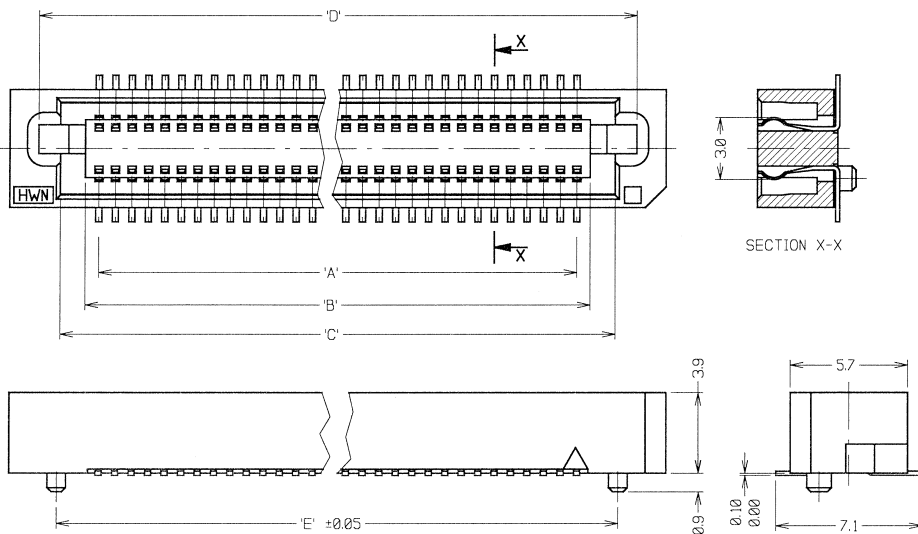
IF IN DOUBT - ASK

(C)

NOT TO SCALE

THIRD ANGLE PROJECTION

ALL DIMENSIONS IN mm



PART No.	No. OF CONTACTS	'A'	'B'	'C'	'D'	'E'	'F'
M60-6141045	10 + 10	7.2	8.5	10.9	13.0	11.2	15.8
M60-6141545	15 + 15	11.2	12.5	14.9	17.0	15.2	19.8
M60-6142045	20 + 20	15.2	16.5	18.9	21.0	19.2	23.8
M60-6142545	25 + 25	19.2	20.5	22.9	25.0	23.2	27.8
M60-6143045	30 + 30	23.2	24.5	26.9	29.0	27.2	31.8
M60-6144045	40 + 40	31.2	32.5	34.9	37.0	35.2	39.8
M60-6145045	50 + 50	39.2	40.5	42.9	45.0	43.2	47.8

**SPECIFICATIONS:**

**MATERIAL:**

MOULDING = LCP, UL94V-0

CONTACTS = PHOSPHOR BRONZE

**FINISH:**

**CONTACTS:**

0.05µ MIN GOLD OVER 1.27µ MIN NICKEL

0.5µ MIN GOLD ON CONTACT AREA.

**ELECTRICAL:**

CURRENT RATING = 0.5 AMPS

VOLTAGE RATING = 100V AC

DIELECTRIC WITHSTANDING VOLTAGE = 300V AC (1 MINUTE)

INSULATION RESISTANCE = 1000 MEGOHMS MIN (250V DC)

CONTACT RESISTANCE = 40 MILLIOHMS MAX

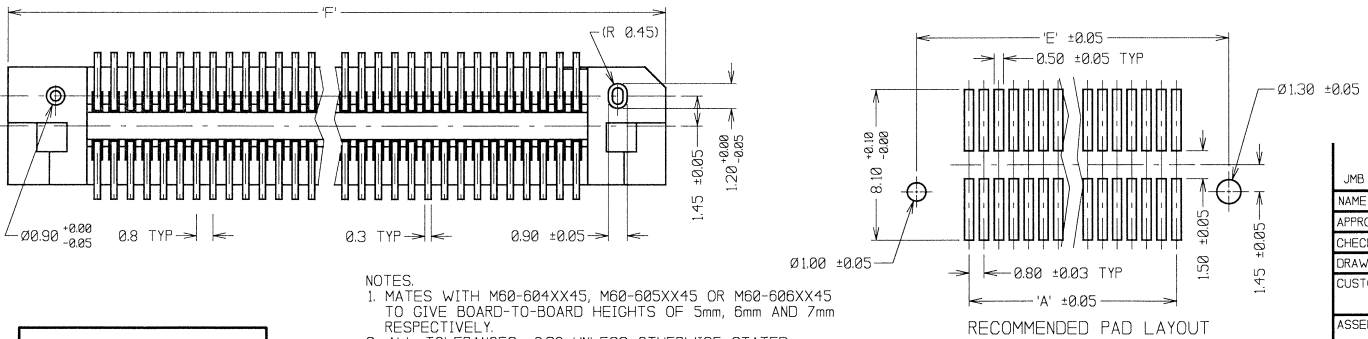
**MECHANICAL:**

DURABILITY = 30 CYCLES

**ENVIRONMENTAL:**

TEMPERATURE RANGE = -55°C TO +100°C

PACKING = TUBE



**NOTES:**

- MATES WITH M60-604XX45, M60-605XX45 OR M60-606XX45 TO GIVE BOARD-TO-BOARD HEIGHTS OF 5mm, 6mm AND 7mm RESPECTIVELY.
- ALL TOLERANCES ±0.30 UNLESS OTHERWISE STATED.

ORDER CODE:  
**M60-614XX45**

No. OF CONTACTS  
10, 15, 20, 25, 30, 40, 50

**HARWIN**

HARWIN USA TEL: 803 893 5376 FAX: 803 893 5386 mis@harwin.com	HARWIN Europe (UK) TEL: 023 9231 4545 FAX: 023 9231 4590 mis@harwin.co.uk	HARWIN Asia TEL: +85 6 778 4909 FAX: +85 6 778 3868 mis@harwin.com.sg
--	--	--

THIS DRAWING AND ANY INFORMATION OR DESCRIPTIVE MATTER SET OUT HEREON ARE CONFIDENTIAL AND COPYRIGHT PROPERTY OF THE HARWIN GROUP AND MUST NOT BE DISCLOSED, LOANED, COPIED OR USED FOR MANUFACTURING TENDERING OR FOR ANY OTHER PURPOSE WITHOUT THEIR WRITTEN PERMISSION.

TOLERANCES
X = ± 0.1mm
XX = ± 0.25mm
XXX = ± 0.10mm
XXX = ± 0.1mm
ANGLES = ± 5° UNLESS STATED

MATERIAL:	SEE ABOVE
FINISH:	SEE ABOVE
S/AREA:	mm <sup>2</sup>

TITLE:	0.80mm PITCH SMT PLUG CONNECTOR (4mm HIGH)
DRAWING NUMBER:	M60-614XX45
SHT	2 OF 2

JMB	9	17/07/06	9324
NAME	ISS.	DATE	C/NOTE
APPROVED:			
CHECKED:			
DRAWN: WJ BOURNE			
CUSTOMER REF.:			
ASSEMBLY DRG:			