

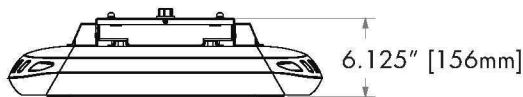
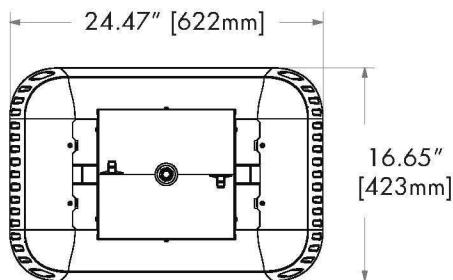
Prepared By	Catalog #	
Project	Comments	Date



### FEATURES & BENEFITS






- Up to 35% more efficient than comparable 400w metal halide systems
- Instant on and instant restrike
- Highly consistent light output over entire ambient temperature range
- Reduced maintenance- 3-5x longer life than fluorescent or HID systems
- Pendant, cable or hook mounting
- Field replaceable driver
- RoHS compliant

### DIMENSIONS



## BAYLIGHT

Breaking LED light output barriers for industrial applications, the Baylight is ideal for cold storage and other complex environment applications.

FEATURES	IHB1	IHB2
<b>Lumen Output (at operating temperature)</b>	18,000	24,000
<b>Input Power (Watts)</b>	200	300
<b>Efficacy (lm/w)</b>	90	80
<b>Color Temperature (CCT)</b>	4000K, 5000K	
<b>Color Rendering Index (CRI)</b>	70	
<b>Rated Life</b>	> 100,000 Hours @ 25°C	
<b>L70</b>	> 60,000 Hours @ 40°C	
<b>Housing</b>	Die Cast and Extruded Aluminum, heavy-gauge cold rolled steel	
<b>Finish</b>	Powder Coated	
<b>Optical Distribution</b>	Type V Wide Distribution	
<b>Mounting Options</b>	Pendant, Hook Cable	
<b>Dimensions</b>	24.47" x 16.65" x 6.125" 622mm x 423mm x 156mm	
<b>Operating Temperature</b>	-40°C to +40°C (-40°F to +104°F)	
<b>Voltage</b>	120-277 VAC @ 50-60 Hz	
<b>Weight</b>	IHB1, IHB2 38lbs	
<b>Rated Power Factor</b>	>0.9	
<b>Off State Power</b>	Zero	
<b>Warranty</b>	5 Year Limited	
<b>Certification</b>	   	
<b>Environment</b>		

!All values are nominal

# BAYLIGHT

## ORDERING INFORMATION \ \ IHB2 NW MVOLT PND GR

Product	Color Temp.	Optical Distribution	Voltage	Mounting	Finish	Options
IHB1 BayLight (200W)	NW White 4000K	W Wide	MVOLT Multi-Volt	PND Pendant Mount	GR Gray	NOM NOM Certification
IHB2 BayLight (300W)	CW White 5000K				BLK Black	
					BZ Bronze	
					WH White	

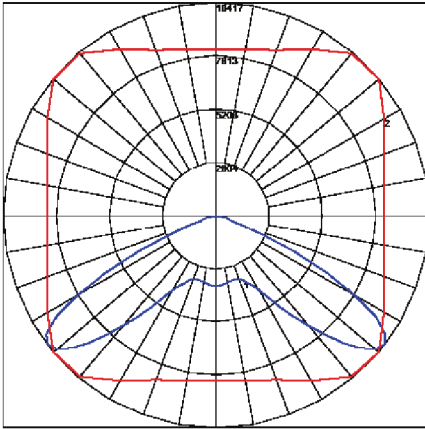
## BAYLIGHT PERFORMANCE SPECIFICATIONS

Performance Package	Optic	Input Watts	4000K CCT				Total Current @ 120V	Total Current @ 240V	Total Current @ 277V	L70 Life (hrs)	
			Delivered Lumens	Efficacy (LPW)	CRI	Power Factor				@ 25°	@ 40°
IHB1	W	200	18000	90	70	≥.9	1.66	0.85	0.78	>100k	>67k
IHB2	W	300	24080	80	70	≥.9	2.5	1.94	1.14	>100k	>67k

1 Requires installation via aircraft cable (by others)  
2 For applications below 0° C, consult factory.

## POLAR GRAPH

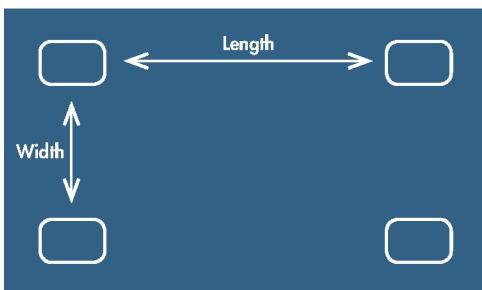
IHB2 NW W MVOLT PND GR



## ZONAL LUMEN SUMMARY

Zone	Lumens	% Fixt
0-30	3039.74	12.60
0-40	6623.92	27.50
0-60	20358.87	84.50
0-90	24080.03	100
90-120	0	0
90-130	0	0
90-150	0	0
90-180	0	0
0-180	24080.03	100

## BAYLIGHT ESTIMATOR GUIDE



Aerial Perspective

Spacing (Width x Length)	IHB2 Maintained at 20,000 hrs.	400W MH LowBay Maintained at 20,000 hrs.
16ft x 16ft	66	61
20ft x 16ft	55	51
20ft x 20ft	46	45

These numbers are a guide based on noted spacing and a 22ft mounting height with a 3' pendant length. Results may vary in field due to obstructions, reflectance values and temperature. Assumes 80% ceiling reflectance, 50% wall reflectance and 20% floor reflectance.