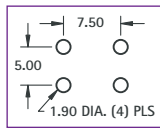


# METRIC - "SNAP-IN" PC SCREW TERMINALS



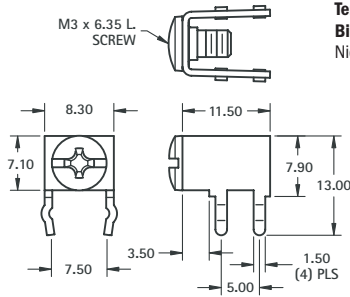
Mounting Detail



**CAT. NO. 7790** (Supplied Less Screw)

**CAT. NO. 7689** (Screw Supplied Unassembled)

**CAT. NO. 7695** (Screw Installed & Captivated)



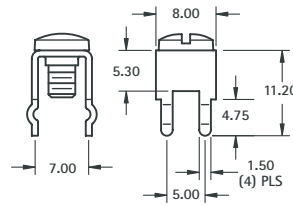
**M3 HORIZONTAL**

## SPECIFICATIONS

**Rated:** 15 Amps

**Terminal:** 0.81 thick Brass, Tin Plate

**Binding Head Screw:** Brass, Nickel Plate



**M3 VERTICAL**

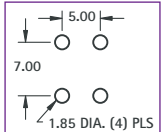
**CAT. NO. 7788** (Supplied Less Screw)

**CAT. NO. 7698** (Screw Supplied Unassembled)

**CAT. NO. 7696** (Screw Installed & Captivated)



Mounting Detail



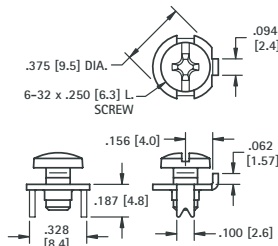
NOTE: All dimensions are in millimeters

## LOW PROFILE SCREW TERMINALS

These sturdy, low cost screw terminals, feature an anti-rotation tab for use with spade terminals. They are available with the screw installed and captivated, the screw unassembled or without a screw.



**6-32**



## SPECIFICATIONS

**Rated:** 15 Amps

**Terminal:** .032 (.81) thick Brass, Tin Plate

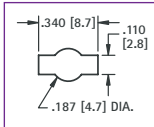
**Screw:** Combination drive, Stainless Steel

**CAT. NO. 1284** (Supplied Less Screw)

**CAT. NO. 1298** (Screw Supplied Unassembled)

**CAT. NO. 1201** (Screw Installed & Captivated)

Mounting Detail

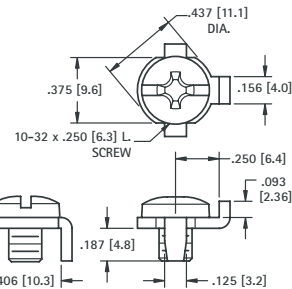


## PRINCIPLE FEATURES

- Easy to connect using solid or stranded wire, crimp lugs or terminals
- Anti-rotation tab for use with spade terminals
- Supplied with screw installed and captivated, with screw unassembled, or without screw
- Stainless steel screw will not wick



**10-32**



## SPECIFICATIONS

**Rated:** 30 Amps

**Terminal:** .062 (1.6) thick Brass, Tin Plate

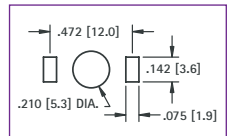
**Screw:** Combination drive, Stainless Steel

**CAT. NO. 1293** (Supplied Less Screw)

**CAT. NO. 1299** (Screw Supplied Unassembled)

**CAT. NO. 1202** (Screw Installed & Captivated)

Mounting Detail

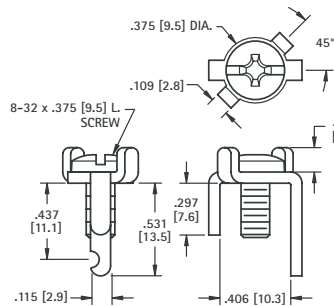


## HEAVY DUTY SCREW TERMINALS

These heavy duty terminals are available with the screw installed or unassembled, and feature easy access to connect solid or stranded wire, crimp type lugs or terminals.



**8-32**



## SPECIFICATIONS

**Rated:** 15 Amps

**Terminal:** .064 (1.6) thick Brass, Tin Plate

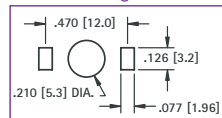
**Screw:** Brass, Nickel Plate

**CAT. NO. 1205** (Supplied Less Screw)

**CAT. NO. 1207** (Screw Supplied Unassembled)

**CAT. NO. 1209** (Screw Installed)

Mounting Detail

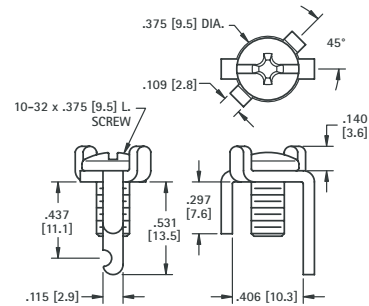


## PRINCIPLE FEATURES

- Anti-rotation tab for use with spade terminals
- Below the board notched leg, to facilitate mechanical and solder connections
- Easy to connect using solid or stranded wire, crimp lugs or terminals
- Available with screw installed, unassembled, or without screw



**10-32**



## SPECIFICATIONS

**Rated:** 30 Amps

**Terminal:** .064 (1.6) thick Brass, Tin Plate

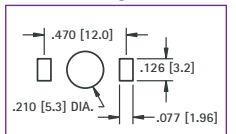
**Screw:** Steel, Nickel Plate

**CAT. NO. 1206** (Supplied Less Screw)

**CAT. NO. 1208** (Screw Supplied Unassembled)

**CAT. NO. 1283** (Screw Installed)

Mounting Detail



SCREW TERMINALS