

Datasheet: K84-1081.7 Set - Transparent Halo Bezel and Switch Set



Description:

Panel mount transparent plastic switch bezel with mounting flange/light guide and one normally open PCB mount switch element with mounting screws.

Assembly:

The transparent actuator is mounted into a 22.5mm panel cut-out. The switch element is soldered onto a separate PCB (not supplied) along with the auxiliary SMD LED's for the light halo (not supplied) and an optional centre illumination LED (not supplied). The mounting flange is screwed onto the PCB and fixes to the back of the actuator with a snap-on connection. Standard gerber files for the PCB layout are available. A coloured

Specifications:

Switching system

Single-interrupting snap-action switch system with two independent contact points and tactile switching point. Secure switching even in the case of minimum operational data. Contact mounting: one normally-open contact.

Environmental conditions

Storage temperature: $-40\text{ }^{\circ}\text{C} \dots +85\text{ }^{\circ}\text{C}$
Operating temperature; $-25\text{ }^{\circ}\text{C} \dots +70\text{ }^{\circ}\text{C}$
Type of front protection: IP67 (IEC 60529)

Key mechanical figures

Assembly drilling 22.5 mm dia.
Operating force 4.0 N \pm 0.2 N (measured at the lens)
Actuating distance \sim 0.5 mm
Mechanical useful life \geq 1 million switch cycles

Key electrical figures

Switching element 1 million switch cycles 24 VDC 100 mA
Voltage 50 mVAC / DC ... 42 VAC / DC
Current 10 μ A ... 100 mA, output max. 2 W
Approvals CE conformity declaration / RoHS

EAO Switch components in assembly

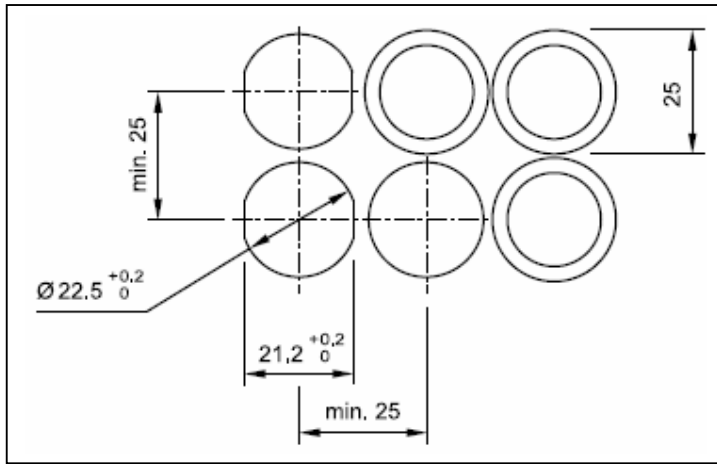
Illuminated pushbutton actuator transparent bezel IP67 sealed:
Switch element:
Mounting flange/light guide with two screws:

84-1081.7
92-851.342
84-960.0

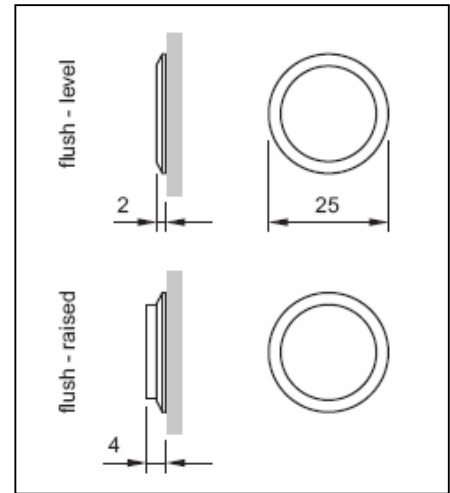
EAO reserves the right to alter specifications without further notice

Dimensions

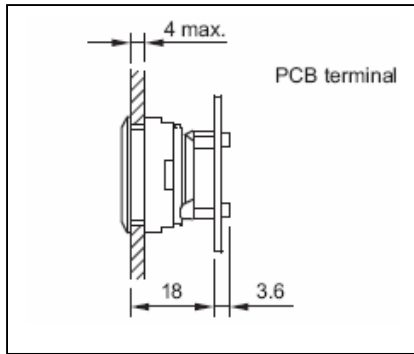
Panel Cut-out



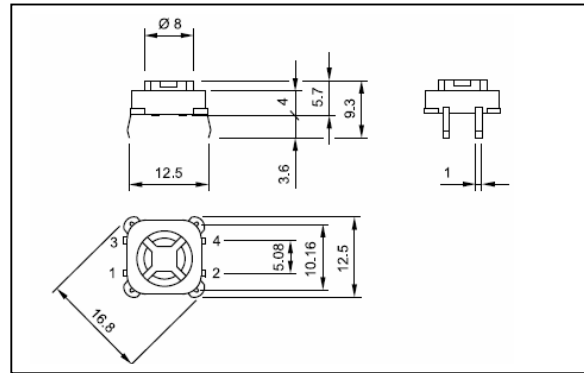
Front Profile



Assembly Drawing



Switch Element

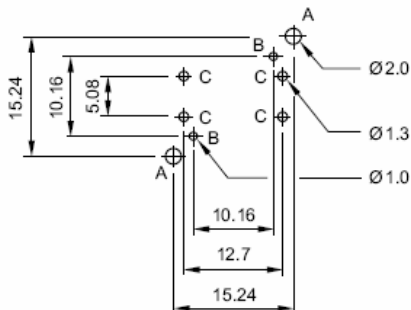


PCB Switch Drilling Plan

Single-LED

Drilling plan (Elementside)

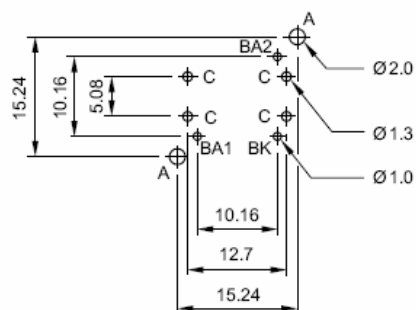
- A Fixing holes for mounting flange (92-960.0)
- B Holes for LED
- C Holes for contact pins
Pad max. Ø 2.5 mm
Through-connection recommended



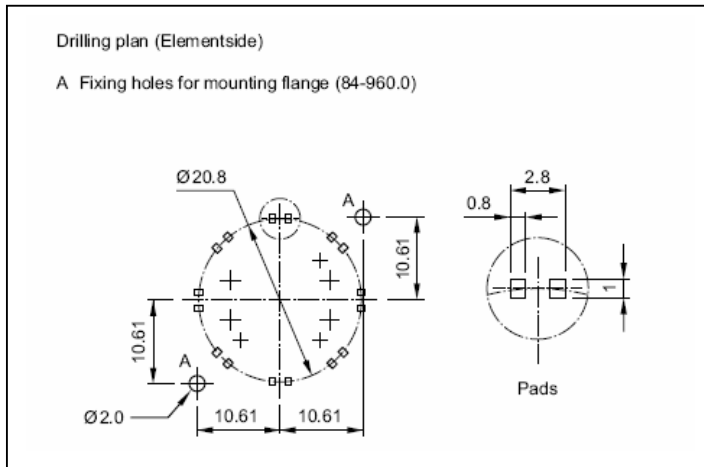
Bi-colour-LED

Drilling plan (Elementside)

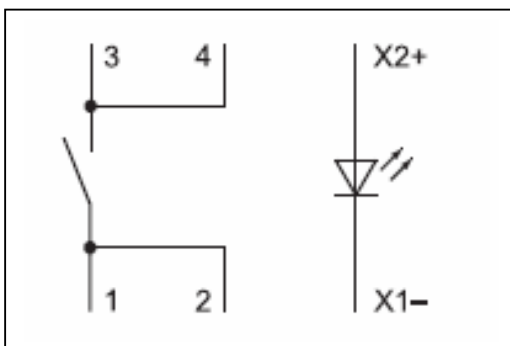
- A Fixing holes for mounting flange (92-960.0)
- B Holes for Bi-colour LED:
BA1 (green) + BA2 (yellow or red) = Anodes, BK = Cathode
- C Holes for contact pins
Pad max. Ø 2.5 mm
Through-connection recommended



LED Drilling Plan



Circuit Drawing



Useful Links:

Full Data on EAO Series 84 Switch Range

http://www.eao.com/global/en/Catalogues/PDF_Data_with_drawings/EAO_Recommended_Series/EAO-Series-84-Full-Data.pdf

Halo Switch Concept

<http://www.youtube.com/watch?v=s4TmCmq5RMs>