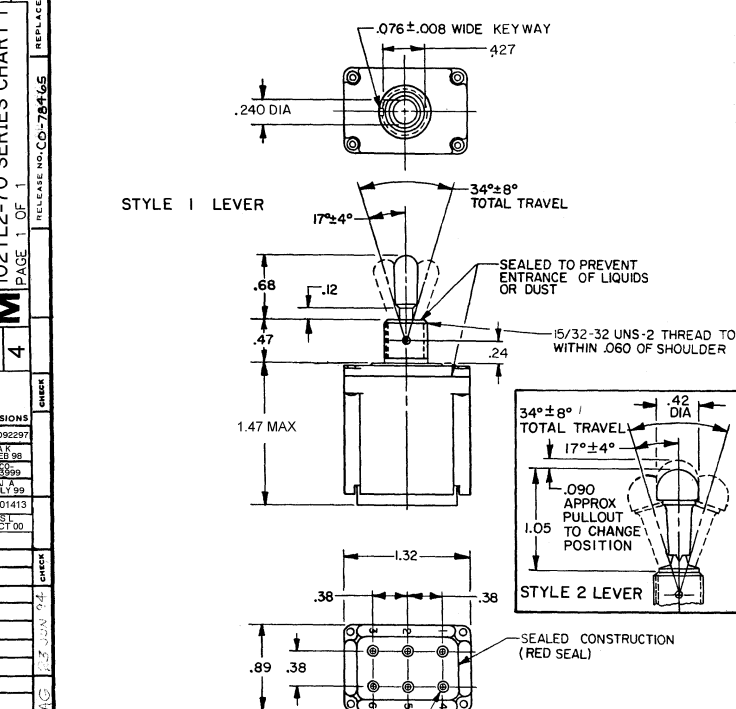


MICRO SWITCH
 FREEPORT ILLINOIS U.S.A.
 A DIVISION OF HONEYWELL
 FED. MFG. CODE 81929

SWITCH-TOGGLE

CATALOG LISTING
102TL2-70 SERIES
CHART 1

THIS DRAWING COVERS A PROPRIETARY ITEM AND IS THE PROPERTY OF MICRO SWITCH, A DIVISION OF HONEYWELL. THIS DRAWING IS NOT TO BE COPIED OR USED WITHOUT THE APPROVAL OF MICRO SWITCH.



SCALE **FULL**
 DO NOT SCALE PRINT
 UNLESS OTHERWISE NOTED
 DIMENSIONS ARE IN INCHES
TOLERANCES ARE:
 ONE PLACE .100 ± .030
 TWO PLACE .003 ± .018
 THREE PLACE .0001 ± .005
 ANGLES ± .005
 WEIGHT .135 LB MAX

MS NUMBER	CATALOG LISTING	AVAILABLE LOCKING COMBINATIONS FOR CONFIGURATION SEE LETTERING DETAILS	STYLE NUMBER	CURRENT CAPACITY (AMPS)								
				RESISTIVE LOAD DC VOLTS		AC VOLTS		LAMP LOAD		INDUCTIVE LOAD		
27785-3	102TL2-70	NONE	1	28	125	250	125	250	28 VDC	125 VDC	28 VDC	125 VDC
27788-3	102TL2-70/6	A,B,D,E,F,G,H,J,K,L,M,N,P	2	18	.75	.5	11	6	5	2	10	8
"A"	"B"	"D"	"E"	"F"								
LOCKED IN THREE POSITIONS	LOCKED IN CENTER AND EXTREME POSITION (KEYWAY SIDE)	LOCKED OUT OF CENTER POSITION	LOCKED IN CENTER POSITION	LOCKED IN EXTREME POSITION (OPPOSITE KEYWAY)	LOCKWASHER							
"G"	"H"	"J"	"K"	"L"								
LOCKED IN EXTREME POSITION (KEYWAY SIDE)	LOCKED OUT OF CENTER AND EXTREME POSITION (KEYWAY SIDE)	LOCKED OUT OF CENTER AND EXTREME POSITION (OPPOSITE KEYWAY)	LOCKED IN CENTER AND EXTREME POSITION (OPPOSITE KEYWAY)	LOCKED OUT OF EXTREME POSITION (KEYWAY SIDE)	LOCKING RING							
"M"	"N"	"P"	LOCKED OUT OF AND INTO EXTREME POSITION (OPPOSITE KEYWAY)									
CIRCUIT MADE WITH TOGGLE LEVER IN												
KEYWAY SIDE			CENTER			OPPOSITE KEYWAY						
MOMENTARY POSITION			MAINTAINED POSITION			MOMENTARY POSITION						

NOTES

- SWITCHES ARE CAPABLE OF WITHSTANDING A TEMPERATURE OF 160°F CONTINUOUSLY AT FULL RATED LOAD
- CIRCUIT DESIGNATION, MICRO SWITCH CATALOG LISTING, DATE CODE AND MS NUMBER IDENTIFIED ON SIDE OF SWITCH FURNISHED UNASSEMBLED
- UNUSED TERMINAL HOLES MAY BE SEALED WITH PLUGS M83723/28-20
- KEYWAY SHOWN ON LEFT SIDE
- SUFFIX LETTER MUST BE ADDED FOR DESIRED TYPE TOGGLE LOCKING
- THE SEALING GROMMET SHALL SEAL ON A SMOOTH WIRE INSULATION OF .040 TO .083 DIAMETERS (16-20 GAGE)

102TL2-70 SERIES CHART 1
 PAGE 1 OF 1
 ISSUE 4
 REVISIONS
 A 5092297 J.K.K. 10 FEB 68
 B 83899 7.41.799
 C 201413 4.21.100
 D 4.01.100
 DRAWN RASTER
 CHECKED K.A.C. 12.2.68
 APPROVED 9.10.68
 102TL2-70 SERIES
 RELEASE NO. CO-78465