

CATALOG LISTING  
4TL1 SERIES  
CHART 2

ISSUE  
31

REVISIONS  
A CO-8850  
26 JUN 95  
B CO9262  
5 MAR 98  
C CO9262  
23 NOV 99

FORMTEK  
DRAWN  
WJM  
7 DEC 82  
CHECK  
WJM  
19 DEC 82

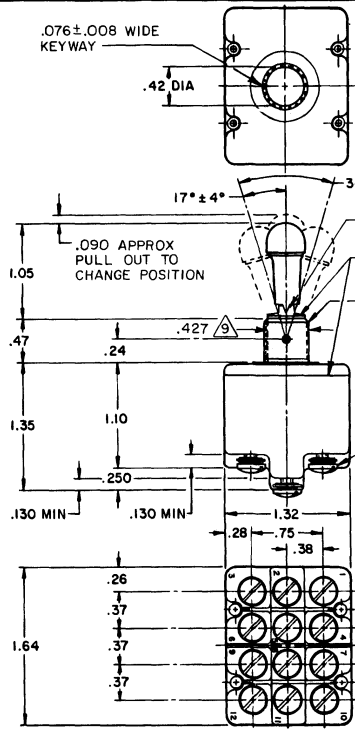
REPLACES  
PR-3384

**MICRO SWITCH**  
FREMONT ILLINOIS U.S.A.  
A DIVISION OF HONEYWELL  
FED. MFG. CODE 91928

**SWITCH - TOGGLE**

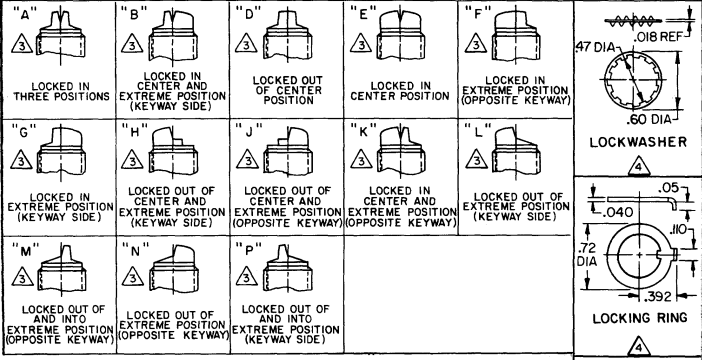
CATALOG LISTING  
**4TL1 SERIES**  
CHART 2

THIS DRAWING COVERS A PROPRIETARY ITEM AND IS THE PROPERTY OF MICRO SWITCH, A DIVISION OF HONEYWELL. THIS DRAWING IS NOT TO BE COPIED OR USED WITHOUT THE APPROVAL OF MICRO SWITCH.



15A-125, 250 OR 277 VAC 1/2HP-125VAC; 1HP-250, 277VAC 5A-125VAC "L" CODE L191	UL CE
10A-125, 250, 277 VAC 1/4HP-125VAC; 1/2HP-250, 277VAC 3A-125VAC "L" CODE 192	UL CE

MS NUMBER	CATALOG LISTING	AVAILABLE LOCKING COMBINATIONS FOR CONFIGURATION SEE LETTERING DETAILS	CIRCUIT MADE WITH TOGGLE LEVER IN			MILITARY RATING (AMPS)								
			KEYWAY SIDE (1-2, 4-5) (7-8, 10-11)	CENTER (1-2, 4-5) (7-8, 10-11)	OPPOSITE KEYWAY (2-3, 5-6) (8-9, 11-12)	RESISTIVE LOAD		LAMP LOAD						
			ON	OFF	ON	DC VOLTS	AC VOLTS	28 VDC	28 VAC	125 VDC	125 VAC			
24660-21	4TL1-1	A,B,D,E,F,G,H,K,L,M,NP	ON	OFF	ON	20	75	5	15	6	5	4	12	15
24660-22	4TL1-2	D, F, G	OFF	NONE	ON									
24660-23	4TL1-3	D, F, G	ON	NONE	ON									
24660-24	4TL1-21	E, F, K, M	NONE	OFF	ON									
24660-33	4TL1-31	E, F, K, M	NONE	ON	ON									
24660-29	4TL1-4	F	MOM OFF	NONE	ON									
24660-31	4TL1-5	E, F, K, L, M, N	MOM ON	OFF	ON									
24660-30	4TL1-6	F	MOM ON	NONE	OFF									
24660-27	4TL1-7	E, L, N	MOM ON	OFF	MOM ON	18	75	5	11	6	4	2	10	8
24660-26	4TL1-8	F	MOM ON	NONE	ON									
24660-32	4TL1-51	E	NONE	ON	MOM ON									
24660-28	4TL1-61	E	MOM ON	OFF	NONE									



- NOTES
- 1 - SWITCHES ARE CAPABLE OF WITHSTANDING TEMPERATURE OF 160°F CONTINUOUSLY AT FULL RATED LOAD
  - 2 - CIRCUIT DESIGNATION, MICRO SWITCH CATALOG LISTING AND MS NUMBER MARKED ON SIDE OF SWITCH
  - 3 - KEYWAY SHOWN ON LEFT SIDE
  - 4 - FURNISHED UNASSEMBLED
  - 5 - THESE SWITCHES ARE QUALIFIED UNDER MIL-S-3950
  - 6 - FOR TERMINAL COVER SEE MICRO SWITCH CATALOG LISTING 5PA9
  - 7 - SUFFIX LETTER MUST BE ADDED FOR DESIRED TYPE TOGGLE LOCKING
  - 8 - SEE CHART FOR AVAILABLE LOCKING COMBINATIONS
  - 9 - APPLIES ONLY TO "ON" AND "MOM ON" POSITIONS
  - 10 - FROM BOTTOM OF KEYWAY TO MAJOR DIAMETER OF 15/32 THREAD

THIRD ANGLE PROJECTION

SCALE FULL

DO NOT SCALE PRINT

TOLERANCES

APPLY TO DIMENSIONS UNLESS OTHERWISE SPECIFIED

NO. PLACES	FRAC.	TOL.	NO. PLACES	FRAC.	TOL.
1	1/16"	± .005	2	1/32"	± .002
2	1/32"	± .002	3	1/64"	± .001
3	1/64"	± .001	4	1/128"	± .0005
4	1/128"	± .0005	5	1/256"	± .0002

DESIGN UNITS:  METRIC  U.S. CUSTOMARY

WEIGHT