



MICRO SWITCH

FREEPORT, ILLINOIS, U.S.A.
A DIVISION OF HONEYWELL

FED. MFG. CODE 91929

SWITCH-BASIC

CATALOG LISTING
DT-2RV23-A7

S

DT-2RV23-A7

REPLACES

RELEASE NO.

DRAWING NUMBER

ISSUE

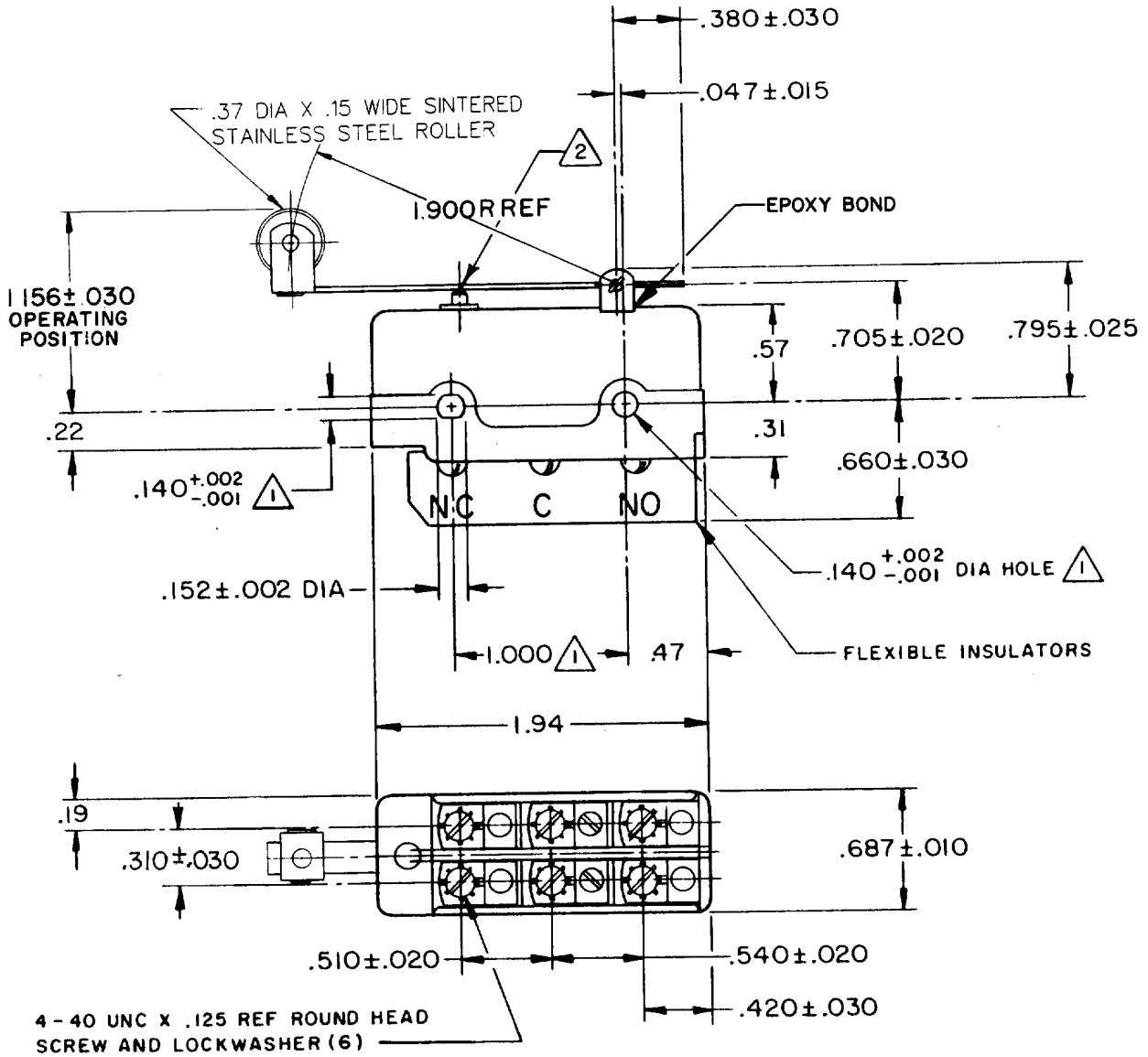
CHECK

REVISIONS

A	CO17725	L E B	20 JUNE 63
B	CO17725	L E B	28 AUG 63
C	CO24941	M B S	2 DEC 68
D	CO26132	M B S	21 JULY 69
E	CO26075	M B S	26 AUG 69
F	CO37528	C J H	31 AUG 76
G	CO39280	K P	31 MAR 77
H	CO39046	G A S	16 SEPT 77
J	CO46028	W J M	13 JUN 79
K	CO61634	TSK	17 JUL 87
L	75204-B	S A V	1 FEB 94

DRAWN

FO-80378



NOTE -

- 1 MOUNTING HOLES WILL ACCEPT PINS OR SCREWS OF .139 MAX DIA ON 1.000 ± .002 CENTERS
- 2 OVERTRAVEL TO BE MEASURED AT CENTER LINE OF PLUNGER

THIS DRAWING COVERS A PROPRIETARY ITEM AND IS THE PROPERTY OF MICRO SWITCH, A DIVISION OF MINNEAPOLIS-HONEYWELL REGULATOR CO. THIS DRAWING IS NOT TO BE COPIED OR USED WITHOUT THE APPROVAL OF MICRO SWITCH.

CHARACTERISTICS	ELECTRICAL DATA	SCALE FULL
OPERATING FORCE ----- 5 1/2 9 1/2 OZ	CONTACT ARRANGEMENT D P D T	DO NOT SCALE PRINT
RELEASE FORCE ----- 3/4 OZ MIN	UL LISTED-FILE E12252	UNLESS OTHERWISE NOTED
PRETRAVEL ----- .195 MAX	CODE L59	DIMENSIONS ARE IN INCHES
DIFFERENTIAL TRAVEL ----- .085-.135	10A-125 OR 250 VAC	TOLERANCES ARE:
OVERTRAVEL ----- 2 .010 MIN	0.3A-125 VDC; 0.15A-250 VDC	ONE PLACE (.0) ± .030
	SR	TWO PLACE (.00) ± .015
		THREE PLACE (.000) ± .005
		ANGLES ±
		WEIGHT .105 LB MAX