

MICRO SWITCH

A DIVISION OF MINNEAPOLIS-MONTELL REGULATOR COMPANY
PERRIS, ILLINOIS

FED. MFR. CODE 91929

SWITCH-BASIC

CATALOG LISTING
5SE1-T

5SE1-T

M

DRAWING NUMBER

2

X 6

ISSUE

2

REPLACES

RELEASE NO. SR 6412

CNT 23 APR 57

CHECK

JRH 22 APR 57

CHECK

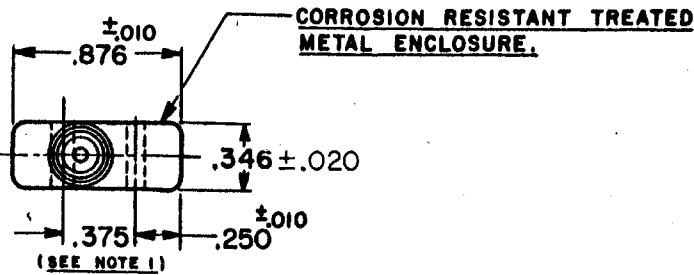
GCH 25 APR 57

CHECK

R.E.R. 20 APR 57

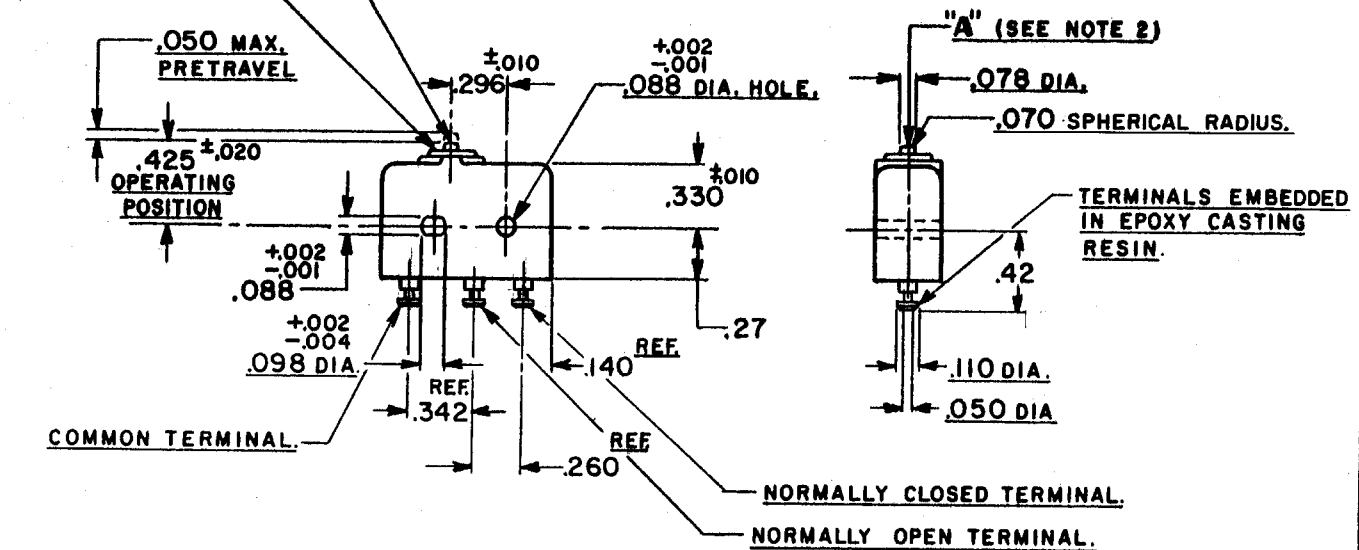
DRAWN

FO-50378



SPECIAL ELASTOMER PLUNGER SEAL

CORROSION RESISTANT STEEL PLUNGER.



NOTE:

- 1-MOUNTING HOLES WILL ACCEPT .087 MAX. DIA. PINS OR SCREWS ON .375 ^{±.002} CENTERS.
- 2-ACTUATION IN LINE WITH ARROW "A" IS RECOMMENDED.

THIS DRAWING COVERS A PROPRIETARY ITEM AND IS THE PROPERTY OF MICRO SWITCH, A DIVISION OF HONEYWELL. THIS DRAWING IS NOT TO BE COPIED OR USED WITHOUT THE APPROVAL OF MICRO SWITCH.

CHARACTERISTICS

OPERATING FORCE ----- 5-17 OZ.
RELEASE FORCE ----- 4 OZ. MIN.
RELEASE TRAVEL ----- .004 MIN.
DIFFERENTIAL TRAVEL ----- .004 MAX.
OVERTRAVEL ----- .003 MIN.

ELECTRICAL DATA

CONTACT ARRANGEMENT
S. P. D. T.

250 VAC ----- 5 AMP
30 VOLTS DC RATING

INDUCTIVE ----- SEA LEVEL ----- 3 AMP
50,000 FT. ----- 2.5 AMP

RESISTIVE ----- SEA LEVEL ----- 5 AMP
50,000 FT. ----- 5 AMP

(A) MAXIMUM INRUSH ----- 24 AMP

SCALE FULL

DO NOT SCALE PRINT

UNLESS OTHERWISE SPECIFIED
DIMENSIONS ARE IN INCHES
TOLERANCES ARE:
ONE PLACE (.0) ±.030
TWO PLACE (.00) ±.018
THREE PLACE (.000) ±.008
ANGLES ±.008

WEIGHT .26 OZ. MAX (B)