

MICRO SWITCH

A DIVISION OF MINNEAPOLIS-HONEYWELL REGULATOR COMPANY
MINNEAPOLIS, MINNESOTA

FED. MFR. CODE 91929

SWITCH-BASIC

CATALOG LISTING

101HS1

(M)101HS1
ISSUE 3

REPLACES

RELEASE NO.

CHECK

CHECK

CHECK

CHECK

CHECK

CHECK

CHECK

CHECK

CHECK

CHECK

101HS1

PAGE 1 OF 1

M

DRAWING NUMBER

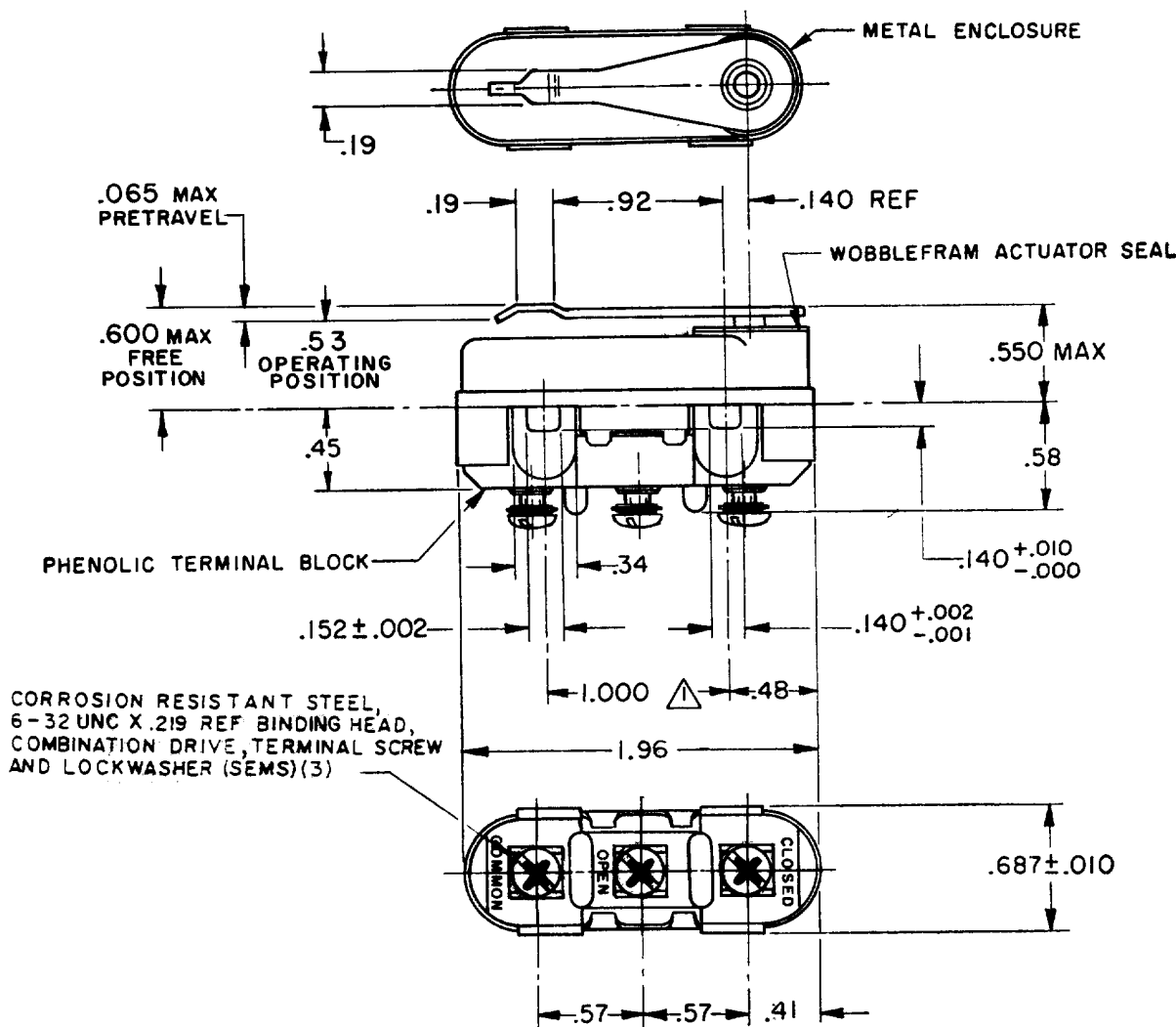
ISSUE

12

REVISIONS

A	CO15761	L M H	20 APR 61
B	CO15920	M B F	23 JUNE 61
C	CO29829	L S D	10 JAN 72
D	CO55162N	TSK	20 JAN 86
E	CO 62736	M A M	15 MAR 88
F	CO61043	B G S	16 SEP 88
G	CO 75625	J D B	15 JULY 93
H	CO 76375	W E S	2 SEP 93
J	CO-94122	T S M	17 MAR 99

FO-50378
FORMTEK



NOTE-

- 1 - MOUNTING HOLES WILL ACCEPT PINS OR SCREWS OF .139 MAX DIA ON 1.000 ± .002 CENTERS
- 2 - TRAVEL CHARACTERISTICS ARE REFERENCED FROM THE UPPER SURFACE OF THE MOUNTING HOLES WITH THIS CONSTRUCTION
- 3 - FOR USE IN AMBIENT TEMPERATURE RANGE FROM MINUS 65° F TO PLUS 250° F

THIS DRAWING COVERS A PROPRIETARY ITEM AND IS THE PROPERTY OF MICRO SWITCH, A DIVISION OF MINNEAPOLIS-HONEYWELL REGULATOR CO. THIS DRAWING IS NOT TO BE COPIED OR USED WITHOUT THE APPROVAL OF MICRO SWITCH.

CHARACTERISTICS	ELECTRICAL DATA (TENTATIVE)			SCALE FULL
OPERATING FORCE-----10-22 OZ	CONTACT ARRANGEMENT S P D T			DO NOT SCALE PRINT
RELEASE FORCE----- 4 OZ MIN	LINE VOLTAGE	INDUCTIVE LOAD	RESISTIVE LOAD	UNLESS OTHERWISE SPECIFIED DIMENSIONS ARE IN INCHES TOLERANCES ARE: ONE PLACE (.0) ±.030 TWO PLACE (.00) ±.015 THREE PLACE (.000) ±.008 ANGLES ±
DIFFERENTIAL TRAVEL----- .020 MAX	28 VAC	8 AMP	25 AMP	
OVERTRAVEL----- .010 MIN	125 VAC	1 AMP	5 AMP	
	(SEA LEVEL-100,000 FT)			
	(SEA LEVEL-70,000 FT)			
	ⓑ L277	A-125VAC, 5A-28VDC		WEIGHT 1.6 OZ MAX