



MICRO SWITCH

FREEPORT, ILLINOIS, U.S.A.
A DIVISION OF HONEYWELL

FED. MFG. CODE 91929

ASSEMBLY- PUSHBUTTON SWITCH

CATALOG LISTING
2PB249

M 2PB249

DRAWING NUMBER

ISSUE 8

RELEASE NO.

REVISIONS

A CO 19800
H B W
15 FEB 65

CHECK

19 FEB 65

CHECK

LSD

CHECK

15 FEB 65

DRAWN

FO-50378

REPLACES

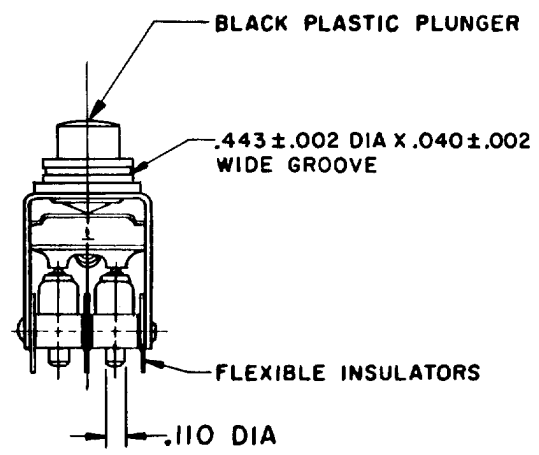
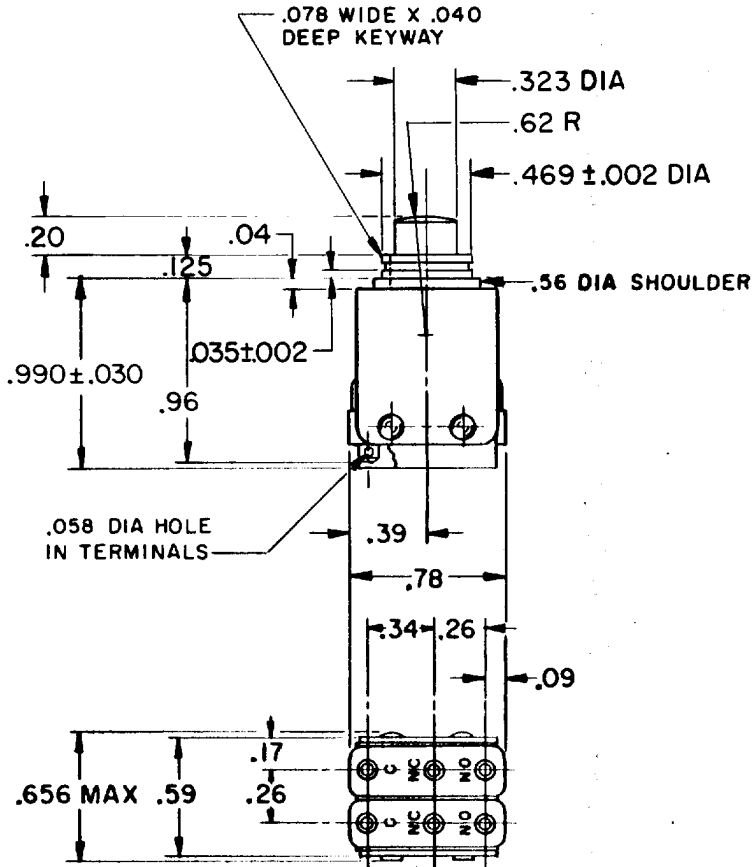
RELEASE NO.

CHECK

CHECK

CHECK

CHECK



- NOTE -
- 1- UNIT INCLUDES "ISM" TYPE BASIC SWITCH (2)
 - 2- TERMINALS ARE PLATED FOR SOLDERING
 - 3- SWITCHES DO NOT NECESSARILY OPERATE SIMULTANEOUSLY

THIS DRAWING COVERS A PROPRIETARY ITEM AND IS THE PROPERTY OF MICRO SWITCH, A DIVISION OF HONEYWELL. THIS DRAWING IS NOT TO BE COPIED OR USED WITHOUT THE APPROVAL OF MICRO SWITCH.

CHARACTERISTICS	ELECTRICAL DATA	SCALE FULL
OPERATING FORCE ——— 30 OZ APPROX	CONTACT ARRANGEMENT S P D T (2)	DO NOT SCALE PRINT
TOTAL TRAVEL ——— .100 APPROX	250 VAC ——— 5 AMP	UNLESS OTHERWISE NOTED DIMENSIONS ARE IN INCHES TOLERANCES ARE:
	30 VOLTS DC RATING	
	INDUCTIVE ——— SEA LEVEL ——— 3 AMP	
	INDUCTIVE ——— 50,000 FT ——— 2.5 AMP	
	RESISTIVE ——— SEA LEVEL ——— 5 AMP	ONE PLACE (.0) ±.030
	RESISTIVE ——— 50,000 FT ——— 5 AMP	TWO PLACE (.00) ±.015
	MAXIMUM INRUSH ——— 24 AMP	THREE PLACE (.000) ±.005
		ANGLES ±
		WEIGHT