

MICRO SWITCH
 FREEPORT, ILLINOIS, U.S.A.
 A DIVISION OF HONEYWELL
 FED. MFG. CODE 9-1922

SWITCH-TOGGLE

CATALOG LISTING
12TL1 SERIES
CHART 1

MILITARY STANDARDS NUMBER

CATALOG LISTING

WITH **▲** CIRCUIT MADE WITH TOGGLE LEVER IN
 KEYWAY SIDE (1-2,4-5) CENTER (1-2,4-5) OPPOSITE KEYWAY (2-3,5-6)

MILITARY RATING (AMPS)

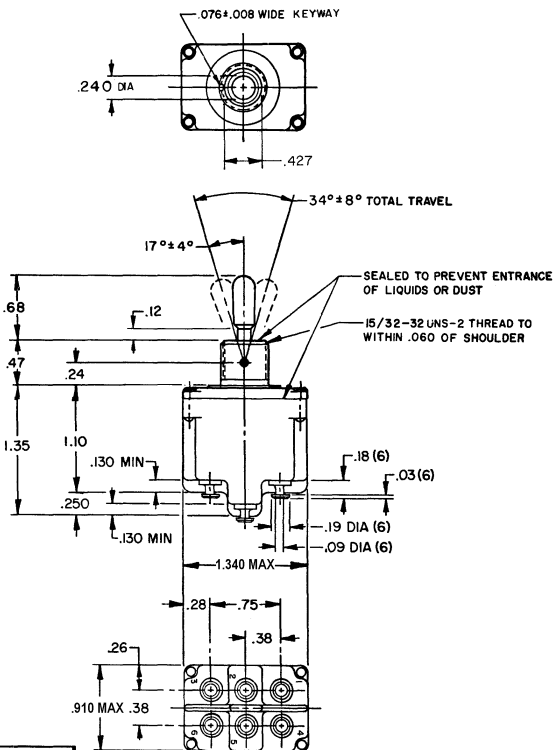
RESISTIVE LOAD DC VOLTS AC VOLTS LAMP LOAD 28 VDC 125 VAC 250 VDC 125 VAC 28 VDC 125 VAC INDUCTIVE LOAD 28 VDC 125 VAC

THIS DRAWING COVERS A PROPRIETARY ITEM AND IS THE PROPERTY OF MICRO SWITCH, A DIVISION OF HONEYWELL. THIS DRAWING IS NOT TO BE COPIED OR USED WITHOUT THE APPROVAL OF MICRO SWITCH.

MS 27735-21	I2TL1 - 1	ON	OFF	ON
MS 27735-22	I2TL1 - 2	OFF	NONE	ON
MS 27735-23	I2TL1 - 3	ON	NONE	ON
MS 27735-24	I2TL1 - 21	NONE	OFF	ON
MS 27735-33	I2TL1 - 31	NONE	ON	ON
MS 27735-29	I2TL1 - 4	MOM OFF	NONE	ON
MS 27735-31	(G)	MOM ON	OFF	ON
MS 27735-30	I2TL1 - 6	MOM ON	NONE	OFF
MS 27735-27	I2TL1 - 7	MOM ON	OFF	MOM ON
MS 27735-26	I2TL1 - 8	MOM ON	NONE	ON
MS 27735-32	I2TL1 - 51	NONE	ON	MOM ON
MS 27735-28	I2TL1 - 61	MOM ON	OFF	NONE

20	.75	.5	15	6	7	4	15	15
(REFER TO L191 FOR UL RATING)								
18	.75	.5	11	6	5	2	10	8
(REFER TO L192 FOR UL RATING)								

CATALOG LISTING
M 12TL1 SERIES CHART 1
 ISSUE 14
 PAGE 1 OF 1
 RELEASE NO. PR-1471
 REPLACES



REVISIONS
 A CO 38392
 B CO 49070
 C CO 48991
 D CO 48991
 E CO 000498
 F CO 38674
 G CO 76454
 H CO 25328
 J CO 0003088
 K CO 05 FEB 04

FORMTEK
 DATE: 125 MAR 78
 CHECK: 03 FEB 04

SCALE FULL
 DO NOT SCALE PRINT
 UNLESS OTHERWISE NOTED
 DIMENSIONS ARE IN INCHES
TOLERANCES ARE:
 ONE PLACE (.01) ±.000
 TWO PLACE (.00) ±.0018
 THREE PLACE (.000) ±.0008
 ANGLES ±.008

15A-125, 250 OR 277 VAC	10A-125, 250, 277 VAC
1/2 HP-125VAC; 1HP-250, 277 VAC	1/4HP-125VAC; 1/2HP-250, 277VAC
5A-125VAC "L" CODE L191	3A-125VAC "L" CODE L192

- NOTES**
- SWITCHES ARE CAPABLE OF WITHSTANDING A TEMPERATURE OF 160°F CONTINUOUSLY AT FULL RATED LOAD
 - CIRCUIT DESIGNATION, MICRO SWITCH CATALOG LISTING AND "MS" NUMBER MARKED ON SIDE OF SWITCH
 - FURNISHED UNASSEMBLED
 - FOR TERMINAL COVER SEE MICRO SWITCH CATALOG LISTING 5PA8
 - APPLIES ONLY TO "ON" AND "MOMENTARY ON" POSITIONS

