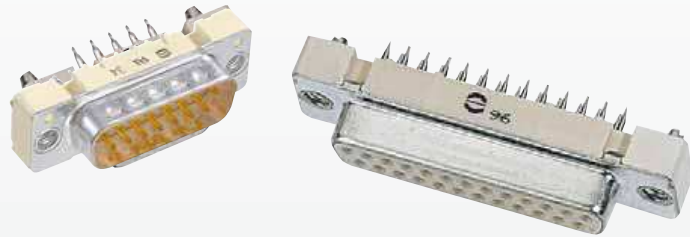


Number of contacts

# 9-50



Press-in, straight with grounding press-in board locks

Identification	No. of contacts	Part No.	
<b>Performance levels</b> Explanations see page 20.08 Other performance levels on request		Performance level <b>3</b>	Performance level <b>2</b>
<b>Male connector</b> Flange height x = 5.7 mm			
metal shell with dimples	9 15 25	09 66 164 771 . 09 66 264 771 . 09 66 364 771 .	09 66 164 671 . 09 66 264 671 . 09 66 364 671 .
Please insert digit for flange thread or fitted female screw locks			
M3 ▶ 5 4-40 UNC ▶ 6 fitted screw locks 4-40 UNC ▶ 7 <sup>1)</sup>			
<b>Female connector</b> Flange height x = 5.7 mm			
metal shell	9 15 25 37	09 66 154 751 . 09 66 254 751 . 09 66 354 751 . 09 66 454 751 .	09 66 154 651 . 09 66 254 651 . 09 66 354 651 . 09 66 454 651 .
Please insert digit for flange thread or fitted female screw locks			
M3 ▶ 5 4-40 UNC ▶ 6 fitted screw locks 4-40 UNC ▶ 7 <sup>1)</sup>			
<b>Female connector</b> Flange height x = 6 mm			
metal shell	9 15 25 37 50	09 66 154 751 . 09 66 254 751 . 09 66 354 751 . 09 66 454 751 . 09 66 554 751 .	09 66 154 651 . 09 66 254 651 . 09 66 354 651 . 09 66 454 651 . 09 66 554 651 .
Please insert digit for flange thread or fitted female screw locks			
M3 ▶ 1 4-40 UNC ▶ 2 fitted screw locks 4-40 UNC ▶ 3 <sup>1)</sup>			

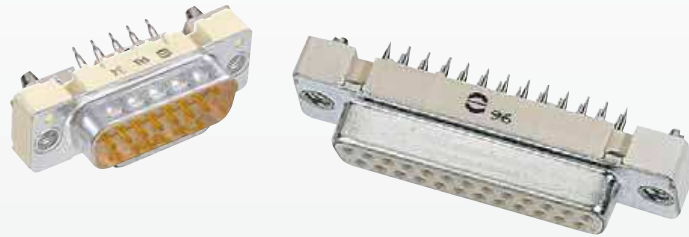
Press-in technology

20  
10

<sup>1)</sup> Fitted screw locks 4-40 UNC not normally kept in stock for performance level 3  
 Connector dimensions see page 20.11. Mating conditions see page 20.08.

Number of contacts

# 9-50



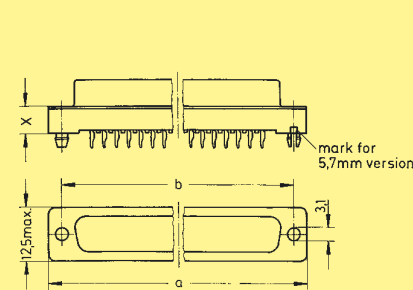
Press-in, straight with grounding press-in board locks

Identification

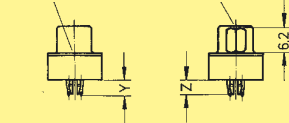
Drawing

Dimensions in mm

**Male connector**  
9 – 25 contacts

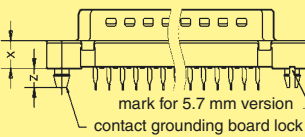


M 3 or 4 - 40 UNC      fitted screw locks 4 - 40 UNC

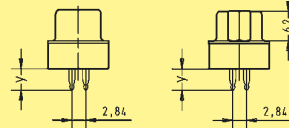


X	Y	Z
6.0 ± 0.2	4.20 ± 0.2	3.5 max.
5.7 ± 0.2	4.35 ± 0.2	3.9 max.

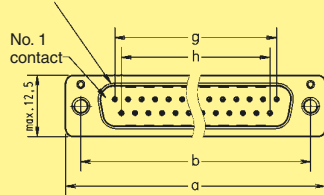
**Female connector**  
9 – 37 contacts



M 3 or 4 - 40 UNC      fitted screw locks 4 - 40 UNC

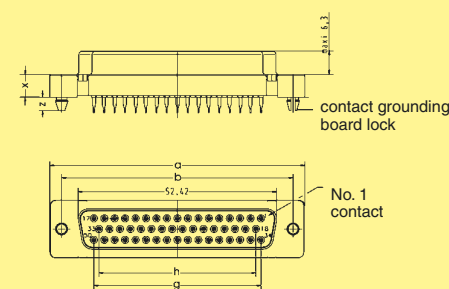


Mating face acc. to: DIN 41 652 · CECC 75 301-802 · IEC 60 807

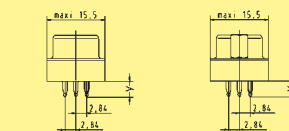


	a	b	g	h
9	31.00	24.90	4 x 2.74 = 10.96	3 x 2.76 = 8.22
15	39.30	33.20	7 x 2.74 = 19.18	6 x 2.76 = 16.44
25	53.10	47.00	12 x 2.76 = 33.12	11 x 2.76 = 30.36
37	69.65	63.55	18 x 2.76 = 49.68	17 x 2.76 = 46.92
50	67.00	61.10	16 x 2.76 = 44.16	15 x 2.76 = 41.40

**Female connector**  
50 contacts



M 3 or 4 - 40 UNC      fitted screw locks 4 - 40 UNC



**Board drillings**

