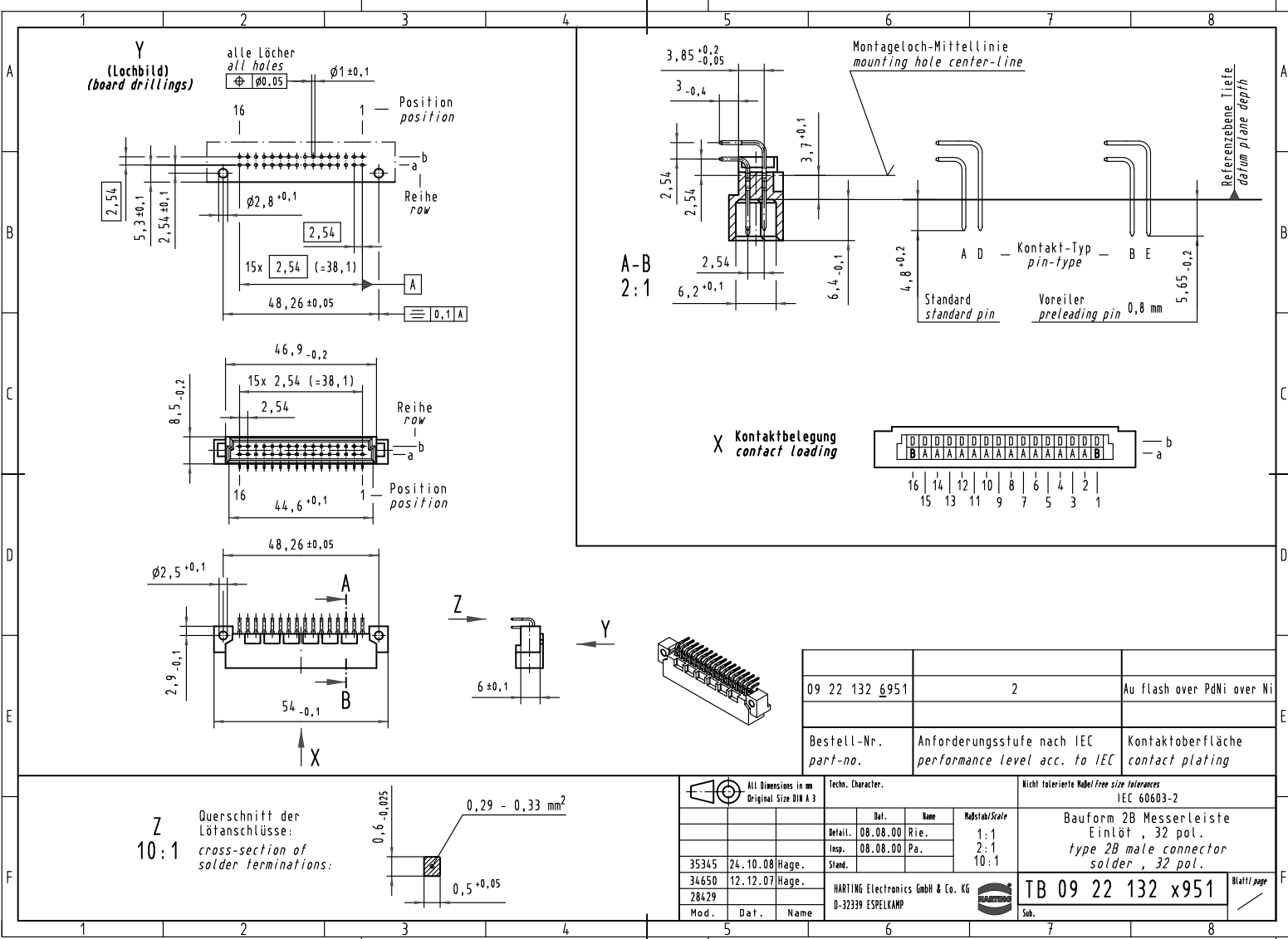
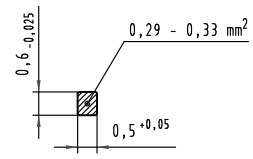


Alle Rechte vorbehalten. All rights reserved.



**Z**  
10:1  
Querschnitt der Lötanschlüsse:  
cross-section of solder terminations:



| All Dimensions in mm<br>Original Size DIN A 3 |          |       |
|---|----------|-------|
| 35345   | 24.10.08 | Hage. |
| 34650   | 12.12.07 | Hage. |
| 28429   |          |       |
| Mod.  | Dat.     | Name  |

| Techn. Character. |          |      |      |
|-------------------|----------|------|------|
| Detail.           | 08.08.00 | Rie. | 1:1  |
| Insp.             | 08.08.00 | Pa.  | 2:1  |
| Stand.            |          |      | 10:1 |

| Nicht tolerierte Maß/Free size Tolerances   |            |
|---|------------|
| IEC 60603-2   |            |
| Bauforn 2B Messerleiste<br>Einlöt, 32 pol.<br>type 2B male connector<br>solder, 32 pol. |            |
| TB 09 22 132 x951   | Blatt/page |
| Sub.  |            |

|                         |   |                                      |
|-------------------------|---|--------------------------------------|
| 09 22 132 6951          | 2   | Au flash over PdNi over Ni           |
| Bestell-Nr.<br>part-no. | Anforderungsstufe nach IEC<br>performance level acc. to IEC | Kontaktoberfläche<br>contact plating |