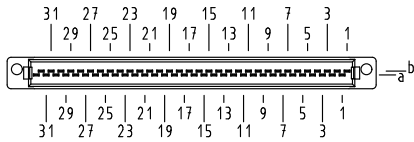


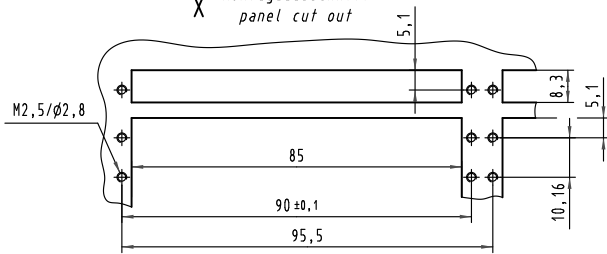
**Y** Kontakthanordnung  
contact arrangement



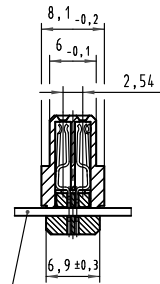
64 Kontakte  
64 contacts

- = Kontaktposition belegt  
= position with contact
- = Kontaktposition nicht belegt  
= position without contact

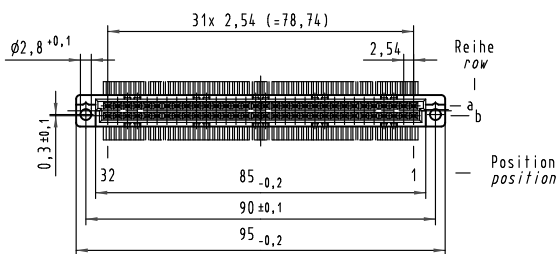
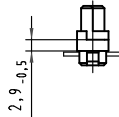
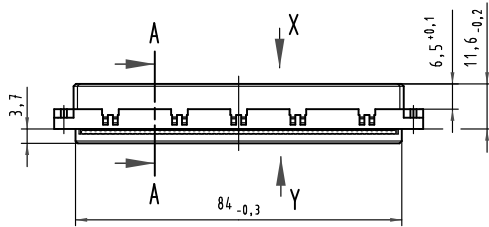
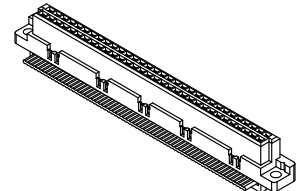
**X** Montageausschnitt  
panel cut out



**A-A**  
2:1



Flachleitung AWG 28/7  
Raster 1,27mm  
(gehört nicht zum Lieferumfang)  
flat cable AWG 28/7  
pitch 1,27mm  
(is not in scope of delivery)



Ader 1 des Flachkabels auf Kontakt 1b  
lead number 1 of flat cable on contact 1b

09 02 264 1828	3	Au über/over Ni
09 02 264 6828	2	Au über/over Ni
-	-	-
Bestell-Nr. part-no.	Anforderungsstufe nach IEC performance level acc.to IEC	Kontaktoberfläche contact plating

All Dimensions in mm Original Size DIN A 3	Techn. Character.			Nicht tolerierte Maß/Free size tolerances	
				IEC 60603-2	
	Detail.	25.02.08	LehT	Maßstab/Scale 1:1 2:1	Typ B Federleiste mit Schneidklemmen, 64 pol. type B female connector with insulation displacement, 64 pol.
	Insp.	25.02.08	mte		
Stand.					
34977			HARTING Electronics GmbH & Co. KG		TB 09 02 264 x828 Blatt/page
Mod.	Dat.	Name	D-32339 ESPELKAMP		