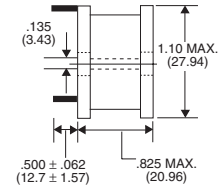
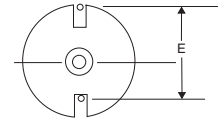




## DB3LF RoHS High Current Power Line Chokes

PART NUMBER	INDUCTANCE $\mu\text{H}$ @ 1 kHz	DCR OHMS (MAX)	SATURATION CURRENT DCAMPS	CURRENT RATING DCAMPS	E DIMENSIONS INCHES	LEAD DIAMETER	CORE MATERIAL
DB3-331LF	3.3 $\pm$ 20%	.002	74.0	29.9	.765 (19.43)	.0808 (2.05)	FERRITE
DB3-471LF	4.7 $\pm$ 20%	.003	54.0	24.4	.790 (20.07)	.0808 (2.05)	FERRITE
DB3-561LF	5.6 $\pm$ 20%	.003	54.0	24.4	.790 (20.07)	.0808 (2.05)	FERRITE
DB3-681LF	6.8 $\pm$ 20%	.003	47.0	24.4	.820 (20.83)	.0808 (2.05)	FERRITE
DB3-821LF	8.2 $\pm$ 20%	.003	42.0	24.4	.820 (20.83)	.0808 (2.05)	FERRITE
DB3-102LF	10 $\pm$ 10%	.004	38.0	21.1	.800 (20.32)	.0720 (1.83)	FERRITE
DB3-122LF	12 $\pm$ 10%	.005	35.0	18.9	.800 (20.32)	.0720 (1.83)	FERRITE
DB3-152LF	15 $\pm$ 10%	.006	32.0	17.2	.800 (20.32)	.0720 (1.83)	FERRITE
DB3-182LF	18 $\pm$ 10%	.007	29.0	16.0	.825 (20.96)	.0720 (1.83)	FERRITE
DB3-222LF	22 $\pm$ 10%	.008	25.0	14.9	.825 (20.96)	.0641 (1.63)	FERRITE
DB3-272LF	27 $\pm$ 10%	.009	23.0	14.1	.825 (20.96)	.0641 (1.63)	FERRITE
DB3-332LF	33 $\pm$ 10%	.010	20.0	13.4	.765 (19.43)	.0641 (1.63)	FERRITE
DB3-392LF	39 $\pm$ 10%	.018	19.1	10.0	.765 (19.43)	.0571 (1.45)	FERRITE
DB3-472LF	47 $\pm$ 10%	.018	19.0	10.0	.785 (19.94)	.0571 (1.45)	FERRITE
DB3-562LF	56 $\pm$ 10%	.024	17.5	8.6	.785 (19.94)	.0571 (1.45)	FERRITE
DB3-682LF	68 $\pm$ 10%	.024	15.6	8.6	.785 (19.94)	.0571 (1.45)	FERRITE
DB3-822LF	82 $\pm$ 10%	.024	14.0	8.6	.800 (20.32)	.0508 (1.29)	FERRITE
DB3-103LF	100 $\pm$ 10%	.033	13.2	7.4	.800 (20.32)	.0508 (1.29)	FERRITE
DB3-123LF	120 $\pm$ 10%	.038	12.1	6.9	.745 (18.92)	.0453 (1.15)	FERRITE
DB3-153LF	150 $\pm$ 10%	.051	10.8	5.9	.730 (18.54)	.0403 (1.02)	FERRITE
DB3-183LF	180 $\pm$ 10%	.055	9.7	5.7	.765 (19.43)	.0403 (1.02)	FERRITE
DB3-223LF	220 $\pm$ 10%	.061	8.7	5.4	.765 (19.43)	.0403 (1.02)	FERRITE
DB3-273LF	270 $\pm$ 10%	.090	7.9	4.5	.765 (19.43)	.0359 (0.91)	FERRITE
DB3-333LF	330 $\pm$ 10%	.094	7.1	4.4	.765 (19.43)	.0320 (0.81)	FERRITE
DB3-393LF	390 $\pm$ 10%	.129	6.7	3.7	.765 (19.43)	.0320 (0.81)	FERRITE
DB3-473LF	470 $\pm$ 10%	.142	6.0	3.5	.765 (19.43)	.0320 (0.81)	FERRITE
DB3-563LF	560 $\pm$ 10%	.162	5.5	3.3	.765 (19.43)	.0320 (0.81)	FERRITE
DB3-683LF	680 $\pm$ 10%	.217	5.0	2.9	.765 (19.43)	.0320 (0.81)	FERRITE
DB3-823LF	820 $\pm$ 10%	.240	4.5	2.7	.765 (19.43)	.0285 (0.72)	FERRITE
DB3-104LF	1000 $\pm$ 10%	.263	4.1	2.6	.765 (19.43)	.0285 (0.72)	FERRITE
DB3-124LF	1200 $\pm$ 10%	.325	3.7	2.3	.765 (19.43)	.0285 (0.72)	FERRITE
DB3-154LF	1500 $\pm$ 10%	.407	3.4	2.1	.780 (19.81)	.0253 (0.64)	FERRITE
DB3-184LF	1800 $\pm$ 10%	.500	2.8	1.9	.780 (19.81)	.0253 (0.64)	FERRITE
DB3-224LF	2200 $\pm$ 10%	.618	2.5	1.7	.740 (18.80)	.0226 (0.57)	FERRITE
DB3-274LF	2700 $\pm$ 10%	.850	2.3	1.4	.740 (18.80)	.0201 (0.51)	FERRITE
DB3-334LF	3300 $\pm$ 10%	.951	2.0	1.4	.740 (18.80)	.0201 (0.51)	FERRITE
DB3-394LF	3900 $\pm$ 10%	1.200	1.8	1.2	.740 (18.80)	.0201 (0.51)	FERRITE
DB3-474LF	4700 $\pm$ 10%	1.700	1.7	1.0	.680 (17.27)	.0179 (0.45)	FERRITE



in. (mm)

### NOTES:

- Operating temperature -55°C to +125°C
- Leads tinned to within .062 of body
- Epoxy insulated core
- Winding periphery wrapped to secure winding and lead positioning

### PACKAGING SPECS:

Bulk only.