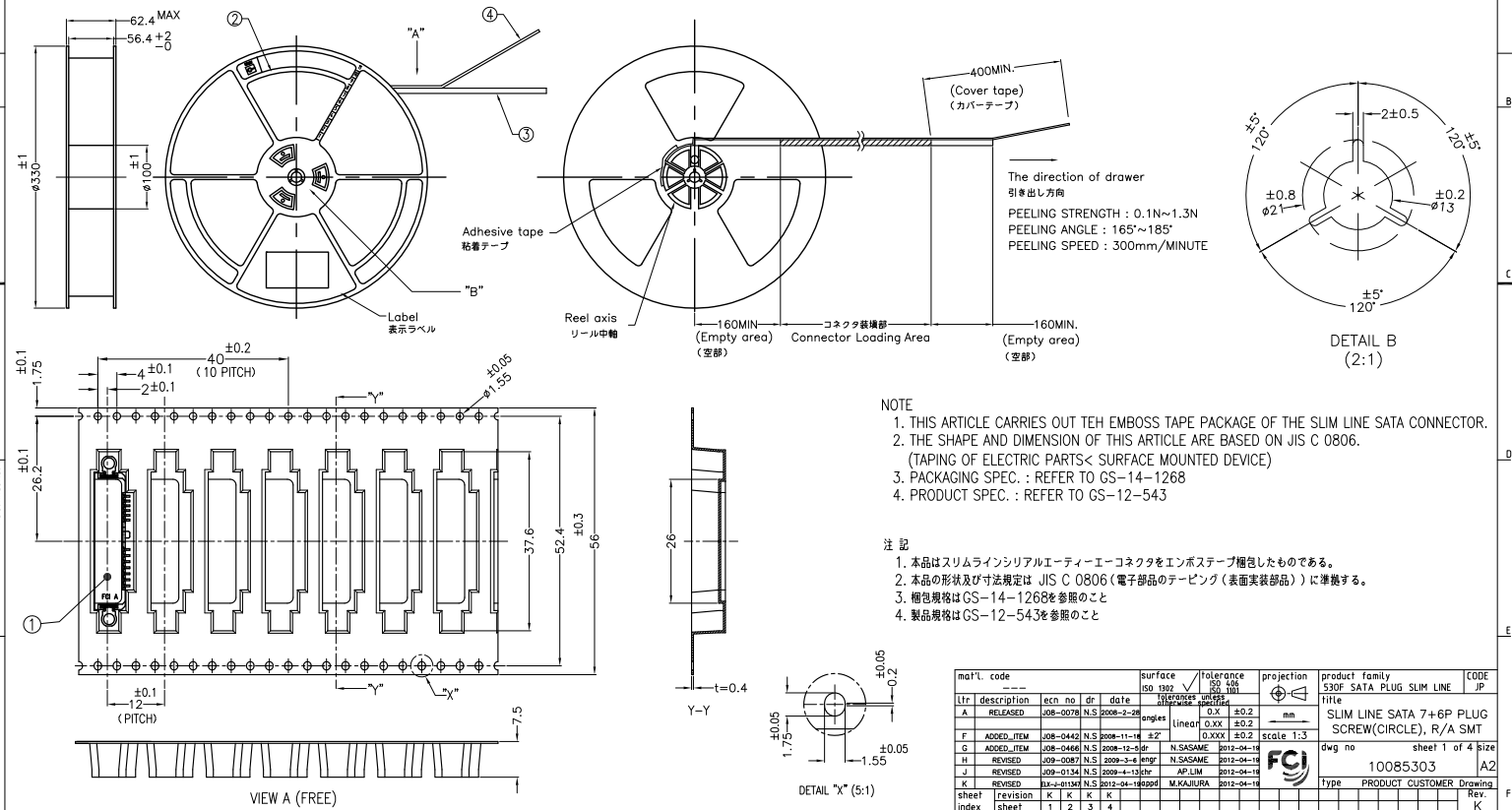


EMBOSS PACKAGE

| PRODUCT NO. | ① CONNECTOR | QTY |
|-------------------|-------------------|-----|
| 10085303-0001ELF | 10085303-0001ALF | 600 |
| 10085303-0010ELF | 10085303-0010ALF | 600 |
| 10085303-0101PELF | 10085303-0101PALF | 600 |
| 10085303-0110PELF | 10085303-0110PALF | 600 |
| 10085303-1101PELF | 10085303-1101PALF | 600 |
| 10085303-2010ELF | 10085303-2010ALF | 600 |
| 10085303-2110PELF | 10085303-2110PALF | 600 |
| 10085303-2101PELF | 10085303-2101PALF | 600 |
| 10085303-3001ELF | 10085303-3001ALF | 600 |
| 10085303-3101PELF | 10085303-3101PALF | 600 |

PARTS TABLE 部品表

| No. | PART NAME 部品名 | MATERIAL 材質 | QTY. | NOTE 備考 |
|-----|----------------------------------|-----------------------|------|---|
| ① | CONNECTOR コネクタ | SEE SHEET 2 | 600 | |
| ② | THE REEL FOR PACKAGING 巻取りリール | POLYSTYRENE ポリスチレン | 1 | Color : BLACK or BLUE, ELECTRIFICATION PREVENTION PROCESSING 色:黒または青、帯電防止処理品 |
| ③ | EMBOSS TAPE エンボステープ | PET | 1 | ELECTRIFICATION PREVENTION PROCESSING 帯電防止処理品 |
| ④ | COVER TAPE カバーテープ | POLYESTER ポリエステル | 1 | |

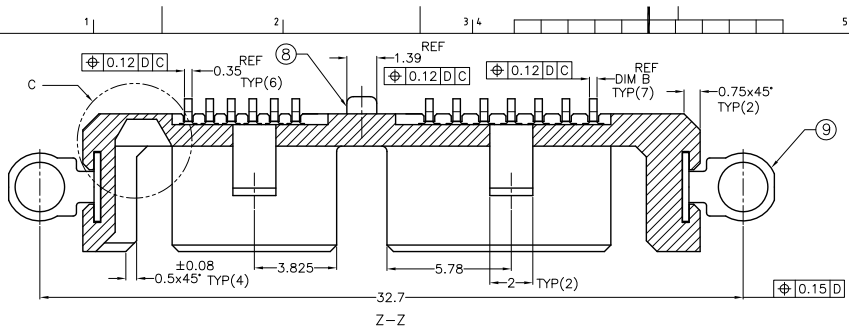


- NOTE
1. THIS ARTICLE CARRIES OUT THE EMBOSS TAPE PACKAGE OF THE SLIM LINE SATA CONNECTOR.
 2. THE SHAPE AND DIMENSION OF THIS ARTICLE ARE BASED ON JIS C 0806. (TAPING OF ELECTRIC PARTS< SURFACE MOUNTED DEVICE)
 3. PACKAGING SPEC. : REFER TO GS-14-1268
 4. PRODUCT SPEC. : REFER TO GS-12-543

- 注記
1. 本品はスリムラインシリアルイーサーイーコネクタをエンボステープ梱包したものである。
 2. 本品の形状及び寸法規定は JIS C 0806 (電子部品のテーピング (表面実装部品)) に準拠する。
 3. 梱包規格は GS-14-1268 を参照のこと
 4. 製品規格は GS-12-543 を参照のこと

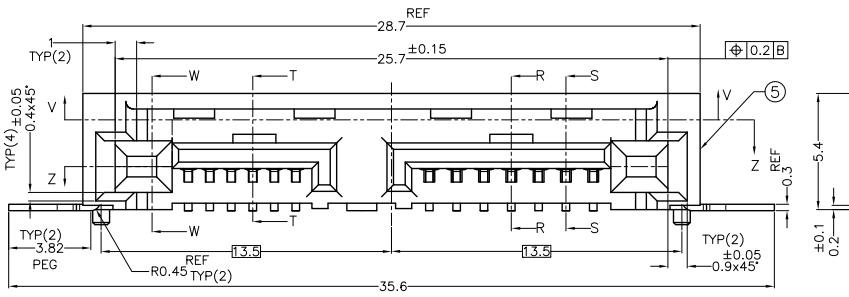
| mat'l. code | surface | tolerance | projection | product family | CODE |
|-----------------|----------|-----------|------------|--------------------------|--------------------------|
| --- | ISO 1302 | ISO 1501 | ISO 1501 | 330F SATA PLUG SLIM LINE | JP |
| lfr description | ecn no | dr date | tolerances | units | title |
| A RELEASED | 008-0078 | N.S | 2008-2-28 | 0.X ±0.2 | SLIM LINE SATA 7+6P PLUG |
| F ADDED_ITEM | 008-0442 | N.S | 2008-11-14 | ±2 | SCREW(CIRCLE), R/A SMT |
| G ADDED_ITEM | 008-0466 | N.S | 2008-12-04 | ±2 | |
| H REVISED | 009-0087 | N.S | 2009-3-6 | enpr | |
| J J REVISED | 009-0134 | N.S | 2009-4-13 | enpr | |
| K REVISED | 012-0134 | N.S | 2012-04-10 | enpr | |
| sheet index | revision | K | K | K | K |
| sheet | index | 1 | 2 | 3 | 4 |

CONNECTOR ASSY



PARTS TABLE 部品表

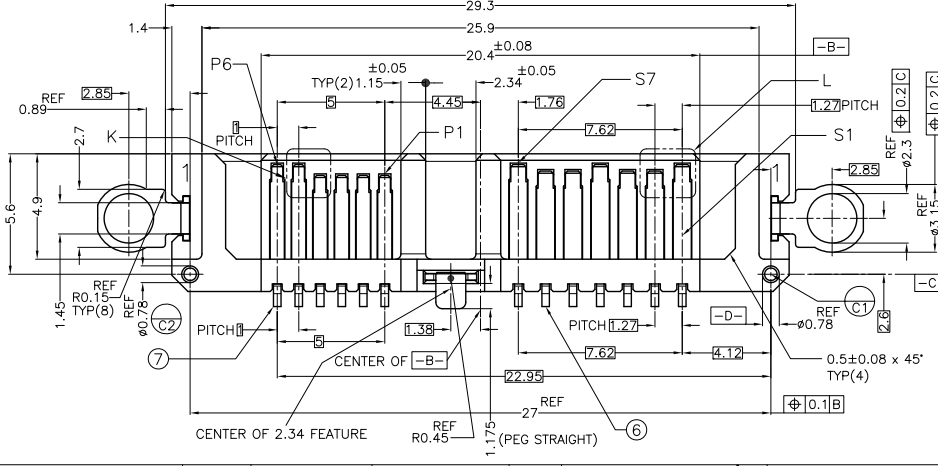
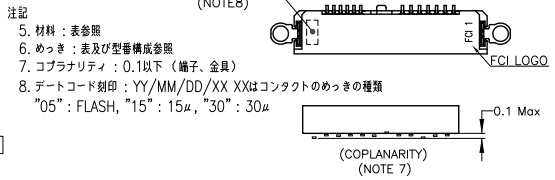
| No. | Part name 部品名 | QTY. | Note 備考 |
|-----|----------------------------------|------|---|
| ⑤ | HOUSING ハウジング | 1 | HIGH TEMP THERMOPLASTIC COLOR : BLACK , UL94V-0 |
| ⑥ | SIGNAL CONTACT シグナルコンタクト | 7 | COPPER ALLOY CONTACT AREA : Au SOLDERING AREA : Au or TIN |
| ⑦ | POWER CONTACT パワーコンタクト | 6 | COPPER ALLOY CONTACT AREA : Au SOLDERING AREA : Au or TIN |
| ⑧ | SOLDER PEG (CENTER) 溶剤金 (中央部) | 1 | COPPER ALLOY TIN PLATING |
| ⑨ | SOLDER PEG (L&R) 溶剤金 (左, 右) | 2 | COPPER ALLOY TIN PLATING |



<P/N composition> <P/N 構成>
10085303 - X X X X X L F

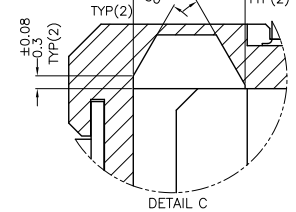
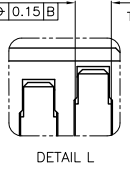
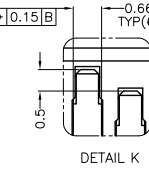
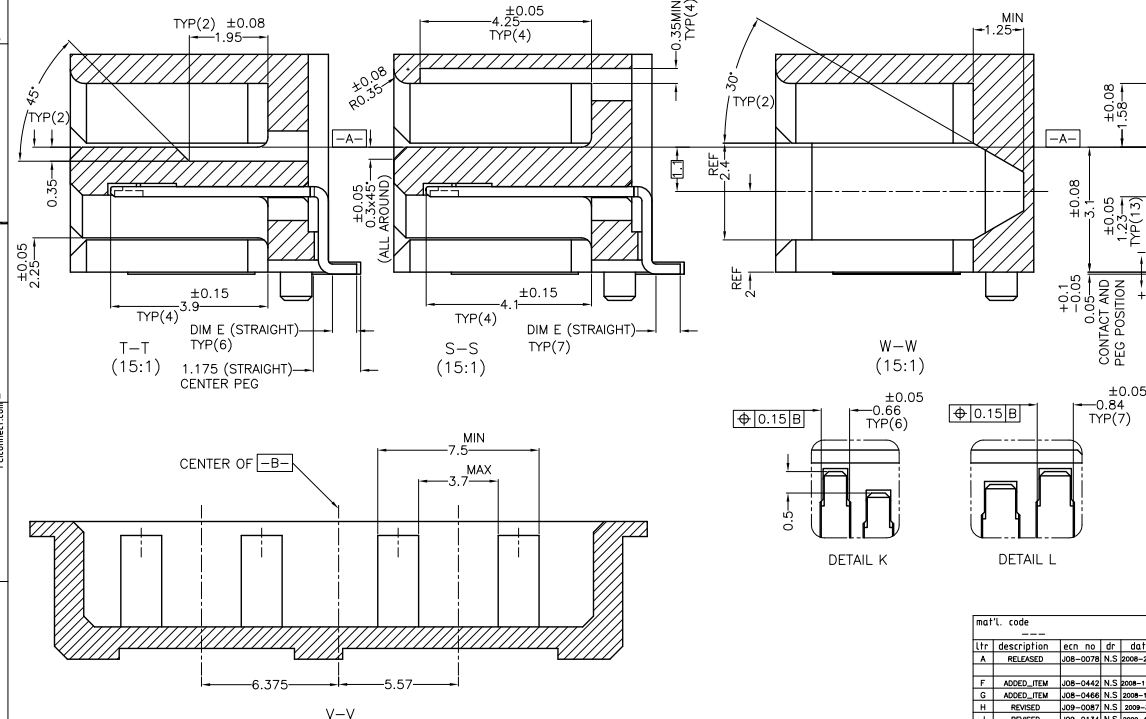
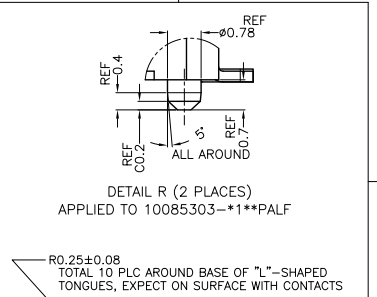
- LEAD-FREE
- PACKAGE SPEC
- E : TAPE AND REEL (EMBOSS ASSY)
- T : TRAY (TRAY ASSY)
- A : CONNECTOR ASSY (NOT PACKAGE)
- CONTACT TAIL LENGTH (DIM C)
- 0 : 1.0mm
- 1 : 0.7mm
- SIGNAL CONTACT TAIL WIDTH (DIM B)
- 0 : 0.35mm
- 1 : 0.40mm
- HSC BOSS LENGTH (DIM A)
- 0 : 1.0mm
- 1 : 0.7mm
- CONTACT PLATING (CONTACT AREA / SOLDERING AREA)
- 0 : GOLD FLASH (0.05 μ m) / TIN PLATING
- 1 : 0.38 μ m GOLD PLATING / TIN PLATING
- 2 : 0.76 μ m GOLD PLATING / TIN PLATING
- 3 : GOLD FLASH (0.05 μ m) / GOLD FLASH (0.05 μ m)
- 4 : 0.76 μ m GOLD PLATING / GOLD FLASH (0.05 μ m)

- NOTE
- MATERIAL : SEE TABLE
 - FINISH : SEE TABLE AND P/N COMPOSITION TABLE
 - COPLANARITY : 0.1 MAX. (CONTACT AND SOLDER PEG)
 - DATE CODE MARK : YY/MM/DD/XX XX IS USED TO MARK CONTACT PLATING SPEC.
"05" : FLASH, "15" : 15 μ , "30" : 30 μ



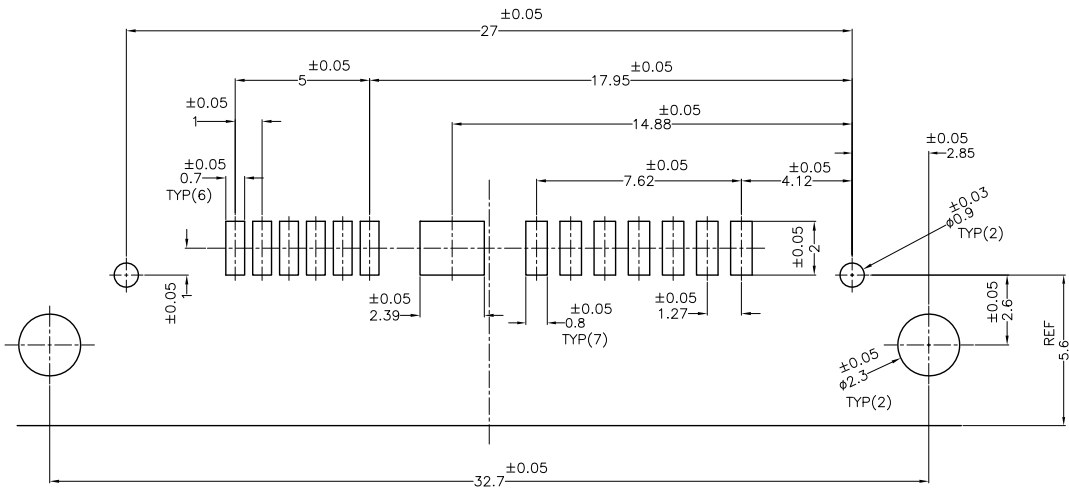
| mat'l. code | surface | tolerance | projection | product family | CODE |
|-----------------|------------|-----------|------------|--------------------------|-----------------------|
| --- | ISO 1562 | ISO 1562 | ISO 1562 | 530F SATA PLUG SLIM LINE | JP |
| lfr description | ecn no | dr | date | tolerances | units |
| A | RELEASED | 008-0078 | N.S | 2008-2-28 | 0.X \pm 0.2 |
| | | | | angles | linear 0.XX \pm 0.2 |
| F | ADDED_ITEM | 008-0442 | N.S | 2008-11-14 | \pm 2 |
| G | ADDED_ITEM | 008-0466 | N.S | 2008-12-04 | 0.XXX \pm 0.2 |
| H | REVISED | 009-0087 | N.S | 2009-3-6 | mpg |
| I | REVISED | 009-0134 | N.S | 2009-4-13 | APL |
| K | REVISED | 012-0134 | N.S | 2012-04-10 | MPG |
| sheet | revision | | | | |
| index | sheet | | | | |

| PRODUCT NO. | CONTACT AREA PLATING | SOLDERING AREA PLATING | HSG BOSS HEIGHT (DIM A) | TAIL WIDTH (DIM B) | TAIL LENGTH (DIM C) | TAIL LENGTH (DIM D) | TAIL LENGTH (DIM E) | TAIL LENGTH (DIM F) |
|-------------------|----------------------------|-----------------------------|-------------------------|--------------------|---------------------|---------------------|---------------------|---------------------|
| 10085303-0001ALF | GOLD FLASH 0.05um[2u"] MIN | 1.91um [75u"] MIN. 100% TIN | 1.0mm | 0.35mm | 0.7mm | 7.1mm | 0.6mm | 1.5mm |
| 10085303-0010ALF | GOLD FLASH 0.05um[2u"] MIN | 1.91um [75u"] MIN. 100% TIN | 1.0mm | 0.4mm | 1.0mm | 7.4mm | 0.9mm | 1.8mm |
| 10085303-0101PALF | GOLD FLASH 0.05um[2u"] MIN | 1.91um [75u"] MIN. 100% TIN | 0.7mm | 0.35mm | 0.7mm | 7.1mm | 0.6mm | 1.5mm |
| 10085303-0110PALF | GOLD FLASH 0.05um[2u"] MIN | 1.91um [75u"] MIN. 100% TIN | 0.7mm | 0.4mm | 1.0mm | 7.4mm | 0.9mm | 1.8mm |
| 10085303-1101PALF | GOLD 0.38um[15u"] MIN | 1.91um [75u"] MIN. 100% TIN | 0.7mm | 0.35mm | 0.7mm | 7.1mm | 0.6mm | 1.5mm |
| 10085303-2010ALF | GOLD 0.76um[30u"] MIN | 1.91um [75u"] MIN. 100% TIN | 1.0mm | 0.4mm | 1.0mm | 7.4mm | 0.9mm | 1.8mm |
| 10085303-2110PALF | GOLD 0.76um[30u"] MIN | 1.91um [75u"] MIN. 100% TIN | 0.7mm | 0.4mm | 1.0mm | 7.4mm | 0.9mm | 1.8mm |
| 10085303-2101PALF | GOLD 0.76um[30u"] MIN | 1.91um [75u"] MIN. 100% TIN | 0.7mm | 0.35mm | 0.7mm | 7.1mm | 0.6mm | 1.5mm |
| 10085303-3001ALF | GOLD FLASH 0.05um[2u"] MIN | GOLD FLASH 0.05um[2u"] MIN | 1.0mm | 0.35mm | 0.7mm | 7.1mm | 0.6mm | 1.5mm |
| 10085303-3101PALF | GOLD FLASH 0.05um[2u"] MIN | GOLD FLASH 0.05um[2u"] MIN | 0.7mm | 0.35mm | 0.7mm | 7.1mm | 0.6mm | 1.5mm |



| mat'l. code | surface | tolerance | projection | product family | CODE |
|-----------------|---------------------------|-----------------|------------|---|-------------------------------|
| --- | ISO 192 | ISO 192 | mm | 530F SATA PLUG SLIM LINE | JP |
| lfr description | ecn no dr date | tolerances | units | title | |
| A RELEASED | job-0078 N.S 2008-2-28 | linear 0.X ±0.2 | mm | SLIM LINE SATA 7+6P PLUG SCREW(CIRCLE), R/A SMT | |
| F ADDED_ITEM | job-0442 N.S 2008-11-14 | ±2 | 0.XXX ±0.2 | scale 16:1 | dwg no sheet 3 of 4 size |
| G ADDED_ITEM | job-0466 N.S 2008-12-8 dr | N.SASAME | 2012-04-16 | 10085303 | A2 |
| H REVISED | job-0087 N.S 2009-3-6 | engr | N.SASAME | 2012-04-16 | Rev. |
| J REVISED | job-0134 N.S 2009-4-13 | dr | APL LIM | 2012-04-16 | Type PRODUCT CUSTOMER Drawing |
| K REVISED | job-0134 N.S 2012-04-16 | dr | M.KAJIURA | 2012-04-16 | Rev. K |
| sheet index | revision sheet | | | | |

CONNECTOR ASSY



RECOMMENDED PCB PATTERN LAYOUT

| mat'l. code | --- | surface | ISO 1327 | tolerance | ISO 1327 | projection | product family | CODE |
|-------------|-------------|----------|----------|------------|------------|------------|--------------------------|------------------|
| lfr | description | ecn no | dr | date | tolerances | units | 530F SATA PLUG SLIM LINE | JP |
| A | RELEASED | 108-0078 | N.S | 2008-2-28 | 0.X | ±0.2 | SLIM LINE SATA 7+6P PLUG | |
| F | ADDED_ITEM | 108-0442 | N.S | 2008-11-14 | linear | ±0.2 | SCREW(CIRCLE), R/A SMT | |
| G | ADDED_ITEM | 108-0466 | N.S | 2008-12-8 | ±2° | ±0.2 | scale 10:1 | |
| H | REVISED | 109-0087 | N.S | 2009-3-6 | mm | | 10085303 | A2 |
| J | REVISED | 109-0134 | N.S | 2009-4-13 | APLIM | | sheet 4 of 4 | size |
| K | REVISED | 112-0134 | N.S | 2012-04-18 | M.KAJIURA | | Type | PRODUCT CUSTOMER |
| sheet | revision | | | | | | Rev. | |
| index | sheet | | | | | | | K |

PDS: Rev. :K

STATUS:Released

Printed: Apr 19, 2012