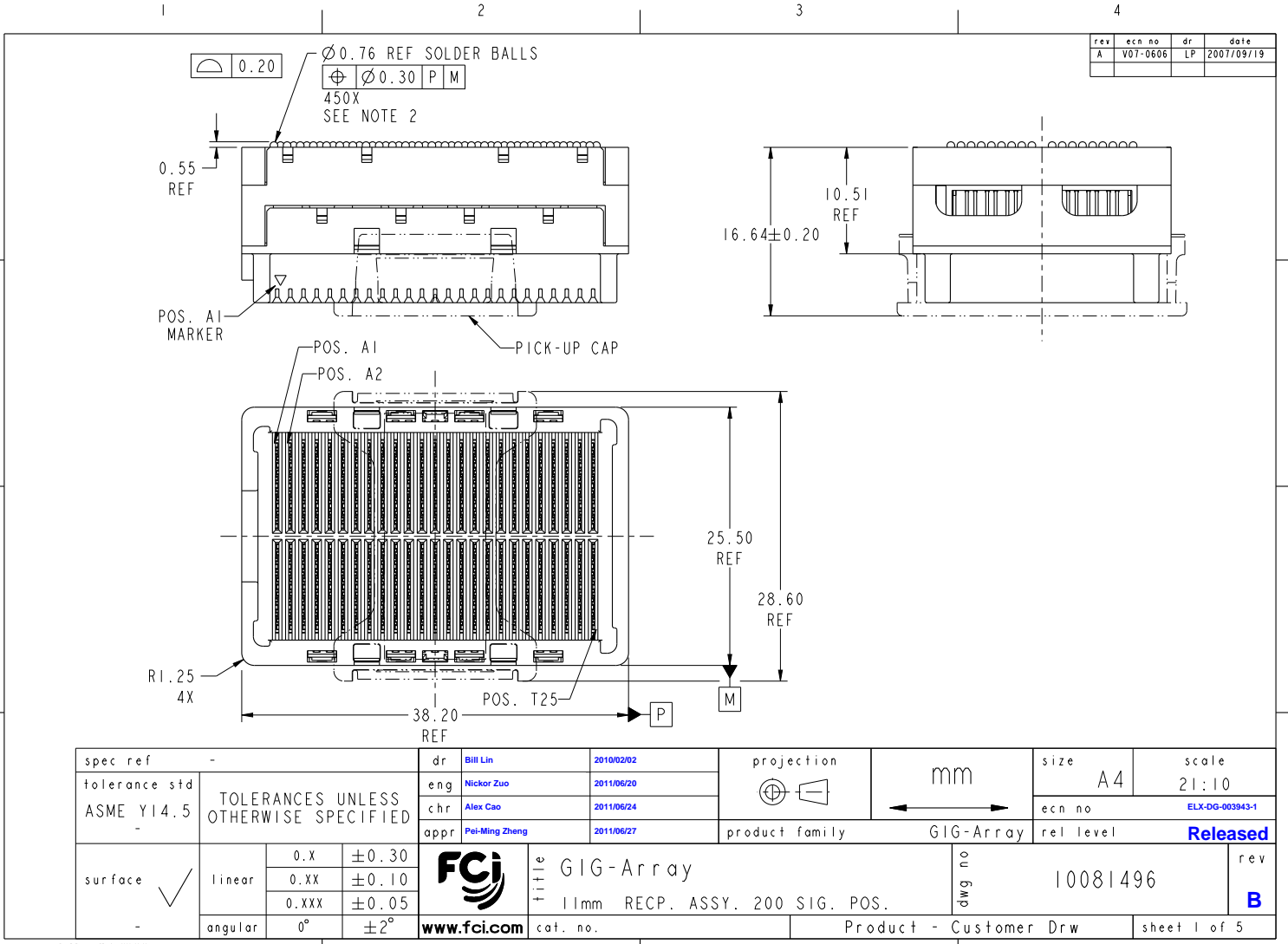




Copyright FCI.



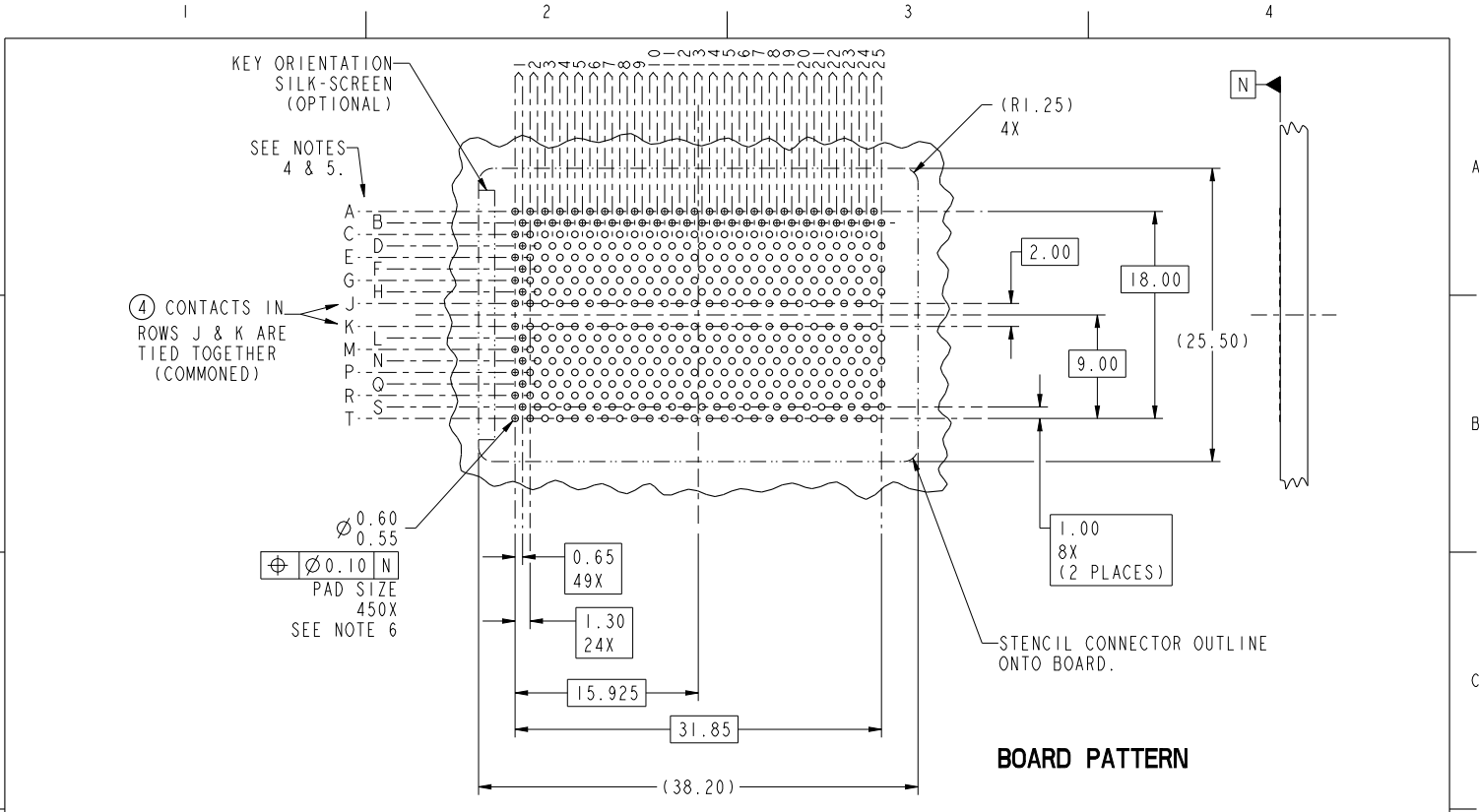
| rev | ecn no | dr | date |
|-----|----------|----|------------|
| A | V07-0606 | LP | 2007/09/19 |

| | | | | | | | | | | |
|---------------------------------------|------------|-------|------------|------------|-------------|---|------------------------|--------------------|----------|--------------|
| spec ref | - | dr | Bill Lin | 2010/02/02 | projection | mm | size | A4 | scale | 21:10 |
| tolerance std | ASME Y14.5 | eng | Nickor Zuo | 2011/06/20 | | | ecn no | ELX-DG-003943-1 | | |
| TOLERANCES UNLESS OTHERWISE SPECIFIED | | chr | Alex Cao | 2011/06/24 | | | product family | GIG-Array | | rel level |
| surface | linear | 0.x | ±0.30 | | GIG-Array | | | dwg no 10081496 | rev B | |
| - | angular | 0.xx | ±0.10 | | www.fci.com | GIG-Array 11mm RECP. ASSY. 200 SIG. POS. | | | | |
| | | 0.xxx | ±0.05 | | | cat. no. | Product - Customer Drw | | | sheet 1 of 5 |
| | | 0° | ±2° | | | | | | | |

PAGE FILE - REV C - 2010-06-09

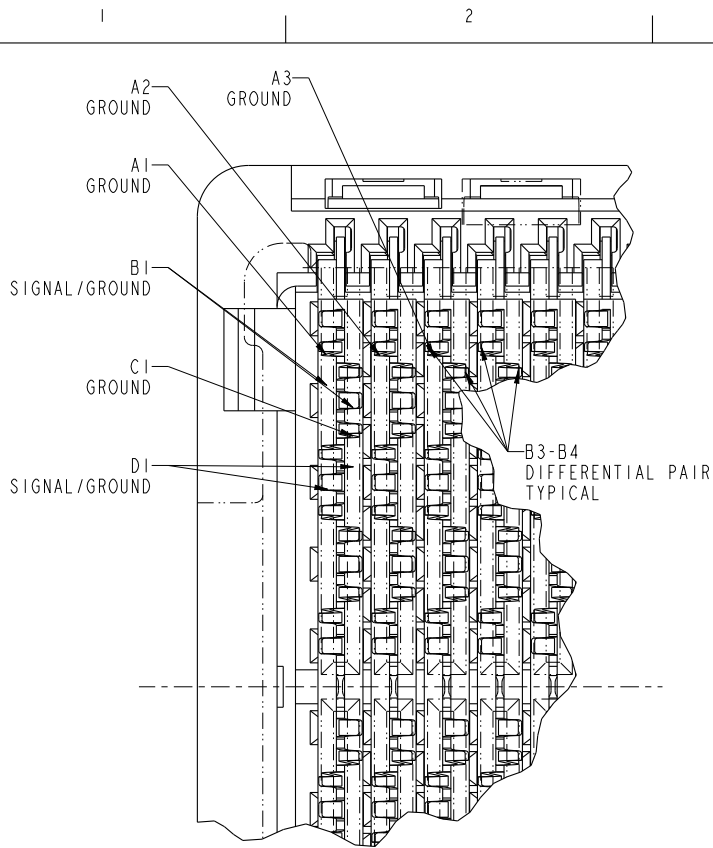


Copyright FCI.



| | | | | | | | | | | | |
|---------------------------------------|------------|-------------|----------------|--------------------------------|------------|------------------------|----------------|--------------|-----------------|-------|-----------|
| spec ref | - | dr | Bill Lin | 2010/02/02 | projection | mm | size | A4 | scale | 21:10 | |
| tolerance std | ASME Y14.5 | eng | Nickor Zuo | 2011/06/20 | | | ecn no | | ELX-DG-003943-1 | | |
| TOLERANCES UNLESS OTHERWISE SPECIFIED | | chr | Alex Cao | 2011/06/24 | | | product family | | GIG-Array | | rel level |
| surface | ✓ | appr | Pei-Ming Zheng | 2011/06/27 | GIG-Array | | rel level | | Released | | |
| | linear | | | GIG-Array | | dwg no | | 10081496 | | rev | B |
| | angular | www.fci.com | | 11mm RECP. ASSY. 200 SIG. POS. | | Product - Customer Drw | | sheet 2 of 5 | | | |
| | | | | | | | | | | | |

PAGE FILE - REV C - 2010-06-09



RECEPTACLE INTERFACE DESCRIPTION

| | | | | | | | | | | | | |
|---------------------------------------|------------|--------|-------|-------------|------------|----------------|-----------------------|----------------|-----------------|------------------------|--------------|---|
| spec ref | - | | | dr | Bill Lin | 2010/02/02 | projection mm ⊕ | size | A4 | scale | 21:10 | |
| tolerance std | ASME Y14.5 | | | eng | Nickor Zuo | 2011/06/20 | | ecn no | ELX-DG-003943-1 | | | |
| TOLERANCES UNLESS OTHERWISE SPECIFIED | | | | chr | Alex Cao | 2011/06/24 | | rel level | Released | | | |
| surface | ✓ | linear | 0.X | ±0.30 | appr | Pei-Ming Zheng | 2011/06/27 | product family | GIG-Array | | rev | |
| - | | 0.XX | ±0.10 | www.fci.com | title | GIG-Array | dwg no | 10081496 | cat. no. | Product - Customer Drw | sheet 3 of 5 | B |
| | | 0.XXX | ±0.05 | | | | | | | | | |
| | angular | 0° | ±2° | | | | | | | | | |

PAGE FILE - REV C - 2010-06-09

PDS: Rev :B

STATUS:Released

Printed: Jun 27, 2011



Copyright FCI.

| PRODUCT NUMBER | SOLDER BALL COMPOSITION | CONTACT PLATING PERFORMANCE LEVEL |
|----------------|-------------------------|--|
| 10081496-001 | STANDARD (EUTECTIC) | PERFORMANCE-BASED PLATING, QUALIFIED TO MEET THE REQUIREMENTS OF FCI PRODUCT SPECIFICATION GS-12-192, INCLUDING TELCORDIA CENTRAL OFFICE Au over Ni |
| 10081496-001LF | LEADFREE | |
| 10081496-201 | STANDARD (EUTECTIC) | |
| 10081496-201LF | LEADFREE | |

NOTES:

- ① MATERIAL:
HOUSING: LCP
CONTACT: COPPER ALLOY
PLATING (CONTACT): Au OVER Ni.
UL RATING: 94 V-0
SOLDER BALL: (SEE TABLE) EUTECTIC
SnPb OR LEAD FREE 95.5 Sn/4Ag/0.5Cu.
- ② SOLDER BALLS WILL NOT BE PERFECT SPHERICAL SHAPE DUE TO REFLOW ATTACHMENT.
- ③ MATED HEIGHT EFFECTED BY CUSTOMERS' PCB PAD SIZE, PLATING, SOLDER REFLOW PROFILE & SOLDER PASTE.
- ④ CONTACTS IN ROWS A,C,E,G,J,K,M,P,R AND T ARE SINGLE BEAM CONTACTS, USED AS GROUND PINS.
(NOTE: CONTACTS IN ROWS J & K ARE TIED TOGETHER (COMMONED))
- ⑤ CONTACTS IN ROWS B,D,F,H,L,N,Q AND S ARE DUAL BEAM CONTACTS, TYPICALLY USED AS SIGNAL PINS.

NOTES:

- ⑥ SPECIFIED POSITIONAL TOLERANCE DEFINES PAD TO PAD LOCATION WITHIN LAND PATTERN. POSITIONAL TOLERANCE OF LAND PATTERN TO FUDICIAL MARKS OR PCB DATUMS SHALL BE DEFINED BY CUSTOMER. FOR RECOMMENDED PRODUCT APPLICATION AND PCB DESIGN DETAILS, SEE DOC. NO. GS-20-016.
- ⑦ FOR PROPER APPLICATION FOLLOW FCI APPLICATION SPECIFICATION GS-20-033. LEAD FREE SOLDER BALLS WILL NOT SOLDER PROPERLY IN A LEADED SOLDER PROCESS DUE TO A HIGHER REFLOW TEMPERATURE. LEADFREE PRODUCT IS THEREFORE NOT BACKWARDS COMPATIBLE WITH LEADED OR SOME SOLDERING APPLICATIONS. REFERENCE FCI APPLICATION SPECIFICATION.
- ⑧ THIS PRODUCT MEETS THE EUROPEAN UNION DIRECTIVES AND OTHER COUNTRY REGULATIONS AS DESCRIBED IN GS-22-008. PRODUCT MEETING THIS DIRECTIVE IS IDENTIFIED IN THE CODE NUMBER MARKED ON EACH PART BY HAVING AN "X" IN THE SEVENTH CHARACTER POSITION.

| | | | | | | | | | | | | | |
|---------------------------------------|------------|-------------|----------------|------------|------------------------|----|--------------|-----------------|-----------|-----------|-----------|----------|-----|
| spec ref | - | dr | Bill Lin | 2010/02/02 | projection | | size | A4 | scale | 21:10 | | | |
| tolerance std | ASME Y14.5 | eng | Nickor Zuo | 2011/06/20 | | mm | ecn no | ELX-DG-003943-1 | | | | | |
| TOLERANCES UNLESS OTHERWISE SPECIFIED | | chr | Alex Cao | 2011/06/24 | | | | product family | GIG-Array | rel level | Released | | |
| surface | linear | appr | Pei-Ming Zheng | 2011/06/27 | | | | | | | GIG-Array | 10081496 | rev |
| | angular | www.fci.com | | cat. no. | Product - Customer Drw | | sheet 5 of 5 | | | | | | |
| | | | | | | | | | | | | | |

PAGE FILE - REV C - 2010-06-09

PDS: Rev :B

STATUS:Released

Printed: Jun 27, 2011

Copyright FCI.