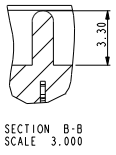
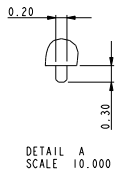
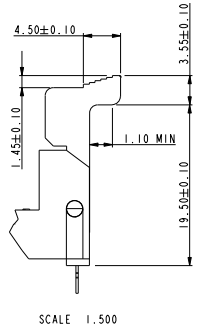
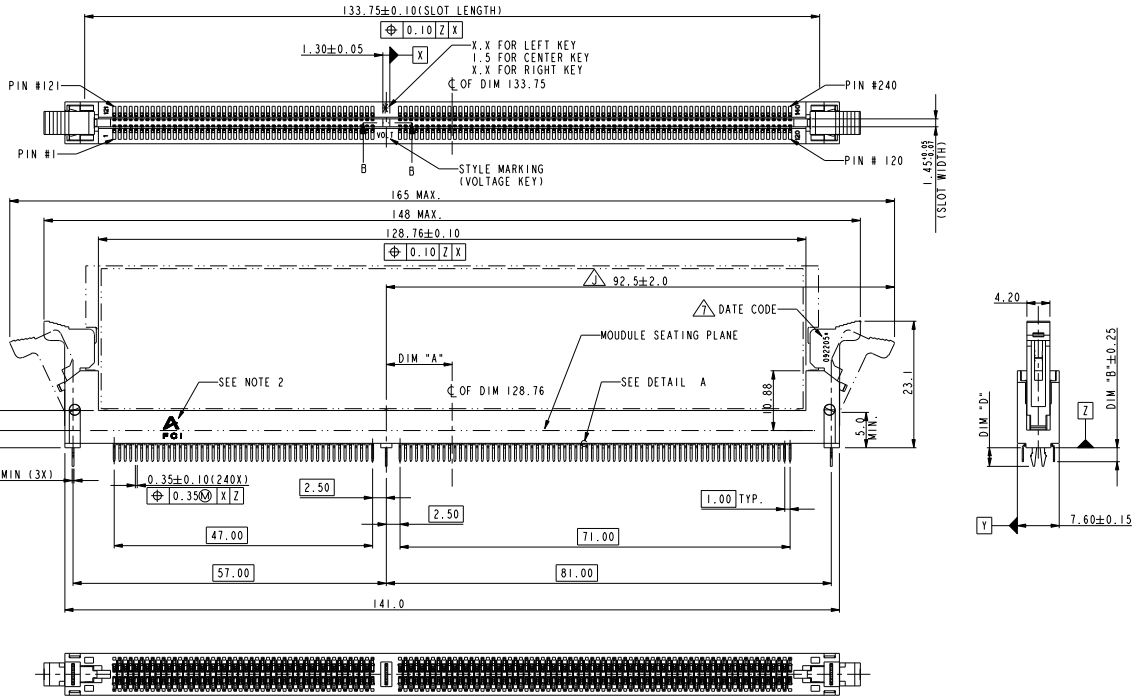


PART NO.	DIM "A"	DESCRIPTION
10068597-1****	12.00	I .5V
10068597-2****	11.00	X.XV
10068597-3****	13.00	X.XV



REV	ECN NO.	DR	DATE
H	DG08-0359	B L	12/25/08
J	DG09-0174	B L	06/01/08
N	DG09-0369	B L	11/25/09
F	DG08-0065	J W	03/19/08
G	DG08-0172	B L	07/23/08

www.fciconnect.com		surface	tolerance std	projection	MM
Dr CHARLIE S 04/06/06		TOLERANCES UNLESS OTHERWISE SPECIFIED		size A4	Scale 0.500
Eng CAHRLIE S 04/06/06	Chr BEER FU 04/06/06	ANGULAR	LINEAR	0.X ±.38	0.XX ±.25
Appr JOSEPH HSIA 04/06/06	Product family	0° ± 2°		0.XXX ±.13	ECN DG09-0369
FCJ		Title		Spec ref	
DDR11 240P V/T METAL CLIP ASS'Y		catalog no		10068597	
				CUSTOMER	
				sheet 1 of 4	



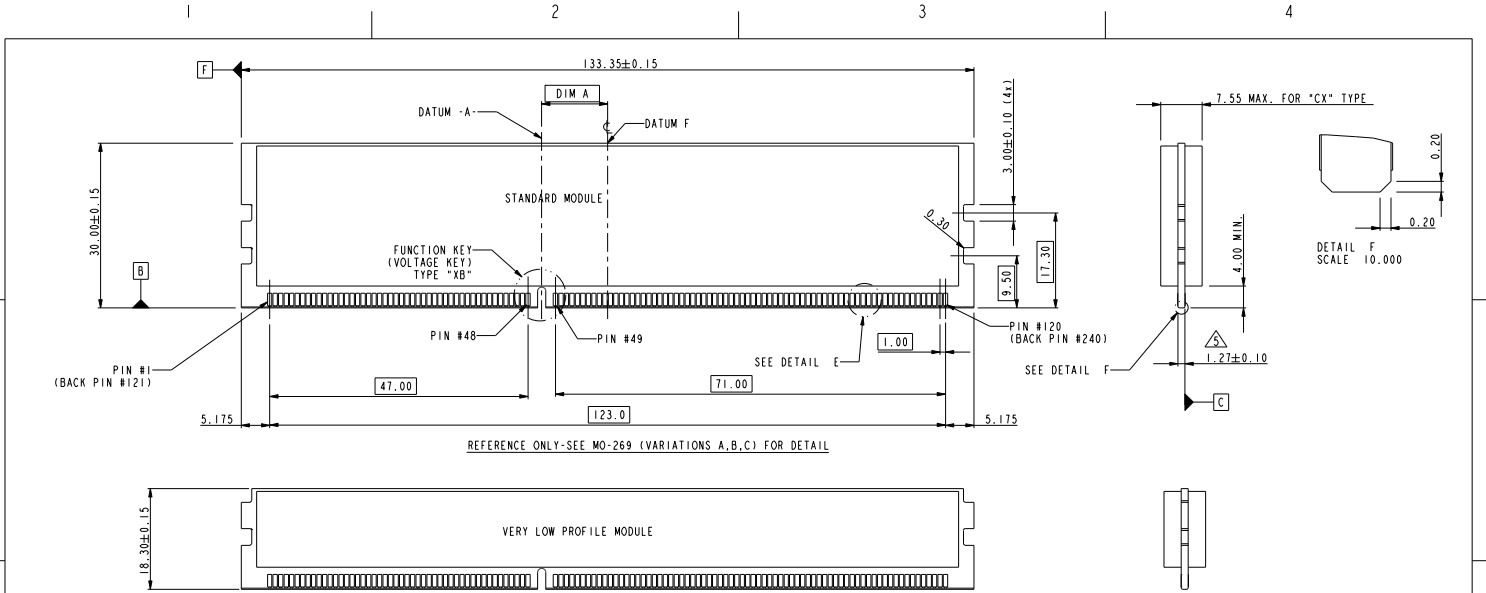
Copyright FCI.

REV 1 - 2004-06-17

PDM: Rev:K STATUS:Released 4 Printed: Dec 19, 2009

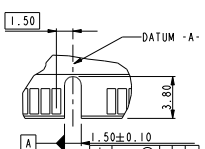
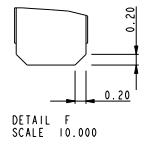


Copyright FCI.

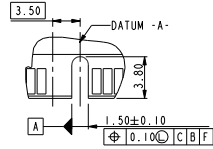


REFERENCE ONLY-SEE MO-269 (VARIATIONS A,B,C) FOR DETAIL

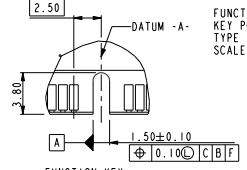
REFERENCE ONLY-SEE MO-269 (VARIATIONS D,E,F) FOR DETAIL



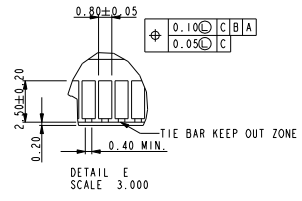
FUNCTION KEY KEY POSITION LEFT TYPE "XA" SCALE 2.000



FUNCTION KEY KEY POSITION RIGHT TYPE "XC" SCALE 2.000



FUNCTION KEY KEY POSITION CENTER TYPE "XB" SCALE 2.000



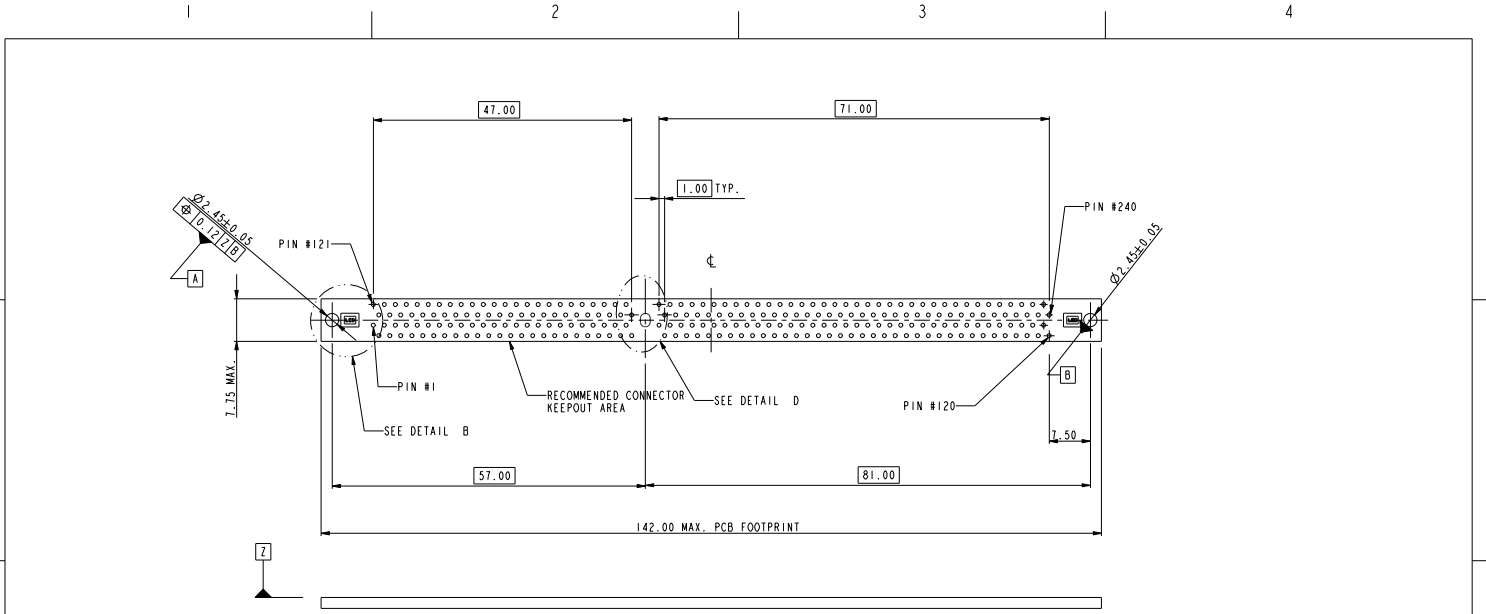
TYPE "XA"	X.X VOLTAGE
TYPE "XC"	X.X VOLTAGE
TYPE "XB"	1.5 VOLTAGE
SUB KEY POS #1	DESCRIPTION

tolerance unless otherwise specified	
linear	.X ± .38
	.XX ± .25
	.XXX ± .13
angles	0° ± 2°

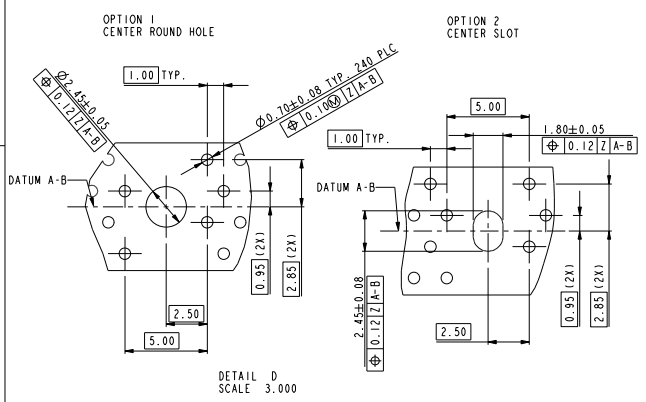
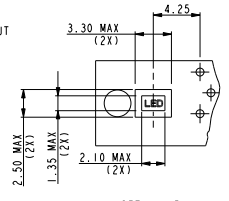
	TITLE	DDR11 240P V/T METAL CLIP ASS'Y	DRG NO	10068597	Rev.	K
	CATALOG NO		CUSTOMER		SHEET	2 of 4



Copyright FCJ.



RECOMMENDED CIRCUIT BOARD HOLE LAYOUT



tolerance unless otherwise specified	
linear	.X ± .38
	.XX ± .25
	.XXX ± .13
angles	0° ± 2°

	TITLE	DDR111 240P V/T METAL CLIP ASS'Y	dwg no	10068597	Rev.	K
	CATALOG NO		CUSTOMER		SHEET	3 of 4

REV 1 - 2004-04-17



Copyright FCI.

REV 1 - 2004-04-17

10068597 - □ □ □ □

STYLE : MECHANICAL KEYING

1 : 1.5 VOLT. W/ CENTER KEY "XB"
 2 : X.X VOLT. W/ LEFT KEY "XA"
 3 : X.X VOLT. W/ RIGHT KEY "XC"

CODE	METAL CLIP		TAIL LENGTH	
	DIM "D"	DIM "B"	DIM "D"	DIM "B"
11	3.05	2.67		
22	3.56	3.18		

PLATING

CODE	CONTACT	SOLDERTAIL	UNDERPLATE
2	15u" (0.38um) MIN. GOLD		
3	30u" (0.76um) MIN. GOLD	100u" (2.54um) MIN. TIN/LEAD	50u" (1.27um) MIN. NICKEL OVERALL
4	3u" (0.07um) MIN. GOLD		
SLF	20u" (0.508um) MIN. GOLD		90u" (2.29um)MIN. NICKEL OVERALL
TLF	15u" (0.38um) MIN. GOLD	100u" (2.54um) MIN. 100% TIN	50u" (1.27um) MIN. NICKEL OVERALL
8LF	30u" (0.76um) MIN. GOLD		
9LF	3u" (0.07um) MIN. GOLD		

COLOR OF HOUSING AND EJECTOR

- 0 : BLACK HOUSING + IVORY EJECTOR
- 1 : BLUE HOUSING + IVORY EJECTOR
- 2 : BLACK HOUSING + BLACK EJECTOR
- 3 : BLACK HOUSING + CLEAR EJECTOR
- 4 : BLUE HOUSING + CLEAR EJECTOR
- 5 : IVORY HOUSING + CLEAR EJECTOR
- 6 : BLACK HOUSING + BLUE (2945C) EJECTOR
- 7 : IVORY HOUSING + IVORY EJECTOR
- 8 : BLACK HOUSING + GREEN (375C) EJECTOR
- 9 : IVORY HOUSING + BLACK EJECTOR
- △ C : BLUE HOUSING + BLACK EJECTOR

- NOTES:
1. MATERIAL:
 HOUSING: HIGH PERFORMANCE RESINS, GLASS FILLED UL94V-0 RATED.
 EJECTOR: HIGH PERFORMANCE RESINS, GLASS FILLED UL94V-0 RATED.
 TERMINAL: COPPER ALLOY.
 METAL CLIP: COPPER ALLOY.
 2. FCI LOGO TO BE APPROXIMATELY LOCATED AS SHOWN ON PRINT.
 3. PRODUCT SPECIFICATION: GS-12-368.
 4. PACKAGING SPECIFICATION: GS-14-899.
 - △ CARD THICKNESS APPLIES ACROSS TABS AND INCLUDES PLATING AND/OR METALIZATION.
 - △ LEADING EDGE OF CONTACT PADS SPECIFIED BY THE KEEP OUT ZONE SHALL BE FREE OF BURRS AND EXTERNAL TIE BARS. FOR OPTIMUM PERFORMANCE, THE TIE BAR IS TO BE ON AN INTERNAL LAYER SO THAT THE REMNANT CANNOT CAUSE CONTACT DAMAGE.
 - △ THE DATE CODE IS SHOWN "MMDDYY*"; "*" MEANS PRODUCTION LINE CODE.
 8. SOCKET IS COMPLIANT TO JEDEC SO-007 AND ACCEPTS JEDEC MODULE MO-269, VARIATIONS AA THRU FC.
 9. THIS PRODUCT MEETS EUROPEAN UNION DIRECTIVES AND OTHER COUNTRY REGULATIONS AS DESCRIBED IN GS-22-008.
 10. THE HOUSING WILL WITH STAND EXPOSURE TO 260°C PEAK TEMPERATURE FOR 10 SECONDS IN A WAVE SOLDER APPLICATION.
 11. THE CLEAR LATCH CAN WITHSTAND MAX 174°C EXPOSURE TEMPERATURE.

tolerance unless otherwise specified	
linear	.X ± .38 .XX ± .25 .XXX ± .13
angles	0° ± 2°

	title	DDR111 240P V/T METAL CLIP ASS'Y	drg no	10068597	Rev. K
	catalog no	-			