

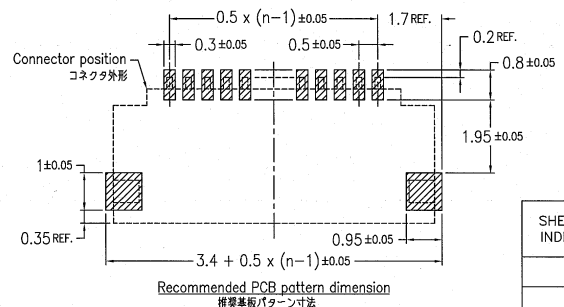
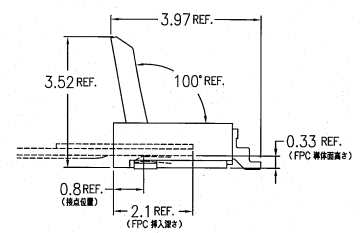
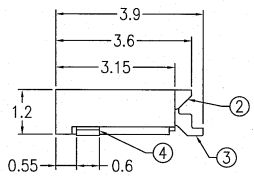
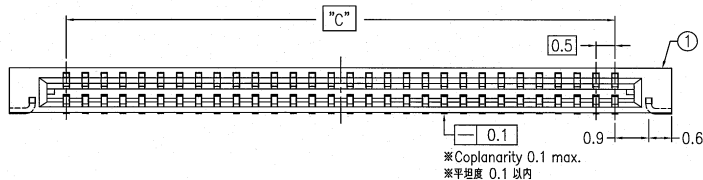
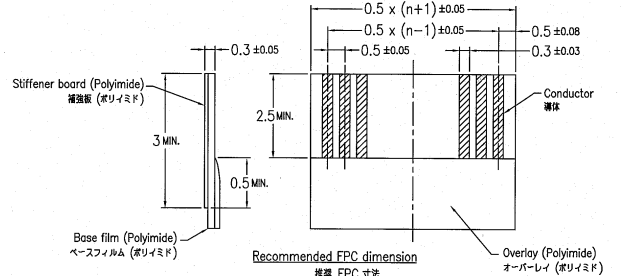
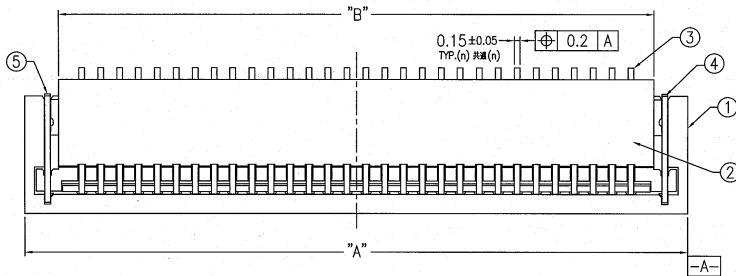
PRODUCT NO.

CONNECTOR ASSY

10042867-__11__

REVISIONS

REV	DESCRIPTION	ECN	BY	DATE
A	RELEASED	J04-0452	N.S	12/8/04
B	REVISED	J05-0005	N.S	1/7/05
C	REVISED	J05-0188	N.S	4/12/05



Note
 1. "n" shows the number of contacts.
 2. This product meets European Union Directives and other country regulations as described in GS-22-008

注記
 1. n は極数を示す。
 2. 本製品は、GS-22-008に記載されたヨーロッパ諸国指令と他国の規制に適合しています。



SHEET INDEX	ISSUE SH NO.	C 1	C 2	C 3																	
TOLERANCES UNLESS OTHERWISE SPECIFIED		±0.3		MAT SEE TABLE (SHEET 2) シート2表参照		DR <i>N. Sasame</i>	DATE 4/12/05	CUSTOMER COPY		TITLE 0.5mm pitch connector for FPC (VLH)											
LINEAR				FINISH SEE TABLE (SHEET 2) シート2表参照		ENGR <i>N. Sasame</i>	DATE 4/12/05	THIRD ANGLE PROJ.		PRODUCT FAMILY 58GF FLEX 0.5		SCALE 10/1		SIZE B		DWG. NO. 10042867		REV C		SHEET 1 of 3	
ANGLES		±2°		APPD <i>M. Maeda</i>		DATE 4/14/05	UNIT MM 寸法														

DO NOT SCALE PRINT THIS INFORMATION IS CONFIDENTIAL AND IS DISCLOSED TO YOU ON CONDITION THAT NO FURTHER DISCLOSURE IS MADE BY YOU TO OTHER THAN FCI PERSONNEL WITHOUT WRITTEN AUTHORIZATION FROM FCI JAPAN K.K.

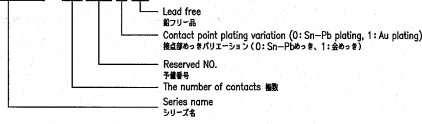
PRODUCT NO.
10042867-__11__

CONNECTOR ASSY

REVISIONS				
REV	DESCRIPTION	ECN	BY	DATE
A	RELEASED	J04-0452	N.S	12/8/04
B	REVISED	J05-0005	N.S	1/7/05
C	REVISED	J05-0188	N.S	4/12/05

<P/N composition> <P/N 構成>

10042867- 60 N B 1 LF



PARTS TABLE 部品表

No.	Part name 部品名	Material 材質	Finish めっき	Note 備考
①	Housing ハウジング	Enter glass fiber LCP resin ガラス繊維入り LCP 樹脂	—	色:黒色, UL94V-0 Color: Natural, UL94V-0
②	Actuator アクチュエーター	Enter glass fiber LCP resin ガラス繊維入り LCP 樹脂	—	色:黒, UL94V-0 Color: Black, UL94V-0
③	Contact コンタクト	Phosphor bronze りん青銅	Sn-Pb plating or Au plating (Nickel underplating) はんだめっきまたは金めっき(ニッケル下鍍め)	ニッケル下鍍め With Ni dam on the contact
④	Fitting nail (Right side) 挿入金 (右側)	Phosphor bronze りん青銅	Tin alloy plating (Nickel underplating) スズ合金めっき(ニッケル下鍍め)	—
⑤	Fitting nail (Left side) 挿入金 (左側)	Phosphor bronze りん青銅	Tin alloy plating (Nickel underplating) スズ合金めっき(ニッケル下鍍め)	—

Au	YES	29.5	30.72	32.5	1	1	60	1	1	↑	-60NB1LF
	YES	28.0	29.22	31.0	1	1	57	1	1		-57NB1LF
	YES	24.5	25.72	27.5	1	1	50	1	1		-50NB1LF
	YES	22.0	23.22	25.0	1	1	45	1	1		-45NB1LF
	PRELIMINARY	19.5	20.72	22.5	1	1	40	1	1		10042867-40NB1LF
Sn-Pb	YES	29.5	30.72	32.5	1	1	60	1	1	↑	-60NB0
	YES	28.0	29.22	31.0	1	1	57	1	1		-57NB0
	YES	24.5	25.72	27.5	1	1	50	1	1		-50NB0
	YES	22.0	23.22	25.0	1	1	45	1	1		10042867-45NB0
CONTACT PLATING	TOOLING AVAILABLE	DIM "C"	DIM "B"	DIM "A"	⑤ FITTING NAIL(L) QTY	④ FITTING NAIL(R) QTY	③ CONTACT QTY	② ACTUATOR QTY	① HOUSING QTY		PRODUCT NO.

SHEET INDEX	ISSUE SH NO.	TOLERANCES UNLESS OTHERWISE SPECIFIED	MAT SEE TABLE (SHEET 2)	DR	DATE	CUSTOMER COPY	TITLE
		±0.3	シート2 表参照	N. Sasame	4/12/05		0.5mm pitch connector for FPC (VLH)
LINEAR			シート2 表参照	N. Sasame	4/12/05		PRODUCT FAMILY 58GF FLEX 0.5
ANGLES	±2°		シート2 表参照	CHK	4/12/05		SCALE 10/1
				APPD	4/14/05		SIZE B
							DWG. NO. 10042867
							REV C
							SHEET 2 of 3

DO NOT SCALE PRINT THIS INFORMATION IS CONFIDENTIAL AND IS DISCLOSED TO YOU ON CONDITION THAT NO FURTHER DISCLOSURE IS MADE BY YOU TO OTHER THAN FCI PERSONNEL WITHOUT WRITTEN AUTHORIZATION FROM FCI JAPAN K.K.



PRODUCT NO.	DIM "A"	DIM "B"	DIM "C"	DIM "D"	CONTACT PLATING	Emboss QTY. (Emboss PITCH)	TOOLING AVAILABLE	PRODUCT NO.	DIM "A"	DIM "B"	DIM "C"	DIM "D"	CONTACT PLATING	Emboss QTY. (Emboss PITCH)	TOOLING AVAILABLE
10042867-45NB00E	44	20.2	49.5	8	Sn-Pb	4500 +45/-0 (8mm)	YES	10042867-45NB05E	44	20.2	49.5	12	Sn-Pb	3000 +45/-0 (12mm)	YES
YES							10042867-50NB05E	YES							
YES							10042867-57NB05E	PRELIMINARY							
YES							10042867-60NB05E	YES							
10042867-40NB10ELF	44	20.2	49.5	8	Au	4500 +45/-0 (8mm)	PRELIMINARY	10042867-40NB15ELF	44	20.2	49.5	12	Au	3000 +45/-0 (12mm)	PRELIMINARY
YES							10042867-45NB15ELF	YES							
YES							10042867-50NB15ELF	YES							
YES							10042867-57NB15ELF	PRELIMINARY							
YES							10042867-60NB15ELF	YES							

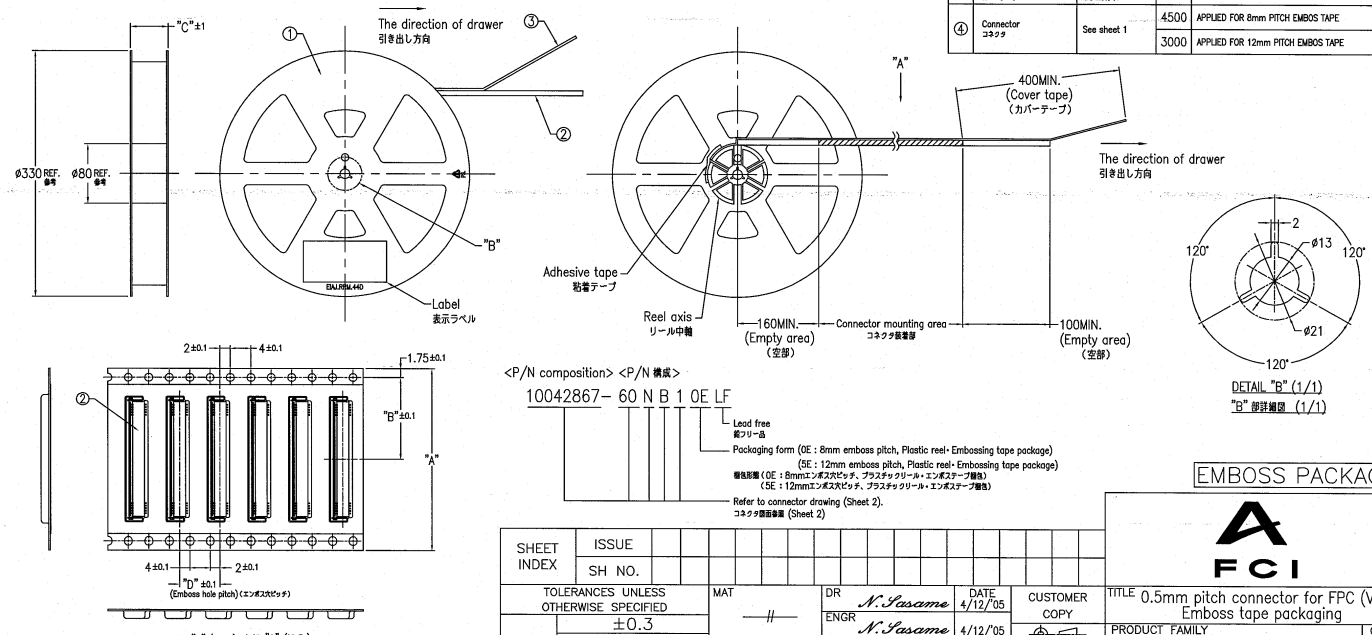
REVISIONS				
REV	DESCRIPTION	ECN	BY	DATE
A	RELEASED	J04-0452	N.S	12/8/04
B	REVISED	J05-0005	N.S	1/7/05
C	REVISED	J05-0188	N.S	4/12/05

NOTE
 1. This article carries out the emboss tape package of the 0.5mm pitch connector for FPC.
 2. The shape and dimension of this article are based on JIS C 0806.
 (Taping of electronic parts (Surface mounted device))

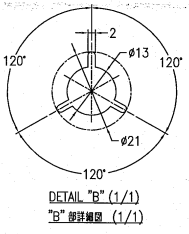
注記
 1. 本品は 0.5mm ピッチ FPC 用コネクタをエンボステープ梱包したものである。
 2. 本品の形状及び寸法規定は JIS C 0806 (電子部品のテーピング (表面実装部品)) に準拠する。

PARTS TABLE 部品表

No.	Part name 部品名	Material 材質	QTY.	Note 備考
①	The reel for packaging 巻取リール	Polyethylene ポリエチレン	1	Color : White, Electrification prevention processing 色 白、帯電防止処理
②	Emboss tape エンボステープ	PET	1	Electrification prevention processing 帯電防止処理
③	Cover tape カバーテープ	Polyester ポリエステル	1	
④	Connector コネクタ	See sheet 1	4500 3000	APPLIED FOR 8mm PITCH EMBOS TAPE APPLIED FOR 12mm PITCH EMBOS TAPE



<P/N composition> <P/N構成>
 10042867- 60 N B 1 0E LF
 Lead free
銅フリー品
 Packaging form (0E : 8mm emboss pitch, Plastic reel-Embossing tape package)
(SE : 12mm emboss pitch, Plastic reel-Embossing tape package)
 巻取形態 (0E : 8mmピッチエンボステープ、プラスチックリール-エンボステープ梱包)
(SE : 12mmピッチエンボステープ、プラスチックリール-エンボステープ梱包)
 Refer to connector drawing (Sheet 2).
 コネクタ詳細図表 (Sheet 2)



EMBOSS PACKAGE



SHEET INDEX	ISSUE SH NO.	MAT	DR	DATE	CUSTOMER COPY	TITLE
			N. Sasame	4/12/05		0.5mm pitch connector for FPC (VLH) Emboss tape packaging
			N. Sasame	4/12/05		PRODUCT FAMILY 58GF FLEX 0.5
			m. Kato	4/7/05		SCALE 1/5
			M. Kato	4/14/05		SIZE B
						DWG. NO. 10042867
						REV C
						SHEET 3of3

DO NOT SCALE PRINT THIS INFORMATION IS CONFIDENTIAL AND IS DISCLOSED TO YOU ON CONDITION THAT NO FURTHER DISCLOSURE IS MADE BY YOU TO OTHER THAN FCI PERSONNEL WITHOUT WRITTEN AUTHORIZATION FROM FCI JAPAN K.K.
 DF-004A REV F