

PRODUCT NO.
61729

PRODUCT NUMBER CODE

61729- X 0 X X X P S LF

BASE PRODUCT NUMBER

HOUSING COLOR OPTION

0 - WHITE
1 - BLACK

SHIELD OPTION

1 - FULL BACK
2 - PARTIAL BACK
S - FULL BACK (SPECIAL MATERIAL FOR 12,000 DURABILITY CYCLES)
P - PARTIAL BACK (SPECIAL MATERIAL FOR 12,000 DURABILITY CYCLES)

TERMINAL PLATING OPTION

0 - 50u" NI UNDERPLATED
30U" GXT CONTACT AREA
100u" PURE TIN TAIL AREA
1 - 50u" NI UNDERPLATED
30U" GOLD CONTACT AREA
100u" PURE TIN TAIL AREA

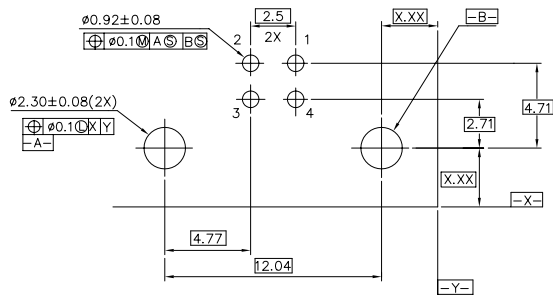
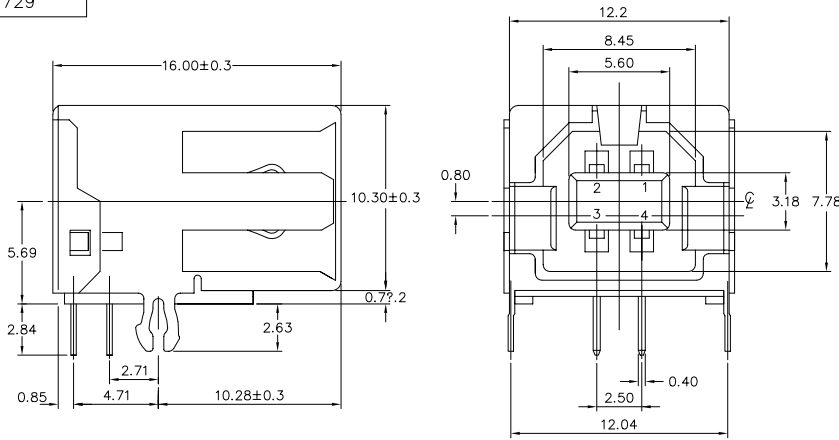
PACKAGING OPTION

B-TUBES
R-TAPE & REEL

DATE CODE OPTION

ONLY FOR PANASONIC

LEAD FREE OPTION



P.C. BOARD LAYOUT

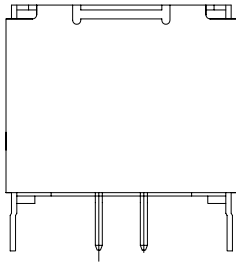
mat'l. code		tolerances unless otherwise specified		CUSTOMER COPY		FCJ		www.fcjconnect.com	
ltr	ec'n no	dr	date	linear	.0 ± 0.30 .00 ± 0.20	projection	title		
S	N05-0242	PH	08/22/05		.000± 0.10		USB RECEPTACLE B TYPE		
T	N06-0103	HB	04/15/06	angles	± 2'		MM/INCH	product family	
U	N08-0238	R.B	2008/11/03			scale		USB	
V	N08-0264	R.B	2008/12/08	dr	SHIRLEY HSU 03/03/97		4 : 1	code	
				enr	R Y LIU 03/03/97	A3		size	
				chr	R Y LIU 03/03/97		61729	dwg no	
				appd	JENN TSAO 03/03/97	1 of 2		sheet	
sheet index	revision sheet							1 of 2	

PDM: Rev:V

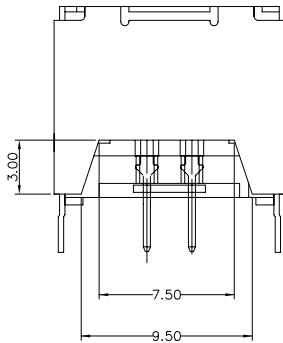
STATUS Released

Printed: Apr 08, 2010 6

PRODUCT NO.
61729



TYPE "1" FULL BACK



TYPE "2" PARTIAL BACK

NOTES:

- MATERIAL:
SHIELD & CONTACTS: COPPER ALLOY
HOUSING: UL 94V-0 THERMOPLASTIC. COLOR: SEE PRODUCT NUMBER CODE.
- PLATING: SEE PRODUCT NUMBER CODE.
SHIELD: BRIGHT TIN
NICKEL UNDERPLATE.
- DATUMS & BASIC DIMENSIONS TO BE DETERMINED BY CUSTOMER
- RECOMMENDED BOARD THICKNESS IS 1.57 mm (.062)
- PACKING STANDARD GS-14-920 WILL BE APPLIED FOR LEAD FREE P/N'S
- FOR LEAD FREE P/N, THE PRODUCT MEET EUROPEAN UNION DIRECTIVES AND OTHER COUNTRY REGULATION AS DESCRIBED IN GS-22-008
- FOR LEAD FREE P/N'S, THE HOUSING WILL WITHSTAND EXPOSURE TO 260°C PEAK TEMPERATURE FOR 40 SECONDS IN A CONVECTION, INFRO-RED OR VAPOR PHASE REFLOW OVEN.
- THE PART CAN BE USED FOR PIP PROCESS.

mat'l. code		tolerances unless otherwise specified		CUSTOMER COPY	FCJ www.fcjconnect.com	
ltr	ecn no	dr	date	linear	projection	title
v				.0 ± 0.20		USB RECEPTACLE B TYPE
				.00 ± 0.10		
				.000 ± 0.05		
				angles ± 2°		
		dr	SHIRLEY HSU 03/03/97	MM/INCH	product family	USB
		enr	R Y LIU 03/03/97	←	size	dwg no
		chr	R Y LIU 03/03/97	scale	5 : 1	A3
		appd	JENN TSAO 03/03/97			61729
sheet index	revision sheet					sheet 2 of 2

PDM: Rev:V STATUS Released Printed: Apr 08, 2010 6

All rights reserved. Reproduction or use in any form is prohibited without the express written permission of FCI.

All rights reserved. Reproduction or use in any form is prohibited without the express written permission of FCI.