

FCI CONFIDENTIAL

FCI

This document is the property of and contains CONFIDENTIAL and PROPRIETARY information of FCI. No part of this information shall be disclosed in any way or to any person without the written consent of FCI. Copyright © FCI

form: A3

DESCRIPTION : ABOVE PCB, DECK AND PUSH ROD LOCATION ARE AS VIEW BY USER.

PRODUCT NO.	PUSH ROD CLOSEST TO PCB	LOCATION DECK FARTHEST TO PCB	STAND-OFF HEIGHT	CLOSEST TO PCB	FARTHEST FROM PCB	MATING RECEPTACLE D	P.C.B SIDE	RECOMMENDED P.C.B LAYOUT (SEE PAGE 6&7)	MOUNT STYLE TO PCB AND PUSH ROD SIDE
				EJ HDR ASS'Y B	EJ HDR ASS'Y C				
200CA	RIGHT	RIGHT	0.0	61126-002CA	61125-005CA	RECEPTACLE PART NO. 91931-31169	ABOVE	LAYOUT 1	
220CA	RIGHT	RIGHT	2.2	61125-020CA	61125-025CA			LAYOUT 2	
240CA	RIGHT	RIGHT	4.3	61125-040CA	61125-045CA			LAYOUT 2	
250CA	RIGHT	RIGHT	5.0	61125-050CA	61125-055CA			LAYOUT 2	
220CAC	RIGHT	RIGHT	2.2	61125-020CAC	61125-025CAC			LAYOUT 2	
240CAC	RIGHT	RIGHT	4.3	61125-040CAC	61125-045CAC			LAYOUT 2	
250CAC	RIGHT	RIGHT	5.0	61125-050CAC	61125-055CAC			LAYOUT 2	
300CA	LEFT	LEFT	0.0	61126-102CA	61125-105CA			LAYOUT 1	
320CA	LEFT	LEFT	2.2	61125-120CA	61125-125CA			LAYOUT 2	
340CA	LEFT	LEFT	4.3	61125-140CA	61125-145CA			LAYOUT 2	
350CA	LEFT	LEFT	5.0	61125-150CA	61125-155CA	LAYOUT 2			
700CA	RIGHT	RIGHT	0.0	61126-502CA	61125-505CA	RECEPTACLE PART NO. 91931-31169	BELOW	LAYOUT 3	
720CA	RIGHT	RIGHT	2.2	61125-520CA	61125-525CA			LAYOUT 4	
740CA	RIGHT	RIGHT	4.3	61125-540CA	61125-545CA			LAYOUT 4	
750CA	RIGHT	RIGHT	5.0	61125-550CA	61125-555CA			LAYOUT 4	
800CA	LEFT	LEFT	0.0	61126-602CA	61125-605CA			LAYOUT 3	
820CA	LEFT	LEFT	2.2	61125-620CA	61125-625CA			LAYOUT 4	
840CA	LEFT	LEFT	4.3	61125-640CA	61125-645CA			LAYOUT 4	
850CA	LEFT	LEFT	5.0	61125-650CA	61125-655CA			LAYOUT 4	

OR

ORDERING INFORMATION

ORDERING INFORMATION		
NAME	PART NO.	Q'TY
A EJECT HEADER ASS'Y	61124-*****	1
D MATING RECEPTACLE	91931-31169	2

ORDERING INFORMATION		
NAME	PART NO.	Q'TY
B DECK CLOSEST TO PCB	61125-*****	1
C DECK FARTHEST FROM PCB	61125-*****	1
D MATING RECEPTACLE	91931-31169	2

OR

ORDERING INFORMATION

ORDERING INFORMATION		
NAME	PART NO.	Q'TY
B DECK CLOSEST TO PCB	61126-*****	1
C DECK FARTHEST FROM PCB	61125-*****	1
D MATING RECEPTACLE	91931-31169	1

mat'l. code		surface ISO 1302	tolerance ISO 406 ISO 101	projection 101	product family
ltr	ecn no	dr	date	tolerances unless otherwise specified	title
C	T03-0216	W	06/09/03	angles linear ± 0.30	EJECTOR HEADER ASS'Y 3.3V SMT, TYPE 1/2/3
D	N05-0059	W	03/03/05	±2'	MM
E	N05-0140	W	05/31/05	scale 1:1	dwg no 61124 sheet 1 of 8 size A4
F	N05-0217	WB	07/25/05	dr WENDY CHEN 07/06/95	engr L.W. LU 07/06/95
G	N08-0169	MZ	08/13/07	chr JOSEPH HSIAO 07/06/95	pppd JENN TSAO
sheet index	revision sheet	G	G	G	G
1	2	3	4	5	6
7	8				
type CUSTOMER		Drawing			

PDM: Rev:G

STATUS: Released

Printed: May 06, 2009

6

DESCRIPTION : ABOVE PCB, DECK AND PUSH ROD LOCATION ARE AS VIEW BY USER.

PRODUCT NO.	PUSH ROD LOCATION		STAND-OFF HEIGHT	CLOSEST TO PCB	FARTHEST FROM PCB	MATING RECEPTACLE ④	P.C.B SIDE	RECOMMENDED P.C.B LAYOUT (SEE PAGE 6&7)	MOUNT STYLE TO PCB AND PUSH ROD SIDE
	DECK CLOSEST TO PCB	DECK FARTHEST TO PCB		EJ HDR ASS'Y ②	EJ HDR ASS'Y ③				
① 61124-*****	RIGHT	RIGHT	0.0	61126-002CALF	61125-005CALF	RECEPTACLE PART NO. 91931-31169LF	ABOVE	LAYOUT 1	
220CALF	RIGHT	RIGHT	2.2	61125-020CALF	61125-025CALF			LAYOUT 2	
240CALF	RIGHT	RIGHT	4.3	61125-040CALF	61125-045CALF			LAYOUT 2	
250CALF	RIGHT	RIGHT	5.0	61125-050CALF	61125-055CALF			LAYOUT 2	
220CACL	RIGHT	RIGHT	2.2	61125-020CACL	61125-025CACL			LAYOUT 2	
240CACL	RIGHT	RIGHT	4.3	61125-040CACL	61125-045CACL			LAYOUT 2	
250CACL	RIGHT	RIGHT	5.0	61125-050CACL	61125-055CACL			LAYOUT 2	
251CACL	LEFT	RIGHT	5.0	61125-050CACL	61125-155CACL			LAYOUT 2	
300CALF	LEFT	LEFT	0.0	61126-102CALF	61125-105CA			LAYOUT 1	
320CALF	LEFT	LEFT	2.2	61125-120CALF	61125-125CA			LAYOUT 2	
340CALF	LEFT	LEFT	4.3	61125-140CALF	61125-145CA	LAYOUT 2			
350CALF	LEFT	LEFT	5.0	61125-150CALF	61125-155CA	LAYOUT 2			
700CALF	RIGHT	RIGHT	0.0	61126-502CALF	61125-505CA	RECEPTACLE PART NO. 91931-31169LF	BELOW	LAYOUT 3	
720CALF	RIGHT	RIGHT	2.2	61125-520CALF	61125-525CA			LAYOUT 4	
740CALF	RIGHT	RIGHT	4.3	61125-540CALF	61125-545CA			LAYOUT 4	
750CALF	RIGHT	RIGHT	5.0	61125-550CALF	61125-555CA			LAYOUT 4	
800CALF	LEFT	LEFT	0.0	61126-602CALF	61125-605CA			LAYOUT 3	
820CALF	LEFT	LEFT	2.2	61125-620CALF	61125-625CA			LAYOUT 4	
840CALF	LEFT	LEFT	4.3	61125-640CALF	61125-645CA			LAYOUT 4	
850CALF	LEFT	LEFT	5.0	61125-650CALF	61125-655CA			LAYOUT 4	

OR

ORDERING INFORMATION

ORDERING INFORMATION		
NAME	PART NO.	Q'TY
① EJECT HEADER ASS'Y	61124-*****LF	1
④ MATING RECEPTACLE	91931-31169LF	2

OR

ORDERING INFORMATION

ORDERING INFORMATION		
NAME	PART NO.	Q'TY
② DECK CLOSEST TO PCB	61126-*****LF	1
③ DECK FARTHEST FROM PCB	61125-*****LF	1
④ MATING RECEPTACLE	91931-31169LF	1

NOTE:

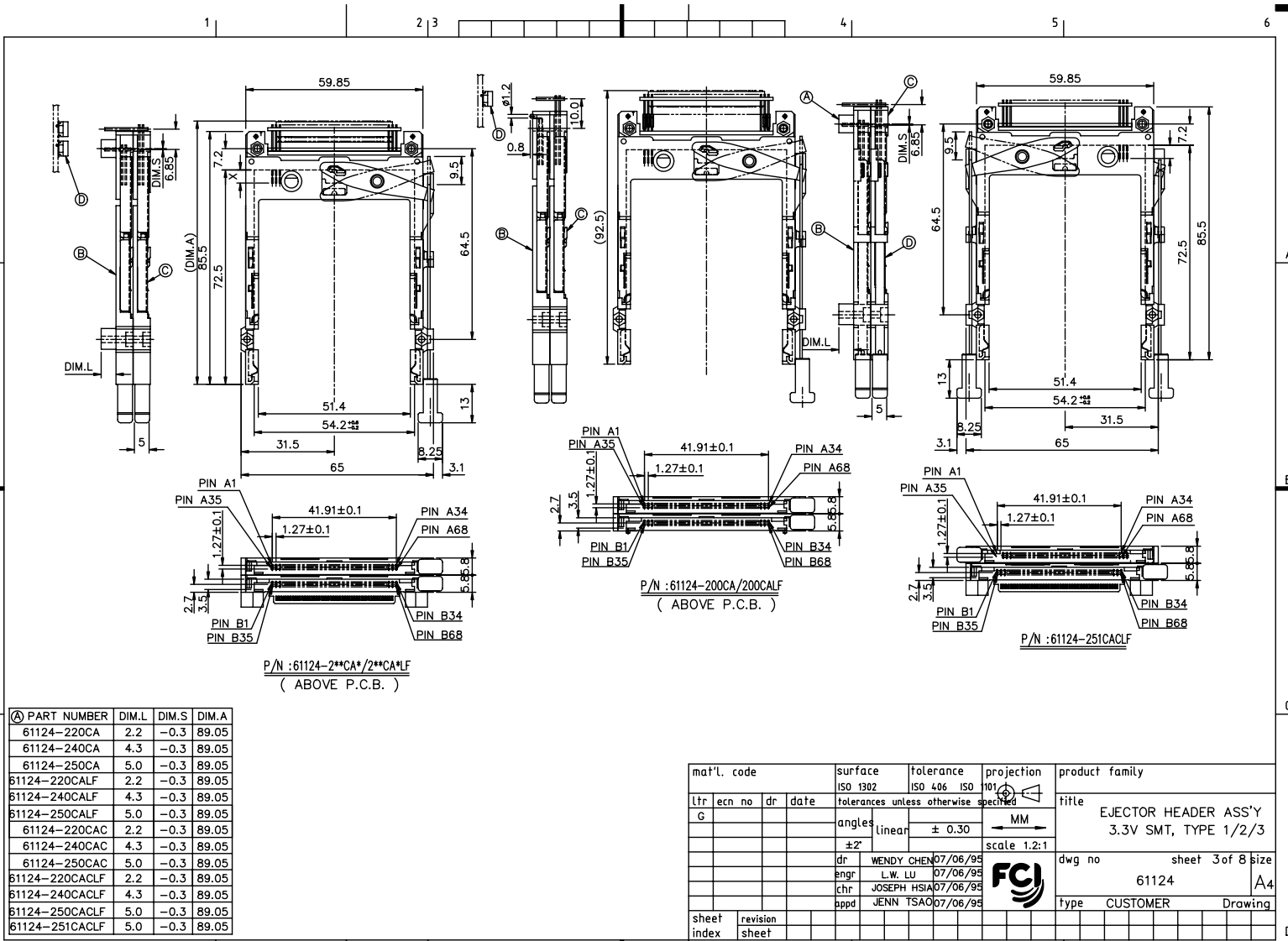
- THE HOUSING WILL WITHSTAND EXPOSURE TO 260°C PEAK TEMPERATURE FOR 10 SECONDS IN A WAVE SOLDER APPLICATION WITH A 1.00MM MINIMUM THICK CIRCUIT BOARD.
- THE PRODUCTS FOR SUFFIX " LF " MEET EUROPEAN UNION DIRECTIVES AND OTHER COUNTRY REGULATIONS AS DESCRIBED IN GS-22-008 OTHER PRODUCTS ARE COMPLIANT EXCEPT FOR Pb.
- LEAD FREE P/N PACKAGING MEETS GS-14-920 SPECIFICATION
- FINISH (PIN)
  - CONTACT AREA : 0.1 µm MIN. GOLD OVER
  - 0.5 µm MIN. Pd-Ni ( FOR-\*\*\*CA-\*\*\*CALF)
  - 0.5 µm MIN. Pd-Ni ( FOR-\*\*\*CAC-\*\*\*CACL)
  - SOLDER TAIL( FOR -\*\*\*\*\* ) : 2.5 µm MIN. Sn-Pb
  - SOLDER TAIL( FOR -\*\*\*\*\*LF ) : 2.5 µm MIN. PURE Sn

mat'l. code	surface ISO 1302	tolerance ISO 406 ISO 101	projection	product family
lfr ecn no dr date	tolerances unless otherwise specified	linear ± 0.30	MM	title
G	angles	±2'	scale 1.2:1	EJECTOR HEADER ASS'Y 3.3V SMT, TYPE 1/2/3
	dr WENDY CHEN 07/06/95	enr L.W. LU 07/06/95		dwg no 61124 sheet 2 of 8 size A4
	chr JOSEPH HSIAO 07/06/95	pppd JENN TSAO		type CUSTOMER Drawing
sheet index	revision sheet			

FCI CONFIDENTIAL

FCI

This document is the property of and contains CONFIDENTIAL and PROPRIETARY information of FCI. No part of this information shown on this document may be used in any way or disclosed to others without the written consent of FCI. Copyright © FCI



P/N : 61124-2\*\*CA\*/2\*\*CA\*LF  
( ABOVE P.C.B. )

P/N : 61124-200CA/200CALF  
( ABOVE P.C.B. )

P/N : 61124-251CALF

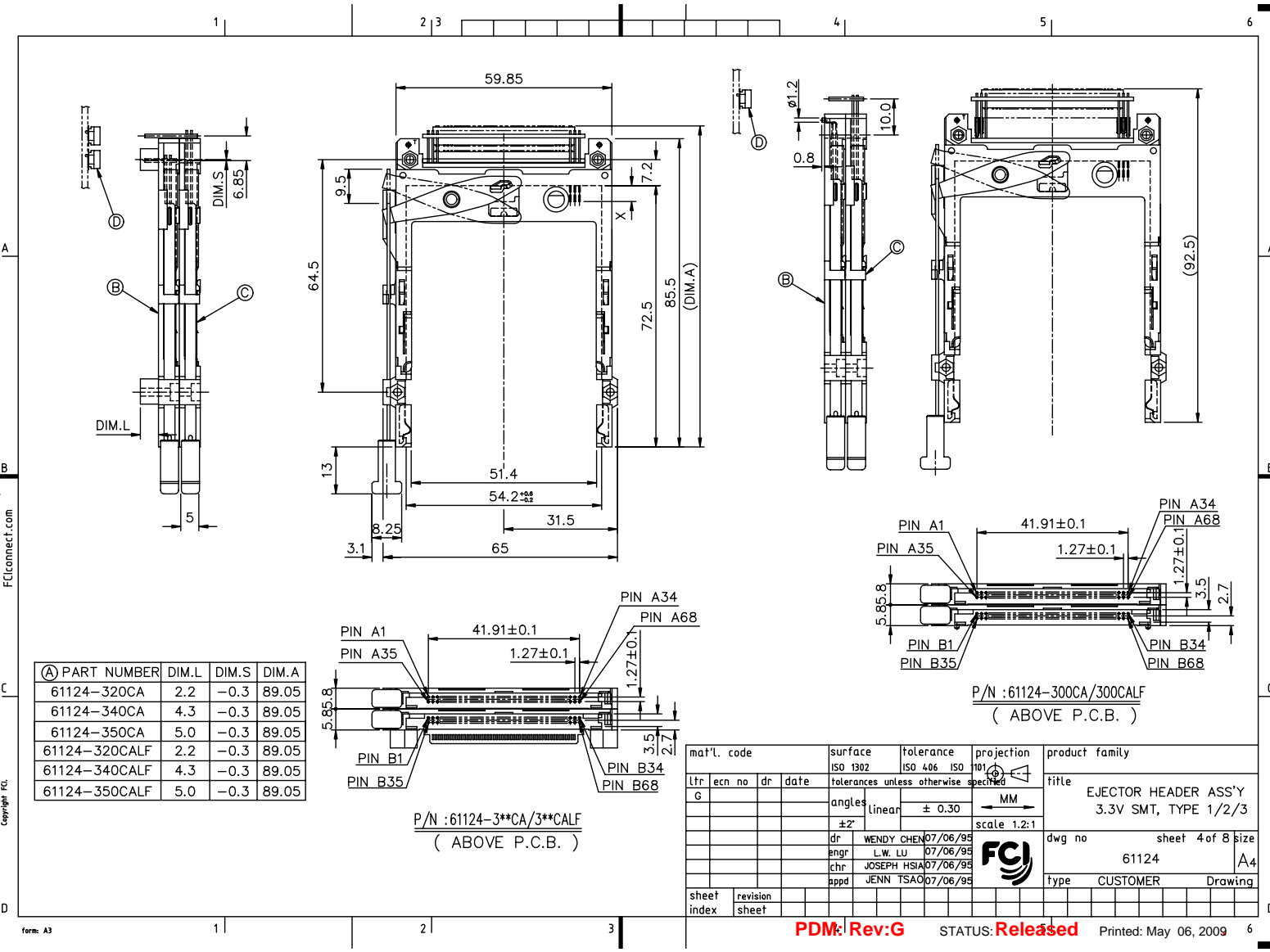
④ PART NUMBER	DIM.L	DIM.S	DIM.A
61124-220CA	2.2	-0.3	89.05
61124-240CA	4.3	-0.3	89.05
61124-250CA	5.0	-0.3	89.05
61124-220CALF	2.2	-0.3	89.05
61124-240CALF	4.3	-0.3	89.05
61124-250CALF	5.0	-0.3	89.05
61124-220CAC	2.2	-0.3	89.05
61124-240CAC	4.3	-0.3	89.05
61124-250CAC	5.0	-0.3	89.05
61124-220CACLF	2.2	-0.3	89.05
61124-240CACLF	4.3	-0.3	89.05
61124-250CACLF	5.0	-0.3	89.05
61124-251CALF	5.0	-0.3	89.05

mat'l. code	surface ISO 1302	tolerance ISO 406 ISO 101	projection 101	product family
lfr	ecn no	dr	date	title
G				EJECTOR HEADER ASS'Y 3.3V SMT, TYPE 1/2/3
	angles	linear	± 0.30	MM
	± 2°			scale 1.2:1
	dr	WENDY CHEN	07/06/95	
	enr	L.W. LU	07/06/95	
	chr	JOSEPH HSIAO	07/06/95	
	appd	JENN TSAO	07/06/95	
sheet index	revision sheet			dwg no 61124
				sheet 3 of 8 size A4
				type CUSTOMER Drawing

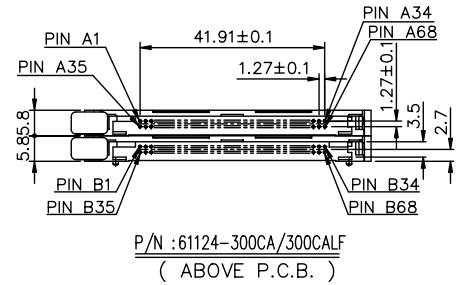
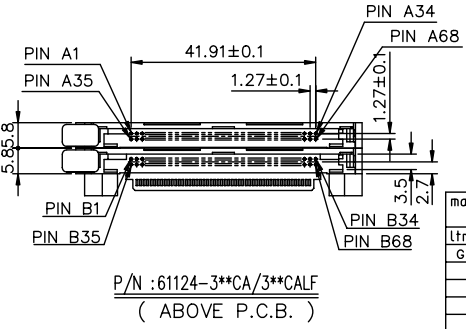
FCI CONFIDENTIAL



This document is the property of and includes CONFIDENTIAL and PROPRIETARY information of FCI. No part of this information shown on this document may be used in any way or disclosed to other parties without the written consent of FCI.  
Copyright © FCI



(A) PART NUMBER	DIM.L	DIM.S	DIM.A
61124-320CA	2.2	-0.3	89.05
61124-340CA	4.3	-0.3	89.05
61124-350CA	5.0	-0.3	89.05
61124-320CALF	2.2	-0.3	89.05
61124-340CALF	4.3	-0.3	89.05
61124-350CALF	5.0	-0.3	89.05



mat'l. code		surface	tolerance	projection	product family
ltr		ISO 1302	ISO 406 ISO 101	101	EJECTOR HEADER ASS'Y 3.3V SMT, TYPE 1/2/3
ecn no		tolerances unless otherwise specified			
dr		angles	linear ± 0.30	MM	dwg no 61124 sheet 4 of 8 size A4
date		±2'	scale 1.2:1		
dr		WENDY CHEN	07/06/95		type CUSTOMER Drawing
enr		L.W. LU	07/06/95		
chr		JOSEPH HSIAO	07/06/95		
ppd		JENN TSAO	07/06/95		
sheet index	revision sheet				

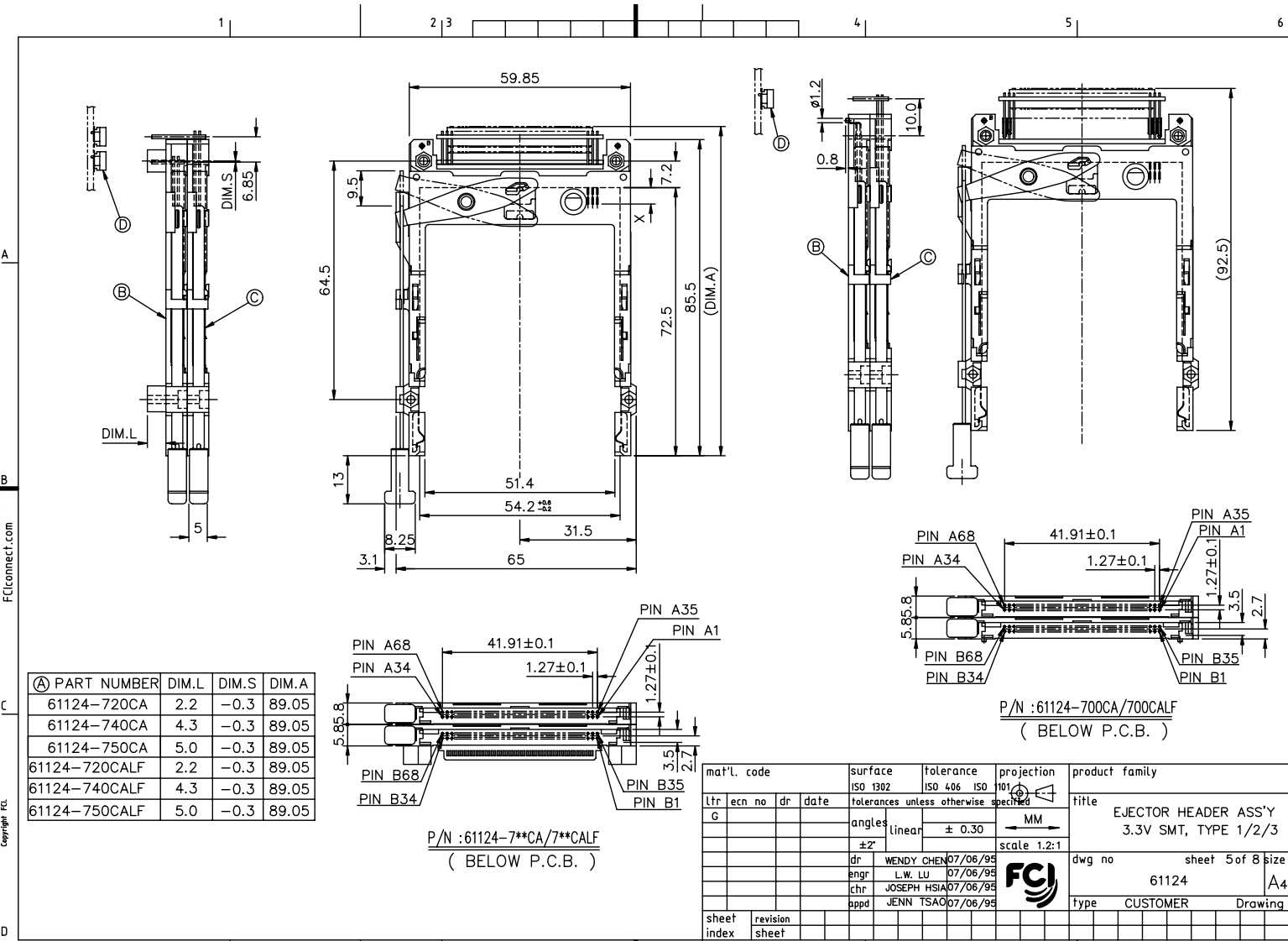
PDM: Rev:G STATUS: Released Printed: May 06, 2009 6

form: A3

FCI CONFIDENTIAL

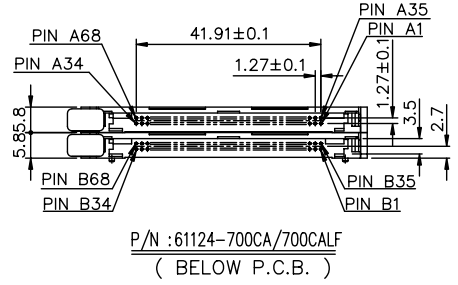


This document is the property of and includes CONFIDENTIAL and PROPRIETARY information of FCI. No part of the information shown on this document may be used in any way or disclosed to other parties without the written consent of FCI. Copyright © FCI



(A) PART NUMBER	DIM.L	DIM.S	DIM.A
61124-720CA	2.2	-0.3	89.05
61124-740CA	4.3	-0.3	89.05
61124-750CA	5.0	-0.3	89.05
61124-720CALF	2.2	-0.3	89.05
61124-740CALF	4.3	-0.3	89.05
61124-750CALF	5.0	-0.3	89.05

P/N : 61124-7\*\*CA/7\*\*CALF  
( BELOW P.C.B. )



mat'l. code	surface ISO 1302	tolerance ISO 406 ISO 1012	projection 1012	product family
ltr	ecn no	dr	date	title
G				EJECTOR HEADER ASS'Y 3.3V SMT, TYPE 1/2/3
				angles linear ± 0.30
				scale 1.2:1
				MM
				dwg no 61124 sheet 5 of 8 size A4
				type CUSTOMER Drawing
sheet index	revision sheet			

PDM: Rev:G STATUS: Released Printed: May 06, 2009 6

form: A3

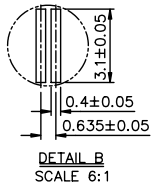
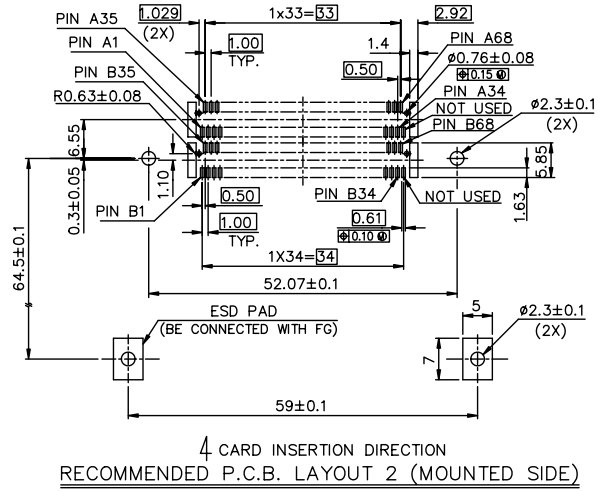
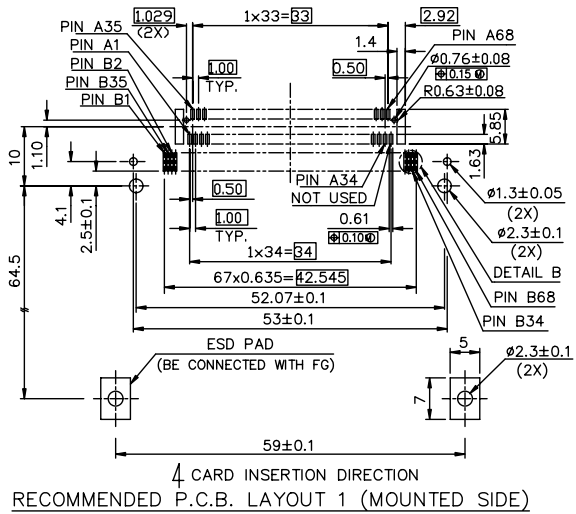


FCI CONFIDENTIAL

FCI

This document is the property of and contains CONFIDENTIAL and PROPRIETARY information of FCI. No part of this information shall be disclosed in any way or by any means without the written consent of FCI. Copyright © FCI.

PRODUCT NO.  
61124-\*\*\*\*\*/\*\*\*\*L



mat'l. code		surface	tolerance	projection	product family	
ISO 1302		ISO 406	ISO 101			
ltr	ecr	no	dr	date	title	
G					EJECTOR HEADER ASS'Y 3.3V SMT, TYPE 1/2/3	
angles linear ± 0.30					scale 1.2:1	
±2'					MM	
dr	WENDY CHEN		07/06/95		FCI	
enr	L.W. LU		07/06/95			
chr	JOSEPH HSIAO		07/06/95			
pppd	JENN TSAO		07/06/95			
sheet index	revision sheet				dwg no	sheet 7 of 8 size
					61124	A4
					type	CUSTOMER Drawing

PDM: Rev:G STATUS: Released Printed: May 06, 2009 6

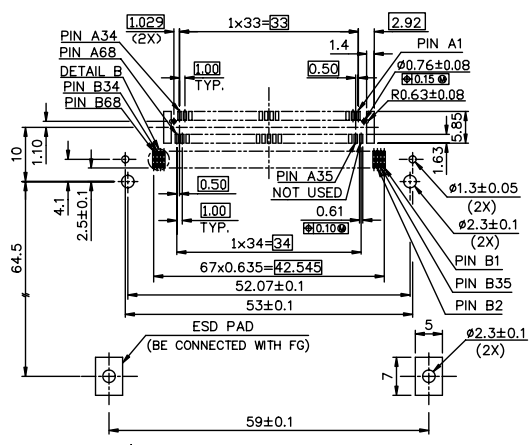
form: A3

FCI CONFIDENTIAL

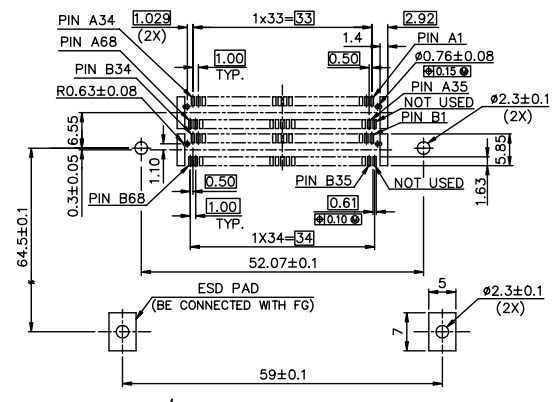
FCI

This document is the property of and includes CONFIDENTIAL and PROPRIETARY information of FCI. No part of this information shown on this document may be used in any way or disclosed to others without the written consent of FCI. Copyright © FCI.

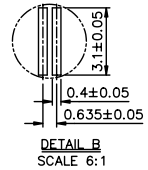
PRODUCT  
61124-\*\*\*\*\*/\*\*\*\*LF



RECOMMENDED P.C.B. LAYOUT 3 (MOUNTED SIDE)



RECOMMENDED P.C.B. LAYOUT 4 (MOUNTED SIDE)



mat'l. code		surface	tolerance	projection	product family
ISO 1302		ISO 406	ISO 101		
ltr	ecr no	dr	date	title	
G				EJECTOR HEADER ASS'Y 3.3V SMT, TYPE 1/2/3	
angles		linear	± 0.30	MM	
±2°				scale 1.2:1	
dr	WENDY CHEN	07/06/95		dwg no	sheet 8 of 8 size
enr	L.W. LU	07/06/95		61124	A4
chr	JOSEPH HSIAO	07/06/95		type	CUSTOMER Drawing
ppd	JENN TSAO	07/06/95			
sheet index	revision sheet				

PDM: Rev:G STATUS: Released Printed: May 06, 2009 6

form: A3