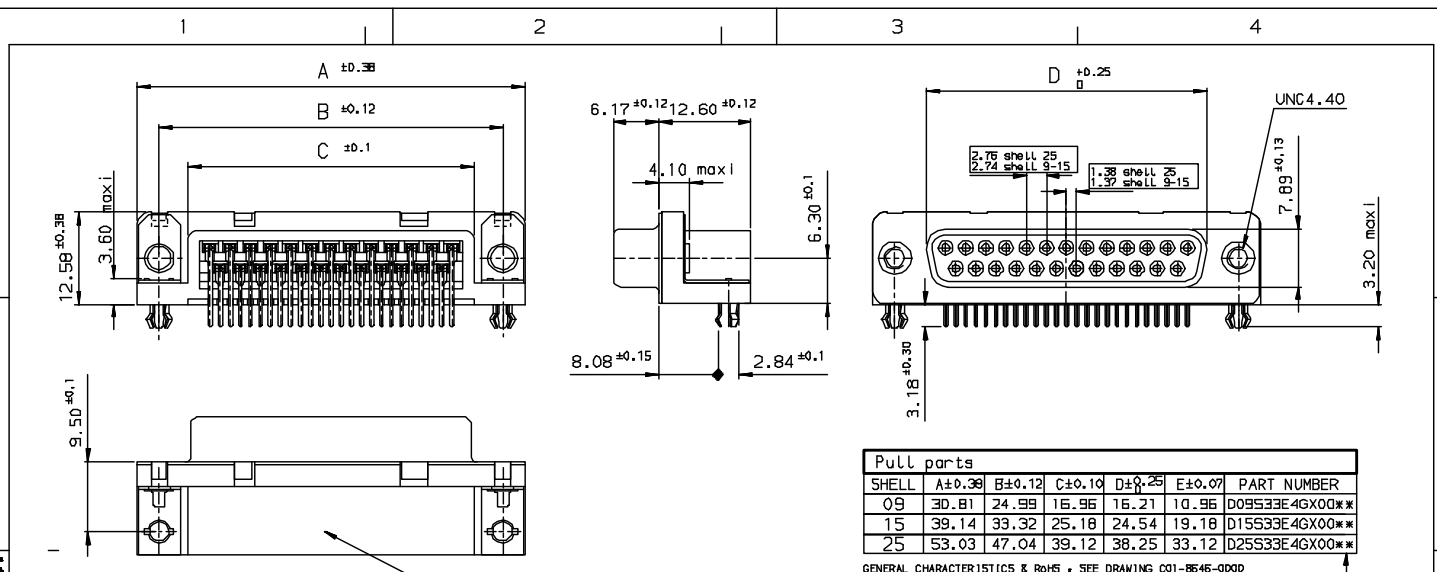


Tutti i diritti sono riservati. Riproduzione o comunicazione in forma
 elettronica o meccanica senza permesso scritto di FCI.

FCI

All rights are reserved. Reproduction or use in third parties in any
 form without written permission from the proprietor,
 FCI.

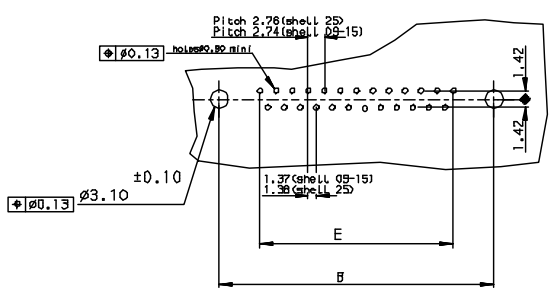


Pull parts						
SHELL	A ±0.38	B ±0.12	C ±0.10	D ±0.25	E ±0.07	PART NUMBER
09	30.81	24.99	16.96	16.21	10.96	D09S33E4GX00**
15	39.14	33.32	25.18	24.54	19.16	D15S33E4GX00**
25	53.03	47.04	39.12	38.25	33.12	D25S33E4GX00**

GENERAL CHARACTERISTICS & REFS - SEE DRAWING C01-8546-0200

LF FOR LEAD FREE

PC card drilling dimensions (after plating)
(thickness 1.60 ± 0.20mm)



INDEX	DATE	REVISION DESCRIPTION
1	27/05	LEAD FREE DETAILS ADDED

Ur	Con no	Dr	date
•	06-0124	JS	27/05

Dr	JUHN BLEEDA	14/10/94	Product Family	D-SUB	Tolerance LINEAR ±0.1 ANGULAR ±1°	Projection MM
Eng	GEORGE VJ	14/10/94	Spec ref		Size	A3
Chr	GEORGE VJ	27/05	Material		Scale	1:1
Appr	K Somasundaram	27/05			ECN	
Title			Socket Connect, DELTA D RIGHT ANGLE WITH NUT, HARPOON AND METAL PLATE		Dwg no	C01-8546-0146
Catalog no			DELTA-D		CUSTOMER COPY	Sheet 1 of 1