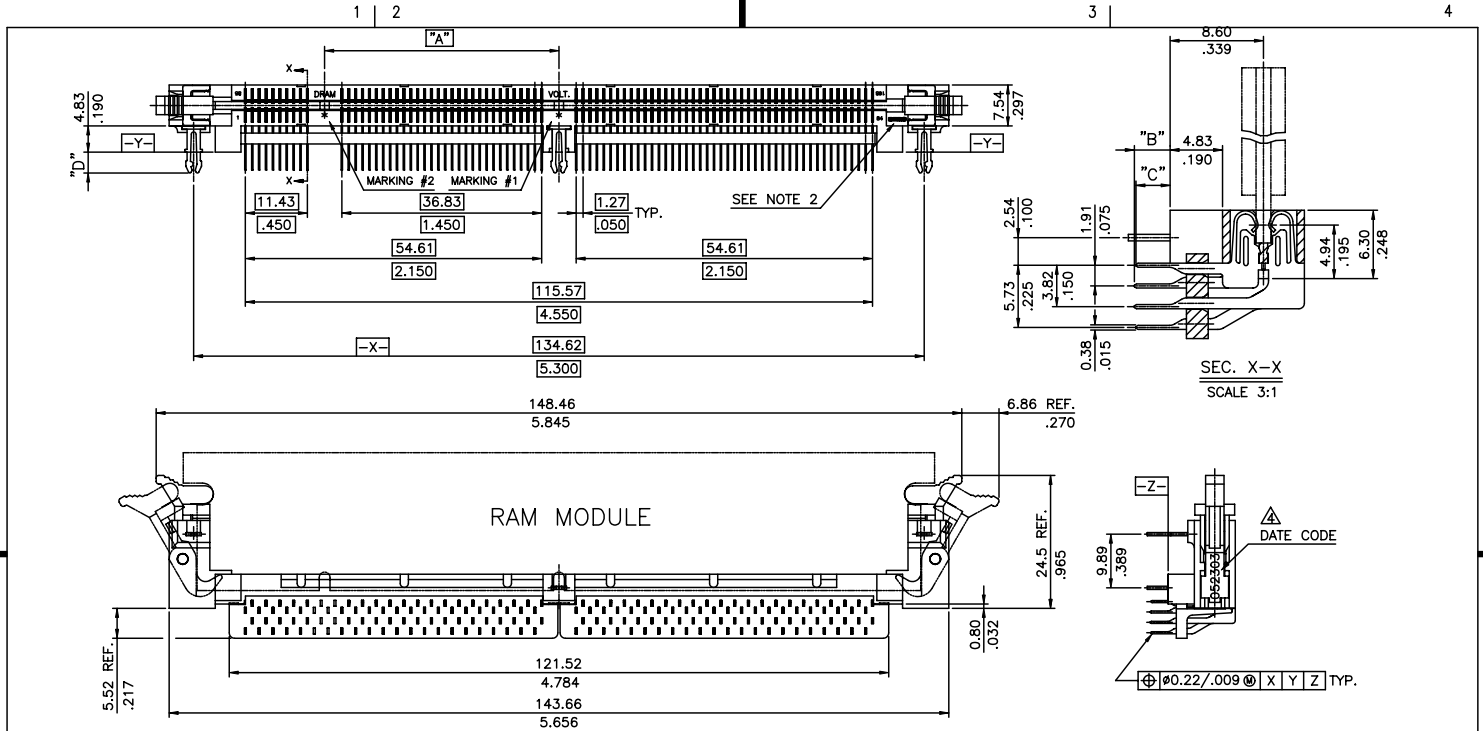


Tous droits strictement réservés. Reproduction ou communication à des tiers interdite sous quelque forme que ce soit sans autorisation écrite du propriétaire. Property of FCI. Droits de reproduction FCI.

All rights strictly reserved. Reproduction or issue to third parties in any form whatever is not permitted without written authority from the proprietor. Property of FCI. Copyright FCI.

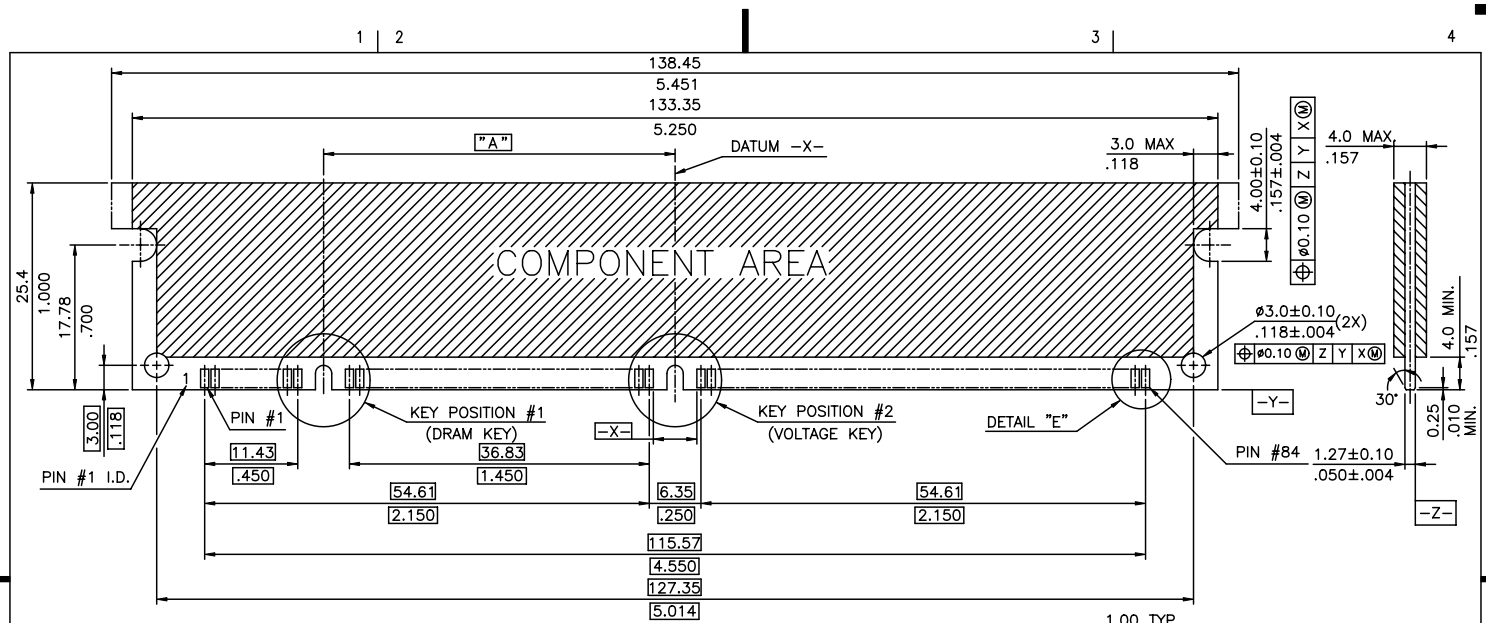


- NOTE:
- MATERIAL:  
HOUSING: LIQUID CRYSTAL POLYMER OR OTHER HIGH PERFORMANCE RESINS, GLASS FILLED UL94V-0 RATED, COLOR BLACK.  
EJECTOR: LIQUID CRYSTAL POLYMER OR OTHER HIGH PERFORMANCE RESINS, GLASS FILLED UL94V-0 RATED, COLOR NATURAL.  
TAIL GUIDE: LIQUID CRYSTAL POLYMER OR OTHER HIGH PERFORMANCE RESINS, GLASS FILLED UL94V-0 RATED, COLOR BLACK.  
TERMINAL: PHOSPHOR BRONZE.  
METAL CLIP: PHOSPHOR BRONZE.
  - BERG LOGO TO BE APPROXIMATELY LOCATED AS SHOWN ON PRINT.
  - PRODUCT SPECIFICATION: GES-12-066.  
THE DATE CODE IS SHOWN "MM-DD-YY".
  - THIS PRODUCT MEETS EUROPEAN UNION DIRECTIVES AND OTHER COUNTRY REGULATIONS AS DESCRIBED IN GS-22-008.
  - THE HOUSING WILL WITHSTAND EXPOSURE TO 260 PEAK TEMPERATURE FOR 10 SECONDS IN A WAVE SOLDER APPLICATION.

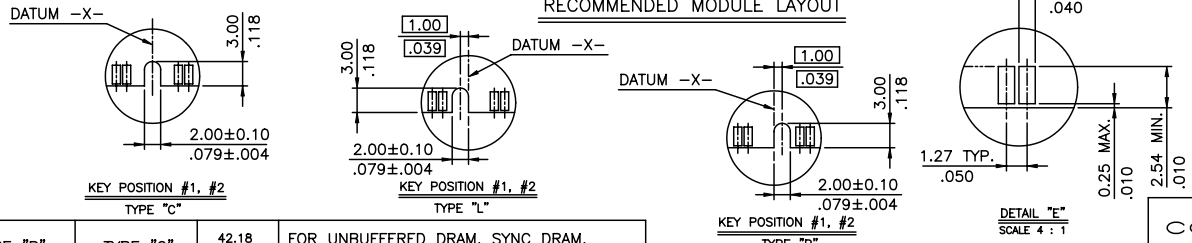
mat'l. code				tolerances unless otherwise specified		CUSTOMER COPY	FCI	
ltr	ecn no	dr	date	linear	.X ±0.38/.015	projection	www.fciconnect.com	
M	T05-0029	R C	02/15/05		.XX ±0.25/.010		title	
N	T05-0039	R C	02/05/05		.XXX ±0.13/.005		DIMM, .050" 1-ROW, 168P R/A ASSY METAL CLIP	
G	T80559	M W	12/07/98	angles	0° ±2°		product family	
H	T00063	M W	03/02/00	dr	CATHY LIN 11/30/95		DIMM	
J	T03-0194	M W	05/23/03	enrg	CATHY LIN 11/30/95	size		
K	T04-0119	M W	03/11/04	chr	WAYNE YU 11/30/95	dwg no		
L	T04-0145	M W	04/06/04	appd	JENN TSAO 11/30/95	code		
sheet index				revision	N J J N	scale	1:1	A4
sheet				1	2	3	4	88638

Tous droits strictement réservés. Reproduction ou communication à des tiers interdite sous quelque forme que ce soit sans autorisation écrite du propriétaire. Property of FCI. Droits de reproduction FCI.

All rights strictly reserved. Reproduction or issue to third parties in any form whatever is not permitted without written authority from the proprietor. Property of FCI. Copyright FCI.



RECOMMENDED MODULE LAYOUT

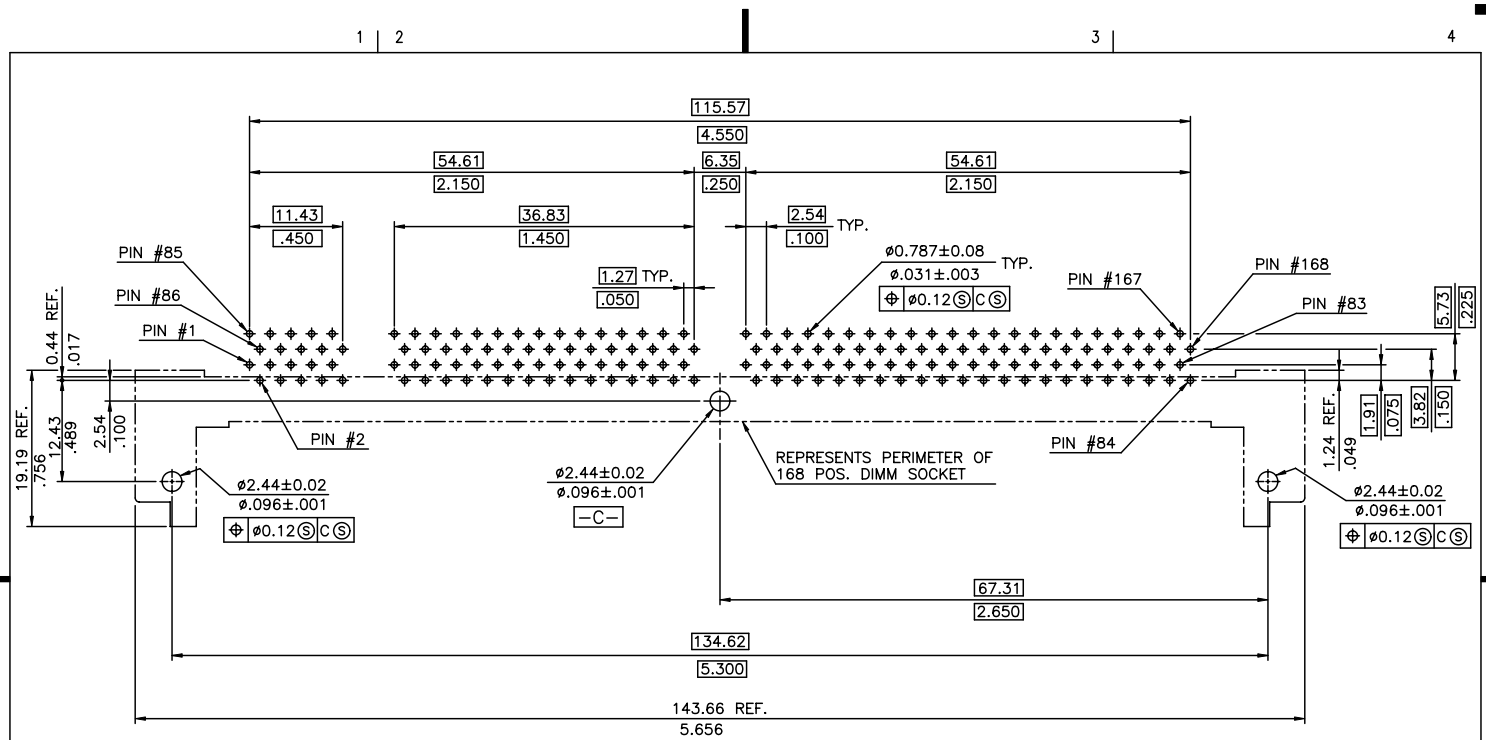


KEY POS. #1	KEY POS. #2	DIM. "A"	DESCRIPTION
TYPE "R"	TYPE "C"	42.18 1.661	FOR UNBUFFERED DRAM, SYNC DRAM, REGISTERED SDRAM, 3.3 VOLT.
TYPE "L"	TYPE "C"	44.18 1.739	FOR OPEN, 3.3 VOLT.
TYPE "C"	TYPE "C"	43.18 1.700	FOR STANDARD DRAM, BUFFERED, 3.3 VOLT.
TYPE "R"	TYPE "L"	41.18 1.621	FOR NON-STANDARD DRAM, 5.0 VOLT.
TYPE "L"	TYPE "L"	43.18 1.700	FOR SYNC DRAM, 5.0 VOLT.
TYPE "C"	TYPE "L"	42.18 1.661	FOR STANDARD DRAM, 5.0 VOLT.

mat'l. code				tolerances unless otherwise specified		CUSTOMER COPY		CONFIDENTIAL	
ltr	ecn no	dr	date	linear	.X ±0.38/.015	projection	title	www.fciconnect.com	
J					.XX ±0.25/.010	MM	DIMM	DIMM	
				angles	.XXX ±0.13/.005	scale	product family	R/A ASSY METAL CLIP	
				dr	0° ±2°	1.5:1	size	88638	
				enr			dwg no	code	
				chr	CATHY LIN 11/30/95		A4	2 of	
				appd	WAYNE YU 11/30/95			sheet	
sheet index	revision sheet				JENN TSAO 11/30/95			2 of	

Tous droits strictement réservés. Reproduction ou communication a des tiers interdite sous quelque forme que ce soit sans autorisation écrite du propriétaire. Property of FCI. Droits de reproduction FCI.

All rights strictly reserved. Reproduction or issue to third parties in any form whatever is not permitted without written authority from the proprietor. Property of FCI. Copyright FCI.



RECOMMENDED CIRCUIT BOARD HOLE LAYOUT

CONFIDENTIAL

mat'l. code				tolerances unless otherwise specified		CUSTOMER COPY		FCI <a href="http://www.fciconnect.com">www.fciconnect.com</a>	
ltr	ecn no	dr	date	linear	.X $\pm 0.38 / .015$	projection	title		
J					.XX $\pm 0.25 / .010$		DIMM, .050" 1-ROW, 168P		
				angles	.XXX $\pm 0.13 / .005$		R/A ASSY METAL CLIP		
					0° $\pm 2'$		product family	code	
				dr	CATHY LIN 11/30/95	MM	DIMM	-	
				enr	CATHY LIN 11/30/95		size	-	
				chr	WAYNE YU 11/30/95	scale	dwg no	-	
				appd	JENN TSAO 11/30/95	1.5:1	A4	88638	
sheet index	revision								
	sheet								

ACAD PDM: Rev:N STATUS Released cage code 22526 Printed JUL 28, 2010

88638 - □ □ □ □

STYLE

- 1 : FOR STANDARD DRAM, 5.0 VOLT.
- 2 : FOR SYNC DRAM, 5.0 VOLT.
- 3 : FOR NON-STANDARD DRAM, 5.0 VOLT.
- 4 : FOR STANDARD DRAM, BUFFERED, 3.3 VOLT.
- 5 : FOR OPEN, 3.3 VOLT.
- 6 : FOR UNBUFFERED DRAM, SYNC DRAM, REGISTERED SDRAM, 3.3 VOLT.

PLATING

CODE	CONTACT	SOLDERTAIL	UNDERPLATE
1	150μ(3.81μm) MIN. TIN/LEAD	100μ(2.54μm) MIN. TIN/LEAD	50μ(1.27μm) MIN. NICKEL OVERALL
2	15μ(0.38μm) MIN. GOLD		
3	30μ(0.76μm) MIN. GOLD		
4	3μ(0.076μm) MIN. GOLD		
5	15μ(0.38μm) MIN. GXT		
6	30μ(0.76μm) MIN. GXT		
7	60μ(1.52μm) MIN. GXT		
2LF	15μ(0.38μm) MIN. GOLD	100μ(2.54μm) MIN. 100% TIN	
3LF	30μ(0.76μm) MIN. GOLD		
4LF	3μ(0.076μm) MIN. GOLD		
5LF	15μ(0.38μm) MIN. GXT		
6LF	30μ(0.76μm) MIN. GXT		
7LF	60μ(1.52μm) MIN. GXT		

PEG TYPE

- 0 : WITH METAL CLIP + DIM."D"=3.45/.136.
- 1 : WITH METAL CLIP + DIM."D"=3.85/.152.

TAIL LENGTH

CODE	DIM. "B"	DIM. "C"
0	2.54 .100	2.39 .094
1	3.30 .130	3.15 .124

PROD. NO.	DIM."A"	DIM."B"	DIM."C"	DIM."D"	HOUSING COLOR	EJECTOR COLOR	TAIL GUIDE COLOR	STYLE	STYLE MARKING #2	STYLE MARKING #1
88638-1000*	42.18 1.661	2.54 .100	2.39 .094	3.45 .136	BLACK	IVORY	BLACK	FOR STANDARD DRAM, 5 VOLT.	STD	5.0
88638-1110*		3.30 .130	3.15 .124	3.85 .152	BLACK	IVORY	BLACK			
88638-1111*		3.30 .130	3.15 .124	3.85 .152	IVORY	BLACK	IVORY			
88638-2000*	43.18 1.700	2.54 .100	2.39 .094	3.45 .136	BLACK	IVORY	BLACK	FOR SYNC DRAM, 5 VOLT.	SYNC	5.0
88638-2001*		3.30 .130	3.15 .124	3.85 .152	IVORY	BLACK	IVORY			
88638-2110*		3.30 .130	3.15 .124	3.85 .152	BLACK	IVORY	BLACK			
88638-2111*	3.30 .130	3.15 .124	3.85 .152	IVORY	BLACK	IVORY				
88638-3000*	41.18 1.621	2.54 .100	2.39 .094	3.45 .136	BLACK	IVORY	BLACK	FOR NON-STANDARD DRAM, 5 VOLT.	NONE	5.0
88638-3001*		3.30 .130	3.15 .124	3.85 .152	IVORY	BLACK	IVORY			
88638-3110*		3.30 .130	3.15 .124	3.85 .152	BLACK	IVORY	BLACK			
88638-3111*	3.30 .130	3.15 .124	3.85 .152	IVORY	BLACK	IVORY				
88638-4000*	43.18 1.700	2.54 .100	2.39 .094	3.45 .136	BLACK	IVORY	BLACK	FOR STANDARD DRAM, BUFFERED, 3.3 VOLT.	STD	3.3
88638-4001*		3.30 .130	3.15 .124	3.85 .152	IVORY	BLACK	IVORY			
88638-4110*		3.30 .130	3.15 .124	3.85 .152	BLACK	IVORY	BLACK			
88638-4111*	3.30 .130	3.15 .124	3.85 .152	IVORY	BLACK	IVORY				
88638-5000*	44.18 1.739	2.54 .100	2.39 .094	3.45 .136	BLACK	IVORY	BLACK	FOR OPEN, 3.3 VOLT.	NO MARKING	3.3
88638-5001*		3.30 .130	3.15 .124	3.85 .152	IVORY	BLACK	IVORY			
88638-5110*		3.30 .130	3.15 .124	3.85 .152	BLACK	IVORY	BLACK			
88638-5111*	3.30 .130	3.15 .124	3.85 .152	IVORY	BLACK	IVORY				
88638-6000*	42.18 1.661	2.54 .100	2.39 .094	3.45 .136	BLACK	IVORY	BLACK	FOR UNBUFFERED DRAM, SYNC DRAM, REGISTERED SDRAM, 3.3 VOLT.	NONE	3.3
88638-6001*		3.30 .130	3.15 .124	3.85 .152	IVORY	BLACK	IVORY			
88638-6002*		3.30 .130	3.15 .124	3.85 .152	IVORY	IVORY	IVORY			
88638-6110*	42.18 1.661	2.54 .100	2.39 .094	3.45 .136	BLACK	IVORY	BLACK	FOR UNBUFFERED DRAM, SYNC DRAM, REGISTERED SDRAM, 3.3 VOLT.	NONE	3.3
88638-6111*		3.30 .130	3.15 .124	3.85 .152	IVORY	BLACK	IVORY			
88638-6112*		3.30 .130	3.15 .124	3.85 .152	IVORY	IVORY	IVORY			
88638-6010*				3.45 .136	BLACK	IVORY	BLACK			

COLOR OF HOUSING AND EJECTOR

- 0 : BLACK HOUSING + IVORY EJECTOR + BLACK TAIL GUIDE
- 1 : IVORY HOUSING + BLACK EJECTOR + IVORY TAIL GUIDE
- 2 : IVORY HOUSING + IVORY EJECTOR + IVORY TAIL GUIDE

CONFIDENTIAL

REMARK:  
1. SOME P/N ARE NOT AVAILABLE. LIST AS BELOW:  
88638-4002  
88638-60012  
88638-60102  
88638-61003

mat'l. code				tolerances unless otherwise specified		CUSTOMER COPY		title	
ltr	ecn no	dr	date	linear	.X ±0.38/.015	projection	title	DIMM, .050" 1-ROW, 168P R/A ASS'Y METAL CLIP	
N					.XX ±0.25/.010		DIMM		
				angles	.XXX ±0.13/.005		product family	size	
				dr	0° ±2°	MM	size	dwg no	code
				enr		1:1	A4	88638	sheet
				chr	CATHY LIN 11/30/95				4 of
				appd	WAYNE YU 11/30/95				
					JENN TSAO 11/30/95				
sheet index	revision	sheet							

ACAD

PDM: Rev:N

STATUS: Released

22526  
Printed Jul 28, 2010

Tous droits strictement reserves. Reproduction ou communication a des tiers interdite sous quelque forme que ce soit sans autorisation écrite du propriétaire. Property of FCI. Droits de reproduction FCI.

All rights strictly reserved. Reproduction or issue to third parties in any form whatever is not permitted without written authority from the proprietor. Property of FCI. Copyright FCI.