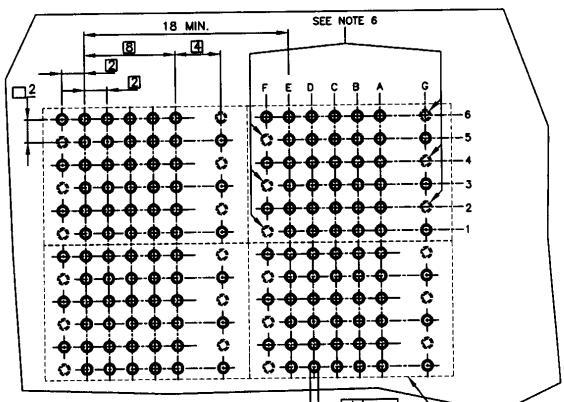
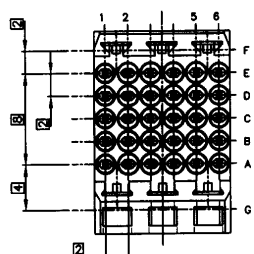
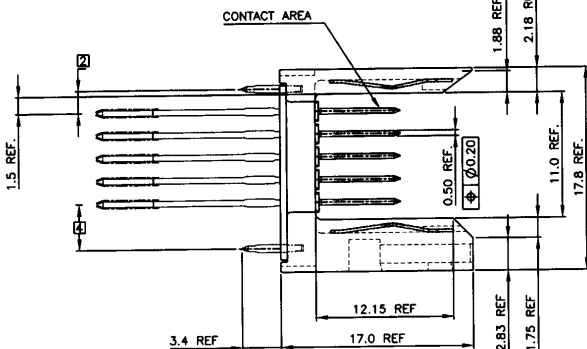


Tous droits strictement réservés. Reproduction ou communication à des tiers interdite sans quelque forme que ce soit sans autorisation écrite du propriétaire. Propriété de FCI. Droite de reproduction FCI.

All rights strictly reserved. Reproduction or issue to third parties in any form whatsoever is prohibited without written authority from the proprietor. Property of FCI. Copyright FCI.

PRODUCT NUMBER SEE SHEET 2 OR 3



- NOTES:
- FOR DIM "A", AND "B" SEE SHEET 2
 - BODY MATL: ZINC ALLOY
 - PIN MATL: PHOSPHOR BRONZE.
 - CONTACT AREA "S" ONLY FOR REAR PLUG-UP.
 - PLATING ON PRESSFIT AREA: SnPb
 - THESE HOLES ARE NEEDED WHEN USING AN EE SHROUD, i.e., 70438-111 OR 72033-001.
 - GROUND PINS IN POSITIONS F2, F4, F6, G1, G3, AND G5.
 - DIM A & B AFTER ASSEMBLY TO BOARD.
 - FOR SELECT LOAD P/N'S SEE SHEET 3.
 - THIS PLATING HAS BEEN QUALIFIED TO THE CRITERIA FOR THE QUALITY LEVEL III FOR THE UNCONTROLLED ENVIRONMENT AS DEFINED BY BELLCORE SPECIFICATION GR-1217-CORE

| PLATING CODE | THICKNESS | UNDERPLATING |
|--------------|-------------|----------------|
| -1YY | 0.8 um GOLD | 1.3 um NI MIN. |
| -2YY | 2.0 um GOLD | 1.3 um NI MIN. |
| -3YY | 1.3 um GOLD | 1.3 um NI MIN. |
| -5YY | NOTE 10 | NOTE 10 |
| -9YY | 0.8 um GXT | 1.3 um NI MIN. |

| PRESS-FIT HOLES | OPTION 1 | OPTION 2 |
|-----------------------------|---------------|--------------------------|
| HOLE DIAMETER AFTER PLATING | 0.65 - 0.77 | 0.65 - 0.80 |
| DRILLED HOLE | 0.78 - 0.83 | 0.81 - 0.86 (0.83 DRILL) |
| COPPER PLATING | 0.025 - 0.050 | 0.025 MIN. |
| TIN PLATING | 0.005 - 0.015 | 0.005 - 0.015 |

| | | | | | |
|-------------|----------------|---------------------------------------|----------|----------------------|--|
| mat'l. code | | tolerances unless otherwise specified | | CUSTOMER COPY | Electronics www.fciconnect.com |
| ltr | ecn no | dr | date | projection | |
| A | V70116 | SAR | 1/27/97 | linear | title 5 ROW SHIELDED P. F. CABLE HDR W/GND PINS product family METRAL(tm) code 213 size dwg no 72031 sheet 1 of 3 |
| B | V70382 | MDF | 3/17/97 | .XX±.13 .XXX±.051 | |
| C | V70751 | MDF | 5/28/97 | angles | scale 1:1 A |
| D | V90895 | HTB | 4/7/99 | dr | |
| E | V94473 | JWS | 12/29/99 | engr | |
| | | | | chr | |
| | | | | appd | |
| sheet index | revision sheet | E D D | 1 2 3 | | |

cage code 22526

ACAD

Tous droits strictement réservés. Reproduction ou communication à des fins interdites sous quelque forme que ce soit sans autorisation écrite du propriétaire. Propriété de FCI. Droits de reproduction FCI.

All rights strictly reserved. Reproduction or issue to third parties in any form whatsoever is not permitted without written authority from the proprietor. Property of FCI. Copyright FCI.



| PRODUCT NUMBER | ROW | DIM"A" | DIM"B" |
|----------------|-----|--------|--------|
| 72031-X11 | E | 6.5 | 4.3 |
| | D | 6.5 | 4.3 |
| | C | 6.5 | 4.3 |
| | B | 6.5 | 4.3 |
| | A | 6.5 | 4.3 |
| 72031-X13 | E | 5.75 | 4.3 |
| | D | 5.0 | 4.3 |
| | C | 5.75 | 4.3 |
| | B | 5.75 | 4.3 |
| | A | 6.5 | 4.3 |
| 72031-X14 | E | 5.75 | 4.3 |
| | D | 5.75 | 4.3 |
| | C | 7.25 | 4.3 |
| | B | 5.75 | 4.3 |
| | A | 5.75 | 4.3 |
| 72031-X16 | E | 5.75 | 4.3 |
| | D | 5.75 | 4.3 |
| | C | 5.75 | 4.3 |
| | B | 5.75 | 4.3 |
| | A | 5.75 | 4.3 |
| 72031-X18 | E | 5.0 | 4.3 |
| | D | 5.0 | 4.3 |
| | C | 5.0 | 4.3 |
| | B | 5.0 | 4.3 |
| | A | 5.0 | 4.3 |
| 72031-X19 | E | 6.5 | 4.3 |
| | D | 6.5 | 4.3 |
| | C | - | - |
| | B | 6.5 | 4.3 |
| | A | 6.5 | 4.3 |

NO REAR PLUG-UP

| PRODUCT NUMBER | ROW | DIM"A" | DIM"B" |
|----------------|-----|--------|--------|
| 72031-X21 | E | 6.5 | 13.6 |
| | D | 6.5 | 13.6 |
| | C | 6.5 | 13.6 |
| | B | 6.5 | 13.6 |
| | A | 6.5 | 13.6 |
| 72031-X23 | E | 5.75 | 13.6 |
| | D | 5.0 | 13.6 |
| | C | 5.75 | 13.6 |
| | B | 5.75 | 13.6 |
| | A | 6.5 | 13.6 |
| 72031-X24 | E | 5.75 | 13.6 |
| | D | 5.75 | 13.6 |
| | C | 7.25 | 13.6 |
| | B | 5.75 | 13.6 |
| | A | 5.75 | 13.6 |
| 72031-X26 | E | 5.75 | 13.6 |
| | D | 5.75 | 13.6 |
| | C | 5.75 | 13.6 |
| | B | 5.75 | 13.6 |
| | A | 5.75 | 13.6 |
| 72031-X28 | E | 5.0 | 13.6 |
| | D | 5.0 | 13.6 |
| | C | 5.0 | 13.6 |
| | B | 5.0 | 13.6 |
| | A | 5.0 | 13.6 |
| 72031-X29 | E | 6.5 | 13.6 |
| | D | 6.5 | 13.6 |
| | C | - | - |
| | B | 6.5 | 13.6 |
| | A | 6.5 | 13.6 |

REAR PLUG-UP OR WIRE WRAP

| KEY | |
|-----|-------------------|
| - | DENOTES EMPTY ROW |

| | | | | | | | |
|-------------|----------------|---------------------------------------|------|---------------|-----------|-----------------------------------|---|
| mat'l. code | | tolerances unless otherwise specified | | CUSTOMER COPY | | Electronics www.fciconnect.com | |
| ltr | ecr no | dr | date | linear | .X±.3 | projection | title |
| D | | | | angles | .XX±.13 | | 5 ROW SHIELDED P. F. CABLE HDR W/GND PINS |
| | | | | dr | .XXX±.051 | | product family |
| | | | | engr | 0' ±2' | MM | code |
| | | | | chr | | scale | 213 |
| | | | | appd | | 1:1 | sheet |
| sheet index | revision sheet | | | | | | 2 of |
| | | | | | | | 72031 |
| | | | | | | | cage code |
| | | | | | | | 22526 |
| | | | | | | | 4 |

ACAD

cage code 22526

4

A

B

1 | 2

3 |

4

1 | 2

3 |

4

