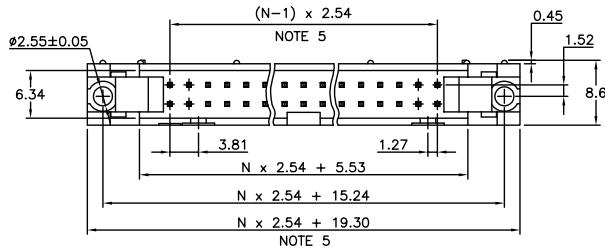


PRODUCT NUMBER  
71918-YXXLF

WHEN REQUIRED, ADD SUFFIX LETTER "L"  
INDICATES THE PRODUCT IS RoHS  
COMPATIBLE, SEE NOTE 10

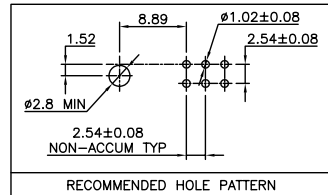
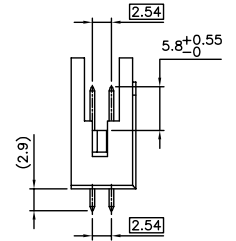
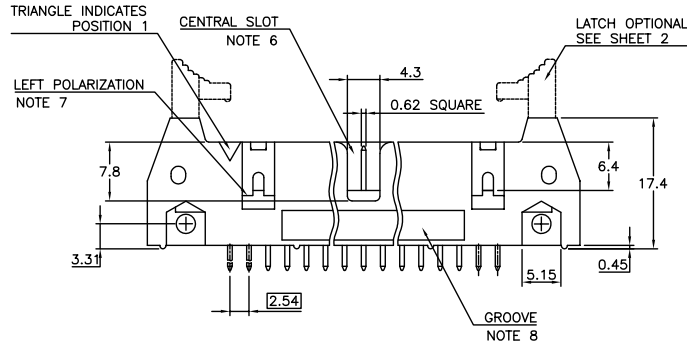
TOTAL NB OF POSITIONS, SEE SHEET 2

LATCHING  
0= WITHOUT LATCH  
1= STANDARD LATCH  
2= LOW PROFILE LATCH



NOTES:

- 1 - HOUSING MAT'L : GLASS FILLED THERMOPLASTIC. UL94V-0 COLOR: GREY
- 2 - PIN MATERIAL : PHOSPHOR BRONZE
- 3 - PRODUCT PACKAGED IN TUBES
- 4 - 40N MIN LATCH RETENTION FORCE AT FIRST EXTRACTION
- 5 - TO DETERMINE DIMENSIONS :  
N = NUMBER OF POSITIONS PER ROW  
EXAMPLE : 8 POS N x 2.54 = 20.32mm
- 6 - NO CENTRAL SLOT ON POSITIONS 6 & 8
- 7 - NO LEFT POLARIZATION ON POSITIONS 06, 08, 10, 14.
- 8 - NO GROOVE ON POSITIONS 06, 08, 10, 14, 30, 34
- 9 - 4.5mm SOLDER TAIL  
ORDER 71918-4XX (WITH STANDARD LATCH ONLY)
- 10 - RoHS COMPATIBLE PRODUCT SPECIFICATIONS
  - a - PLATING:  
- "LF" MEANS THE PRODUCT IS LEAD-FREE,  
2µm MINIMUM MATTE TIN OVER 1.27µm  
MINIMUM NICKEL UNDERPLATE.
  - b - MANUFACTURING PROCESS COMPATIBILITY  
- THE HOUSING WILL WITHSTAND EXPOSURE TO  
260°C ±5°C SOLDER BATH TEMPERATURE FOR  
5 SECONDS IN A WAVE SOLDER APPLICATION  
WITH A 1.6mm MIN THICK CIRCUIT BOARD.
  - c - LABELING:  
- MEETS PACKAGING SPECS AS PER GS-14-920
  - d - LEGAL STATEMENT: SEE GS-47-0004.



mat'l. code		surface	tolerance	projection	product family
SEE NOTES		ISO 1302	ISO 406 ISO 1101		QUICKIE
ltr	ecn no	dr	date	tolerances unless otherwise specified	title
Y	F12-0838	LMU	12.12.06	angles linear .X ±0.3 .XXX ±0.05	SHR.EL.HEADER STR DR TMT
T	F06-0229	LMU	06.07.17	scale 2:1	dwg no
U	F07-0195	LMU	07.05.25	dr	sheet 1 of 2
V	F08-0144	YOV	08.04.11	engd	size
W	F09-0232	LMU	09.12.15	chr	A3
X	F12-0011	LMU	12.02.06	appd	71918
sheet	revision	Y	U		type
index	sheet	1	2		CUSTOMER Drawing

PDM: Rev:Y

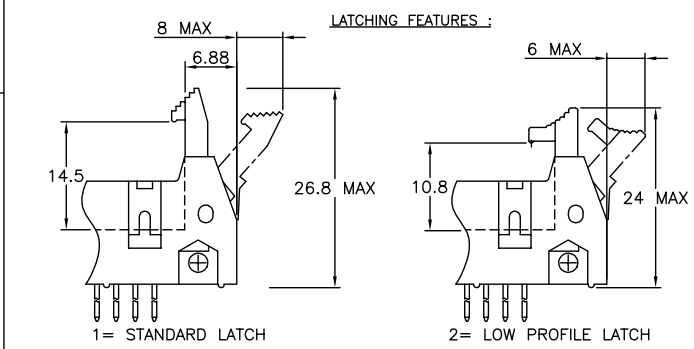
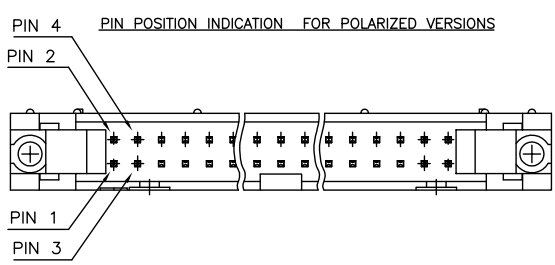
STATUS:Released

Printed: Dec 08, 2012

PRODUCT NUMBER	SIZE	LATCHING AVAILABILITY	MISSING PIN POSITIONS
71918-X06(LF)	2x3	0/1/2	
71918-X08(LF)	2x4	0/1/2	
71918-X10(LF)	2x5	0/1/2	
71918-X14(LF)	2x7	0/1/2	
71918-X16(LF)	2x8	0/1/2	
71918-X18(LF)	2x9	0/1/2	
71918-X20(LF)	2x10	0/1/2	
71918-X26(LF)	2x13	0/1/2	
71918-X27(LF)	2x13	0/1/2	PIN 21 & 22
71918-X30(LF)	2x15	0/1/2	
71918-X34(LF)	2x17	0/1/2	
71918-X35(LF)	2x17	0/1/2	PIN 2 & 3
71918-X40(LF)	2x20	0/1/2	
71918-X44(LF)	2x22	0/1/2	
71918-X50(LF)	2x25	0/1/2	
71918-X51(LF)	2x25	0/1/2	PIN 39 to 46
71918-X60(LF)	2x30	0/1/2	
71918-X64(LF)	2x32	0/1/2	

PLATING :

- 0.76µm GOLD/GXT (PdNi WITH GOLD FLASH) ON CONTACT AREA
- 3.81µm TIN-LEAD ON TAIL
- UNDERPLATE : 1.27µm Ni MIN
- WHEN SUFFIX LETTER "LF" IS REQUIRED, 2µm MIN MATTE TIN OVER 1.27µm MIN NICKEL IS PROVIDED INSTEAD OF TIN-LEAD



mat'l. code		surface		tolerance		projection		product family	
		ISO 1302		ISO 406 ISO 1101		mm		QUICKIE	
ltr		ecn no		date		tolerances unless otherwise specified		title	
R		F07-0195		LMU 07.05.25		angles linear .X ±0.3		SHR.EL.HEADER	
S		F08-0146		YOV 08.04.11		.XX ±0.15		STR DR TMT	
T		F12-0011		LMU 12.02.06		.XXX ±0.05		scale 2:1	
U		F12-0836		LMU 12.12.06		dr D.I.E 01.01.24		dwg no	
				engr J.M.C 01.01.24				sheet 2 of - size	
N		F04-0389		LMU 04.12.22		chr J.F.N 01.01.24		71918	
P		F06-0229		LMU 06.07.17		appd J.M.C 01.01.24		A3	
sheet index		revision sheet						type	
								CUSTOMER Drawing	