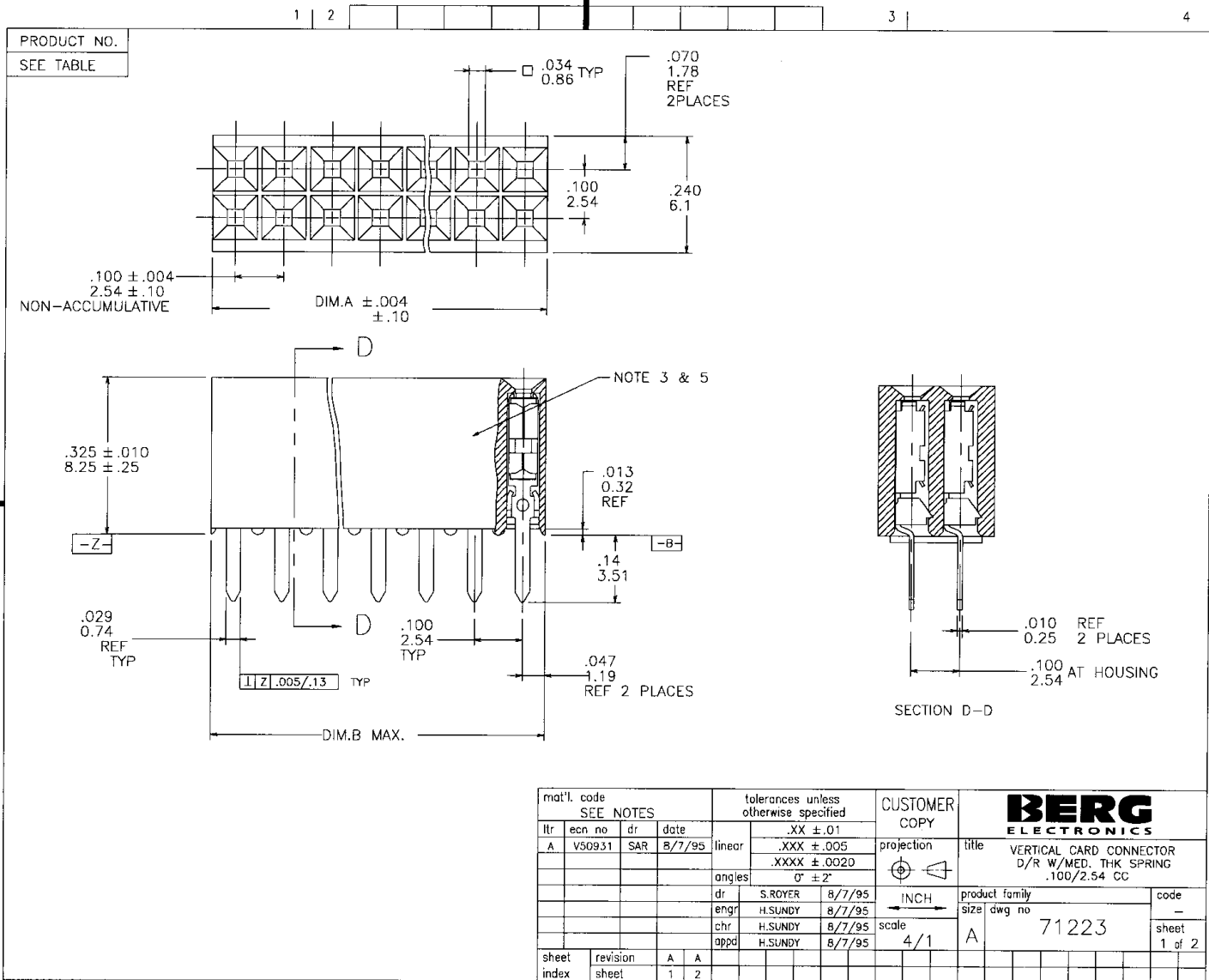


All rights strictly reserved. Reproduction or issue to third parties in any form  
 whatsoever is not permitted without written authority from the proprietor.  
 Property of ©BERG ELECTRONICS Copyright BERG ELECTRONICS INC.

Tous droits strictement réservés. Reproduction ou communication à des tiers interdite  
 sous quelque forme que ce soit sans autorisation écrite du propriétaire.  
 Propriété de ©BERG ELECTRONICS. Droits de reproduction BERG ELECTRONICS INC.



mat'l. code SEE NOTES				tolerances unless otherwise specified		CUSTOMER COPY		<b>BERG ELECTRONICS</b>		
ltr	ecm no	dr	date	linear	.XX ± .01	projection ↗	title VERTICAL CARD CONNECTOR D/R W/MED. THK SPRING .100/2.54 CC	product family size	dwg no 71223	code — sheet 1 of 2
A	V50931	SAR	8/7/95		.XXX ± .005					
				angles	.XXX ± .0020 0° ± 2°					
				dr	S.ROYER 8/7/95	INCH ↔	product family size	dwg no 71223	code — sheet 1 of 2	
				engr	H.SUNDY 8/7/95					
				chr	H.SUNDY 8/7/95					
				appd	H.SUNDY 8/7/95	scale 4/1				
sheet index	revision sheet	A	A	1	2					

form no. 7530-001-103

PDM: Rev:A

STATUS: Released

page code 22526  
Printed: Nov 10, 2004

Tous droits strictement réservés. Reproduction ou communication à des tiers interdite sous quelque forme que ce soit sans autorisation écrite du propriétaire. Propriété de BERG ELECTRONICS. Droits de reproduction BERG ELECTRONICS INC.

**BERG**  
ELECTRONICS

All rights strictly reserved. Reproduction or issue to third parties in any form whatever is not permitted without written authority from the proprietor. Property of BERG ELECTRONICS. Copyright BERG ELECTRONICS INC.

PRODUCT NO.	NO. OF POSITIONS	DIM 'A'	DIM 'B'
71223-010	2 X 10	.900/22.86	1.000/25.40

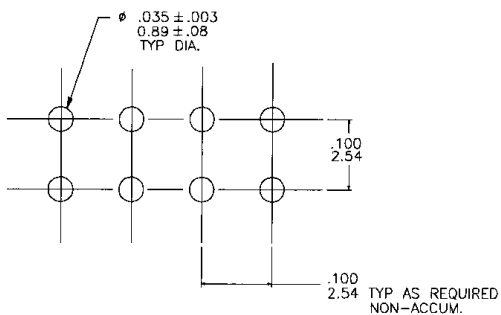


FIG. 1

NOTES.

- HOUSING MATERIAL.  
FILLED POLYESTER.FLAME RETARDANT PER UL 94V-0.  
COLOR:BLACK.
- TERMINAL MATERIAL.  
BODY:BRASS  
SPRING:BeCu,HEAT TREATED  
BODY PLATING: 30u"/.76u Au OVER 50u"/1.27u Ni IN CONTACT AREA.  
SOLDERTAIL PLATING: 100u"/2.54u TIN-LEAD OVER 50u"/1.27u Ni  
SPRING PLATING: GOLD FLASH
- PRODUCT TO BE MARKED "BERG", BERG FINAL PART NUMBER AND DATE CODE WITH .080/1.52 HIGH LETTERS. PARTS 2 X 8 OR LESS HAVE THIS INFORMATION ON TUBE LABEL INSTEAD OF HOUSING. DASH NUMBER WITH "U" AS FOURTH DIGIT (XXXX-XXU) IS UNMARKED.
- APPLICATION INFORMATION.  
A. RECOMMENDED MOUNTING HOLE PATTERN IS SHOWN IN FIG.1.  
B. ALL MATING PINS TO BE .025/.64 SQUARE ON TRUE CENTER OF GIVEN TERMINAL SPACINGS, WITHIN .015/.38 DIAMETER.  
C. SUGGESTED MATING PIN LENGTH, .210 ± .020/5.33 ± .51.

mat'l. code SEE NOTES		tolerances unless otherwise specified		CUSTOMER COPY		<b>BERG</b> ELECTRONICS		
ltr	ecn no	dr	date	linear	projection	title		
A				.XX ± .01		VERTICAL CARD CONNECTOR		
				.XXX ± .005		D/R W/MED. THK SPRING		
				.XXXX ± .0020		.100/2.54 CC		
				angles		product family	code	
				dr		size	71223	sheet 2 of
				engr		dwg no		
				chr		A		
				appd	scale	cage code		
					4/1	22526		
sheet	revision					4		
index	sheet					Printed: Nov 10, 2004		

form no. 7530-001-103

PDM: Rev:A

STATUS: Released

Printed: Nov 10, 2004