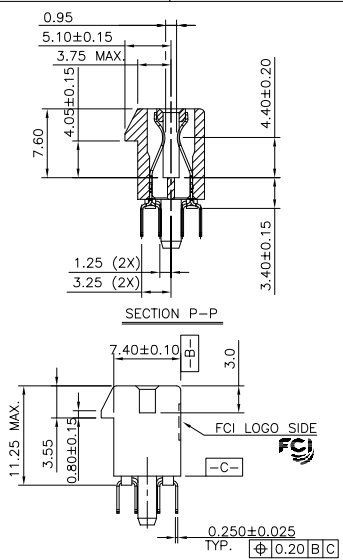
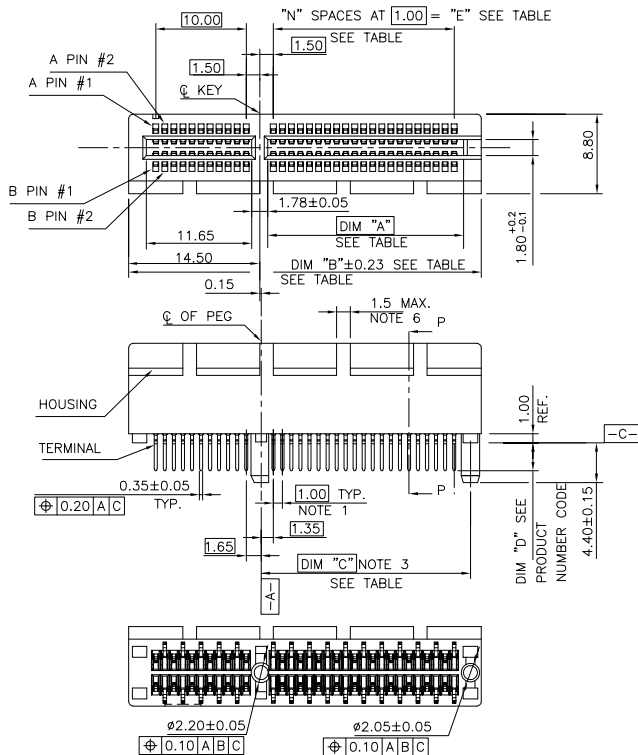




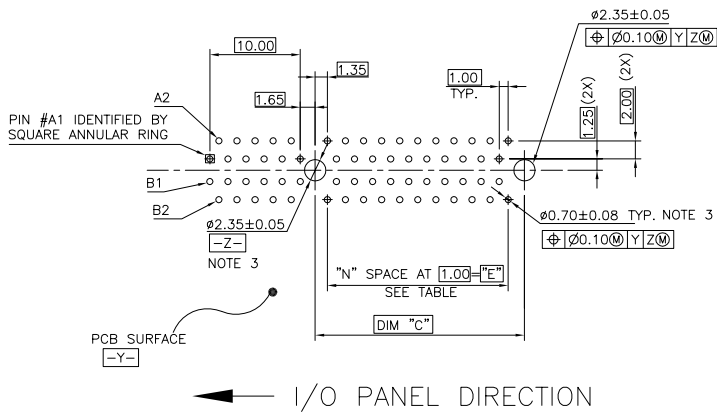
Copyright FCI



TWIN PLASTIC PEG TYPE

spec ref	*	dr	Andy Lu	2013-04-27	projection	mm	size	A4	scale	2:1
tolerance std	ASME Y14.5	eng	Andy Lu	2013-05-29			ecn no	rel level	Released	rev
TOLERANCES UNLESS OTHERWISE SPECIFIED		chr	---	---						
surface	linear	appr	Peiming Zheng	2013-05-29	product family		EDGE CARD		dwg no 10124782	A
ASME Y14.5	angular			cat. no.	-		Product - Customer Drw			
	0.X									
	0.XX									
	0.XXX									
	0°									
	± 0.3									
	± 0.20									
	± 0.100									
	± 2°									

Pro/E File - REV C - 2009-08-29



RECOMMENDED FOOTPRINT

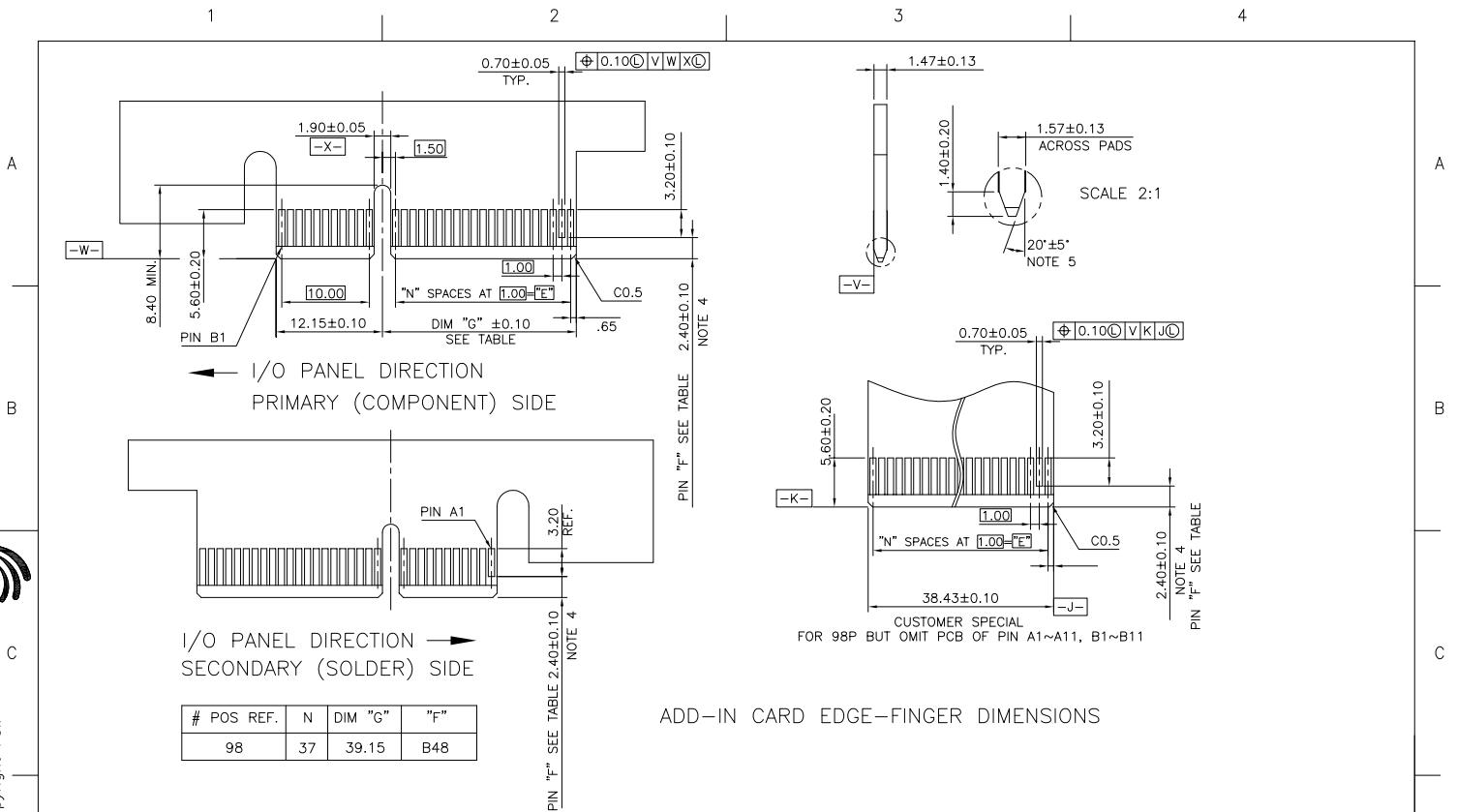
spec ref *		dr	Andy Lu	2013-04-27	projection	mm	size	A4	scale	2:1
tolerance std	TOLERANCES UNLESS OTHERWISE SPECIFIED	eng	Andy Lu	2013-05-29		mm	A4	2:1	ecn no	
ASME Y14.5		chr	---	---					rel level	
surface		linear	0.X	± 0.3	product family		EDGE CARD		rev	
ASME Y14.5		0.XX	± 0.20	title		10124782		A		
	angular	0°	± 2°	PCI EXPRESS CARD EDGE ONE OPEN-END STB ASS'Y		dwg no		rev		
www.fci.com		cat. no.		-		Product - Customer Drw		sheet 2 of 4		



Copyright FCI.



Copyright FCI.



ADD-IN CARD EDGE-FINGER DIMENSIONS

spec ref	*			dr	Andy Lu	2013-04-27	projection	mm	size	A4	scale	2:1
tolerance std	TOLERANCES UNLESS OTHERWISE SPECIFIED			eng	Andy Lu	2013-05-29			ecn no	rel level	Released	rev
ASME Y14.5				chr	---	---		product family				
surface	<input checked="" type="checkbox"/> linear <input type="checkbox"/> angular	0.X	± 0.3	appr	Peiming Zheng	2013-05-29			title PCI EXPRESS CARD EDGE ONE OPEN-END STB ASS'Y	www.fci.com cat. no.	Product - Customer Drw	sheet 3 of 4
ASME Y14.5		0.XX	± 0.20	0.XXX	± 0.100	0'		± 2'				

Pro/E File - REV C - 2009-08-20

NOTES:

- 1.MATERIAL:
HOUSING: HIGH TEMPERATURE NYLON, GLASS FILLED UL94V-0 RATED.
TERMINAL: COPPER ALLOY.
PLATING: 50u" NICKEL UNDERPLATE ALL OVER
CONTACT AREA PLATING - SEE PRODUCT NUMBER CODE
SOLDER TAIL: TIN OR TIN /LEAD(90/10)- SEE PRODUCT NUMBER CODE
NUMBER CODE 100u" MIN. OVER 50u" NICKEL.
METAL BOARD LOCKS: COPPER ALLOY.
FINISH: 100u" TIN OR TIN/LEAD(90/10) OVER 50u" NICKEL
UNDERPLATE SEE PRODUCT NUMBER CODE.
- 2.PRODUCT SPECIFICATION: GS-12-233.
①THE HORIZONTAL AXIS FOR THE HOLE PATTERN IS ESTABLISHED BY
A LINE THROUGH THE CENTER OF THE TWO Ø2.35 HOLES.
THE VERTICAL AXIS IS 90° TO THE HORIZONTAL AXIS, THROUGH THE CENTER
OF DATUM Z.
②NO TIE BAR PERMITTED FROM CARD EDGE TO LEADING EDGE OF PAD FOR PINS A1 AND PIN NUMBERS "F".
③CHAMFER EDGES MUST BE FREE OF CUTTING BURRS.
④FREQUENCY & LOCATION AT SUPPLIER DISCRETION. RIDGE MAY BE CONTINUOUS WITH NO BREAKS.
7.ROHS COMPATIBLE PRODUCT SPECIFICATIONS:
a - PLATING:
- "LF" MEANS THE PRODUCT IS LEAD-FREE, 2um MINIMUM MATTE TIN OVER 1.27um
MINIMUM NICKEL UNDERPLATE.
b - MANUFACTURING PROCESS COMPATIBILITY:
- THE HOUSING WILL WITHSTAND EXPOSURE TO 260°C±5°C TEMPERATURE FOR
10 SECONDS IN RE-FLOW APPLICATION, REFER TO GS-14-858 FOR OPERATING.

CONNECTOR	# POS	REF.	N	DIM "A"	DIM "B"	DIM "C"	"E"
8 PORT	98		37	38.65±0.13	56.00	40.15	37.00

PRODUCT NUMBER CODE

10124782 -X X X X X X X X

HOUSING COLOR OPTIONS
0-NATURAL
1-BLACK
PEGS OPTIONS
0-PLASTIC PEGS

LEAD FREE OPTION
LEAVE BLANK FOR TERMINAL PLATING 3,4,5
"LF" FOR TERMINAL PLATING OPTION 0,1,2

PACKAGING OPTIONS
T-SOFT TRAY PACKAGING
M-SOFT TRAY PACKAGING & MYLAR TAPE. SEE FIGURE 1

POS OPTIONS
2-98

TERMINAL PLATING OPTIONS

- 0-50u" Ni UNDERPLATE
30u" Au CONTACT AREA
100u" TIN TAIL AREA ----- COMPATIBLE RoHS
- 1-50u" Ni UNDERPLATE
15u" Au CONTACT AREA
100u" TIN TAIL AREA ----- COMPATIBLE RoHS
- 2-50u" Ni UNDERPLATE
GOLD FLASH CONTACT AREA
100u" TIN TAIL AREA ----- COMPATIBLE RoHS
- 3-50u" Ni UNDERPLATE
30u" Au CONTACT AREA
100u" TIN/LEAD TAIL AREA ----- INCOMPLIANT RoHS
- 4-50u" Ni UNDERPLATE
15u" Au CONTACT AREA
100u" TIN/LEAD TAIL AREA ----- INCOMPLIANT RoHS
- 5-50u" Ni UNDERPLATE
GOLD FLASH CONTACT AREA
100u" TIN/LEAD TAIL AREA ----- INCOMPLIANT RoHS

TAIL LENGTH OPTIONS

	DIM "D"	PCB THICKNESS
0	2.30 ±0.13	1.56±0.10
1	3.10 ±0.13	2.36±0.10
2	2.54±0.25	1.56±0.10
3	1.90±0.25	1.56±0.10



Copyright FCI.

spec ref	*	dr	Andy Lu	2013-04-27	projection		size	A4	scale	2:1
tolerance std	ASME Y14.5	eng	Andy Lu	2013-05-29	chr	---	ecn no			
surface	linear	appr	Peiming Zheng	2013-05-29	product family	EDGE CARD	rel level	Released		
ASME Y14.5	angular	0'	± 2'		title	PCI EXPRESS CARD EDGE ONE OPEN-END STB ASS'Y	dwg no	10124782	rev	A
		www.fci.com	cat. no.	-	Product - Customer Drw		sheet 4 of 4			

Proj File - REV C - 2009-08-09