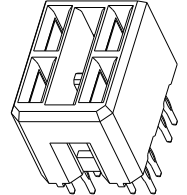
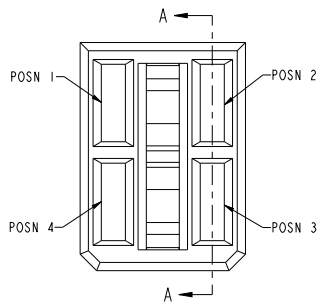
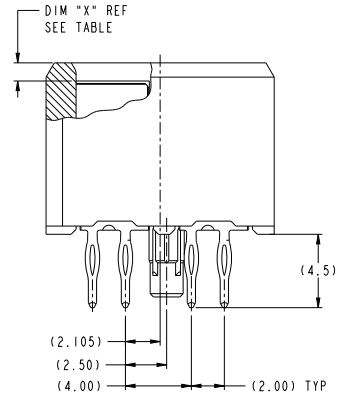
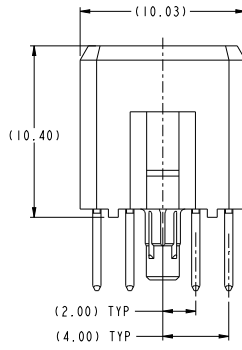
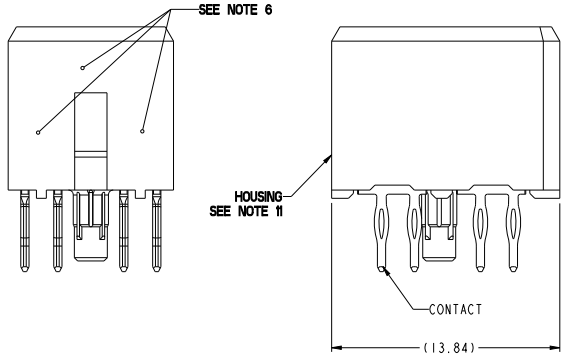


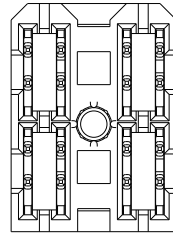
PRODUCT NUMBER ("LF" DENOTES LEAD-FREE)	CONTACT PLATING NOTE	MATING LENGTH, DIM "X"				ROHS COMPATIBILITY
		POSN 1	POSN 2	POSN 3	POSN 4	
10124646-4444P00	2a					N/A
10124646-4444P00LF	2b	1.10	1.10	1.10	1.10	SEE NOTE 9
10124646-5555P00	2a					N/A
10124646-5555P00LF	2b	2.60	2.60	2.60	2.60	SEE NOTE 9
10124646-4555P00	2a					N/A
10124646-4555P00LF	2b	1.10	2.60	2.60	2.60	SEE NOTE 9
10124646-5455P00	2a					N/A
10124646-5455P00LF	2b	2.60	1.10	2.60	2.60	SEE NOTE 9
10124646-5545P00	2a					N/A
10124646-5545P00LF	2b	2.60	2.60	1.10	2.60	SEE NOTE 9
10124646-5554P00	2a					N/A
10124646-5554P00LF	2b	2.60	2.60	2.60	1.10	SEE NOTE 9
10124646-4554P00	2a					N/A
10124646-4554P00LF	2b	1.10	2.60	2.60	1.10	SEE NOTE 9
10124646-4455P00	2a					N/A
10124646-4455P00LF	2b	1.10	1.10	2.60	2.60	SEE NOTE 9
10124646-5544P00	2a					N/A
10124646-5544P00LF	2b	2.60	2.60	1.10	1.10	SEE NOTE 9



SCALE 4:1



SECTION A-A



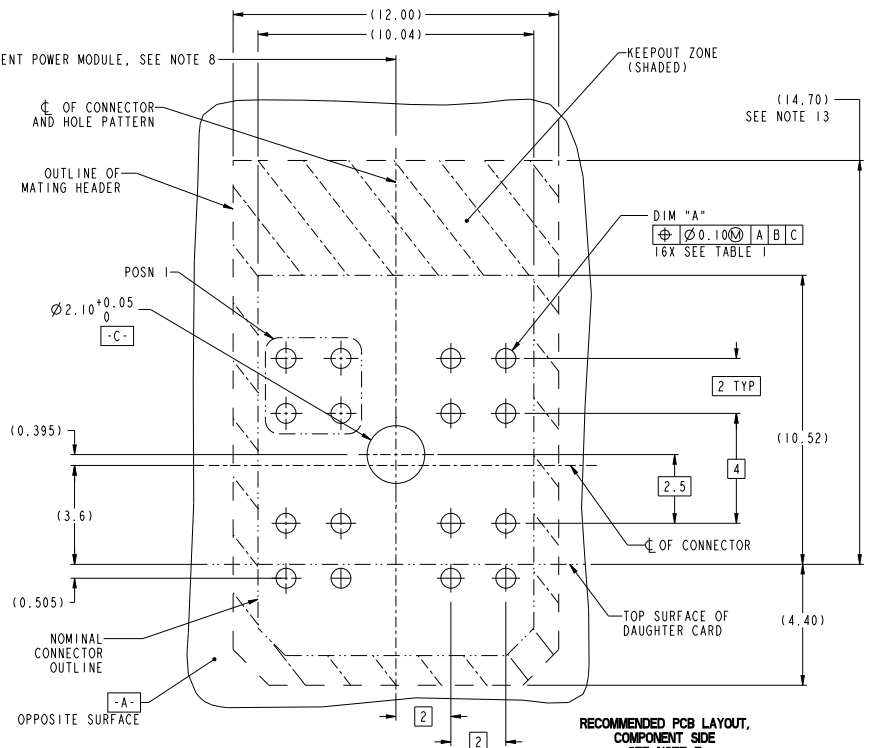
spec ref	GS-12-220	dr	J. P. P. P.	proj	proj	projection	MM	size	A2	scale	6:1
tolerance std	ASME Y14.5	eng	B. M. M.	chr		product family	2mm High Power	ecr no		rel level	Released
surface	linear	0.X	±0.3	0.XX	±0.1	FCI	RECEPTACLE ASSEMBLY, 2X2	part no	10124646	rev	A
ASME Y14.5	angular	0.XXX	±0.050	°	±2°	www.fcicom	AIRMAX POWER (PERFORMANCE BASED PLATING)	cat. no.		Product	Customer Draw
		PDS: Rev :A		STATUS: Released		Printed: Apr 12, 2013				sheet 1 of 2	

Copyright FCI

TOP LAYER DESCRIPTION	TABLE I PLATED THROUGH-HOLE REQUIREMENTS							
	DRILLED HOLE DIAMETER	COPPER THICKNESS	TIN-LEAD THICKNESS	NICKEL THICKNESS	GOLD THICKNESS	TIN THICKNESS	SILVER THICKNESS	FINISHED HOLE DIAMETER (DIM "A")
TIN-LEAD	0.81-0.86 (0.85 DRILL)	0.025 - 0.050	0.005 - 0.015	--	--	--	--	0.65 - 0.80
IMMERSION TIN	0.81-0.86 (0.85 DRILL)	0.025 - 0.050	--	--	--	0.9 - 1.5um	--	0.70 - 0.80
IMMERSION SILVER	0.81-0.86 (0.85 DRILL)	0.025 - 0.050	--	--	--	--	0.15 - 0.65um	0.70 - 0.80
COPPER (SEE NOTE 12)	0.81-0.86 (0.85 DRILL)	0.025 - 0.050	--	--	--	--	--	0.70 - 0.80
GOLD	0.81-0.86 (0.85 DRILL)	0.025 - 0.050	--	0.003 - 0.007	FLASH UP TO 0.0002	--	--	0.69 - 0.80

NOTES:

- CONNECTOR MATERIALS:
HOUSING: HIGH TEMPERATURE THERMOPLASTIC, BLACK
UL 94V-0 COMPLIANT
CONTACT: HIGH PERFORMANCE COPPER ALLOY
- a) CONTACT PLATING (LEADED):
PRESS-FIT TAIL: TIN-LEAD OVER NICKEL.
b) CONTACT PLATING (LEAD-FREE):
PRESS-FIT TAIL: MATTIE TIN OVER NICKEL.
- SEPARABLE INTERFACE: PERFORMANCE BASED PLATING, QUALIFIED TO MEET THE REQUIREMENT OF FCI PRODUCT SPEC GS-12-220 INCLUDING TELCORDIA GR-1217-CORE (NOV 1995) CENTRAL OFFICE TEST SEQUENCE
- PRODUCT SPECIFICATION: GS-12-220
- APPLICATION SPECIFICATION: GS-20-023
- PRODUCT MARKING (PRODUCT NUMBER & LOT CODE) ON HOUSING IN AREA SHOWN, EITHER SIDE.
- MINIMUM NOMINAL BOARD THICKNESS: 2.4mm
- REFER TO CUSTOMER DRAWING SKI0035911 FOR INFORMATION REGARDING PCB LAYOUT OF POWER AND GUIDE MODULES RELATIVE TO AIRMAX SIGNAL MODULES.
- PRODUCT MEETS EUROPEAN UNION DIRECTIVES AND OTHER COUNTRY REGULATIONS AS DESCRIBED IN FCI SPECIFICATION GS-22-008.
- PACKAGING MEETS FCI SPECIFICATION GS-14-920
- HOUSING COMPONENT WILL WITHSTAND EXPOSURE TO 260° PEAK TEMPERATURE FOR 60 SECONDS IN A CONVECTION, INFRA-RED OR VAPOR-PHASE REFLOW OVEN.
- COPPER PLATING THICKNESS AT CENTER OF VIA HOLE CAN BE NO MORE THAN 0.003 LESS THAN OTHER AREAS.
- KEEPOUT AREA APPLICABLE FOR HIGH PROFILE POWER HEADER WITH 14.70MM HEIGHT ABOVE TOP SURFACE OF DAUGHTER CARD. IT MAY BE 11.5MM IF A LOWER PROFILE HEADER IS USED.
- A Δ SYMBOL WILL BE NEXT TO ANY DIMENSION, VIEW, OR NOTE WHICH HAS BEEN MODIFIED WITH THE CURRENT DRAWING REVISION



RECOMMENDED PCB LAYOUT,
COMPONENT SIDE
SEE NOTE 7
SCALE 10:1

spec ref	GS-12-220	dr	J. P. Anderson	proj	proj	projection	MM	size	A2	scale	3:1
tolerance std	ASME Y14.5	eng	John Noh	proj	proj	product family		ecn no		rel level	Released
surface	linear	0.X	±0.3	0.XX	±0.1	0.XXX	±0.050				
ASME Y14.5	angular	°	±0.2								



RECEPTACLE ASSEMBLY, 2X2
AIRMAX POWER (PERFORMANCE BASED PLATING)
Product - Customer Draw
10124646
rev A
sheet 2 of 2

PDS: Rev :A STATUS:Released Printed: Apr 12, 2013

Copyright FCI