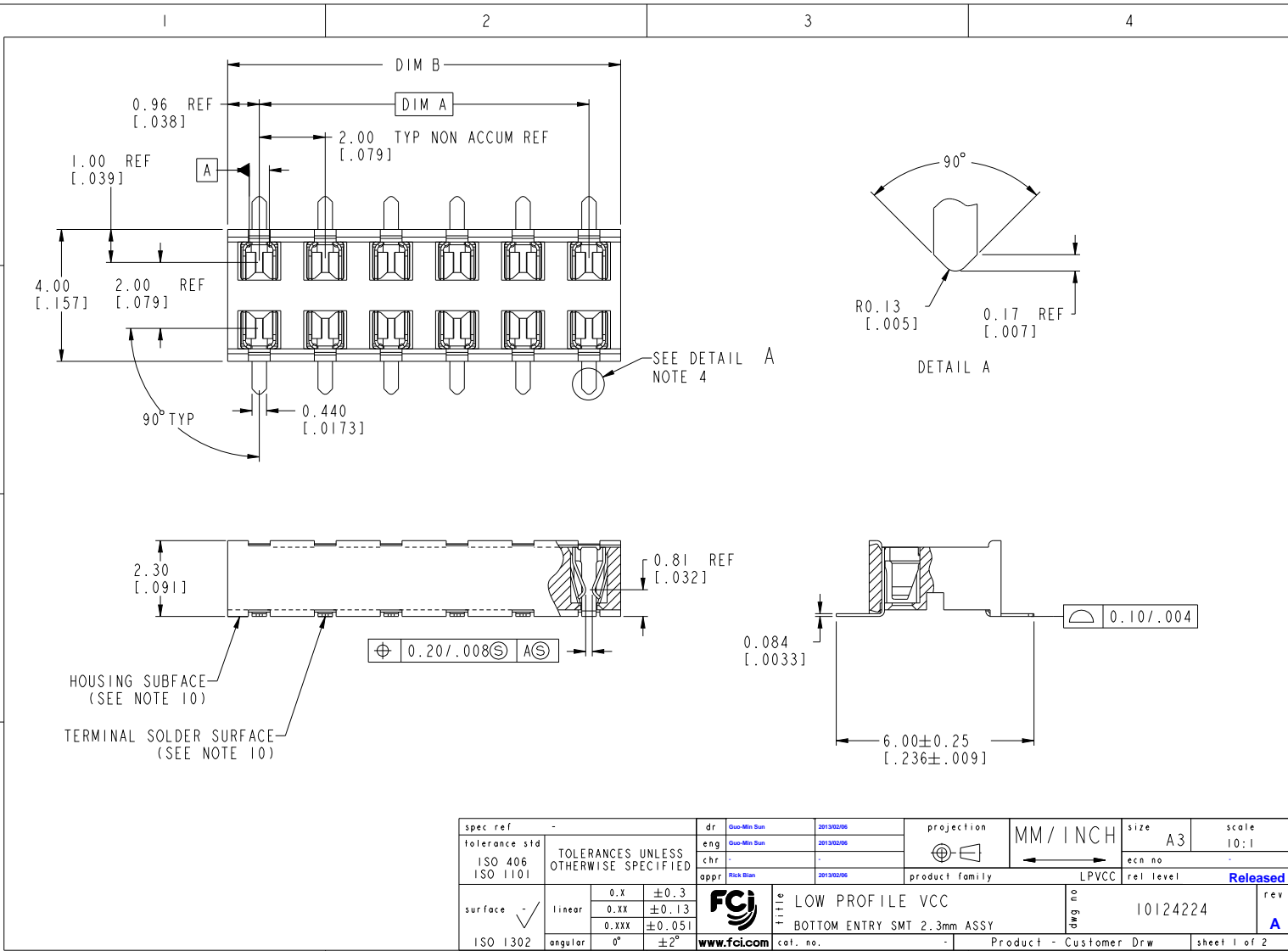


Copyright FCI



spec ref	-	dr	Guo-Min Sun	20130206	projection	MM / INCH	size	A3	scale	10:1
tolerance std	ISO 406 ISO 1101	TOLERANCES UNLESS OTHERWISE SPECIFIED		eng	Guo-Min Sun	20130206	ecm no	-	rel level	Released
surface	ISO 1302	linear	0.X ± 0.3 0.XX ± 0.13 0.XXX ± 0.051	chr	-	-	product family	LPVCC	rev	A
		angular	0° ± 2°	appr	Rick Blum	20130206	cat. no.	10124224	Product - Customer Drw	sheet 1 of 2

Prod File - Rev C - 2009-01-09

PDS: Rev :A STATUS:Released Printed: Feb 07, 2013

PRODUCT NO	POSITIONS	DIM. A	DIM. B
10124224-X04	2 X 2	2.00 / .079	3.92 / .154
-X06	2 X 3	4.00 / .158	5.92 / .233
-X08	2 X 4	6.00 / .236	7.92 / .312
-X10	2 X 5	8.00 / .315	9.92 / .391
-X12	2 X 6	10.00 / .394	11.92 / .469
-X14	2 X 7	12.00 / .472	13.92 / .548
-X16	2 X 8	14.00 / .551	15.92 / .627
-X18	2 X 9	16.00 / .630	17.92 / .706
-X20	2 X 10	18.00 / .709	19.92 / .784
-X22	2 X 11	20.00 / .787	21.92 / .863
-X24	2 X 12	22.00 / .866	23.92 / .942
-X26	2 X 13	24.00 / .945	25.92 / 1.020
-X28	2 X 14	26.00 / 1.024	27.92 / 1.099
-X30	2 X 15	28.00 / 1.102	29.92 / 1.178

⑩ TERMINAL SOLDER SURFACE MUST UNDER THE HOUSING SUBFACE 0-0.15mm.

CONTACT AREA PLATING OPTIONS	
0	=0.20um/8u"Au ON CONTACT.
1	=0.76um/30u"Au ON CONTACT.
3	=0.38um/15u"Au ON CONTACT.
4	=0.76um/30u"GXT ON CONTACT.
5	=0.38um/15u"GXT ON CONTACT.

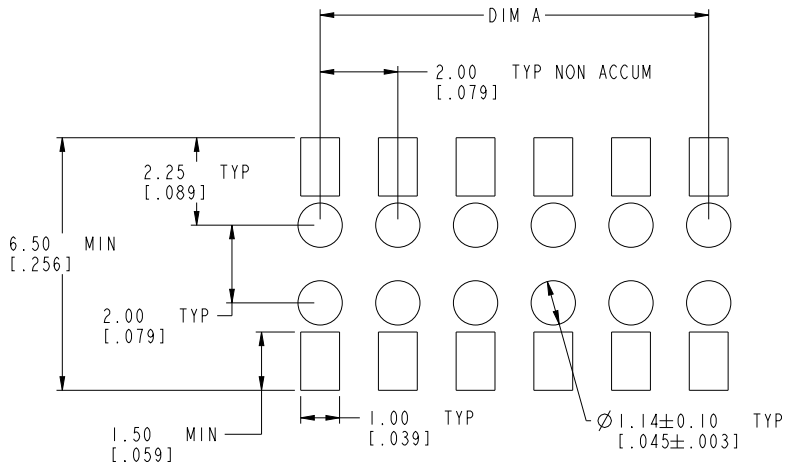
- NOTES:
 1. HOUSING MAT'L : HIGH TEMP PLASTIC.
 2. TERMINAL MAT'L : BeCu.
 3. TERMINAL RETENTION 0.5Kg/1.1 Lbs.
 4. 'V' CUT OPTIONAL - MANUFACTURING PROCESS OPTION.
 5. PRODUCT DESCRIPTION CODE:

XXXXX-X XXLF

LEAD FREE (7b) ⑨
 TOTAL POSITIONS
 PLATING AT CONTACT AREA
 BASE NUMBER

6. PACKAGING:
 (a) XXXXX-XXX ---STD PACKAGING IN TUBE.
 (b) XXXXX-XXXTR ---TAPE AND REEL (CONDUCTIVE)
 PACKAGING WITH PICK-UP CAP (SEE FIG 1).
 (c) XXXXX-XXXTRN ---TAPE AND REEL (CONDUCTIVE)
 PACKAGING WITHOUT PICK-UP CAP.
 (d) XXXXX-XXXCR ---TAPE AND REEL (NON-CONDUCTIVE)
 PACKAGING WITH PICK-UP CAP (SEE FIG 1).
 (e) XXXXX-XXXCRN ---TAPE AND REEL (NON-CONDUCTIVE)
 PACKAGING WITHOUT PICK-UP CAP.

- ⑦ SOLDER TAILS PLATING:
 a) SOLDER TAIL OF P/N: 10124224-XXX IS TIN/LEAD PLATED.
 b) SOLDER TAIL OF P/N: 10124224-XXXLF IS GOLD FLASH PLATED.
 8. THE HOUSING WILL WITHSTAND EXPOSURE TO 255°C PEAK TEMPERATURE FOR 10 SECONDS IN A CONVECTION, INFRA-RED OR VAPOR PHASE REFLOW OVEN.
 ⑨ THIS PRODUCT MEETS EUROPEAN UNION DIRECTIVES AND OTHER COUNTRY REGULATIONS AS DESCRIBED IN GS-22-008.



RECOMMENDED PAD LAYOUT



FIG. 1
NOTE 6 (b) & (d)

dr	Quo-Min Sun	20130206	projection	MM / INCH	size	A3	scale	10:1
eng	Quo-Min Sun	20130206			ecn no			
chr								
appr	Rick Blum	20130206	product family	LPVCC	rel level	Released		
www.fci.com		title		LOW PROFILE VCC		dwg no		10124224
				BOTTOM ENTRY SMT 2.3mm ASSY				rev
				Product - Customer Drw				A
				sheet 2 of 2				

PDS: Rev :A

STATUS:Released

Printed: Feb 07, 2013