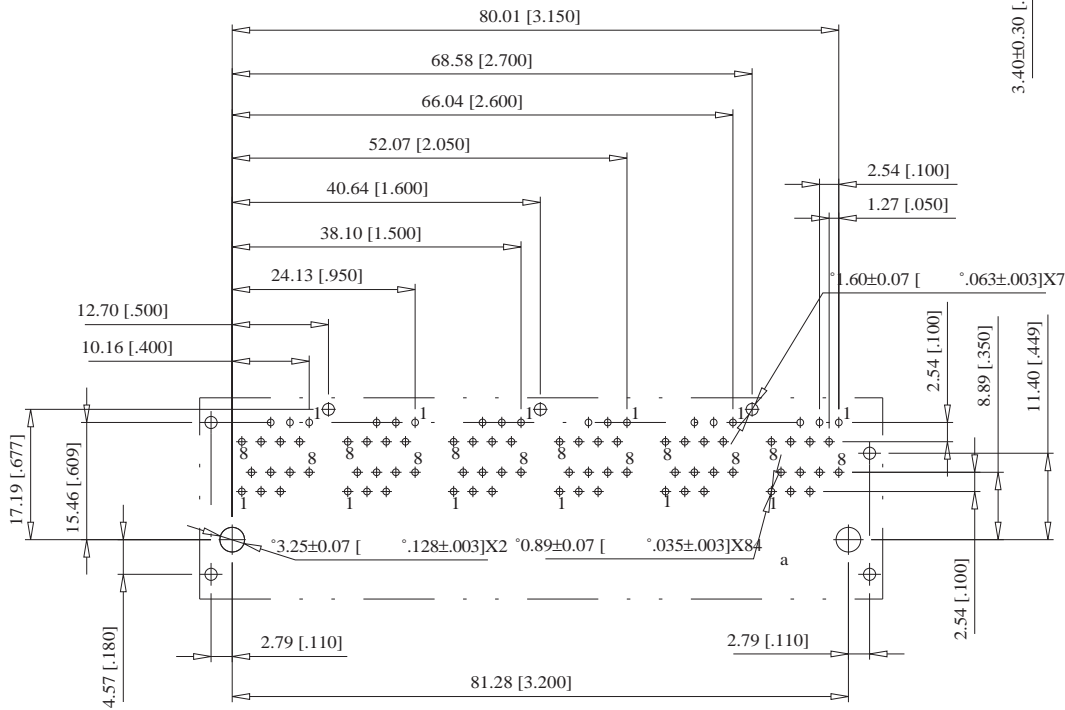


RECOMMENDED PCB LAYOUT (COMPONENT MOUNTING SIDE)
 EMPFOHLENER FUER LEITERPLATTE (BESTUECKUNGSSEITE)
 TOL ±0.05 [0.002] UNLESS NOTED



- NOTE 1: FOUR PANEL GROUND ON SIDES (GF9)
 NOTE 2: GROUNDING PIN BETWEEN EVERY OTHER PORT [P]
 NOTE 3: LEADS SHALL MEET MIL-STD-202, METHOD 208D FOR SOLDERABILITY.
 NOTE 4: NO CENTER SIDE GROUND FLANGE ON BOTH SIDES (S)

MATERIALS AND FINISH

HOUSING: GLASS FILLED POLYESTER UL 94 V-0 BLACK
 SHIELDING: Cu ALLOY, PLATED WITH Ni, 1.0µm [40µin] MIN
 CONTACTS: PHOSPHOR BRONZE
 CONTACT FINISH: Au, 0.8µm [30µin], OVER Ni
 TERMINAL FINISH: SnPb

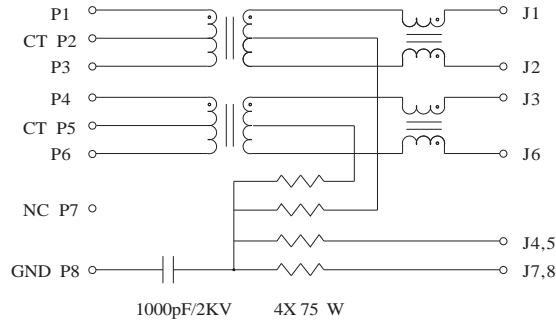
MECHANICAL CHARACTERISTICS
 DURABILITY: 1000 MATING CYCLES

ELECTRICAL CHARACTERISTICS
 CONTACT RESISTANCE: 30 MILLIOHMS MAX
 OPERATING TEMPERATURE: 0°C TO 70°C

Consider protection memo from DR 34

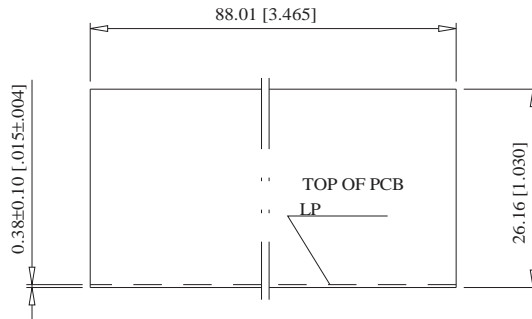
Information:		Tolerances	 All Dimensions in mm [in]	Scale	1.5:1	-
MJDFS-LG5-88-12SGF9P-M3D02						
All rights reserved. Only for information. To insure that this is the latest version of this drawing, please contact one of the ERNI companies before using.		Subject to modification without prior notice. Drawing will not be updated.		Designation MOD JACK - MJJM 8C7T, 2X6, INTEGRATED MAGNETICS		
ERNI Components CHESTER, VA U.S.A.		 1.5 = 1		133663		I
c	11JUN03			Group/Type	MJJM	
Rev.	Date					

ELECTRICAL SCHEMATIC 10/100 BASE TX - M3D02
ELEKTRISCHES DIAGRAMM



RECOMMENDED PANEL
CUTOUT

EMPFOHLENER FRONTPLATTEN AUSSCHNITT



MAGNETIC SPECIFICATIONS: @25°C

AUTO MDIX COMPATIBLE

URNS RATIO:

(P1-P3 : J1-J2) 1CT:1CT ± 3%

(P4-P6 : J3-J6) 1CT:1CT ± 3%

OCL (100KHz, 0.1 Vrms, 8mA)

(P1-P3, P4-P6) 350 μH MIN.

DCR (P1-P3, P4-P6) 0.9 OHMS MAX.

INSERTION LOSS: 0.1-100 MHz 1 dB MAX.

RETURN LOSS:

0.5-30 MHz -18dB MIN.

40 MHz -15.5 dB MIN.

50 MHz -13.6 dB MIN.

60-80 MHz -12 dB MIN.

CROSSTALK (0.1-100 MHz) -40 dB TYP.

CMR (0.1-100 MHz) -40 dB TYP.

ISOLATION: 1,500 Vrms

Information:	Tolerances	 All Dimensions in mm [in]	Scale	1.5:1
	MJDFS-LG5-88-12SGF9P-M3D02			
All rights reserved. Only for information. To insure that this is the latest version of this drawing, please contact one of the ERNI companies before using.	Subject to modification without prior notice. Drawing will not be updated.	 ERNI Components CHESTER, VA U.S.A.	Designation	
			MOD JACK - MJJM 8C7T, 2X6, INTEGRATED MAGNETICS	
c	11JUN03		133663	
Rev.	Date		Group/Type	MJJM

Consider protection memo from DR 34