



# *SAW Components*

*Data Sheet X 6867 D*





SAW Components

X 6867 D

Bandpass Filter

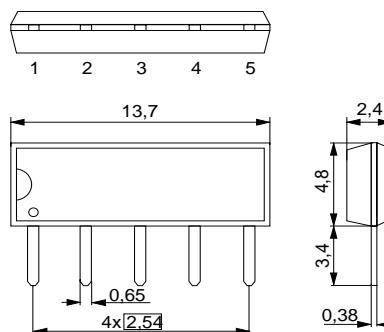
36,00 MHz

Data Sheet

Duroplast package SIP5D

**Features**

- IF filter for digital TV
- Optimized for cascade of two devices
- Optimized for balanced to balanced operation
- Standard IC package



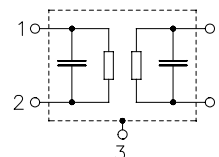
**Terminals**

- Tinned CuFe alloy

Dimensions in mm, approx. weight 0,5 g

**Pin configuration**

- 1 Input
- 2 Input
- 3 Chip carrier - ground
- 4 Output
- 5 Output



Type	Ordering code	Marking and package according to	Packing according to
X 6867 D	B39360-X6867-N201	C61157-A1-A21	F61074-V8049-Z000

**Maximum ratings**

Operable temperature range	$T_A$	-25/+65	°C	
Storage temperature range	$T_{stg}$	-40/+85	°C	
DC voltage	$V_{DC}$	5	V	between any terminals
AC voltage	$V_{pp}$	10	V	between any terminals


**SAW Components**
**X 6867 D**
**Bandpass Filter**
**36,00 MHz**
**Data Sheet**
**Characteristics**

Reference temperature:  $T_A = 25 \text{ }^\circ\text{C}$   
 Terminating source impedance:  $Z_S = 50 \text{ } \Omega$   
 Terminating load impedance:  $Z_L = 2 \text{ k}\Omega \parallel 3 \text{ pF}$

		min.	typ.	max.	
<b>Insertion attenuation</b>	$\alpha$				
Reference level for the following data	36,00 MHz	21,1	22,6	24,1	dB
<b>Amplitude ripple (p-p)</b>	$\Delta\alpha$				
	32,35 ... 39,65 MHz	—	1,0	—	dB
<b>Pass bandwidth</b>					
$\alpha_{rel} \leq 1,5 \text{ dB}$	$B_{1,5dB}$	—	7,8	—	MHz
$\alpha_{rel} \leq 3 \text{ dB}$	$B_{3dB}$	—	8,1	—	MHz
$\alpha_{rel} \leq 15 \text{ dB}$	$B_{15dB}$	—	9,0	—	MHz
$\alpha_{rel} \leq 30 \text{ dB}$	$B_{30dB}$	—	9,5	—	MHz
<b>Relative attenuation</b>	$\alpha_{rel}$				
	31,65 MHz	7,0	8,7	—	dB
	40,35 MHz	7,0	10,7	—	dB
	31,30 MHz	21,5	24,5	—	dB
	40,70 MHz	21,0	27,0	—	dB
Lower sidelobe	25,00 ... 31,00 MHz	33,0	38,0		
Upper sidelobe	41,00 ... 45,00 MHz	31,0	36,0		
<b>Reflected wave signal suppression</b>					
1,2 $\mu\text{s}$ ... 6,0 $\mu\text{s}$ after main pulse (test pulse 250 ns, carrier frequency 36,00 MHz)		42,0	46,0	—	dB
<b>Feedthrough signal suppression</b>					
1,3 $\mu\text{s}$ ... 1,2 $\mu\text{s}$ before main pulse (test pulse 250 ns, carrier frequency 36,00 MHz)		—	50,0	—	dB
<b>Group delay ripple (p-p)</b>	$\Delta\tau$				
	32,35 ... 39,65 MHz	—	50	—	ns
<b>Impedance at 36,00 MHz</b>					
Input: $Z_{IN} = R_{IN} \parallel C_{IN}$		—	4,0 $\parallel$ 11,2	—	k $\Omega$ $\parallel$ pF
Output: $Z_{OUT} = R_{OUT} \parallel C_{OUT}$		—	3,5 $\parallel$ 3,0	—	k $\Omega$ $\parallel$ pF
<b>Temperature coefficient of frequency</b>	$TC_f$	—	-72	—	ppm/K



SAW Components

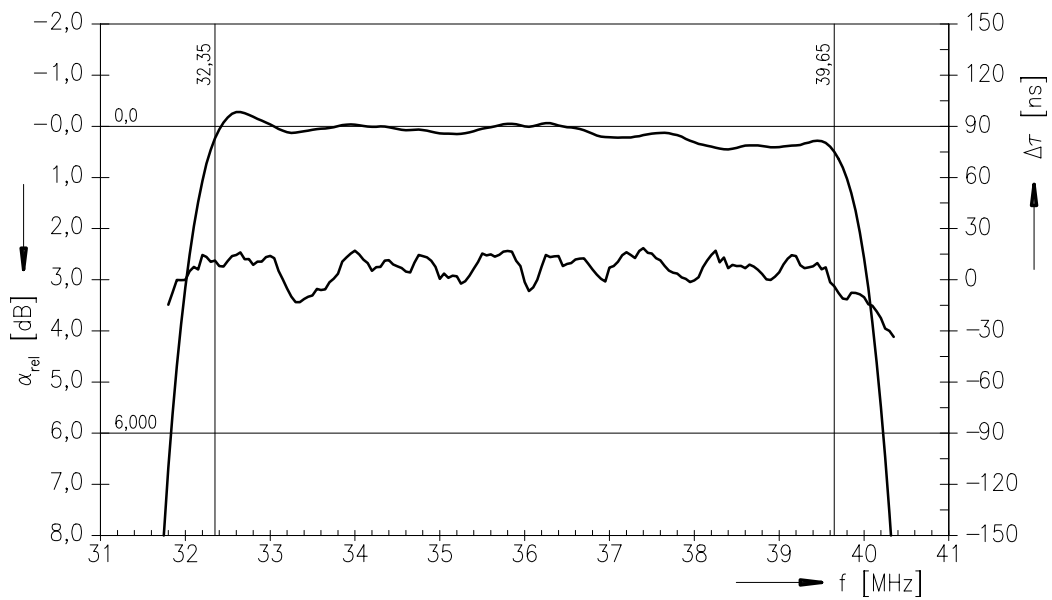
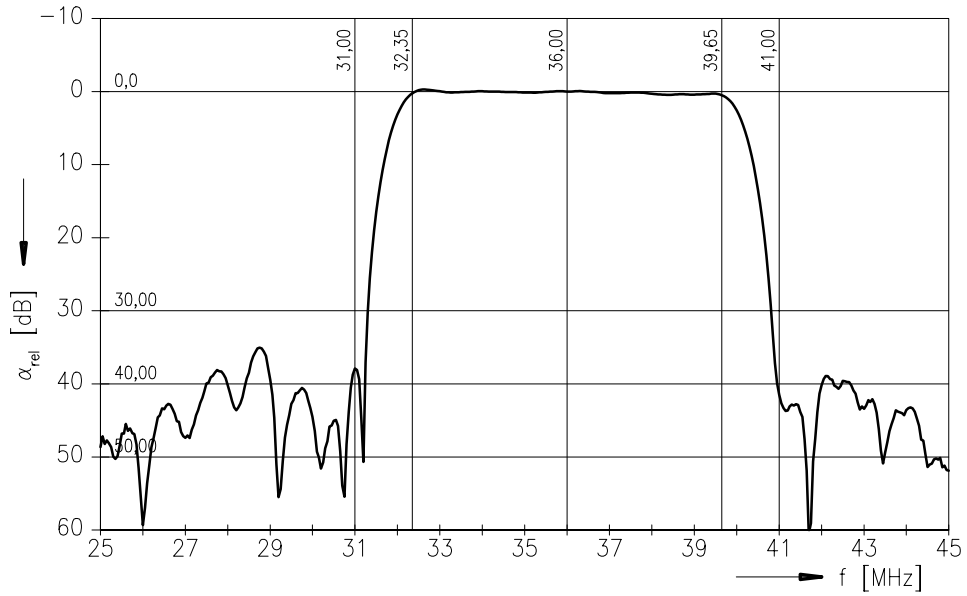
X 6867 D

Bandpass Filter

36,00 MHz

Data Sheet

Frequency response





SAW Components

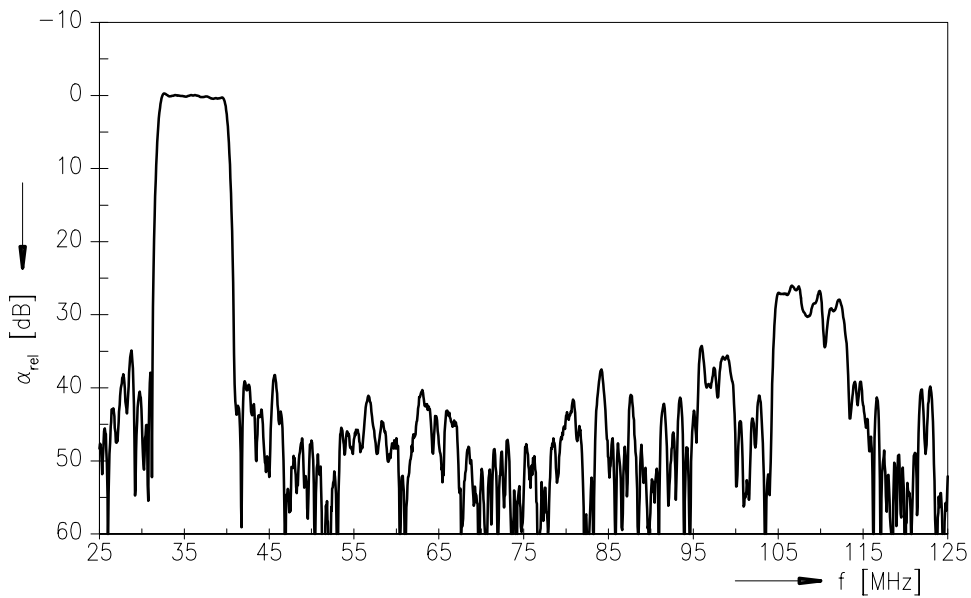
X 6867 D

Bandpass Filter

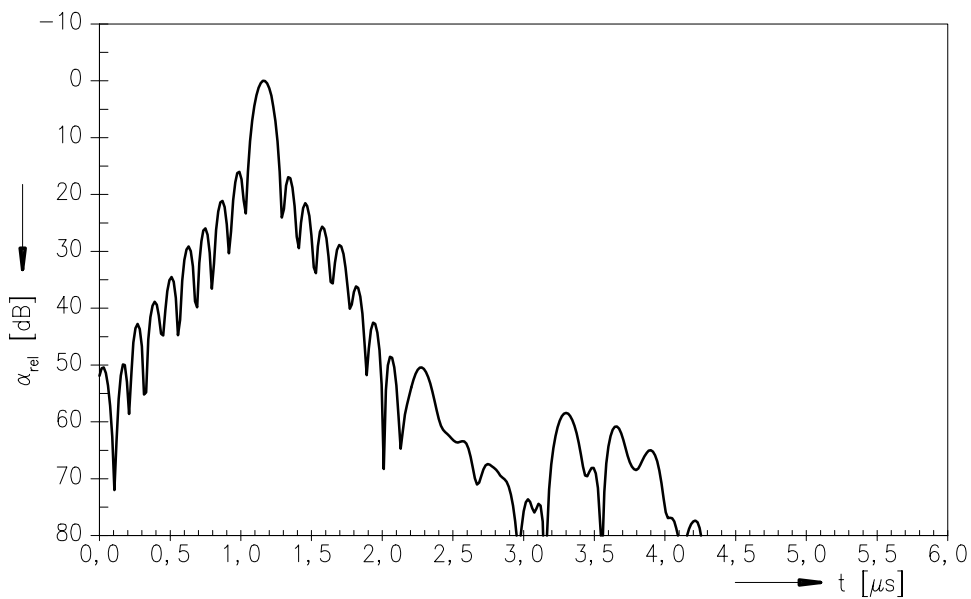
36,00 MHz

Data Sheet

Frequency response



Time domain response





**SAW Components**

**X 6867 D**

**Bandpass Filter**

**36,00 MHz**

Data Sheet

**Published by EPCOS AG**

**Surface Acoustic Wave Components Division, SAW CE MM PD**

**P.O. Box 80 17 09, 81617 Munich, GERMANY**

© EPCOS AG 2003. Reproduction, publication and dissemination of this brochure and the information contained therein without EPCOS' prior express consent is prohibited.

Purchase orders are subject to the General Conditions for the Supply of Products and Services of the Electrical and Electronics Industry recommended by the ZVEI (German Electrical and Electronic Manufacturers' Association), unless otherwise agreed.

This brochure replaces the previous edition.

For questions on technology, prices and delivery please contact the Sales Offices of EPCOS AG or the international Representatives.

Due to technical requirements components may contain dangerous substances. For information on the type in question please also contact one of our Sales Offices.