



OVERVIEW:

Optima's standard cabinet offering for industrial applications, the RA and RC are designed to exceed the industry standards for test instrumentation, industrial controls & electronic applications. Utilizing a field proven extrusion based frame design the Rseries has the flexibility to create custom configurations from standard options. With a choice of bezel styles and a wide range of options for; frame size, mounting rails, base, top panel, bottom panel, side panel, doors, color and accessories the cabinet can be built with features and appearance desired.

RC SERIES FRAME (BEZEL) DESIGN

This extra-rugged classic is in world-wide use. The aluminum construction features "shadow-box" shaped tubular bezels, connected with very rigid corner members. Doors fit nearly flush, neatly within the bezel frame, hence the "shadow box" look.



RA SERIES FRAME (BEZEL) DESIGN

Structurally, this series is identical to the RC series, but with a different frame appearance. The aluminum tubular bezels are flush with front panel surfaces, and feature a wide recessed channel. Doors are surface mounted to extend beyond the bezel frame.



RB SERIES FRAME (BEZEL) DESIGN

Are Ideal for cable and broadcast applications, or where dust particle gasketing is required, and where doors are not required.



ADVANTAGES:

- Attractive, professional bezel designs: "shadow box" (RC) or "flush" (RA).
- Modular design reduces installation, upgrade and service time.
- Custom design options, standard platform and cost
- Wide range of industry standard sizes and options.
- Selection of contemporary color choices. Custom color matching also available.
- Superior strength-to-weight ration.
- Proven paint adhesion provides durable aesthetics.
- Free assembly. Optima expertly, assembles your cabinet at no charge.

R SERIES - INDUSTRIAL CABINETS



DESCRIPTION

Utilizing an extrusion based frame system, Optima's R Series of industrial cabinets maintain a professional appearance while delivering functionality and durability. Designed to perform in the most demanding applications, the bezels are rated to 6600lb static load and corrosion resistance is achieved via durable acrylic coating based on thermo setting, cross linking resins. A wide selection of doors, side panels, top and bottom covers combined with a family of accessory items complete the range.

FEATURES:

- Modular extruded, aluminum frame (6063-T5 AL)
- Solid billeted aluminum corners (four way crimped)
- Bezel tested to 6,600lbs static load (2,000lb rated)
- Standard Sizes
 - Widths: 19", 23" and 24"
 - Heights: 12U, 16U, 20U, 24U, 30U, 35U, 40U, 44U (customs available)
 - Depths: 24", 30", 36", 42"
- Independent, removable side, top panel, bottom panel and doors
- Integrated cable management, power conditioning and cooling options
- Phosphate, pre-treating and durable acrylic coating based on thermo setting, cross-linking resins.
- Wide range of std. body and trim color options

SCOPE OF SUPPLY:

- Basic cabinet to include: 1 x frame, 2 x mounting rails (pairs, with 10A clip nuts and panel screws), 1 x base, 1 x top panel, painted and assembled.



1,2 FRAME STYLE

RC > RC Series
RA > RA Series
RB > RB Series
RE > RE Series (radius edge)
ZZ > Custom

3,4 FRAME HEIGHT

21 > 12U (21.12" / 536mm)
28 > 16U (28.12" / 714mm)
35 > 20U (35.12" / 892mm)
42 > 24U (42.12" / 1069mm)
52 > 30U (52.12" / 1336mm)
61 > 35U (61.38" / 1559mm)
70 > 40U (70.12" / 1781mm)
77 > 44U (77.12" / 1958mm)
ZZ > Custom

5,6 FRAME WIDTH

19 > 19" (17.81" / 452.4mm)
23 > 23" (21.81" / 554.0mm)
24 > 24" (22.81" / 579.4mm)
ZZ > Custom

7,8 FRAME DEPTH

24 > 24" (609.6mm)
30 > 30" (762.0mm)
36 > 36" (914.4mm)
42 > 42" (1066.8mm)
ZZ > Custom

9 MOUNTING RAIL POSITION

S > Standard
F > Recessed Front
R > Recessed Rear
B > Recessed Front & Rear
X > Not installed
Z > Custom

10,11 MOUNTING RAILS

SR > U shape - 14GA, std. (SR)
UT > U shape - 11GA, tapped (UTR)
PR > L shape - 11GA, punched (PR)
TR > L shape - 11GA, tapped (TR)
TI > Telco - 40U & 44U (TIR)
RE > Reducer rail (RED)
EU > IEC 60297-2, 12 gauge
XX > Not installed
ZZ > Custom

12,13 BASE

BS > Standard (BS)
BC > Standard w/casters
BL > Standard w/levelers
CL > Standard w/both C&L
CE > Cable egress (CE)
EL > Cable egress w/levelers
EC > Cable egress w/casters
EB > Cable egress w/both C&L
PC > Caster Plate w/casters
SS > Standard w/stabilizer
XB > Not installed (XB)
ZZ > Custom

14,15 TOP PANEL

TS > Solid (TS)
PT > Perforated (PT)
PG > Pagoda (PG)
CE > Cable egress
TF > Fan (TF)
XT > Not installed (XT)
ZZ > Custom

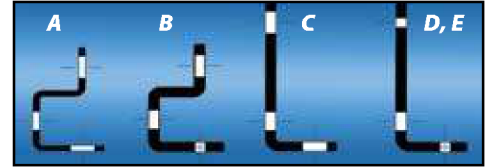
16 BODY COLOR

1 > Black (207)
2 > Sky Blue (210)
3 > White (931)
4 > Deep Charcoal (209)
5 > Light Gray (201)
6 > Beige (205)
Z > Custom

Items to be ordered separately: bottom panel, side panels, doors, and accessories (denote "installed" and location for free integration to cabinet assembly). For a single, fully configured and assembled cabinet part number see page 6 or consult factory.

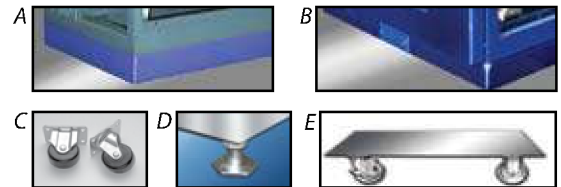
MOUNTING RAIL OPTIONS - for more detailed description /configurator see page 39

- A) Standard (SR) 14 gauge (.075" THK.) CRS
- B) Heavy-duty Tapped 10-32 (UT) 11 gauge (.119" THK.) CRS
- C) Heavy-duty Punched (PR) 11 gauge (.119" THK.) CRS
- D) Heavy-duty Tapped 10-32 (TR) 11 gauge (.119" THK.) CRS
- E) Telecom Industry (TI) 11 gauge (.119" THK.) CRS
- F) IEC 60297-2 (Square hole) 12/14 gauge (details page 38)



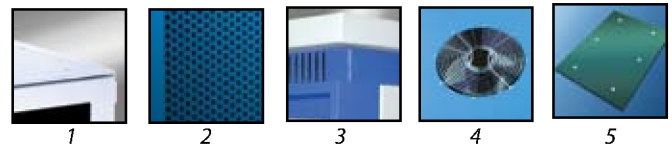
BASE OPTIONS - for more detailed description /configurator see page 38

- A) Solid
- B) Cable Egress
- C) Casters
- D) Levelers
- E) Caster Plate



TOP PANEL OPTIONS - for more detailed description /configurator see page 37

- 1) Solid Top (TS)
- 2) Perforated Top (PT)
- 3) Pagoda (PG)
- 4) Fan Cut-Out (TF)
- 5) Solid Quick-release Top (SQ) - CUSTOM



BOTTOM PANEL OPTIONS - for more detailed description /configurator see page 38



1,2 BOTTOM PANEL TYPE	3,4 VENTING	5,6 WIDTH	7,8 DEPTH	9 COLOR
RO > Unshielded (RA / RC) ZZ > Custom	PS > Solid PP > Perforated CE > Cable Egress ZZ > Custom	19 > 19" (17.81" / 452.4mm) 23 > 23" (21.81" / 554.0mm) 24 > 24" (22.81" / 579.4mm)	24 > 24" (609.6mm) 30 > 30" (762.0mm) 36 > 36" (914.4mm) 42 > 42" (1066.8mm)	1 > Black (207) 2 > Sky Blue (210) 3 > White (931) 4 > Deep Charcoal (209) 5 > Light Gray (201) 6 > Beige (205) Z > Custom

SIDE PANEL - for more detailed description /configurator see page 37



1,2 SIDE PANEL TYPE	3,4 STYLE	5,6 HEIGHT	7,8 DEPTH	9 COLOR
RO > Unshielded (RA / RC Frame) ZZ > Custom	SF > Fixed SL > Lift Off	21 > 12U (21.12" / 536mm) 28 > 16U (28.12" / 714mm) 35 > 20U (35.12" / 892mm) 42 > 24U (42.12" / 1069mm) 52 > 30U (52.12" / 1336mm) 61 > 35U (61.38" / 1559mm) 70 > 40U (70.12" / 1781mm) 77 > 44U (77.12" / 1958mm) ZZ > Custom	24 > 24" (609.6mm) 30 > 30" (762.0mm) 36 > 36" (914.4mm) 42 > 42" (1066.8mm) ZZ > Custom	1 > Black (207) 2 > Sky Blue (210) 3 > White (931) 4 > Deep Charcoal (209) 5 > Light Gray (201) 6 > Beige (205) Z > Custom

DOOR OPTIONS - for more detailed description /configurator see page 35



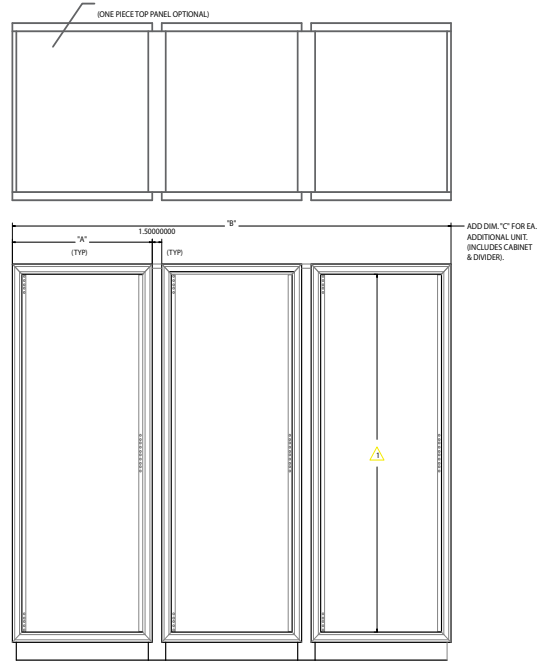
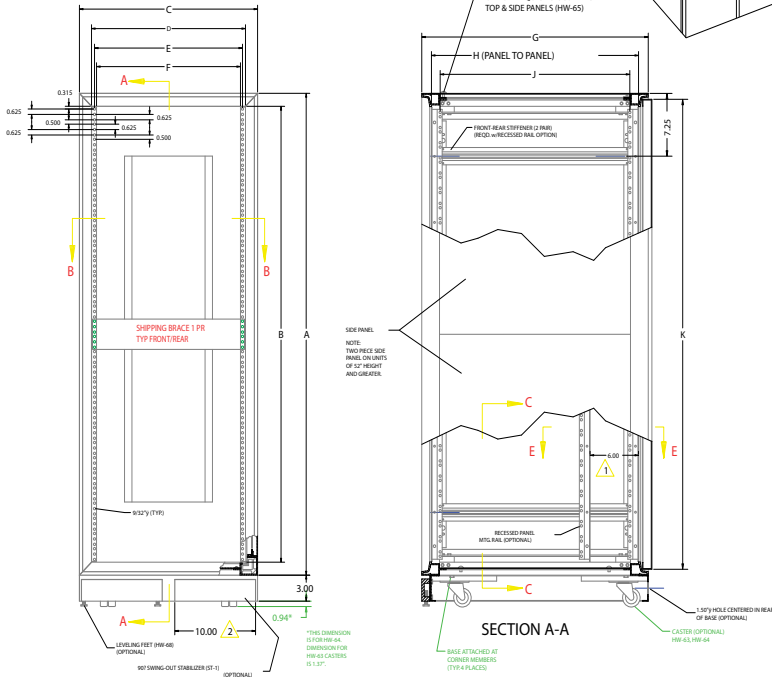
1,2 DOOR TYPE	3,4 HEIGHT	5,6 WIDTH	7,8 HINGE SIDE	9,10 VENTILATION	11 COLOR
DA > Unshielded, RA Series (DA) DX > Unshielded, RC Series (D) AP > Unshielded, RA Acrylic (DAP) DP > Unshielded, RC Acrylic (DP) ZZ > Custom	21 > 12U (21.12" / 536mm) 28 > 16U (28.12" / 714mm) 35 > 20U (35.12" / 892mm) 42 > 24U (42.12" / 1069mm) 52 > 30U (52.12" / 1336mm) 61 > 35U (61.38" / 1559mm) 70 > 40U (70.12" / 1781mm) 77 > 44U (77.12" / 1958mm) ZZ > Custom	19 > 19" (17.81" / 452.4mm) 23 > 23" (21.81" / 554.0mm) 24 > 24" (22.81" / 579.4mm) ZZ > Custom	LH > Left Hinged RH > Right Hinged	XX > Solid TV > Vented Top BV > Vented Bottom FV > Vented Top & Bottom PV > Perforated Insert	1 > Black (207) 2 > Sky Blue (210) 3 > White (931) 4 > Deep Charcoal (209) 5 > Light Gray (201) 6 > Beige (205) Z > Custom

For additional accessories and/or options, refer to pages 40 thru 52

R SERIES - TECHNICAL

NOTE:

- ⚠ STANDARD RECESS DISTANCE: 6.00
- ⚠ FOR 19" & 24" WIDTHS, USE ST-1 STABILIZER.
- ⚠ MAXIMUM SAFE SHELF LOAD: 100 lbs. @ 12" FROM FRONT PANEL.
- ⚠ DIMENSIONS ARE FOR REFERENCE ONLY.
- ⚠ TOLERANCE ON OVERALL DIMS: ±0.030
- ⚠ TOLERANCE ON MOUNTING RAILS PER EIA - 310.



- NOTE:**
- ⚠ ANY STD. SIZE OPTIMA "R" SERIES CABINET MAY BE INCORPORATED INTO A MULTI-BAY SYSTEM. (DIMENSIONS & DETAILS ARE SHOWN ON SHTS. 1 THRU 4).
 - ⚠ MULTI-BAY SYSTEMS ARE ASSEMBLED USING THE "KP" SERIES CONNECTOR KIT CONSISTING OF:
 - 1 - DIVIDER CHANNEL (14 GA. PAINTED), 2 - TOP FILLER PANEL (14 GA. PAINTED),
 - 3 - HARDWARE (HW-53-77730-SCREW, 10A x 5/8 PHIL. PAN HEAD).
 CABINET SYSTEMS MAY BE ASSEMBLED IN THE FIELD EASILY WITH THESE KITS.

