

Funk-Entstörfilter

im runden Metallgehäuse mit Gewindezapfen

Radio-Interference Suppression Filters

encapsulation: round metal case with threaded stud

Filtres d'antiparasitage

boîtier métallique ronde avec vis

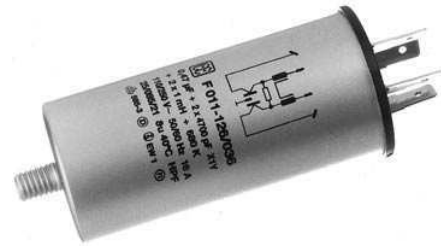


Bild I
Fig. I
ill. I

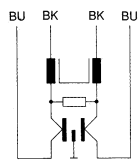
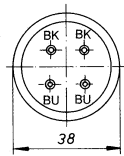
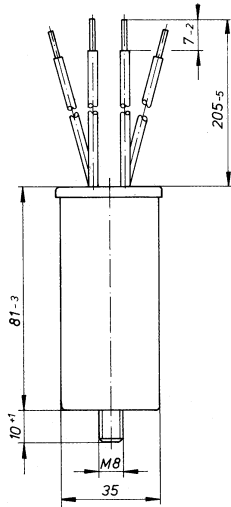


Bild II
Fig. II
ill. II

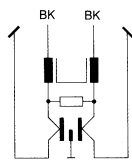
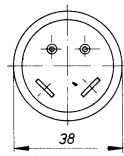
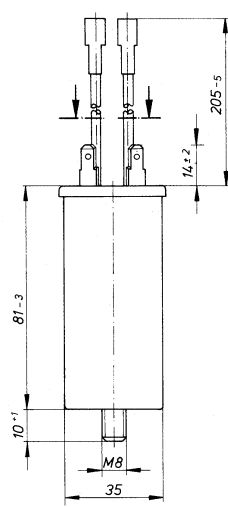
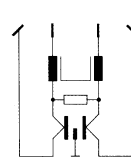
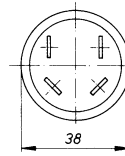
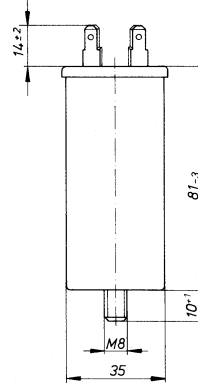


Bild III
Fig. III
ill. III



Nennstrom Rated current Courant nominal	Nennkapazität Rated capacitance Capacité nominale	Nenninduktivität Rated inductance Inductance nominale	Teile-Nr. / Part number / Référence		
			Bild I, Fig. I, ill. I	Bild II, Fig. II, ill. II	Bild III, Fig. III, ill. III
16 A	0,47 µF + 2 x 4700 pF X1Y2	2 x 1 mH	F011-126/059	F011-126/032	F011-126/036
16 A	0,47 µF + 2 x 10000 pF X1Y2	2 x 500 µH	F011-126/359	F011-126/063	F011-126/336
16 A	0,47 µF + 2 x 20000 pF X1Y2	2 x 300 µH	F011-126/459	F011-126/073	F011-126/436
Weitere Kapazitäts- und Induktivitätswerte auf Anfrage Other values upon request / D'autres capacités et inductances sur demande					

Nennspannung: AC 110/250 V 50/60 Hz
 Kapazitätsabweichung: ± 20%
 Kondensatorenklasse: X1Y2
 Induktivitätsabweichung: -30% / +50%
 Entladewiderstand: 680 K
 Ausführung: Metallbecher mit Gewindezapfen
 ähnlich DIN 41116

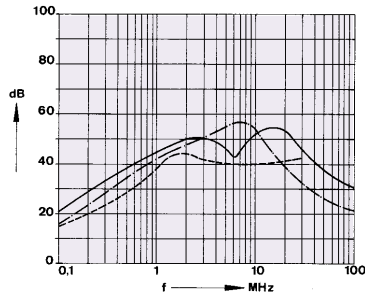
Klimakategorie:
Anschlüsse:

25/100/21-C nach IEC 60068-1
 Bild I : Cu-Litze Typ H07V-K 2,5 mm²
 Bild II : Cu-Litze Typ H07V-K 2,5 mm²
 konfektioniert mit Steckhülsen 6,3
 Bild III: Flachstecker 6,3 x 0,8 mm

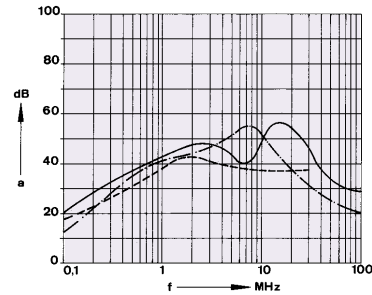
Rated voltage: AC 110/250 V 50/60 Hz
 Capacitance tolerance: $\pm 20\%$
 Capacitor class: X1Y2
 Inductance tolerance: $-30\% / +50\%$
 Discharge resistor: 680 K
 Encapsulation: metal can with threaded stud
 Climatic category: 25/100/21-C to IEC 60068-1
 Connections: Fig. I : copper wire H07V-K 2.5 mm²
 Fig. II : copper wire H07V-K 2.5 mm²
 complete with connectors 6.3
 Fig. III: fastons 6.3 x 0.8 mm

Tension nominale: c.a. 110/250 V 50/60 Hz
 Tolérances des capacités: $\pm 20\%$
 Classes des condensateurs: X1Y2
 Tolérances des inductances: $-30\% / +50\%$
 Résistance de décharge: 680 K
 Boîtier: boîtier métallique avec vis
 Catégorie climatique: 25/100/21-C selon IEC 60068-1
 Connexions: ill. I : fil cuivre H07V-K 2,5 mm²
 ill. II : fil cuivre H07V-K 2,5 mm²
 confectionné avec
 connecteurs 6,3
 ill. III: cosses plaques 6,3 x 0,8 mm

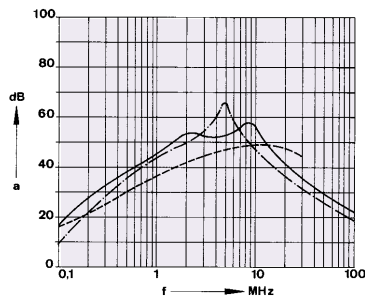
Prüfzeichen:  EN 133200 \uparrow max. 85°C
 Approvals:
 Homologations:



F011-126/032, F011-126/036
F011-126/059



F011-126/063, F011-126/336
F011-126/359



F011-126/073, F011-126/436
F011-126/459

Einfügungsdämpfung (Richtwerte), Messung im 50 Ω -System
 Insertion loss (approx. values), measured in 50 Ω -system
 Affaiblissement d'insertion (valeurs indicatives), Mesurage dans le circuit 50 Ω

- | unsymmetrische Messung, Abschluss des Nachbarzweiges
Non-symmetric measurement
Mesurage non-symétrique
- | asymmetrische Messung, beide Zweige parallel (common mode)
Asymmetric measurement (common mode)
Mesurage asymétrique (common mode)
- | symmetrische Messung (differential mode)
Symmetric measurement (differential mode)
Mesurage symétrique (differential mode)