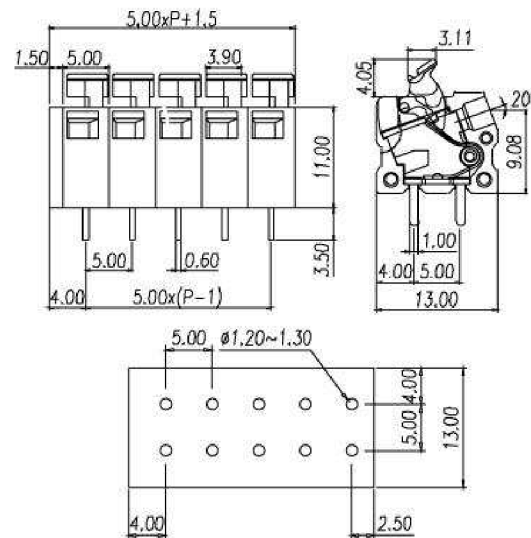
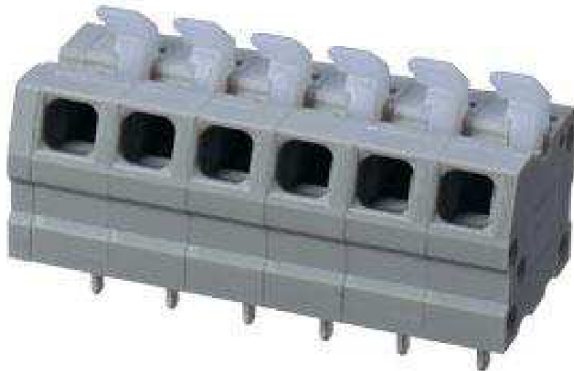



# Mini type, simple type cage clamp terminal blocks / 0137 series



## 0137-12



**Pitch: 5.00mm**

Approval		
Technical Data	UL	IEC
Rated voltage	300V	
Rated current	10A	
Conductor cross-section, solid (AWG/ mm <sup>2</sup> )	26~14 /	
Conductor cross-section, flexible (AWG/ mm <sup>2</sup> )	26~16 /	
Rated surge voltage (UL/IEC/Max.)	1.6 / / KV	
Torque (N-m)		
Screw		
Wire strip length	9mm	
<b>Pole</b>	<b>Cat. No.</b>	
02	0137-1202	
:	:	
:	:	
03	0137-1224	

TEL: +886-2-2908-0614

FAX: +886-2-2908-8549

E-mail: info@dinkle.com.tw