

# DELPHI SERIES



## FEATURES

- Efficiency up to 86%
- Industry standard form factor and pinout
- Size:  
31.8 x 20.3 x 10.2mm (1.25" x 0.80" x 0.40")
- Input: 12V, 24V (2:1)
- Output: 3.3, 5, 12, 15,  $\pm 5$ ,  $\pm 12$ ,  $\pm 15$ V
- Low ripple and noise
- 1500V isolation
- Short circuit protection
- UL 94V-0 Package Material
- ISO 9001 and ISO14001 certified manufacturing facility
- CSA 60950-1 Recognized

## Delphi DIW3000 Series DC/DC Power Modules: 12, 24Vin, 5~6W DIP

The Delphi DIW3100, 12V and 24V, 2:1 wide input, single or dual output, DIP form factor, isolated DC/DC converter is the latest offering from a world leader in power systems technology and manufacturing — Delta Electronics, Inc. The DIW3100 series operate from 12V or 24V(2:1) and provides 3.3V, 5V, 12V, or 15V of single output or  $\pm 5$ V,  $\pm 12$ V, or  $\pm 15$ V of dual output in an industrial standard, plastic case encapsulated DIP package (body size: 1.25"x 0.80"x0.40"). This series provides up to 6W of output power with 1500V isolation and a typical full-load efficiency up to 86%. With creative design technology and optimization of component placement, these converters possess outstanding electrical and thermal performance, as well as extremely high reliability under highly stressful operating conditions.

## OPTIONS

## APPLICATIONS

- Industrial
- Transportation
- Process/ Automation
- Telecom
- Data Networking

DATASHEET  
DS\_DIW3100\_12032008

  
Delta Electronics, Inc.

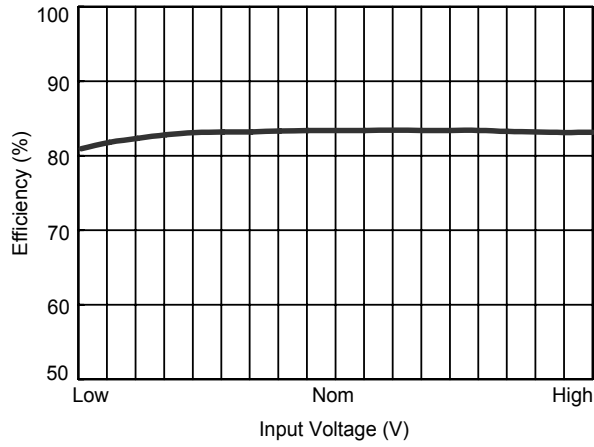
# TECHNICAL SPECIFICATIONS

T<sub>A</sub> = 25° C, airflow rate = 0 LFM, nominal Vin, nominal Vout, resistive load unless otherwise noted.

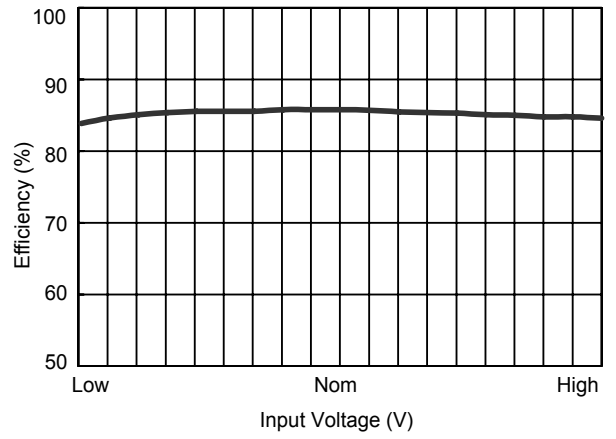
PARAMETER	NOTES and CONDITIONS	DIW3100 (Standard)			
		Min.	Typ.	Max.	Units
<b>ABSOLUTE MAXIMUM RATINGS</b>					
Input Voltage					
Transient	12V input model, 1000ms	-0.7		25	Vdc
Transient	24V input model, 1000ms	-0.7		50	Vdc
Internal Power Dissipation				2500	mW
Operating Temperature	Ambient	-40		85	°C
	Case	-40		100	°C
Storage Temperature		-40		125	°C
Humidity				95	%
Lead Temperature in Assembly	1.5mm from case for 10 seconds			260	°C
Input/Output Isolation Voltage		1500			Vdc
<b>INPUT CHARACTERISTICS</b>					
Operating Input Voltage	12V model	9	12	18	Vdc
	24V model	18	24	36	
Turn-On Voltage Threshold	12V model	4.5	6	8	Vdc
	24V model	8	12	16	Vdc
Turn-Off Voltage Threshold	12V model	---	---	8	Vdc
	24V model	---	---	16	Vdc
Maximum Input Current	Please see Model List table on page 6				
No-Load Input Current	12V model		20		mA
	24V model		5		mA
Input Reflected Ripple Current	12V model		25		mA
	24V model		15		mA
Short Circuit Input Power	All models		1	3	W
Reverse Polarity Input Current				1	A
<b>OUTPUT CHARACTERISTICS</b>					
Output Voltage Set Point Accuracy			±0.5	±1.0	%
Output Voltage Balance	Dual output models		±0.5	±2.0	%
Output Voltage Regulation					
Over Load	I <sub>o</sub> =10% to 100%		±0.3	±1.0	%
Over Line	V <sub>in</sub> = min to max		±0.1	±0.3	%
Over Temperature	T <sub>c</sub> =-40°C to 100°C		±0.01	±0.02	%/C
Output Voltage Ripple and Noise	5Hz to 20MHz bandwidth				
Peak-to-Peak	Full Load, 0.47µF ceramic		50	75	mV
Peak-to-Peak, over line, load, temperature	Full Load, 0.47µF ceramic			100	mV
RMS	Full Load, 0.47µF ceramic			15	mV
Output Over Current/Power Protection	Auto restart	120			%
Output Short Circuit	Continuous				
Output Voltage Current Transient					
Step Change in Output Current	25% step change		±2	±6	%
Settling Time (within 1% V <sub>out</sub> nominal)			150	300	µS
Maximum Output Capacitance	Single output models			6800	µF
	Dual output models, each output			1000	µF
<b>EFFICIENCY</b>					
100% Load	Please see Model List table on page 6				
<b>ISOLATION CHARACTERISTICS</b>					
Isolation Voltage	Input to output, 60 Seconds	1500			Vdc
Isolation Voltage Test	Flash Test for 1 seconds	1650			Vdc
Isolation Resistance	500VDC	1000			MΩ
Isolation Capacitance	100KHz, 1V		380	500	pF
<b>FEATURE CHARACTERISTICS</b>					
Switching Frequency			300		kHz
<b>GENERAL SPECIFICATIONS</b>					
MTBF	MIL-HDBK-217F; T <sub>a</sub> =25°C, Ground Benign	1			M hours
Weight			16.9		grams
Case Material	Non-conductive black plastic				
Flammability	UL94V-0				
Input Fuse	12V model, 1500mA slow blown type				
	24V model, 700mA slow blown type				



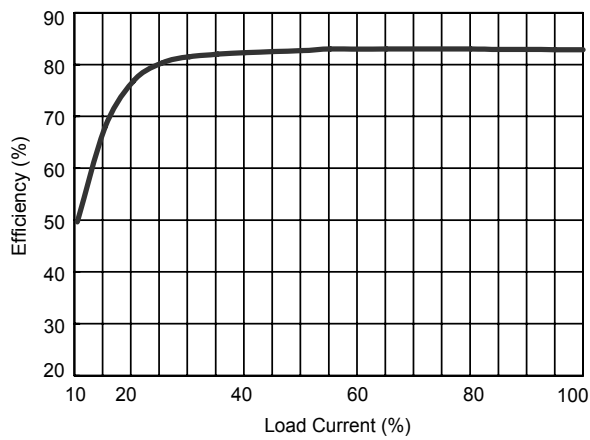
# ELECTRICAL CHARACTERISTICS CURVES



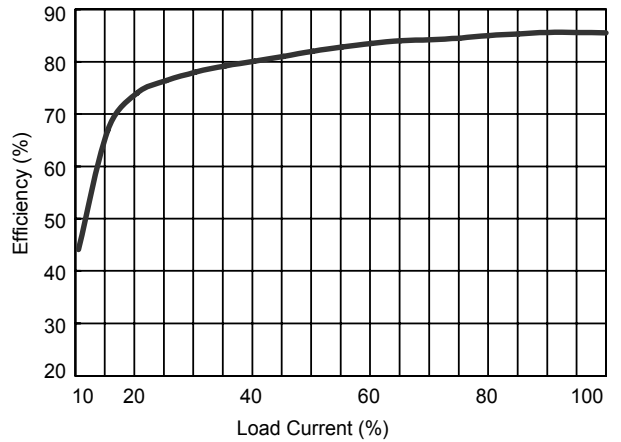
**Figure 1:** Efficiency vs. Input Voltage (Single Output)



**Figure 2:** Efficiency vs. Input Voltages (Dual Output)



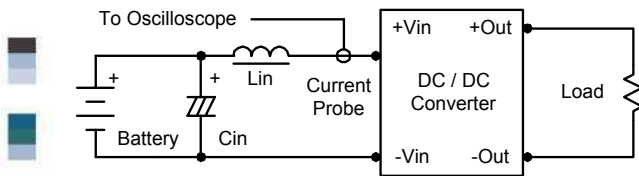
**Figure 3:** Efficiency vs. Output Load (Single Output)



**Figure 4:** Efficiency vs. Output Load (Dual Output)



## Test Configurations

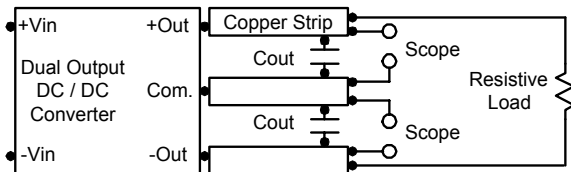
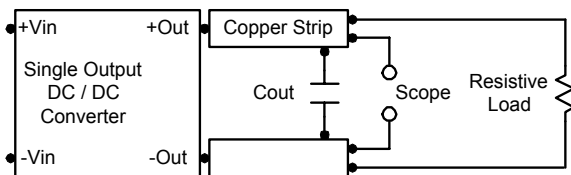


### Input Reflected-Ripple Current Test Setup

Input reflected-ripple current is measured with an inductor  $L_{in}$  (4.7uH) and  $C_{in}$  (220uF, ESR < 1.0Ω at 100 KHz) to simulate source impedance. Capacitor  $C_{in}$  is to offset possible battery impedance. Current ripple is measured at the input terminals of the module and measurement bandwidth is 0-500 KHz.

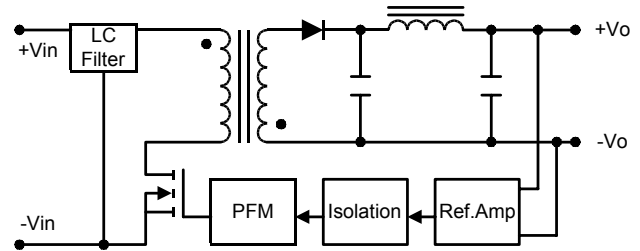
### Peak-to-Peak Output Noise Measurement

Scope measurement should be made by using a BNC socket, measurement bandwidth is 0-20 MHz. Position the load between 50 mm and 75 mm from the DC/DC Converter. A  $C_{out}$  of 0.47uF ceramic capacitor is placed between the terminals shown below.

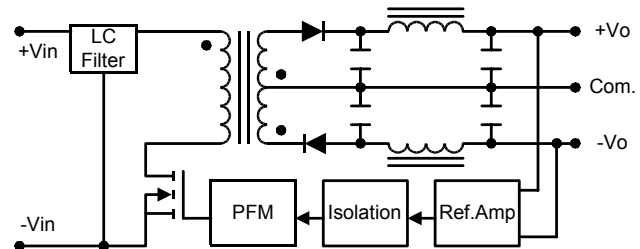


## Design & Feature Considerations

The DIW3100 circuit block diagrams are shown in Figures 5 and 6.



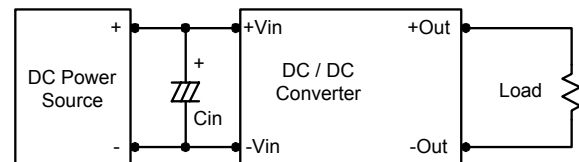
**Figure 5:** Block diagram of DIW3100 single output modules.



**Figure 6:** Block diagram of DIW3100 dual output modules

### Input Source Impedance

The power module should be connected to a low ac-impedance input source. Highly inductive source impedances can affect the stability of the power module.



In applications where power is supplied over long lines and output loading is high, it may be necessary to use a capacitor at the input to ensure startup.

Capacitor mounted close to the input of the power module helps ensure stability of the unit, it is recommended to use a good quality low Equivalent Series Resistance (ESR < 1.0Ω at 100 KHz) capacitor of a 3.3uF for the 12V input devices, and a 2.2uF for the 24V devices.

## Design & Feature Considerations

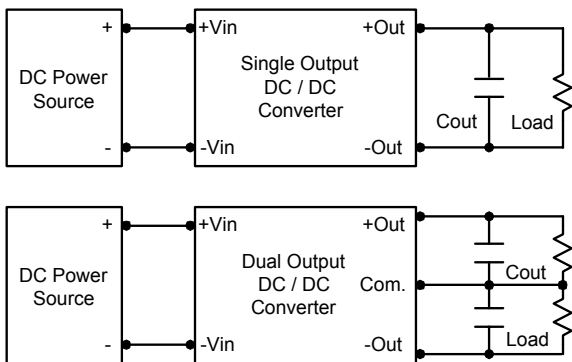
### Maximum Capacitive Load

The DIW3000 series has limitation of maximum connected capacitance at the output. The power module may be operated in current limiting mode during start-up, affecting the ramp-up and the startup time. For optimum performance we recommend 1000uF maximum capacitive load for dual outputs and 6800uF capacitive load for single outputs.

### Output Ripple Reduction

A good quality low ESR capacitor placed as close as practicable across the load will give the best ripple and noise performance.

To reduce output ripple, it is recommended to use 3.3uF capacitors at the output.



### Overcurrent Protection

To provide protection in a fault (output overload) condition, the unit is equipped with internal current limiting circuitry and can endure current limiting for an unlimited duration. At the point of current-limit inception, the unit shifts from voltage control to current control. The unit operates normally once the output current is brought back into its specified range.

### Soldering and Cleaning Considerations

Post solder cleaning is usually the final board assembly process before the board or system undergoes electrical testing. Inadequate cleaning and/or drying may lower the reliability of a power module and severely affect the finished circuit board assembly test. Adequate cleaning and/or drying is especially important for un-encapsulated and/or open frame type power modules. For assistance on appropriate soldering and cleaning procedures, please contact Delta's technical support team.

#### Notes:

1. These power converters require a minimum output load to maintain specified regulation (please see page 6 for the suggested minimum load). Operation under no-load conditions will not damage these modules; however, they may not meet all specifications listed above.
2. These DC/DC converters should be externally fused at the front end for protection.



## THERMAL CONSIDERATIONS

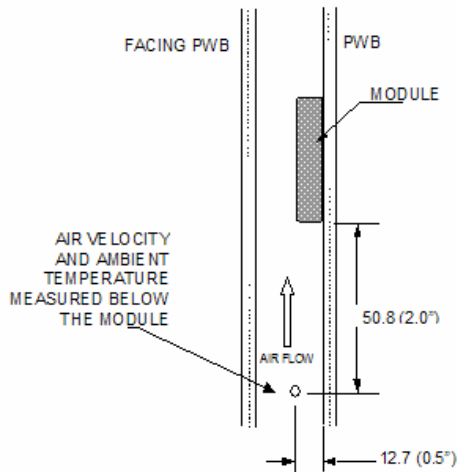
Thermal management is an important part of the system design. To ensure proper, reliable operation, sufficient cooling of the power module is needed over the entire temperature range of the module. Convection cooling is usually the dominant mode of heat transfer.

Hence, the choice of equipment to characterize the thermal performance of the power module is a wind tunnel.

### Thermal Testing Setup

Delta's DC/DC power modules are characterized in heated vertical wind tunnels that simulate the thermal environments encountered in most electronics equipment. This type of equipment commonly uses vertically mounted circuit cards in cabinet racks in which the power modules are mounted.

The following figure shows the wind tunnel characterization setup. The power module is mounted on a test PWB and is vertically positioned within the wind tunnel. The space between the facing PWB and PWB is constantly kept at 25.4mm (1").



Note: Wind Tunnel Test Setup Figure Dimensions are in millimeters and (Inches)

Figure 7: Wind tunnel test setup

### Thermal Derating

Heat can be removed by increasing airflow over the module. To enhance system reliability, the power module should always be operated below the maximum operating temperature. If the temperature exceeds the maximum module temperature, reliability of the unit may be affected.

## THERMAL CURVES

DIW3100series Output Current vs. Ambient Temperature and Air Velocity  
(Either Orientation)

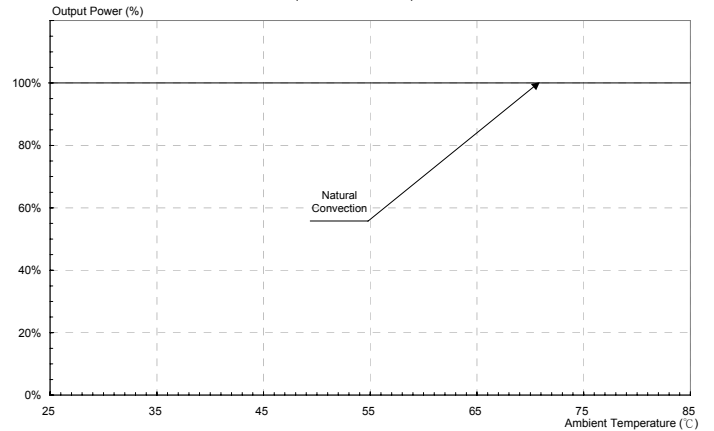


Figure 8: Derating Curve

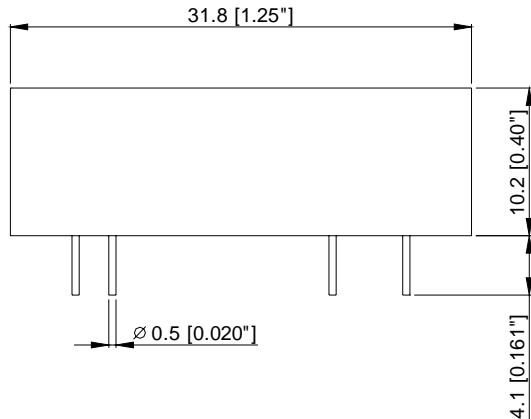


## MODEL LIST

	INPUT		OUTPUT			Full Load Efficiency
	Vdc (V)	Max (mA)	Vdc (V)	Max (mA)	Min (mA)	%
DIW3121	12 (9 ~ 18)	429	3.3	1200	60	77
DIW3122		514	5	1000	50	81
DIW3123		595	12	500	25	84
DIW3126		595	±12	±250	±12.5	84
DIW3127		595	±15	±200	±10	84
DIW3131	24 (18 ~ 36)	209	3.3	1200	60	79
DIW3132		251	5	1000	50	83
DIW3133		291	12	500	25	86
DIW3136		291	±12	±250	±12.5	86
DIW3137		291	±15	±200	±10	86

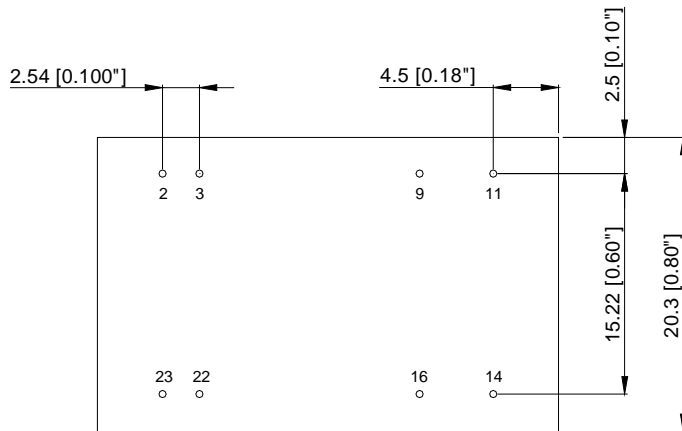


## MECHANICAL DRAWING



SIDE VIEW

Pin	Single Output	Dual Output
2	-Vin	-Vin
3	-Vin	-Vin
9	No Pin	Common
11	NC	-Vout
14	+Vout	+Vout
16	-Vout	Common
22	+Vin	+Vin
23	+Vin	+Vin



BOTTOM VIEW

NOTES:  
 DIMENSIONS ARE IN MILLIMETERS AND (INCHES)  
 TOLERANCES: X.Xmm±0.5mm(X.XX in.±0.02 in.)  
 X.XXmm±0.25mm(X.XXX in.±0.010 in.)

**CONTACT:** [www.delta.com.tw/dcdc](http://www.delta.com.tw/dcdc)

**USA:**

Telephone:  
 East Coast: (888) 335 8201  
 West Coast: (888) 335 8208  
 Fax: (978) 656 3964  
 Email: [DCDC@delta-corp.com](mailto:DCDC@delta-corp.com)

**Europe:**

Phone: +41 31 998 53 11  
 Fax: +41 31 998 53 53  
 Email: [DCDC@delta-es.com](mailto:DCDC@delta-es.com)

**Asia & the rest of world:**

Telephone: +886 3 4526107 ext 6220~6224  
 Fax: +886 3 4513485  
 Email: [DCDC@delta.com.tw](mailto:DCDC@delta.com.tw)

**WARRANTY**

Delta offers a two (2) year limited warranty. Complete warranty information is listed on our web site or is available upon request from Delta. Information furnished by Delta is believed to be accurate and reliable. However, no responsibility is assumed by Delta for its use, nor for any infringements of patents or other rights of third parties, which may result from its use. No license is granted by implication or otherwise under any patent or patent rights of Delta. Delta reserves the right to revise these specifications at any time, without notice.