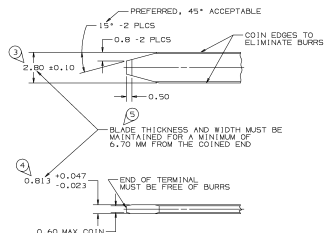


THIS DRAWING IS THE PROPERTY OF PACKARD ELECTRIC COMPANY. IT IS TO BE KEPT IN CONFIDENTIALITY AND NOT TO BE REPRODUCED OR DISCLOSED TO ANY OTHER PARTY WITHOUT THE WRITTEN PERMISSION OF PACKARD ELECTRIC COMPANY.

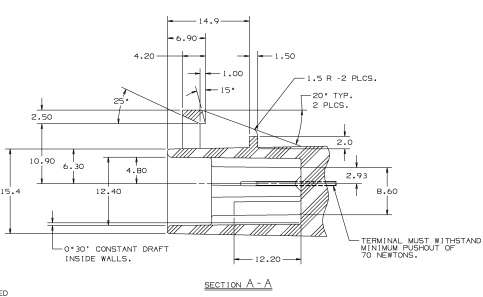
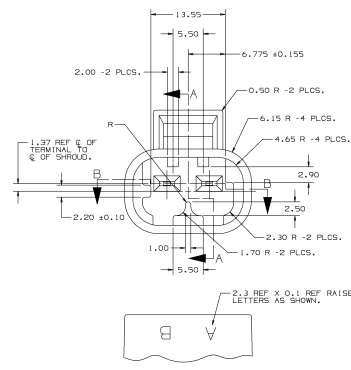
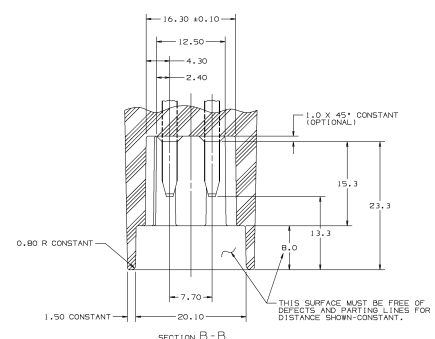
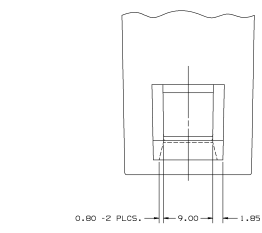
DATE	BY	REVISION NUMBER	APPROVED BY
11/14/82	C	REWORK & REDESIGNED CONNECTOR	14887 J.C.
		CHANGED SHIELD PIN SIZE	15008 J.C.
		PLUGGED REVISED CONNECTOR ASM	15176 J.A.



**MATERIAL SPECIFICATIONS**

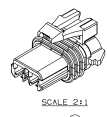
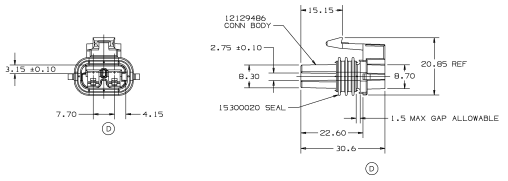
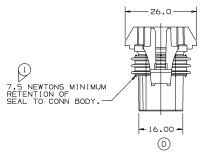
**RECOMMENDATION**  
 BASE METAL - CDA-210, 01LDNG, EXTRA SPRING TEMPER  
 PLATING - 0.0050±0.0025 MM THICK TIN  
**MINIMUMS**  
 ELECTRICAL CONDUCTIVITY - ≥ 20% IACS AT 20°C. USE OF A MATERIAL WITH CONDUCTIVITY < 20% IACS MUST BE APPROVED BY PACKARD ELECTRIC MATERIALS ENGINEERING.  
 TENSILE STRENGTH - 407 MPa  
 PLATING - FOR LOW ENERGY (450V) AND NON-PASSENGER COMPARTMENT POWER CIRCUITS, 0.0050±0.0025 MM THICK TIN FOR MATERIALS CONTAINING 10% OR MORE ZINC. AN UNDERPLATE OF COPPER 0.0050±0.0025 MM THICK IS REQUIRED.

**MATING BLADE INFORMATION**  
 SCALE 2:1



- NOTES**— 1. ALL RADII 0.40, UNLESS OTHERWISE SPECIFIED.  
 2. DIMENSIONS ARE TO FACE OF VIEW SHOWN, UNLESS OTHERWISE INDICATED.  
 3. RECOMMENDED MATERIAL - GLASS FILLED POLYESTER OR NYLON 66.  
 4. 1° DRAFT ON EXTERIOR SURFACES, UNLESS OTHERWISE INDICATED.  
 5. USE TAXI 12084172 FOR IN-LINE CONNECTOR INFORMATION.

**MATING INSERT MOLDED/"PANEL" CONNECTOR INFORMATION**  
 SCALE 4:1



- NOTES**— 1. CAVITIES TO ACCEPT 12110847 TERMINAL OR EQUIVALENT.  
 2. CAVITIES TO ACCEPT 12015323 CABLE SEAL OR EQUIVALENT.  
 3. WHEN PARTS ARE SHIPPED, THEY MUST BE PACKED IN PLASTIC BAGS OR SHIPPING CONTAINERS MUST BE LINED WITH PLASTIC LINERS. BAGS OR LINERS MUST BE SEALED TO AVOID ENTRY OF FOREIGN MATTER.  
 4. THIS PART TO ACCEPT CPA LOCK 12052834 OR EQUIVALENT.  
 5. THIS PART TO ACCEPT TPA 12077904 OR EQUIVALENT.  
 6. ENVIRONMENTAL SEAL CLASS CODE 3.  
 7. "C" DENOTES DIMENSIONS AND CHARACTERISTICS THAT ARE IMPORTANT TO THE FUNCTION AND/OR PROCESSING OF THE PART. IT DOES NOT NECESSARILY INDICATE AN SPC DIMENSION. THIS DRAWING HAS 'B' DIMENSIONS.  
 8. MATING CONNECTOR - WINDOW LIFT MOTOR OR EQUIVALENT.

METRIC	
DATE	1212 9487
SCALE	ASG CONN 2P M/P 280 FL
FORM NUMBER	1212 9487
REV	A0