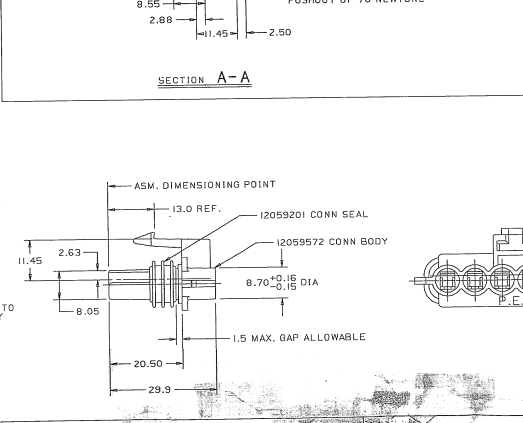
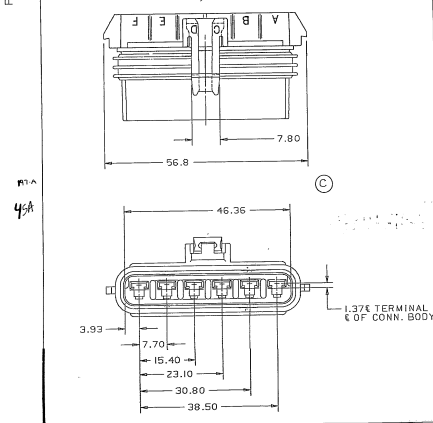


| DATE | BY | REVISION RECORD | AUTH | DR | CHK |
|--------|----|---|--------|----|-----|
| 00DE85 | A | CAVITY LETTERS & NOTES ADDED | | | |
| 020E85 | | RELEASED | 95005 | UP | FH |
| 150C85 | | 8.70 DIA. WAS 8.70 DIA. ON 12059572 CONNECTOR | | | |
| 155E87 | | ADDED NOTE #7 | 03562 | SM | FH |
| 17FE88 | B | ADHESIVE ADDED | 115423 | 10 | FH |
| 09JAB9 | B1 | 12077412 TERMINAL WAS 12034454 | | | |
| | | IN NOTE #1 | 830005 | 10 | BE |
| 31JL89 | B2 | REVISED LOCK ARM | 102104 | FH | SH |
| 8FE92 | C | REMOVED ADHESIVE NOTE | 57286 | 9 | GR |



NOTES - 1. CAVITIES TO ACCEPT 12077412 TERMINAL OR EQUIVALENT.
2. THIS ASSEMBLY TO ACCEPT 12059195 SECONDARY TERMINAL LOCK OR EQUIVALENT.
3. THIS ASSEMBLY TO ACCEPT C.P.A. LOCK 12052834.
4. THIS ASSEMBLY MATES TO DELCO PRODUCTS PART NO. 22062394 OR EQUIVALENT.
5. THIS ASSEMBLY TO ACCEPT CABLE SEAL 12015323 OR EQUIVALENT.
6. WHEN PARTS ARE SHIPPED, THEY MUST BE PACKED IN PLASTIC BAGS OR SHIPPING CONTAINERS MUST BE LINED WITH PLASTIC LINERS, BASS OR LINERS MUST BE SEALED TO AVOID ENTRY OF FOREIGN MATTER.
7. SEALING CODE 3.

04002916

| | | |
|--|---------------------|------------------------|
| METRIC | | THIRD ANGLE PROJECTION |
| DIMENSIONS ARE IN MILLIMETERS UNLESS OTHERWISE SPECIFIED | | |
| CODE NO. 6900 | ISSUANCE DATE | ANGULAR ± 1° |
| QC-C-5110 | DEC 1988 | THE PLACE IS 3.0 |
| APP. Q2AUBS | DR. C. J. PUGH | DATE 02DE85 |
| CD.A.12059573 | DR. J. HESTON | DATE 00DE85 |
| REFERENCE NO. 12040753 | APP. R. MADA | DATE 10DE85 |
| MATERIAL SPEC. | APP. T. DUMASIAN | DATE 00DE85 |
| SEE DRAWING | | |
| NAME | ASM CONN GF M/P 280 | SIZE |
| PART NO. | 1205 9573 | D |